



Title	Endurance assessment of Eichhornia crassipes (Mart.) Solms, in heavy metal contaminated site–A case study
Authors(s)	Thapa, Ganesh, Das, Debatosh, Gunupuru, Lokanadha R., Tang, Bozeng
Publication date	2016-08-25
Publication information	Thapa, Ganesh, Debatosh Das, Lokanadha R. Gunupuru, and Bozeng Tang. “Endurance Assessment of Eichhornia Crassipes (Mart.) Solms, in Heavy Metal Contaminated Site–A Case Study.” Edited by Peter Christiaan Speldewinde. Taylor & Francis, August 25, 2016. https://doi.org/10.1080/23311843.2016.1215280 .
Publisher	Taylor & Francis
Item record/more information	http://hdl.handle.net/10197/10080
Publisher's statement	This open access article is distributed under a Creative Commons Attribution (CC-BY) 4.0 license.
Publisher's version (DOI)	10.1080/23311843.2016.1215280

Downloaded 2026-05-02 01:17:15

The UCD community has made this article openly available. Please share how this access benefits you. Your story matters! (@ucd_oa)



© Some rights reserved. For more information



Location map of HPCL, Jagir Road dumping site

ENVIRONMENTAL HEALTH | RESEARCH ARTICLE

Endurance assessment of *Eichhornia crassipes* (Mart.) Solms, in heavy metal-contaminated site—A case study

Ganesh Thapa, Debatosh Das, Lokanadha Rao Gunupuru and Bozeng Tang

Cogent Environmental Science (2016), 2: 1215280



Received: 17 February 2016
Accepted: 18 July 2016
Published: 25 August 2016

*Corresponding author: Ganesh Thapa, Department of Biotechnology, Indian Institute of Technology Guwahati, Guwahati 781039, Assam, India; School of Biology and Environmental Science, Earth Institute, Science East, University College of Dublin 4, Belfield, Ireland
E-mails: g.thapa@alumni.iitg.ernet.in, gthaps@gmail.com

Reviewing editor:
Peter Christiaan Speldewinde, The University of Western Australia, Australia

Additional information is available at the end of the article

ENVIRONMENTAL HEALTH | RESEARCH ARTICLE

Endurance assessment of *Eichhornia crassipes* (Mart.) Solms, in heavy metal-contaminated site—A case study

Ganesh Thapa^{1,2*}, Debatosh Das³, Lokanadha Rao Gunupuru² and Bozeng Tang⁴

Abstract: In this study, the ability to hyper accumulate heavy metals from contaminated site by water hyacinth (*Eichhornia crassipes*) was monitored. The heavy metal-contaminated habitat was validated by X-ray diffraction and energy dispersive X-ray elemental spectrometry analysis of the soil samples. Heavy metal contamination in soil and water; accumulation in foliar, root and bulb tissue samples were determined by atomic absorption spectroscopy and were monitored as a function of accumulation in different tissues. Significant differences were recorded in the bioaccumulation capability of heavy metals by different tissue. Discrete variation in protein profile of leaves and high expression of alcohol dehydrogenase (ADH), peroxidase (POX) and altered regulation of esterase (EST) in root tissue was observed in contaminated site grown *Eichhornia*. The high metal accumulation efficiency of water hyacinth due to the biomass production suggests this species as reliable organic biomarker for heavy metal contamination.

Subjects: Bioscience; Earth Sciences; Environment & Agriculture; Environmental Studies & Management; Food Science & Technology

Keywords: AAS, atomic absorption spectrophotometry; ADH, alcohol dehydrogenase; CAT, catalases; CN, cyanide; EDX, energy dispersive X-ray elemental spectrometry; EST, esterase; HM, heavy metal; HPLC, Hindustan paper corporation limited

1. Introduction

Water hyacinth (*Eichhornia crassipes*), a perennial aquatic macrophyte, is considered to be noxious and extremely invasive for freshwater environments (Plants database, United States Department of Agriculture (USDA), 2004), but has a proven record of potential heavy metal hyperaccumulator (Alvarado et al., 2008; Delgado, Bigeriego, & Guardiola, 1993; Kay, Haller, & Garrard, 1984; Maine, Duarte, & Suñé, 2001; Prasad, Greger, & Landberg, 2001a; Prasad, Malec, Waloszek, Bojko, & Strzałka,



Ganesh Thapa

ABOUT THE AUTHOR

Ganesh Thapa is presently a postdoctoral scientist in Earth Institute, Science East, University College of Dublin 4, Belfield, Ireland. His research interests include abiotic stresses, heavy metal stresses, phytoremediation, TILLING, crops for the future, crop-biotic “stresses interaction and their control.

PUBLIC INTEREST STATEMENT

The study reveals that the unplanned disposal of paper mill wastes leads to irreversible contamination of agricultural land and water with heavy metals, which are toxic to human, animal and natural plant resources. This study also reaffirms the need to use planned disposable system and provide plants as bioaccumulators to use in bioremediation of waste land and water, which can be a beneficial approach for remediation of water and soil.

2001b; Suñe, Sánchez, Caffaratti, & Maine, 2007). Hence, *E. crassipes* always has been a popular candidate for rhizofiltration of metal-polluted aquatic environments with inherent ability of high biomass production, wide distribution and tolerance to cyanide (CN) and metals (Ghabbour, Davies, Lam, & Vozzella, 2004; Jayaweera & Kasturiarachchi, 2004; Singhal & Rai, 2003; Williams, 2002). This reckons the use of *Eichhornia* as model plant to study heavy metal-induced responses. Heavy metals basically are essential for normal plant growth and development, but their elevated concentrations may lead to toxicity symptoms and growth inhibition. Metal ions such as Mg, Cu, Zn, Mn, Ni and Fe are essential for plant growth processes that range from respiration to photosynthesis, but deleterious when exceed limit. Whereas, Cd, Al and Pb have no nutritional value, toxic and when present in excess in soil interferes with the uptake of essential ions, biosynthesis of chlorophyll and nucleic acids, lipid metabolism; thus profoundly affecting plant growth and development (Dykema et al., 1999; Ouairi, Boussama, Zarrouk, Cherif, & Habib Ghorbal, 1997). Therefore, plants have evolved a range of potential cellular mechanisms and proteins that may be involved in detoxification of heavy metals to achieve tolerance by regulating metal ion uptake and metal ion homeostasis (De Vos & Schat, 1991; Dietz, Krämer, & Baier, 1999).

Longer persistence in soil, absorption through plant roots and increased emission of heavy metals with a risk of entry into the food chain has led to great concern (Angelone & Bini, 1992; Galloway, Thornton, Norton, Volchok, & McLean, 1982; Lantzy & Mackenzie, 1979; Tomas, Cery, Lahucky, & Musilova, 2008; Verma, Madan, & Hussain, 2016; Vollmannova, Tomas, Bajcan, & Kovacak, 2008). So, the recovery of degraded soils and the reclamation of industrial sites have become imperative using stress-tolerant hyper accumulator plants. Hence, endeavours are on to improve plant stress tolerance and pollutants accumulating potential with the aim to be used for soil remediation (Salt et al., 1995). As such, a model system is a requisite now to understand the basic principles of toxicity mechanisms at the cellular and biochemical levels.

Plants subjected to heavy metal stress undergo biochemical changes producing ROS such as superoxide anion radical (O_2^-), hydrogen peroxide and hydrogen radicals ($\cdot OH$) (Cho & Park, 2001). The expression of antioxidation enzymes like, superoxide dismutase (SOD), aldehyde dehydrogenase (ADH), esterase (EST), peroxidase (POX) and catalases (CAT) have been found fundamental in scavenging ROS and providing sustenance to stressed plants (Gupta, Cuypers, Vangronsveld, & Clijsters, 1999). A significant induction of antioxidant enzymes (POX and CAT) along with an increase in the levels of protein, lipid peroxidation and GSH was noted in response to $CdCl_2$ in rice seedling (Yu, Wang, & He, 2000). Heavy metals may cause alteration either in the expression of stress proteins or enzyme activity. Although, *Eichhornia* as biosorbent of heavy metal ions has been reported (Sabale, Jadhav, Jadhav, Mohite, & Patil, 2010; Schneider, Rubio, Misra, & Smith, 1995) but there are few correlative studies with heavy metal contamination and morphological and biochemical level changes (Mishra & Tripathi, 2009; Paiva et al., 2009). In this article, an effort was made to assess the metal stress-induced morphological indicative changes in various tissues and protein and isozyme level of *Eichhornia* grown in heavy metal-contaminated area with focus to access the potential of *Eichhornia* as organic indicator and model system for heavy metal stress study.

2. Materials and methods

2.1. Sampling

The *Eichhornia* root and shoot samples were collected on site from the Hindustan Paper Corporation Limited (HPLC) Paper Mill dumping area situated beside National Highway No. 37, Morigaon, Assam, India (26°43.60' N and 92°14'29.38' E) and stored in liquid nitrogen. The soil samples were collected with the help of auger to depth ranging from 20 to 100 cm. A total of 18 soil samples with 3 replicates for each sample of varying depth and 3 replicates per sample were collected from site in randomized block experimental design. The water samples were also collected from contaminated site for preliminary analysis of heavy metals. The clod soil was first homogenized and then incubated in hot air oven at 80°C overnight, grounded and sieve analysed with cut-offs, 425, 300, 150 and 75 μm , respectively. The 75- μm sieve passed was used for further downstream analysis of heavy metal

composition. The sieve retained and passed soil samples were analysed for its physical characteristics and aggregation.

2.2. Mineralogical characterization

The metal composition of the soil sample was characterized using non-destructive AXS D8 ADVANCE fully automatic powder X-ray Diffractometer (XRD). The crushed and homogenized 75- μ m sieve passed soil sample was baked overnight in hot air oven at 80 C and analysed by the XRD device for the reflection angle (2θ) from 10 to 70 . To identify the crystalline phases, the results were compared with the Joint Committee on Powder Diffraction Standards. Furthermore, 75- μ m sieve passed flat surface soil sample was selected, cured overnight in hot air oven and treated with acetone-alcohol solution to stop hydration reactions (Asavapisit, Fowler, & Cheeseman, 1997) and coated with gold as conducting medium under 30-min vacuum time. The soil sample was then characterized using a scanning electron microscope (SEM, Leo 1430vp), equipped with energy dispersive X-ray elemental spectrometry (EDX).

2.3. AAS analysis

The root and shoot samples were repeatedly washed with bidistilled water, oven-dried at 65°C for 4 days and digested by USEPA Method (USEPA, 1997). The water samples were filtered prior to use and the 75- μ m sieve passed soil samples were extracted with 20 mL of 0.01 M ethylene diamine tetraacetic acid (EDTA) solution by repeated shaking for 15–20 min, centrifuged and the supernatant was decanted and filtered into fresh test tubes for analysis. The leachate pH was maintained to less than 2.0 by the addition of nitric acid to avoid metal precipitation before the metallic analysis. Metal concentration was determined by flame atomic absorption spectrometer using Air-Acetylene or Nitrous oxide-Acetylene Burner. Concentration of the metal ion standard solutions were adjusted to cover a range of 0 to 25 ppm and quality control metal standard reference were used.

2.4. Morphological imprinting

The growth of the *Eichhornia* plants in the industrial dumping site and control areas was monitored and compared in terms of shoot and root length, root hair proliferation, bulb girth and discolouration of the bulb and apical parts. Observation for evident heavy metal stress symptoms like leaf rolling, chlorosis and discolouration of bulb were also recorded. Triplicate readings for each parameter were taken and the average mean value was considered for comparisons between the morphological changes of stressed and control plants.

2.5. Protein and isozyme analysis

Protein was extracted from homogenized tissue sample in a buffer consisting of 30 mM Tris-HCl (pH 8.5), 1 mM ascorbic acid, 1 mM EDTA, 5 mM MgCl₂, 1 mM dithiothreitol (DTT) and 1 mM phenylmethylsulphonyl fluoride (PMSF) (Zivy, Thiellement, de Vienne, & Hofmann, 1983). Proteins in the supernatant were precipitated by adding 8 volumes of chilled acetone containing 10 mM of 2-mercaptoethanol at –20°C, centrifuged (15,000 rpm, 10 min, 4°C) and the precipitate was dissolved in Laemmli buffer (Laemmli, 1970). An aliquot of the supernatant was used for estimation of protein content by Bradford method (Bradford, 1976), 20 μ g of the protein electrophoresed at 50 mA constant current, stained and documented.

The samples were ground in prechilled pestle and mortar in 0.1 M Tris-HCl, pH 7.4 containing 10 mM DTT, 50 mM Tris-Cl buffer (pH 7.6) containing 5 mM β -ME and 5 mM EDTA in the ratio of 1:2 (w/v) and in 50 mM Tris-Cl buffer (pH 7.6) for alcohol dehydrogenase (ADH) assay, esterase (EST) and peroxidase (POX), respectively. The ground mixture was centrifuged at 15,000 rpm for 20 min at 4°C and the supernatant obtained was immediately electrophoresed in anionic polyacrylamide gel (Davis, 1964). The staining of the ADH was carried out in Tris-Cl buffer (50 mM, pH 8.0) containing 0.02% NAD⁺, 0.03% NBT, 0.004% PMS and 5% absolute alcohol (Dongre, 1988). Whereas, the staining of EST and POX isozyme were carried out by modified Brewer's method (Reddy & Garber, 1971) and in solution containing 2.08% Benzidine, 18% acetic acid, 3% H₂O₂ (Cotter-Howells, 1996),

respectively. After stopping the enzymatic reactions, the gels were fixed in 7% acetic acid solution and documented.

2.6. Statistical analysis

Data for the control and heavy metal-contaminated samples were pooled together and analysed statistically for the control of normality and equality of the variance assumption (Levene's test p -val $0.0029 < 0.05$) (Glantz & Slinker, 2001) and when necessary, the data were transformed to Log_{10} values of the metal accumulation in soil and water and Posthoc test: Bonferroni-Holm analysis (Holm, 1979). Whenever the parametric analysis failed, we opted for Kruskal-Wallis test with Dunn's post-test (Dunn, 1964) for nonparametric analysis to compare three or more unmatched groups using GraphPad Prism (version 5.03 for Windows; GraphPad Software, San Diego, CA, U.S.A.). For all statistical analyses, significance was set to $* = 0.01 \leq p \leq 0.05$, $** = 0.001 \leq p \leq 0.01$, and $*** / \Delta\Delta\Delta = p \leq 0.001$ throughout the experiments and accordingly plotted in the graphs for clear understanding.

3. Results and discussion

3.1. Mineralogical characterization

The *Eichhornia* plants were collected from HPLC industrial dumping site and monitored for morphological imprinting. It was followed by the confirmation of heavy metal contamination of site and plant sample. State of the *Eichhornia* plant's growth in the contaminated dumping site is well documented as scribed in the legend to Figure 1. The soil sample was primarily checked for pH and was found to be acidic around pH 4.8, which has been reported to be associated with areas of heavy metal contamination (Zhao, Xia, Fan, Zhao, & Shen, 2012). The low pH of the soil may have contributed to higher solubility of heavy metals (Chuan, Shu, & Liu, 1996). The soil physical structure and texture were analysed by passing through different sieves (Figure 2(A)) and microscopic analysis of the contaminated dumping site soils by SEM (Figure 2(B)). Solid matrix of heavy metal-contaminated soils is a very complex system and is still not well understood. The micrographs and sieving analysis of contaminated site soil showed the formation of aggregates, which generally occurs to entrap the metal adsorbed on the surface of two overlapping particles (Montinaro, Concas, Pisu, & Cao, 2012; Tica, Udovic, & Lestan, 2011).

The metal detection in the soil samples was confirmed by XRD analysis (Figure 3(A)). Data for control soil is not shown. A distinctive peak at 36.10 Å in the contaminated soil sample corresponds to Cd and Co presence in the tested soil. Various peaks at 48.7Å, 28.85Å, 23.05Å, 33.0Å suggested *in situ* formation of a ZrSiO_4 , CaF_2 , Cristoballite and Platternite-like mineral in the heavy metal-contaminated soil. The characteristic weak peak at 66.1Å and Zincite ascertained the presence of Hg-like mineral in the contaminated soil. This corroborates with previously reported studies where heavy metal-contaminated soil tends to form soil aggregate of Calcite (CaCO_3), β Quartz (SiO_2), χ Goethite $\text{FeO}(\text{OH})$, δ Hemimorphite $\text{Zn}_4\text{Si}_2\text{O}_7(\text{OH})_2(\text{H}_2\text{O})$ (Montinaro et al., 2012; Tica et al., 2011; Xu & Lu, 2012).

Figure 1. (A, B) Industrial waste dumping area; (C, D) *Eichhornia crassipes* sample collection site.



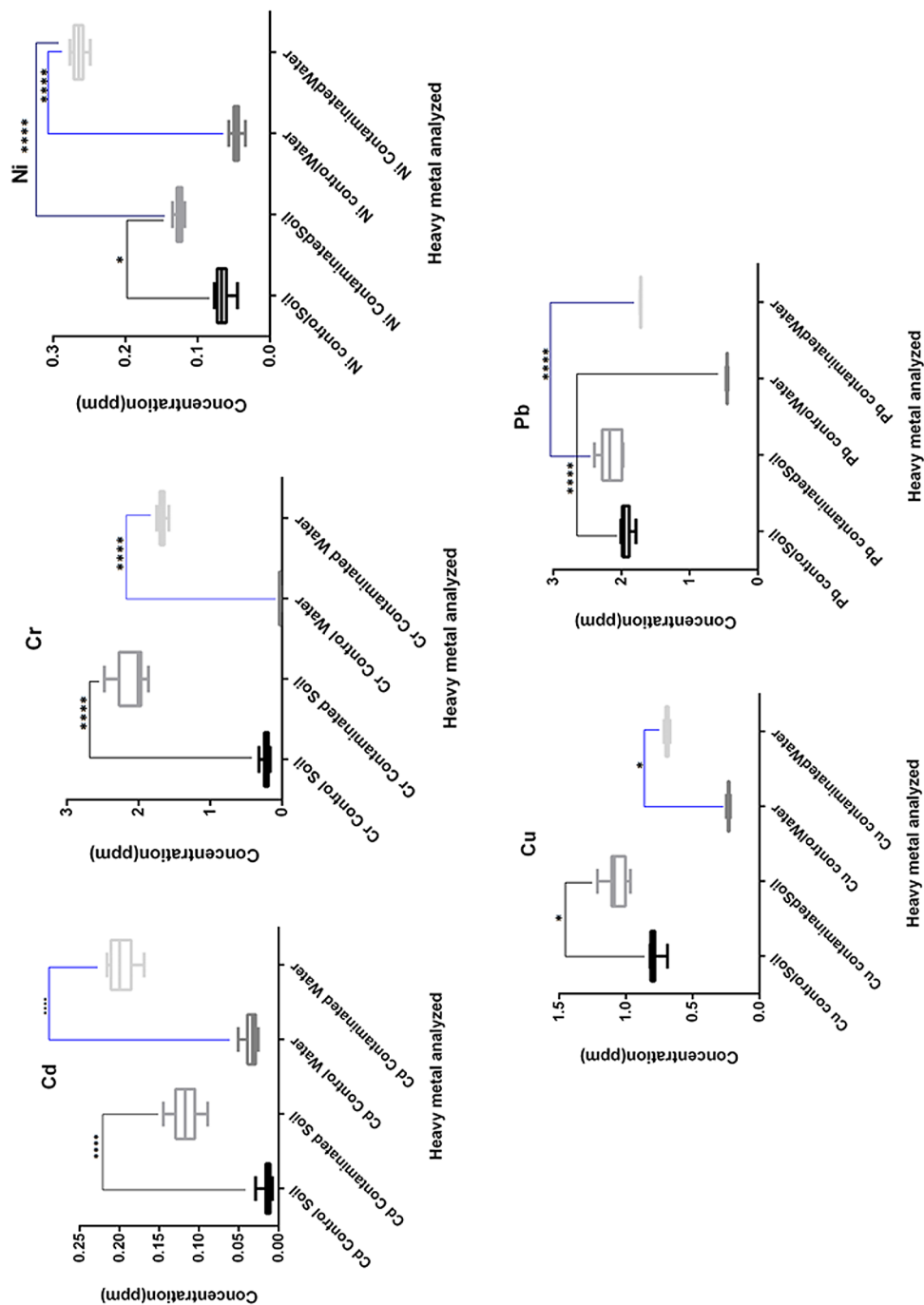


Figure 4. Analysis of heavy metals contamination in soil and water samples through AAS. For all statistical analyses, significance was set to $* = 0.01 \leq p \leq 0.05$, $** = 0.001 \leq p \leq 0.01$, and $***/\Delta\Delta\Delta = p \leq 0.001$ throughout the experiments and accordingly plotted in the graphs for clear understanding.

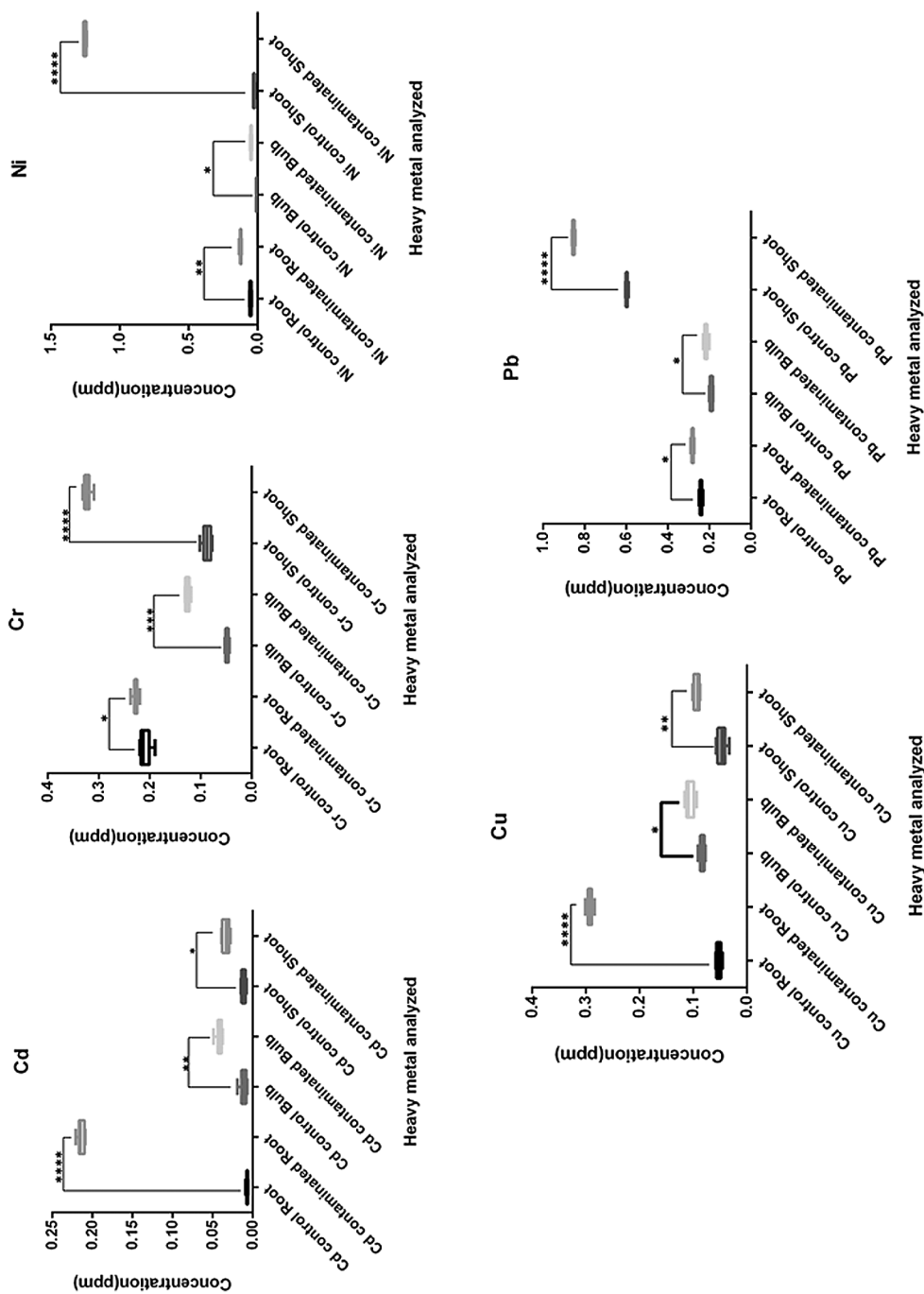


Figure 5. Analysis of soil and water samples through AAS for heavy metals accumulation. Error bars indicate 95% confidence intervals. For all statistical analyses, significance was set to * = 0.01 ≤ p ≤ 0.05, ** = 0.001 ≤ p ≤ 0.01, and ***/ΔΔΔ = p ≤ 0.001 throughout the experiments and accordingly plotted in the graphs for clear understanding.

root than control root ($p < 0.001$) as validated for *Eichhornia* being good accumulator of Cd (Muramoto & Oki, 1983). The higher concentration of Cu can be attributed to being as active constituent of plastocyanins, ascorbic acid oxidase, tyrosinase and phenol oxidase (Odjegba & Fasidi, 2007). The lowest Cr values were observed in both roots ($p < 0.05$) and bulb ($p < 0.05$) and highest accumulation of (0.323 mg/L) was found in shoot as reported earlier in *Eichhornia* (Lytle et al., 1996). The Ni, Pb, Cr concentration in control and contaminated shoot was significantly different with highest Ni accumulation in contaminated shoot ($p < 0.001$). Whereas, the Pb accumulation in control and contaminated root and bulb parts was more homogeneous with significant accumulation in the contaminated shoot ($p < 0.01$). All the metals were accumulated in substantially higher concentration in roots than in shoots with significantly higher accumulation of all heavy metals in contaminated bulb. As the plant parts' metal concentration ratio does not seem to change in an exposure-dependent way, there was significant accumulation of all the heavy metals in root and shoot under contaminated conditions ($p < 0.001$).

3.3. Morphological changes of *Eichhornia* in contaminated site

The growth of the *Eichhornia* plants in dumping site and control areas was monitored and the real-time changes in the various observable parameters have been recorded. The shoots of contaminated site *Eichhornia* showed evidence of chlorosis, leaf rolling and loss of chlorophyll, whereas underground root and bulb showed increment in length, girth and number as compared to control plants (Figure 6). Though *Eichhornia* has been reported to substantially accumulate Cu at 0.5 mg/L Cu^{2+} concentration without marked changes in its physiology, loss of chlorophyll and increase in protein level has been reported (Hu et al., 2007). The observed soil and water Cu concentration was 1.078 and 0.679 mg/L respectively towards extreme higher side of contamination level and hence, the appearance of heavy metal stress symptoms was obvious. The decline in chlorophyll content in plants exposed to heavy metal contamination such as Cu is believed to be due to enzymes inhibition associated with chlorophyll biosynthesis (John, Ahmad, Gadgil, & Sharma, 2009). The decrease in chlorophyll content was also reported in sunflower (Zengin & Munzuroglu, 2006) and in almond (Elloumi et al., 2007). These observed symptoms corroborate with Cd toxicity as leaf rolling, chlorosis and stomatal closure in plants (Clemens, 2006) and may be attributed to the negative effects of the heavy metals on mineral nutrition and homeostasis in plant shoot, root growth and development

Figure 6. Morphological changes of *Eichhornia* induced by heavy metals contamination. (A) contaminated plant; (B) Control plant; (C) Contaminated roots; (D) Shoot and root of contaminated and control plants; (E) Control roots; (F) Contaminated bulb; (G) Control bulb.

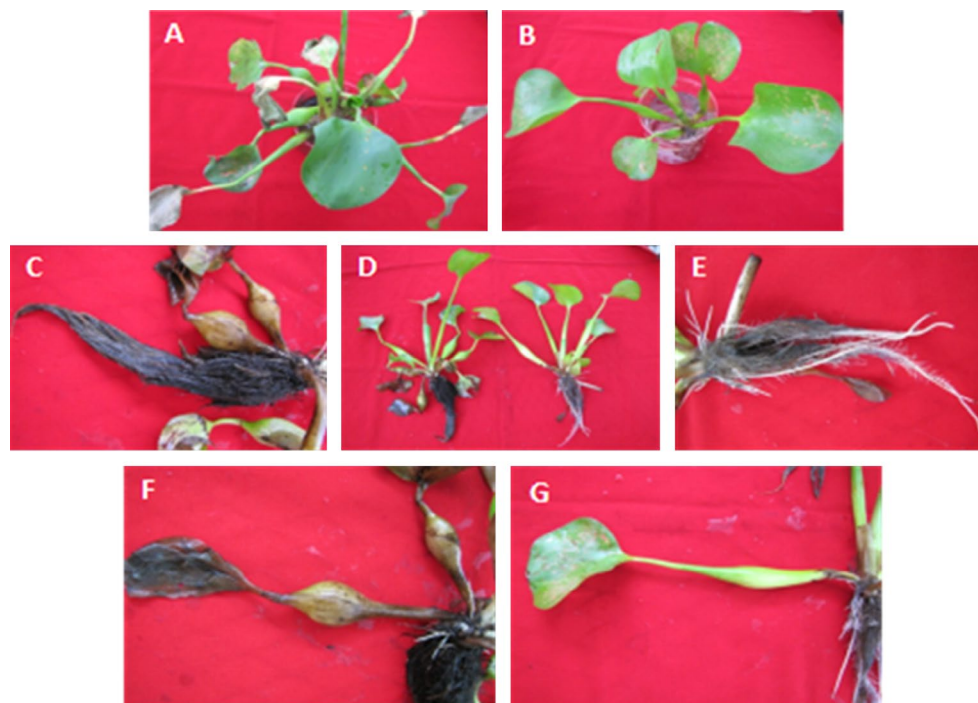
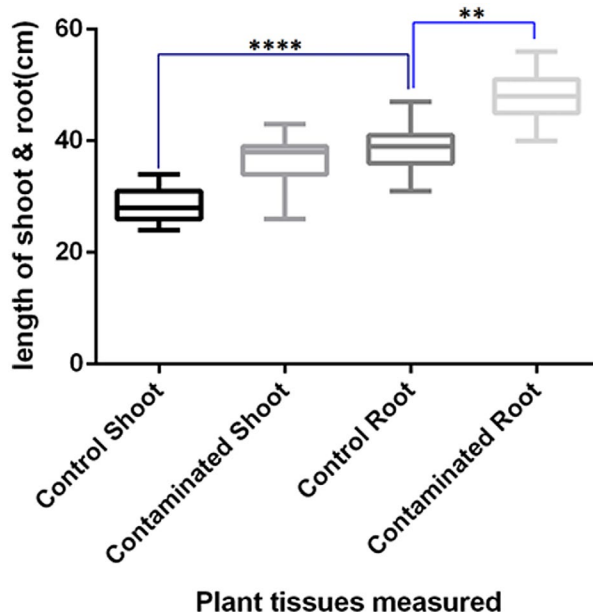


Figure 7. Effect of heavy metals contaminated industrial waste on growth of shoot and root of *Eichhornia* plants. For all statistical analyses, significance was set to * = $0.01 \leq p \leq 0.05$, ** = $0.001 \leq p \leq 0.01$, and */ $\Delta\Delta\Delta$ = $p \leq 0.001$ throughout the experiments and accordingly plotted in the graphs for clear understanding.**



(Farinati, DalCorso, Varotto, & Furini, 2010; Hassanein, Hashem, El-Deep, & Shouman, 2013; Metwally, Safronova, Belimov, & Dietz, 2005). Such differences in micromorphological characteristics of leaves and roots due to HM content have been reported recently in dandelion (Maleci, Buffa, Wahsha, & Bini, 2014). There has been report of Cd damaging photosynthetic apparatus and causing a decrease in chlorophyll content in contaminated plants (Sanità di Toppi & Gabbrielli, 1999). There seem to be clear symptoms of abscission in the root and leaves of contaminated *Eichhornia* plants. Such negative correlation of HM with root-shoot length, leaf area and biomass of plant has been also reported in *Albizia procera* (Pandey & Tripathi, 2011). It has been reported that exposure to heavy metals can induce increase in abscissic acid (ABA) and jasmonate level in plants (DalCorso, Farinati, Maistri, & Furini, 2008) and this enhanced ABA level may be responsible for the abscission and browning of contaminated root and leaves.

Eichhornia grown in contaminated site showed relative increased shoot and root growth as compared to the control (Figure 7). There was significant increased root growth in contaminated site than control site ($p < 0.001$) suggesting increased accumulation of metals. Though there has been report of increased shoot growth of *Eichhornia* with time and only became constant in the final harvest when grown with continuous water (Henry-Silva & Camargo, 2005; Martins, de Fátima Vitória de Moura, & Bezerra Loiola, 2011). Such increased growth might be the first line of acclimatization to sequester HMs to different cellular compartments of the plant. These observed changes in shoot, root length and bulb girth increment under contaminated condition may also be attributed to alterations in cell cycles and division and chromosomal aberrations due to Cd (Benavides, Gallego, & Tomaro, 2005). Furthermore, Cd has been reported to inactivate DNA mismatch repair in yeast and human cells (Jin et al., 2003) and the same mechanisms may be applicable in plants leading to abnormal growth. A chromatin-remodelling factor OXS3 isolated from *Brassica juncea* was found to protect DNA or alter its transcriptional selectivity under heavy metal stress (Blavillain, Kim, Wu, Lima, & Ow, 2008). This may be the first general mechanism of *Eichhornia* plants to accumulate the heavy metals and sequester it to various organelles to survive.

3.4. Protein profile changes in *Eichhornia*

When a plant is exposed to hostile condition, protein synthesis is one of the most negatively affected anabolic processes along with photosynthesis (loss of chlorophyll, ribulose-1,5-bisphosphate carboxylase oxygenase (RubisCO), transport of metabolites, and uptake and translocation of ions

Figure 8. Leaf protein profiles of *Eichhornia* grown in heavy metals contaminated and control habitat. (A) Lane: 1, 2, 3, 4 Proteins from different individual contaminated samples; Lane M: Molecular Weight Marker (MWM); (B) Lane: 1, 2, 3, 4 Proteins from different individual control samples; Lane M: Molecular Weight Marker.

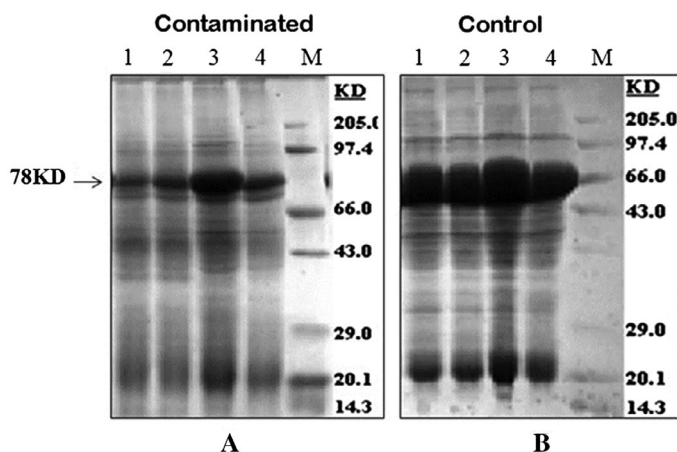
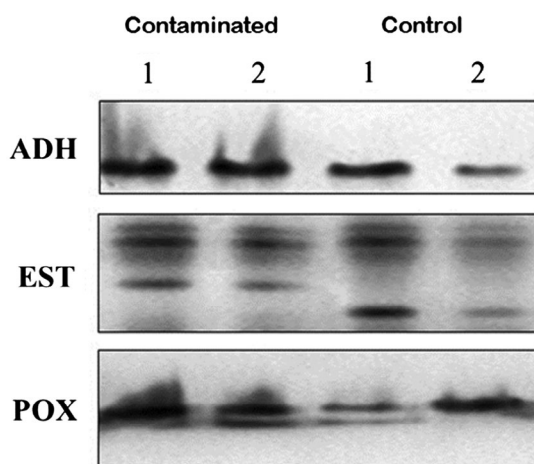


Figure 9. Activity staining of isozymes of Alcohol dehydrogenase (ADH), esterase (EST) and peroxidase (POX) on anionic PAGE.



(Bonjoch & Tamayo, 2001). Hence, the leaf protein profile of *Eichhornia* from contaminated site and control areas was analysed. Significant difference between the control and contaminated leaf protein profiles of *Eichhornia* (Figure 8) was found. The abundant band of 66KD believed to be RubisCO protein in control is missing in contaminated protein gel, where in fact, a low-intensity band of 78KD was observed. The reduction of photosynthetic protein in contaminated plants may be due to increase of ABA level which is believed to down regulate enzymes needed for photosynthesis (Chandler & Robertson, 1994). Similarly, the intense 20.1KD band seen in control protein profile was less intense in contaminated sample, suggesting significant variation in other protein bands also. The difference in protein profile may be due to the negative effect of the heavy metals such as Cd and Cu on the photosynthetic machinery, chlorophyll content and enzyme inhibition related to carbon assimilation (John et al., 2009; Perfus-Barbeoch, Leonhardt, Vavasseur, & Forestier, 2002; Sanità di Toppi & Gabbrielli, 1999). The decrease in protein band intensity observed in contaminated condition may be due to excess Cu that would have caused cellular damage at the DNA level and organelles such as mitochondria or lysosomes (Lee & Wei, 2001). It may suggest plant activating its stress-coping mechanisms like acclimation of metabolic fluxes, activation of repair processes and long-term metabolic and morphological adaptations, which conform to the named general adaptation syndrome (Lichtenthaler, 1996). Such mechanisms include *de novo* synthesis of proteins with specific adaptive functions, osmotic adjustment, antioxidative defence, among others. The altered protein profile in HM contamination may be due to synthesis of stress-responsive proteins or due to accumulation of free amino acids as histidine, proline and cysteine in tissues, this has been reported in stress metal such as Cd (Nedjimi & Daoud, 2009).

3.5. Isozymic profile in heavy metal stress

The activity and expression of genes encoding antioxidant enzymes during heavy metal-induced oxidative stress have provided variable and controversial results (Gomes-Junior et al., 2006). There has been report of high soil Cd concentration drastically altering antioxidant system such as SOD, CAT and POX in wheat seedlings (Lin et al., 2007). The growth of pea plants in 50 μM CdCl_2 has been affected to have reduction in SOD activity (Rodriguez-Serrano et al., 2009). Increasing levels of 0–500 μM Cd_2 alone and/or heat stress has showed increased activities of SOD, guaiacol POX, ascorbate POX and GSH reductase enzymes associated with induced oxidative stress and altered enzyme activities (Nahakpam & Shah, 2011). Plant ADH enzymes were considered to be dimers and the two subunits of ADH are encoded by two unlinked genes (Gottlieb, 1982; Sachs & Ho, 1986). In this study, appearance of comparative high-intensity ADH isozyme band during contaminated than control condition indicates the increase in ADH activity leading to increased enzyme synthesis (Figure 9). Increase in ADH enzyme activity has been shown by a change in isozymic profiles of the ADH protein in rice during abiotic stress (Rivoal, Ricard, & Pradet, 1989; Xie & Wu, 1989). The EST isozymes of contaminated and control conditions were found to be significantly different in terms of mobility, whereas POX isozymes were variable with respect to intensity. EST and POX patterns were found to be polymorphic and able to differentiate contaminated and control *Eichhornia* plants under study. Such differences of EST and POX have been previously reported to be a useful induction of abiotic stress tolerance in rice (Mandal, Mandal, Hazra, Mukherjee, & Das, 2004; Zhang, Zheng, Gao, & Cao, 1988).

These results showed a strategy of defence of *Eichhornia* against oxidative stress induced by heavy metal stress leading to variation in the expression of the antioxidant enzymes. Similar results are reported in plants stressed by Cu (Demirevska-Kepova, Simova-Stoilova, Stoyanova, Hölzer, & Feller, 2004), or other metals such as Mn, Pb, Ni and Cd (Demirevska-Kepova et al., 2004; Gomes-Junior et al., 2006; Kopyra & Gwóźdź, 2003; Sobkowiak, Rymer, Rucińska, & Deckert, 2004). Stress that disrupts the cellular homeostasis, including heavy metal toxicity, can enhance the production of ROS and increase the steady-state level of H_2O_2 up to 30-fold (Mittler, 2002). Although we have not measured H_2O_2 or other ROS in this study, alterations are likely to have occurred based on the responses of the antioxidant enzymes that were measured (Gratão, Monteiro, Antunes, Peres, & Azevedo, 2008). Hence, the significant differences of EST and POX isozymes observed during contaminated condition in *Eichhornia* may hint to induction of HM stress tolerance and survival.

4. Conclusions

The high level of Cd, Cu bioaccumulation in soil and roots respectively was revealed by AAS study. This may lead to future study of finding out the genetic mechanisms and regulations especially in roots. The shoot and root showed enhanced growth in *Eichhornia* growing in dumping site than control, which may indicate better acclimatization and sequestration of heavy metals. This may advocate the applicability of *Eichhornia* as agent for phytoremediation of contaminated site. Significant difference in the protein profile of the *Eichhornia* and altered expression of EST and POX suggests the increase in antioxidant enzymes' activities to limit the cellular damage to cope with heavy metal stress. The various morphological changes along with altered profile of protein and isozymes may be another strategy of *Eichhornia* to cope with the heavy metal stress by the synthesis of proteins with specific adaptive functions, which remain to be identified. The stress-adaptive potential of *Eichhornia* may be harnessed and it can be further tried as model system to study heavy metal stress tolerance in plants.

Supplementary material

The supplementary material for this paper is available online at <http://dx.doi.org/10.1080/23311843.2016.1215280>.

Acknowledgements

GT wish to acknowledge the financial support received through the Department of Biotechnology, Ministry of Science and Technology, Government of India during the study and does thanks IIT Guwahati for providing research facilities.

Funding

This research was financially supported by IIT Guwahati, [Grant no: BT082008].

Author details

Ganesh Thapa^{1,2}
E-mails: g.thapa@alumni.iitg.ernet.in, gthaps@gmail.com
Debatosh Das³
E-mail: devbt15@gmail.com
ORCID ID: <http://orcid.org/0000-0003-3729-5669>
Lokanadha Rao Gunupuru²
E-mail: lokmath.bio@gmail.com
ORCID ID: <http://orcid.org/0000-0002-1826-6646>
Bozeng Tang⁴
E-mail: bt284@exeter.ac.uk

- ¹ Department of Biotechnology, Indian Institute of Technology Guwahati, Guwahati 781039, Assam, India.
- ² School of Biology and Environmental Science, Earth Institute, Science East, University College of Dublin 4, Belfield, Ireland.
- ³ Plant Ecophysiology, Utrecht University, Utrecht, The Netherlands.
- ⁴ School of Biosciences, University of Exeter, Geoffrey Pope Building, Exeter EX4 4QD, UK.
- Citation information**
Cite this article as: Endurance assessment of *Eichhornia crassipes* (Mart.) Solms, in heavy metal-contaminated site—A case study, Ganesh Thapa, Debatosh Das, Lokanadha Rao Gunupuru & Bozeng Tang, *Cogent Environmental Science* (2016), 2: 1215280.
- Cover image**
Source: Author.
- References**
Adejumo, S. A., Togun, A. O., Adediran, J. A., & Ogundiran, M. B. (2011). *In-Situ* remediation of heavy metal contaminated soil using Mexican sunflower (*Tithonia diversifolia*) and cassava waste composts. *World Journal of Agricultural Research*, 7, 224–233.
- Alvarado, S., Guédez, M., Lué-Merú, M. P., Nelson, G., Alvaro, A., Jesús, A. C., ... Gyula, Z. (2008). Arsenic removal from waters by bioremediation with the aquatic plants water hyacinth (*Eichhornia crassipes*) and lesser duckweed (*Lemna minor*). *Bioresource Technology*, 99, 8436–8440. <http://dx.doi.org/10.1016/j.biortech.2008.02.051>
- Angelone, M., & Bini, C. (1992). Trace elements concentrations in soils and plants of Western Europe. In D. C. Adriano (Ed.), *Biogeochemistry of trace metals* (pp. 19–60). Boca Raton, FL: Lewis.
- Asavapisit, S., Fowler, G., & Cheeseman, C. R. (1997). Solution chemistry during cement hydration in the presence of metal hydroxide wastes. *Cement and Concrete Research*, 27, 1249–1260. [http://dx.doi.org/10.1016/S0008-8846\(97\)00109-9](http://dx.doi.org/10.1016/S0008-8846(97)00109-9)
- Benavides, M. P., Gallego, S. M., & Tomaro, M. (2005). Cadmium toxicity in plants. *Brazilian Journal of Plant Physiology*, 17, 21–34.
- Blanvillain, R., Kim, J. H., Wu, S., Lima, A., & Ow, D. W. (2008). Oxidative Stress3 is a chromatin associated factor involved in tolerance to heavy metals and oxidative stress. *The Plant Journal*, 57, 657–665.
- Bonjoch, N. P., & Tamayo, P. R. (2001). *Protein content quantification by Bradford method* (pp. 283–295). Netherlands: Kluwer Academic Publishers.
- Bradford, M. M. (1976). A rapid and sensitive method for the quantitation of microgram quantities of protein utilizing the principle of protein-dye binding. *Analytical Biochemistry*, 72, 248–254. [http://dx.doi.org/10.1016/0003-2697\(76\)90527-3](http://dx.doi.org/10.1016/0003-2697(76)90527-3)
- Chandler, P. M., & Robertson, M. (1994). Gene expression regulated by abscisic acid and its relation to stress tolerance. *Annual Review of Plant Physiology and Plant Molecular Biology*, 45, 113–141. <http://dx.doi.org/10.1146/annurev.pp.45.060194.000553>
- Cho, U. H., & Park, J. O. (2001). Mercury-induced oxidative stress in tomato seedlings. *Plant Science*, 156, 1–9.
- Chuan, M. C., Shu, G. Y., & Liu, J. C. (1996). Solubility of heavy metals in a contaminated soil: Effects of redox potential and pH. *Water, Air, and Soil Pollution*, 90, 543–556. <http://dx.doi.org/10.1007/BF00282668>
- Clemens, S. (2006). Evolution and function of phytochelatin synthases. *Journal of Plant Physiology*, 163, 319–332. <http://dx.doi.org/10.1016/j.jplph.2005.11.010>
- Cotter-Howells, J. (1996). Lead phosphate formation in soils. *Environmental Pollution*, 93, 9–16. [http://dx.doi.org/10.1016/0269-7491\(96\)00020-6](http://dx.doi.org/10.1016/0269-7491(96)00020-6)
- DalCorso, G., Farinati, S., Maistri, S., & Furini, A. (2008). How plants cope with cadmium: Staking all on metabolism and gene expression. *Journal of Integrative Plant Biology*, 50, 1268–1280. <http://dx.doi.org/10.1111/jipb.2008.50.issue-10>
- Davis, B. J. (1964). Disc electrophoresis II. Methods and application to human serum proteins. *Annals of the New York Academy of Sciences*, 121, 404–427.
- De Vos, C. H. R., & Schat, H. (1991). Free radicals and heavy metal tolerance. In H. Lieth & H. A. Mooney (Eds.), *Ecological responses to environmental stress* (pp. 22–31). Dordrecht: Kluwer. <http://dx.doi.org/10.1007/978-94-009-0599-3>
- Delgado, M., Bigeriego, M., & Guardiola, E. (1993). Uptake of Zn, Cr and Cd by water hyacinths. *Water Research*, 27, 269–272. [http://dx.doi.org/10.1016/0043-1354\(93\)90085-V](http://dx.doi.org/10.1016/0043-1354(93)90085-V)
- Demirevska-Kepova, K., Simova-Stoilova, L., Stoyanova, Z., Hölzer, R., & Feller, U. (2004). Biochemical changes in barley plants after excessive supply of copper and manganese. *Environmental and Experimental Botany*, 52, 253–266. <http://dx.doi.org/10.1016/j.enxvexbot.2004.02.004>
- Dietz, K. J., Krämer, U., & Baier, M. (1999). Free radicals and reactive oxygen species as mediators of heavy metal toxicity in plants. In M. N. V. Prasad & J. Hagemeyer (Eds.), *Heavy metal stress in plants: Molecules to ecosystem* (73–97). Berlin: Springer.
- Dongre, A. R. (1988). Emerging tandem mass spectroscopy techniques for rapid identification of proteins. *Trends in Biotechnology*, 15, 418–425.
- Dunn, O. J. (1964). Multiple Comparisons Using Rank Sums. *Technometrics*, 6, 241–252. <http://dx.doi.org/10.1080/00401706.1964.10490181>
- Dykema, P. E., Sipes, P. R., Marie, A., Biermann, B. J., Crowell, D. N., & Randall, S. K. (1999). A new class of proteins capable of binding transition metals. *Plant Molecular Biology*, 41, 139–150. <http://dx.doi.org/10.1023/A:1006367609556>
- Elloumi, N. Ben, F., Rhouma, A., Ben, B., Mezghani, I., & Boukhris, M. (2007). Cadmium induced growth inhibition and alteration of biochemical parameters in almond seedlings grown in solution culture. *Acta Physiologiae Plantarum*, 29, 57–62.
- Farinati, S., DalCorso, G., Varotto, S., & Furini, A. (2010). The *Brassica juncea* BjCdr15, an ortholog of Arabidopsis TGA3, is a regulator of cadmium uptake, transport and accumulation in shoots and confers cadmium tolerance in transgenic plants. *New Phytologist*, 185, 964–978. <http://dx.doi.org/10.1111/j.1469-8137.2009.03132.x>
- Galloway, J. N., Thornton, J. N., Norton, S. A., Volchok, H. L., & McLean, R. A. (1982). Trace metals in atmospheric deposition: A review and assessment. *Atmospheric Environment* (1967), 16, 1677–1700. [http://dx.doi.org/10.1016/0004-6981\(82\)90262-1](http://dx.doi.org/10.1016/0004-6981(82)90262-1)
- Ghabbour, E. A., Davies, G., Lam, Y. Y., & Vozzella, M. E. (2004). “Metal binding by humic acids isolated from water hyacinth plants (*Eichhornia crassipes*)” [Mart.] SolmsLaubach: Pontedericeae in the Nile Delta. *Egypt Journal of Environmental Pollution*, 131, 445–451.
- Glantz, S. A., & Slinker, B. K. (2001). *Primer of applied regression & analysis of variance* (2nd ed.). New York, NY: McGraw-Hill.
- Gomes-Junior, R. A., Moldes, C. A., Delite, F. S., Pompeu, G. B., Gratão, P. L., Mazzafera, P. ... Azevedo, R. A. (2006). Antioxidant metabolism of coffee cell suspension cultures in response to cadmium. *Chemosphere*, 65, 1330–1337. <http://dx.doi.org/10.1016/j.chemosphere.2006.04.056>
- Gottlieb, L. P. (1982). Conservation and duplication of isozymes in plants. *Science*, 216, 373–380. <http://dx.doi.org/10.1126/science.216.4544.373>

- Gratão, P. L., Monteiro, C. C., Antunes, A. M., Peres, L. E. P., & Azevedo, R. A. (2008). Acquired tolerance of tomato (*Lycopersicon esculentum* cv. *Micro-Tom*) plants to cadmium-induced stress. *Annals of Applied Biology*, 153, 321–333. <http://dx.doi.org/10.1111/aab.2008.153.issue-3>
- Gupta, M., Cuypers, A., Vangronsveld, J., & Clijsters, H. (1999). Copper affects the enzymes of the ascorbate-glutathione cycle and its related metabolites in the roots of *Phaseolus vulgaris*. *Physiologia Plantarum*, 106, 262–267. <http://dx.doi.org/10.1034/j.1399-3054.1999.106302.x>
- Hassanein, R. A., Hashem, H. A., El-Deep, M. H., & Shouman, A. (2013). Soil contamination with heavy metals and its effect on growth, yield and physiological responses of vegetable crop plants (Turnip and Lettuce). *Journal of Stress Physiology & Biochemistry*, 9, 145–162.
- Henry-Silva, G. G., & Camargo, A. F. M. (2005). Interacões ecológicas entre as macrofitas aquáticas flutuantes *Eichhornia crassipes* and *Pistia stratiotes* [Ecological interaction between the floating macrophytes]. *Hoenea*, 32, 445–452.
- Holm, S. (1979). A simple sequentially rejective multiple test procedure. *Scandinavian Journal of Statistics*, 6(2), 65–70.
- Hu, C., Zhang, L., Hamilton, D., Zhou, W., Yang, T., & Zhu, D. (2007). Physiological responses induced by copper bioaccumulation in *Eichhornia crassipes* (Mart). *Hydrobiologia*, 579, 211–218. <http://dx.doi.org/10.1007/s10750-006-0404-9>
- Jayaweera, M. W., & Kasturiarachchi, J. C. (2004). Removal of nitrogen and phosphorus from industrial wastewaters by phytoremediation using water hyacinth (*Eichhornia crassipes* (Mart.) Solms). *Water Science and Technology*, 50, 217–225.
- Jin, Y. H., Clark, A. B., Slebos, R. J., Al-Refai, H., Taylor, J. A., Kunkel, T. A. ... Resnick, M. A. (2003). Cadmium is a mutagen that acts by inhibiting mismatch repair. *Nature Genetics*, 34, 326–329. <http://dx.doi.org/10.1038/ng1172>
- John, R., Ahmad, P., Gadjil, K., & Sharma, S. (2009). Heavy metal toxicity: Effect on plant growth, biochemical parameters and metal accumulation by *Brassica juncea* L. *International Journal of Plant Production*, 3, 65–76.
- Kay, S. H., Haller, W. T., & Garrard, L. A. (1984). Effects of heavy metals on water hyacinths (*Eichhornia crassipes* (Mart.) Solms). *Aquatic Toxicology*, 5, 117–128. [http://dx.doi.org/10.1016/0166-445X\(84\)90003-1](http://dx.doi.org/10.1016/0166-445X(84)90003-1)
- Kopyra, M., & Gwózdź, E. A. (2003). Nitric oxide stimulates seed germination and counteracts the inhibitory effect of heavy metals and salinity on root growth of *Lupinus luteus*. *Plant Physiology and Biochemistry*, 41, 1011–1017. <http://dx.doi.org/10.1016/j.plaphy.2003.09.003>
- Laemmli, U. K. (1970). Cleavage of structural proteins during the assembly of the head of bacteriophage T4. *Nature*, 227, 680–685. <http://dx.doi.org/10.1038/227680a0>
- Lantzy, R. J., & Mackenzie, F. T. (1979). Atmospheric trace metals: Global cycles and assessment of man's impact. *Geochimica et Cosmochimica Acta*, 43, 511. [http://dx.doi.org/10.1016/0016-7037\(79\)90162-5](http://dx.doi.org/10.1016/0016-7037(79)90162-5)
- Lee, H. C., & Wei, Y. H. (2001). Mitochondrial alterations, cellular response to oxidative stress and defective degradation of proteins in aging. *Biogerontology*, 2, 231–244. <http://dx.doi.org/10.1023/A:1013270512172>
- Lichtenthaler, H. K. (1996). Vegetation stress: An introduction to the stress concept in plants. *Journal of Plant Physiology*, 148, 4–14. [http://dx.doi.org/10.1016/S0176-1617\(96\)80287-2](http://dx.doi.org/10.1016/S0176-1617(96)80287-2)
- Lin, R., Wang, X., Luo, Y., Du, W., Guo, H., & Yin, D. (2007). Effects of soil cadmium on growth, oxidative stress and antioxidant system in wheat seedlings (*Triticum aestivum* L.). *Chemosphere*, 69, 89–98. <http://dx.doi.org/10.1016/j.chemosphere.2007.04.041>
- Lytle, C. M., Lytle, F. W., Yang, N., Qian, J. H., Hansen, D., & Zayed, A. (1996). Reduction of Cr(VI) to Cr(III) by wetland plants: Potential for *in situ* heavy metal detoxification. *Environmental Science & Technology*, 32, 3087–3093.
- Maine, M. A., Duarte, M. V., & Suñé, N. L. (2001). Cadmium uptake by floating macrophytes. *Water Research*, 35, 2629–2634. [http://dx.doi.org/10.1016/S0043-1354\(00\)00557-1](http://dx.doi.org/10.1016/S0043-1354(00)00557-1)
- Maleci, L., Buffa, G., Wahsha, M., & Bini, C. (2014). Morphological changes induced by heavy metals in dandelion (*Taraxacum officinale* Web) growing on mine soils. *Journal of Soils and Sediments*, 14, 731–743. <http://dx.doi.org/10.1007/s11368-013-0823-y>
- Mandal, S., Mandal, N., Hazra, K., Mukherjee, S. K., & Das, P. K. (2004). Submergence tolerant androgenic rice dihaploids derived from intra- and interspecific crosses: I. Seed storage protein and isozyme pattern through gel electrophoresis. *Plant tissue culture*, 14, 25–35.
- Martins, D. F., de Fátima Vitória de Moura, M. F., & Bezerra Loiola, M. I. (2011). Temporal and physiological influence of the absorption of nutrients and toxic elements by *Eichhornia crassipes*. *Journal of Environmental Monitoring*, 13, 274–279. <http://dx.doi.org/10.1039/C0EM00323A>
- Metwally, A., Safronova, V. I., Belimov, A. A., & Dietz, K. J. (2005). Genotypic variation of the response to cadmium toxicity in *Pisum sativum* L. *Journal of Experimental Botany*, 56, 167–178.
- Mishra, V. K., & Tripathi, B. D. (2009). Accumulation of chromium and zinc from aqueous solutions using water hyacinth (*Eichhornia crassipes*). *Journal of Hazardous Materials*, 164, 1059–1063. <http://dx.doi.org/10.1016/j.jhazmat.2008.09.020>
- Mittler, R. (2002). Oxidative stress, antioxidants and stress tolerance. *The Plant Science*, 7, 405–410.
- Montinaro, S., Concas, A., Pisu, M., & Cao, G. (2012). Remediation of heavy metals contaminated soils by ball milling. *Chemical Engineering Transactions*, 28, 187–192.
- Muramoto, S., & Oki, Y. (1983). Removal of some heavy metals from polluted water-by-water hyacinth (*Eichhornia crassipes*). *Bulletin of Environmental Contamination and Toxicology*, 30, 170–177. <http://dx.doi.org/10.1007/BF01610117>
- Nahakpam, S., & Shah, K. (2011). Expression of key antioxidant enzymes under combined effect of heat and cadmium toxicity in growing rice seedlings. *Plant Growth Regulation*, 63, 23–35. <http://dx.doi.org/10.1007/s10725-010-9508-3>
- Nedjimi, B., & Daoud, Y. (2009). Cadmium accumulation in *Atriplex halimus* subsp. *schweinfurthii* and its influence on growth, proline, root hydraulic conductivity and nutrient uptake. *Flora-Morphology, Distribution, Functional Ecology of Plants*, 204, 316–324. <http://dx.doi.org/10.1016/j.flora.2008.03.004>
- Odjegba, V. J., & Fasidi, I. O. (2007). Phytoremediation of heavy metals by *Eichhornia crassipes*. *The Environmentalist*, 27, 349–355. <http://dx.doi.org/10.1007/s10669-007-9047-2>
- Ogundiran, M. B. (2007). *Assessment and Chemical remediation of soil contaminated by lead acid battery wastes in Lalupon village Oyo State, Nigeria* (Ph.D Thesis). University of Ibadan.
- Ouariti, O., Boussama, N., Zarrouk, M., Cherif, A., & Habib Ghorbal, M. H. (1997). Cadmium- and copper-induced changes in tomato membrane lipids. *Phytochemistry*, 45, 1343–1350. [http://dx.doi.org/10.1016/S0031-9422\(97\)00159-3](http://dx.doi.org/10.1016/S0031-9422(97)00159-3)
- Paiva, L. B., de Oliveira, J., Azevedo, R. A., Ribeiro, D. R., da Silva, M. G., Vitória, A. P. ... Vitória, A. P. (2009). Ecophysiological responses of water hyacinth exposed to Cr³⁺ and Cr⁶⁺. *Environmental and Experimental Botany*, 65, 403–409. <http://dx.doi.org/10.1016/j.enxepbot.2008.11.012>
- Pandey, P., & Tripathi, A. K. (2011). Effect of heavy metals on morphological and biochemical characteristics of *Albizia procera* (Roxb.) Benth. Seedlings. *International Journal of Environmental Science*, 1, 1009–1018.
- Perfus-Barbeoch, L., Leonhardt, N., Vavasseur, A., & Forestier, C. (2002). Heavy metal toxicity: Cadmium permeates through calcium channels and disturbs the plant water status. *The Plant Journal*, 32, 539–548. <http://dx.doi.org/10.1046/j.1365-313X.2002.01442.x>

- Plants database, United States Department of Agriculture (USDA). (2004).
- Prasad, M. N. V., Greger, M., & Landberg, T. (2001a). *Acacia nilotica* L. bark removes toxic elements from solution: corroboration from toxicity bioassay using *Salix viminalis* L. in hydroponic system. *International Journal of Phytoremediation*, 3, 289–300.
<http://dx.doi.org/10.1080/15226510108500060>
- Prasad, M. N. V., Malec, P., Waloszek, A., Bojko, M., & Strzałka, K. (2001b). Physiological responses of *Lemna trisulca* L. (duckweed) to cadmium and copper bioaccumulation. *Plant Science*, 161, 881–889.
[http://dx.doi.org/10.1016/S0168-9452\(01\)00478-2](http://dx.doi.org/10.1016/S0168-9452(01)00478-2)
- Reddy, M. M., & Garber, E. O. (1971). Genetic studies of variant enzymes. III. comparative electrophoretic studies of esterases and peroxidases for species, hybrids, and amphiploids in the genus *Nicotiana*. *Botanical Gazette*, 132, 158–166. <http://dx.doi.org/10.1086/336574>
- Rivoal, J., Ricard, B., & Pradet, A. (1989). Glycolytic and fermentative enzyme induction during anaerobiosis in rice seedlings. *Plant Physiology and Biochemistry*, 27, 43–52.
- Rodriguez-Serrano, M., Romero-Puertas, M. C., Pazmino, D. M., Testillano, P. S., Risueno, M. C., del Rio, L. A., & Sandalio, L. M. (2009). Cellular response of pea plants to cadmium toxicity: Cross talk between reactive oxygen species, nitric oxide, and calcium. *Plant Physiology*, 150, 229–243.
<http://dx.doi.org/10.1104/pp.108.131524>
- Sabale, S., Jadhav, V., Jadhav, D., Mohite, B. S., & Patil, K. J. (2010). Lake contamination by accumulation of heavy metal ions in *Eichhornia crassipes*: A case study of Rankala Lake, Kolhapur (India). *Journal of Environmental Science and Engineering*, 52, 155–156.
- Sachs, M. M., & Ho, T. H. D. (1986). Alteration of gene expression during environmental stress in plants. *Annual Review of Plant Physiology*, 37, 363–376.
<http://dx.doi.org/10.1146/annurev.pp.37.060186.002051>
- Salt, D. E., Blaylock, M., Kumar, N. P., Dushenkov, Viatcheslav, Ensley, B. D., Chet, I. ..., Raskin, I. (1995). Phytoremediation: A novel strategy for the removal of toxic metals from the environment using plants. *Biotechnology*, 13, 468–474.
<http://dx.doi.org/10.1038/nbt0595-468>
- Sanità di Toppi, L., & Gabbriellini, R. (1999). Response to cadmium in higher plants. *Environmental and Experimental Botany*, 41, 105–130.
[http://dx.doi.org/10.1016/S0098-8472\(98\)00058-6](http://dx.doi.org/10.1016/S0098-8472(98)00058-6)
- Schneider, I. A. H., Rubio, J., Misra, M., & Smith, R. W. (1995). *Eichhornia crassipes* as biosorbent for heavy metal ions. *Minerals Engineering*, 8, 979–988.
[http://dx.doi.org/10.1016/0892-6875\(95\)00061-T](http://dx.doi.org/10.1016/0892-6875(95)00061-T)
- Singhal, V., & Rai, J. P. N. (2003). Biogas production from water hyacinth and channel grass used for phytoremediation of industrial effluents. *Bioresource Technology*, 86, 221–225.
- Sobkowiak, R., Rymer, K., Rucińska, R., & Deckert, J. (2004). Cadmium-induced changes in antioxidant enzymes in suspension culture of soybean cells. *Acta biochimica polonica*, 51, 219–222.
- Suñe, N., Sánchez, G., Caffaratti, S., & Maine, M. A. (2007). Cadmium and chromium removal kinetics from solution by two aquatic macrophytes. *Environmental Pollution*, 145, 467–473.
- Tica, D., Udovic, M., & Lestan, D. (2011). Immobilization of potentially toxic metals using different soil amendments. *Chemosphere*, 85, 577–583.
<http://dx.doi.org/10.1016/j.chemosphere.2011.06.085>
- Tomas, J., Cery, J., Lahucky, L., & Musilova, J. (2008). Contamination of soil and alimentary wheat in Zemplin polluted area. *Chemicke listy*, 102, 489–490.
- USEPA. (1997). Innovative uses of compost Bioremediation and pollution prevention. *USEPA report*, 1–6.
- Verma, C., Madan, S., & Hussain, A. (2016). Heavy metal contamination of groundwater due to fly ash disposal of coal-fired thermal power plant, Parichha, Jhansi, India. *Cogent Engineering*, 3, 1179243.
<http://dx.doi.org/10.1080/23311916.2016.1179243>
- Vollmannova, A., Tomas, J., Bajcan, D., & Kovacak, P. (2008). Soil hygiene in old environmental burden areas. *Chemicke listy*, 102, 519–520.
- Williams, J. B. (2002). Phytoremediation in wetland ecosystems: progress, problems and potential. *Critical Reviews in Plant Sciences*, 21, 607–635.
- Xie, Y., & Wu, R. (1989). Rice alcohol dehydrogenase genes: anaerobic induction, organ specific expression and characterization of cDNA clones. *Plant Molecular Biology*, 13, 53–68. <http://dx.doi.org/10.1007/BF00027335>
- Xu, M., & Lu, N. (2012). Research on removing heavy metals from mine tailings. *Disaster Advances*, 5, 116–120.
- Yu, G. Y., Wang, G. P., & He, G. G. (2000). Comparison of physiological responses to oxidative and heavy metal stress in seedlings of rice paddy, *Oryza sativa* L. *Journal of Environmental Sciences*, 12, 458–462.
- Zengin, F. K., & Munzuroglu, O. (2006). Toxic effects of cadmium (Cd²⁺) on metabolism of sunflower (*Helianthus annuus* L.) seedlings. *Acta Agriculturae Scandinavica Section B-Soil and Plant Science*, 56, 224–229.
- Zhang, Z. H., Zheng, Z. L., Gao, H. Y., & Cao, H. X. (1988). Breeding, evaluation and utilization of anther cultured varieties “Zin Xion” and “Hua Han Zoo” in rice (*Oryza sativa* L.). In IRRI and Academia Sinica (Eds.), *Genetic manipulations in crops* (pp. 36–37). Cassel Tycooly.
- Zhao, H., Xia, B., Fan, C., Zhao, P., & Shen, S. (2012). Human health risk from soil heavy metal contamination under different land uses near Dabaoshan Mine, Southern China. *Science of The Total Environment*, 417, 45–54.
<http://dx.doi.org/10.1016/j.scitotenv.2011.12.047>
- Zivy, M., Thiellement, H., de Vienne, D., & Hofmann, J. P. (1983). Study on nuclear and cytoplasmic genome expression in wheat by two-dimensional gel electrophoresis. *Theoretical and Applied Genetics*, 66(1), 1–7.
<http://dx.doi.org/10.1007/BF00281838>



© 2016 The Author(s). This open access article is distributed under a Creative Commons Attribution (CC-BY) 4.0 license.

You are free to:

Share — copy and redistribute the material in any medium or format

Adapt — remix, transform, and build upon the material for any purpose, even commercially.

The licensor cannot revoke these freedoms as long as you follow the license terms.

Under the following terms:

Attribution — You must give appropriate credit, provide a link to the license, and indicate if changes were made.

You may do so in any reasonable manner, but not in any way that suggests the licensor endorses you or your use.

No additional restrictions

You may not apply legal terms or technological measures that legally restrict others from doing anything the license permits.

