



<b>Title</b>	Cardioprotective Peptides from Milk Processing and Dairy Products: From Bioactivity to Final Products Including Commercialization and Legislation
<b>Authors(s)</b>	Mirzapour-Kouhdasht, Armin, García-Vaquero, Marco
<b>Publication date</b>	2022-04-27
<b>Publication information</b>	Mirzapour-Kouhdasht, Armin, and Marco García-Vaquero. "Cardioprotective Peptides from Milk Processing and Dairy Products: From Bioactivity to Final Products Including Commercialization and Legislation." MDPI, April 27, 2022. <a href="https://doi.org/10.3390/foods11091270">https://doi.org/10.3390/foods11091270</a> .
<b>Publisher</b>	MDPI
<b>Item record/more information</b>	<a href="http://hdl.handle.net/10197/12967">http://hdl.handle.net/10197/12967</a>
<b>Publisher's version (DOI)</b>	<a href="https://doi.org/10.3390/foods11091270">10.3390/foods11091270</a>

Downloaded 2026-05-02 00:30:18

The UCD community has made this article openly available. Please share how this access benefits you. Your story matters! (@ucd\_oa)



© Some rights reserved. For more information

Review

# Cardioprotective Peptides from Milk Processing and Dairy Products: From Bioactivity to Final Products Including Commercialization and Legislation

Armin Mirzapour-Kouhdasht and Marco Garcia-Vaquero \*

School of Agriculture and Food Science, University College Dublin, Belfield, Dublin 4, D04 V1W8 Dublin, Ireland; armin.mirzapourkouhdasht@ucd.ie

\* Correspondence: marco.garciavaquero@ucd.ie

**Abstract:** Recent research has revealed the potential of peptides derived from dairy products preventing cardiovascular disorders, one of the main causes of death worldwide. This review provides an overview of the main cardioprotective effects (assayed *in vitro*, *in vivo*, and *ex vivo*) of bioactive peptides derived from different dairy processing methods (fermentation and enzymatic hydrolysis) and dairy products (yogurt, cheese, and kefir), as well as the beneficial or detrimental effects of the process of gastrointestinal digestion following oral consumption on the biological activities of dairy-derived peptides. The main literature available on the structure–function relationship of dairy bioactive peptides, such as molecular docking and quantitative structure–activity relationships, and their allergenicity and toxicity will also be covered together with the main legislative frameworks governing the commercialization of these compounds. The current products and companies currently commercializing their products as a source of bioactive peptides will also be summarized, emphasizing the main challenges and opportunities for the industrial exploitation of dairy bioactive peptides in the market of functional food and nutraceuticals.

**Citation:** Mirzapour-Kouhdasht, A.; Garcia-Vaquero, M.

Cardioprotective Peptides from Milk Processing and Dairy Products: From Bioactivity to Final Products Including Commercialization and Legislation. *Foods* **2022**, *11*, 1270. <https://doi.org/10.3390/foods11091270>

Academic Editor: Moshe Rosenberg

Received: 30 March 2022

Accepted: 25 April 2022

Published: 27 April 2022

**Publisher's Note:** MDPI stays neutral with regard to jurisdictional claims in published maps and institutional affiliations.



**Copyright:** © 2022 by the authors. Licensee MDPI, Basel, Switzerland. This article is an open access article distributed under the terms and conditions of the Creative Commons Attribution (CC BY) license (<https://creativecommons.org/licenses/by/4.0/>).

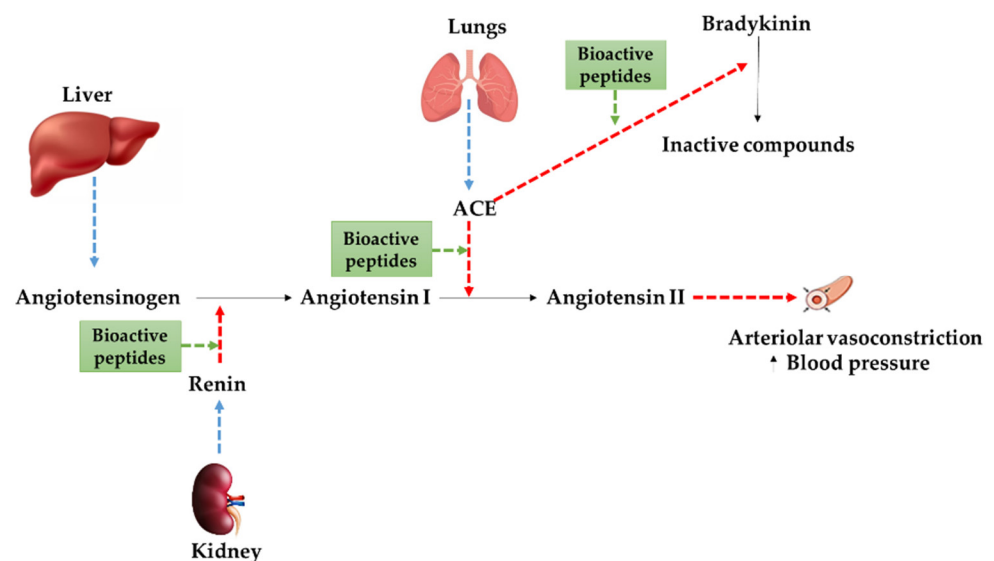
**Keywords:** bioactive peptides; cardioprotective peptides; dairy processing; dairy products

## 1. Introduction

Bioactive peptides can be described as short chains of amino acids (2–20 residues) with strong health-promoting properties [1–3]. Generally, processed milk (hydrolysis or fermentation) and dairy products (cheese, yogurt, and kefir) can be considered as excellent sources of bioactive peptides. These peptides are inactive within the intact structure of dairy proteins and they gain strong biological activities once they are released by different hydrolysis methods [4], such as the *in vitro* fermentation of milk with a proteolytic starter during dairy processing or also *in vivo* after ingesting proteins during the process of gastrointestinal (GI) digestion [5,6]. Thus, the production of bioactive peptides can be considered as an expanded business for the dairy industry as co-products such as whey protein, with an annual production of approximately 180–190 million tons [7], can be excellent sources for the generation of bioactive peptides.

Bioactive peptides have shown very strong health-promoting properties, being capable of lowering the risks of many diseases, such as cardiovascular disorders (CVD) [1–3]. CVD is a global term to encompass multiple disorders including heart failure, atherosclerosis, cerebrovascular disease, peripheral vascular disease, and other cardiac anomalies [8], and it is considered as the most common cause of death in the general population globally every year [9]. Lowering high blood pressure or hypertension is a prominent target to prevent CVD. There are two different mechanisms for lowering blood pressure: following the renin–angiotensin system (RAS), the enzyme renin catalyzes the conversion of angiotensinogen to angiotensin I. Following a cascade reaction, the angiotensin-

converting enzyme (ACE) subsequently converts angiotensin I to angiotensin II which is a vasoconstrictor agent that will ultimately generate an increased high blood pressure. In addition, ACE has a role in the kinin–nitric oxide system (KNOS) converting the vasodilator agent bradykinin into inactive components [10]. The inhibition of both renin and ACE by bioactive compounds, including bioactive peptides, could be used as a promising targeted strategy to control CVD. Thus, dairy products and derived bioactive peptides can be an excellent candidate in the prevention of these disorders as a source of bioactive peptides [11–13] with multiple targets to exert these cardioprotective activities as summarized in Figure 1.



**Figure 1.** Potential mechanisms for the cardioprotective effects of bioactive peptides derived from dairy.

To date, several reviews on milk products and bioactive peptides have focused specifically on methods to produce and analyse bioactive peptides [14–16] or on the multiple health benefits related to the consumption of these peptides [15,17] without deeper explanation on the mechanism of action of the compounds or the effect of gastrointestinal digestion on their biological properties when these compounds are administered as food. The current work aims to review the state of the art and main bioactive peptides with anti-hypertensive activities *in vitro*, *in vivo*, and *ex vivo* discovered from milk processing (enzymatic and microbial hydrolysis) and dairy products (milk, yogurt, cheese, and kefir) as well as the effects of GI digestion on their structure. Moreover, the structure–function relationship of these bioactive peptides, as well as studies evaluating their allergenicity and toxicity, will also be reported. The products currently in the market as a source of bioactive peptides and the legislative frameworks available worldwide that regulate the commercialization of these compounds will also be summarised aiming to establish a clear scenario for the future use and exploitation of these peptides by the dairy industry.

## 2. Bioactive Peptides Derived from Milk

Bioactive peptides from milk are normally sequences of 2–50 amino acids [18] generated by *in vivo* and/or *in vitro* digestion processes, displaying cardioprotective effects upon their release from casein [4]. These peptides may contribute to lower the risk of CVD through several pathways as previously described in Figure 1. These routes for CVD prevention include: (i) inhibiting the renin secreted from the kidney; (ii) inhibiting the conversion of angiotensin I into angiotensin II; and (iii) inhibiting the conversion of bradykinin to inactive components (non-vasodilator agents) [10,19].

Milk production worldwide has continued to grow over the last decade: 497 million metric tons of cow milk were produced in 2015, rising to levels of up to 544 million metric tons by 2021 [20]. The main proteinaceous constituents of milk that could be used for the generation of cardioprotective peptides include caseins ( $\alpha$ S1-casein,  $\alpha$ S2-casein,  $\beta$ -casein, and k-casein),  $\alpha$ -lactalbumin ( $\alpha$ -LA),  $\beta$ -lactoglobulin ( $\beta$ -LG), immunoglobulins, lactoferrin, protease–peptide fractions, serum albumin, and transferrin [21]. These proteins could be used for either *in vivo* or *in vitro* digestion to generate bioactive peptides and then purify them by different separation techniques to assess their cardioprotective effects.

Different factors affect the cardioprotective effects of bioactive peptides from milk, including the protein source, peptide sequence, and proteolytic activity. The hydrolysis process of milk by proteolytic enzymes is currently the preferred approach to obtain cardioprotective bioactive peptides from dairy proteins. The advantages of this method include high reproducibility, target specificity and controllable conditions during the hydrolysis [22], resulting in a cost-efficient process really suitable for the generation of these compounds at industrial level. There are several studies researching the cardioprotective effects of bioactive peptides derived from dairy proteins following a hydrolysis process [23–27]. The hydrolysis conditions can affect the bioactive peptides' production efficiency as well as their cardioprotective activity. Four major factors of the enzymatic hydrolysis process have been introduced to control the cardioprotective effects of generated bioactive peptides derived from dairy products including hydrolysis temperature, time, pH, and enzyme to substrate ratio. In a research performed by Guo et al. [28], the optimum hydrolysis conditions for ACE inhibitory of whey protein concentrate hydrolysates (obtained by crude proteinases from *Lactobacillus helveticus* LB13) were determined by response surface methodology (RSM). The results of this study indicated that the optimum conditions for achieving ACE inhibitory activity of 92.2% were an enzyme to substrate ratio of 0.60, 8 h, pH of 9.18, and 38.9 °C of temperature. The degree of hydrolysis is a factor that is positively related to the cardioprotective activity of the bioactive peptides [29]. This degree of hydrolysis is normally increased by increasing the processing time, temperature, and pH until certain levels specific for each protein in which no further degree of hydrolysis is appreciated due to the denaturation of the hydrolytic enzymes under unfavorable conditions [30]. The enzyme to substrate ratio is not linearly related to the degree of hydrolysis and cardioprotective effects of the peptides [31]. This effect could be due to an enzymatic steric effect that does not allow contact between the protein and the catalytic sites in the enzymes, and the reduction of substrate diffusion and saturation reaction rates [30]. In a study performed by Mazorra-Manzano et al. [32], whey protein was hydrolyzed to generate ACE inhibitory peptides using plant proteases. Whey protein hydrolysates (especially those from  $\beta$ -lactoglobulin) revealed the highest ACE inhibitory of 75–90%. However, the authors did not determine the amino acid sequences of the bioactive peptides from these hydrolysates responsible for that effect.

The peptide sequences discovered from different milk proteins using proteolytic enzymes, as well as the cardioprotective activities reported in the scientific literature, are summarized in Table 1. Lin et al. [33] used qula casein from yak milk and hydrolyzed it using different enzymes (alcalase,  $\alpha$ -chymotrypsin, thermolysin, proteinase K, trypsin, and papain). The authors identified 3 bioactive peptides with ACE inhibitory activity *in vitro*, PFPGPIP, KYIPIQ, and LPLPLL, with  $IC_{50}$  of 12.79, 7.28, and 10.46  $\mu$ M, respectively [33]. Lin et al. [34], indicated that qula casein hydrolysed by two approaches (combination of thermolysin + alcalase and thermolysin + proteinase K) could be a source of ACE inhibitory peptides. The identified bioactive peptides (KFPQY, MPFPKYP, MFPPQ, and QWQVL) were chemically synthesized, among which the highest ACE inhibitory activity, with  $IC_{50}$  of 12.37  $\mu$ M, of the peptide KFPQY.

**Table 1.** Cardioprotective peptides derived from milk using enzymatic proteolytic procedures.

Original Proteins	Proteolytic Procedures	Peptide Sequences	Cardioprotective Mechanisms	References
Bovine casein	Peptidase from <i>Maclura pomifera</i> latex	YQEPVLGPVVRGPFPIIV and RFFVAPFPE	ACE inhibitory	[35]
Goat milk	Simulated gastrointestinal digestion	AEK, AI, IPP, AY, and VP	ACE inhibitory	[36]
Buffalo skimmed milk	Papain, pepsin, or trypsin	FPGPIPK, IPPK, IVPN, and QPPQ	ACE inhibitory	[37]
Camel milk casein	Pepsin, trypsin, and chymotrypsin	Not identified	ACE inhibitory	[38]
Camel milk	Simulated gastrointestinal digestion	IPP	ACE inhibitory	[39]
Defatted milk powder	Continuous enzyme membrane reactor (EMR)	Not identified	ACE inhibitory	[24]
Camel milk whey hydrolysates	Pepsin	PVAAAPVM and LRPFL	Renin inhibitory and ACE inhibitory	[40]
Caprine milk	Neutral protease and pepsin	Not identified	ACE inhibitory	[41]
Yak milk casein	Screened using quantitative structure-activity relationship (QSAR) models	KYIPIQ	Production of nitric oxide by ACE inhibition	[42]
Milk protein concentrate	Alcalase, protamex, flavourzyme, proteAXH, and protease A2SD	QEPVLGPVVRGPF and YPFPGPIP	ACE inhibitory	[43]

The generation of bioactive peptides from the fermentation process could be a prominent approach to obtain peptides with potential cardioprotective effects. These bioactive peptides could be released from milk fermentation using different generally recognized as safe (GRAS) microorganisms, such as lactic acid bacteria (LAB). Milk proteins are a good nitrogen source for proteolytic enzymes from starters, generally LAB, generating cardioprotective peptides during dairy processing [44–46]. A comprehensive list of cardioprotective bioactive peptides derived from the milk fermentation process using different microbial cultures is listed in Table 2.

Li et al. [47] investigated the influences of co-cultures of *Lactobacillus plantarum* and *Bifidobacterium animalis* ssp. *lactis* combined with *Streptococcus thermophiles* for the production of bioactive peptides from fermented milk and the ACE inhibitory activity of these peptides *in vitro*. The authors determined that *Streptococcus thermophiles* combined with *Lactobacillus plantarum* and/or *Bifidobacterium animalis* increased production of bioactive peptides and ACE inhibitory activity compared to *Streptococcus thermophiles* alone.

**Table 2.** Cardioprotective peptides derived from milk using fermentation proteolytic procedures.

Original Proteins	Microbial Cultures	Peptide Sequences	References
$\beta$ -casein and k-casein	<i>Lactobacillus helveticus</i> and <i>Saccharomyces cerevisiae</i>	VPP and IPP	[48]
$\beta$ -casein and k-casein	<i>Lactobacillus helveticus</i> LBK16H	VPP and IPP	[49]

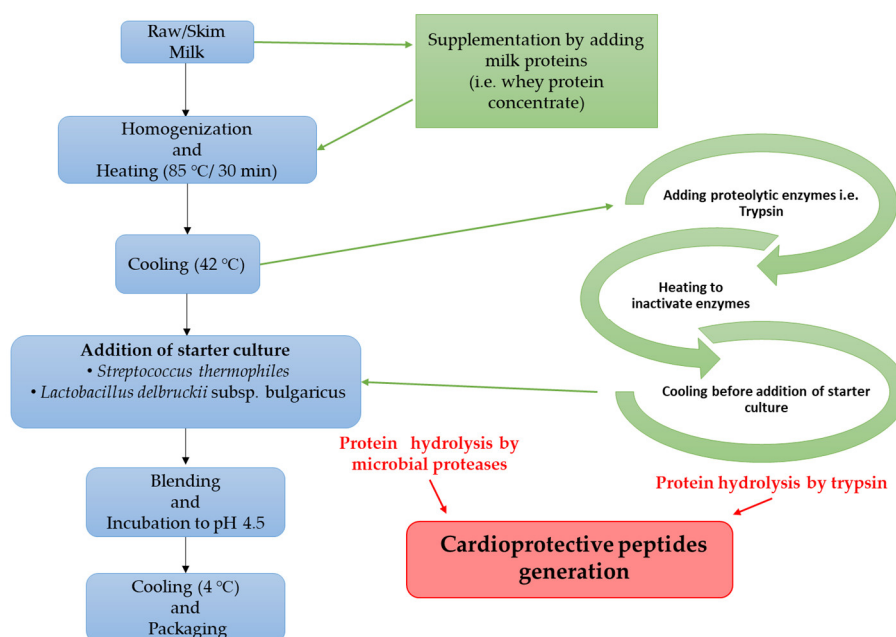
$\beta$ -casein and $\alpha$ <sub>1</sub> -casein	<i>Lactobacillus</i> GG and enzymes + pepsin and trypsin	YFPFAVPYQRTTMPLW	[50]
Whey proteins	<i>Lactobacillus helveticus</i> CPN 4	YP	[51]
$\beta$ -casein	<i>Lactobacillus rhamnosus</i> + digestion with pepsin and Corolase PP	DKIHPFYQEPVLVKEAMAPK	[52]
$\beta$ -casein	<i>Lactobacillus delbrueckii</i> ssp. <i>bulgaricus</i>	SKVYPPFGPI	[53]
$\beta$ -casein	<i>Streptococcus salivarius</i> ssp. <i>thermophiles</i> + <i>Lactococcus lactis</i> biovar. <i>diacetylactis</i>	SKVYP	[53]
$\beta$ -lactoglobulin	<i>Kluyveromyces marxianus</i> var. <i>marxianus</i>	YLLF	[54]
$\beta$ -casein	<i>Enterococcus faecalis</i> CECT 5727	LHLPLP and LVYPPFGPIPNLSLPQNIPP	[55]
Whole milk	<i>Enterococcus faecalis</i> TH563 and <i>Lactobacillus delbrueckii</i> subsp. <i>bulgaricus</i> LA2	Not identified	[56]
Whole milk	<i>Bifidobacterium bifidum</i> MF 20/5 and <i>Lactobacillus casei</i> YIT 9029	Not identified	[57]
$\beta$ -casein	<i>Enterococcus faecalis</i> BCS27	VVVPFF and ENLLRF	[58]
$\beta$ -casein	<i>Bifidobacterium bifidum</i> MF 20/5	LVYPPF	[59]
$\kappa$ -casein and $\alpha$ <sub>2</sub> -casein	<i>Kluyveromyces marxianus</i> Z17	VLSRYP and LSFF	[60]
Whole goat milk	Wild <i>Lactobacillus plantarum</i> 69	Not identified	[61]
$\beta$ -casein derived from camel milk	<i>Leuconostoc lactis</i> PTCC1899	MVPYPQR	[62]

Camel milk has been consumed traditionally for its biological benefits in traditional medicine, however, the knowledge of the mechanisms of action for these health benefits have remained under-explored to date. During the fermentation of camel milk, different researchers reported the release of bioactive peptides. Recent studies have shown the ACE-inhibitory activity of peptides released during the fermentation of camel milk with *Lactobacillus rhamnosus* MTCC 5945 as indicated by Solanki and Hati [63]. These authors identified nine peptides, MQTDMIFTIGPA, VRTPVTVQTKVDNIKKY, EQAGRQRQGG, VRTPVTVQTKVDNIKKY, AXEAIFGAVVXIDL, VIAGGCAAIIG, GLVASIPR, QCDIMIFTIGPA, and VNPNTPIR, all of which show high ACE inhibitory activities [63].

It is worth exploring the differences between the cardioprotective effects of bioactive peptides derived from the fermentation of milk obtained from various animal sources including bovine, camel, goat, and so on. However, there is currently no information or scientific reports on this aspect. Further research will be needed to achieve a comprehensive knowledge of this topic. In silico procedures could aid researchers to achieve preliminary findings predicting the peptides released from known and sequenced milk proteins. In a research, goat milk, a perfect food source similar to human milk, was analyzed in silico by performing hydrolysis with pepsin and chymotrypsin A to obtain some bioactive peptides with ACE inhibitory activity. Several peptides of variable length (di-to undeca-peptides) were identified from  $\alpha$ -S1,  $\alpha$ -S2, and  $\beta$  casein fractions [64].

### 3. Bioactive Peptides from Yogurt

Milk fermentation during yogurt production by LAB has been researched as a cost-efficient and practical procedure to obtain bioactive peptides with cardioprotective activities [65,66] as summarized in Figure 2. As depicted in this figure, the incorporation of raw milk with additional proteins (i.e., whey protein concentrate) and proteolytic enzymes before the addition of a starter culture results in enhanced generation of cardioprotective peptides.



**Figure 2.** Generation of cardioprotective peptides during yogurt production process.

Regular consumption of yogurt has been linked to decreased risk of high blood pressure (17%) and CVD (21%) [67], which is directly related with the contents of bioactive peptides generated either by enzymatic hydrolysis or during the fermentation process as well as during the GI digestion of the products [68–70].

There are many ACE-inhibitory bioactive peptides discovered from yogurt as well as other peptides that can exert an antihypertensive activity through other mechanisms including inhibition of endothelin-1 release [71], enhancement of vasodilation activity of bradykinin [72], improvement of nitric oxide generation from endothelium [49], and binding to opiate receptors to stimulate the vasodilatory activity [66,73].

Among the large volume of research performed to discover cardioprotective peptides from fermented dairy products [44–47,62,63,74], only a few studies have reported these peptides from yogurt [66,75–77]. Milk fermentation using LAB could be considered as a prominent procedure to generate cardioprotective bioactive peptides from proteins, especially caseins [74]. It is reported that VPP and IPP are the two main bioactive peptides generated in yogurt, with a similar mechanism of ACE inhibition to that of synthetic drugs, such as captopril and lisinopril [77]. Increasing the protein content and using proteolytic bacteria strains in yogurt led to the release of the peptides  $\alpha$ S1-casein f(24–32) and  $\beta$ -casein f(193–209) with ACE-inhibitory activity [75]. Papadimitriou et al. [76] prepared two types of traditional Greek sheep yogurt and analyze the physicochemical and cardioprotective properties of the products. One yogurt was made using a normal culture of *Lactobacillus delbrueckii* subsp. *bulgaricus* Y10.13 and *Streptococcus thermophilus* Y10.7, while the other yogurt type included *Lactobacillus paracasei* subsp. *paracasei* DC412. The authors identified the peptide YPVEPFTE with high ACE-inhibitory activity ( $IC_{50}$  0.37 mg/mL), derived from  $\beta$ -casein 114–121. This peptide was also identified from  $\gamma$ -casein

[78]. Further research into this peptide revealed that its cardioprotective mechanism of action was related to the inhibition of ACE and to blocking bradykinin-degrading enzymes [72]. Additional research is needed to clarify the cardioprotective effects and mechanisms of action of bioactive peptides in yogurt produced by various starter cultures, as well as the differences in microbial proteolytic systems that could lead to countless bioactive peptides enriching the final products.

#### 4. Bioactive Peptides from Cheese

Bioactive peptides are prominent components in different types of cheese. The application of advanced peptidomic approaches using techniques, such as mass spectrometry in combination with bioinformatics-based procedures, demonstrated that thousands of bioactive peptides could be generated during the cheese making process [79,80]. Bioactive peptides contribute not only to cheese flavor and texture, but also reveal various health-promoting activities, such as cardio-protection, immunomodulation, and antimicrobial and antioxidant properties [81–84].

Amongst all the cardioprotective peptides described in the literature, the peptides IPP and VPP have been identified in 36 kinds of cheese. VPP concentration ranged from 0 to 224 mg/kg cheese, while IPP contents varied from 0 to 95.4 mg/kg cheese, with the highest concentrations of both (224.1 and 95.4 mg/kg for VPP and IPP, respectively) identified in the hard cheese “Hobelkäse from the Bernese Oberland” that also had the highest ACE-inhibitory activity ( $IC_{50}$  2.6 mg/mL) [85]. The differences appreciated in the contents of these bioactive peptides relate to processing conditions including raw milk pre-treatments, the microbial cultures applied as well as the scalding and ripening conditions. Hence, it is highly recommended to generate a reproducible process to produce cheese containing high and constant concentrations of these bioactive peptides that could be enter the market of nutraceuticals [86].

Several studies describing and identifying bioactive peptides in multiple varieties of cheese are summarized in Table 3. From all these data reported in the literature, it can be concluded that there are several factors affecting the production of cardioprotective peptides during the cheese-making process including the type of cheese, microbial cultures used, and the original protein sources. Moreover, the ripening process has also strongly influenced the generation of peptides and the health-enhancement benefits of the final products [12]. Ripening is a prominent step in cheese making that relates specifically to the enzymatic coagulation process and enhances the flavor and texture properties of the final product. Several biochemical reactions—including proteolysis, lipolysis, glycolysis, and free fatty acids catabolism [87]—can affect the quality of the cheese, with proteolysis being the most relevant for the purpose of generation of bioactive peptides. The main agents responsible for the proteolytic process during ripening include enzymes from residual coagulant, plasmin from milk, microbial enzymes secreted from primary and secondary cultures or bacterial contaminants, as well as proteases appended to speed up the ripening process [87,88]. The generation of bioactive peptides is likely to happen mainly at an early stage of cheese ripening as the residual coagulant and plasmin hydrolyze caseins to form large and medium-size peptides. Subsequently, other proteolytic agents come apart to generate small bioactive peptides and amino acid residues with cardioprotective effects [18,88].

**Table 3.** Bioactive peptides with potential cardioprotective effects derived from cheese.

Cheese Type	Protein	Culture	Peptide Sequence	References
Cheddar	$\kappa$ -CN	<i>Lactococcus lactis</i> subsp. <i>lactis</i> and <i>L. lactis</i> subsp. <i>cremoris</i> with adjunct culture of <i>Lactobacillus acidophilus</i> LAFTI® L10	ARHPPHPH	[89]
	$\alpha_{s1}$ -CN		RPKHPIKHQ	
	$\alpha_{s1}$ -CN		RPKHPIK	
	$\alpha_{s1}$ -CN		RPKHPI	
	$\alpha_{s1}$ -CN		FVAPFPEVF	

	$\beta$ -CN		YQEPVLGPVRGPFPIIV	
White brined-cheese	Casein	<i>L. lactis</i> subsp. <i>lactis</i> and <i>L. lactis</i> subsp. <i>cremoris</i> with adjunct culture of <i>Lactobacillus helveticus</i>	Not identified	[90]
Valdeón	$\alpha_{s1}$ -CN $\beta$ -CN	<i>Penicillium roqueforti</i>	DAYPSGAW DKIHPP	[91]
Grana Padano	$\beta$ -CN	<i>L. helveticus</i> is added to raw milk prior to renneting	HLPLP	[92]
Parmigiano Reggiano	$\beta$ -CN $\beta$ -CN $\beta$ -CN	Natural whey starter prior to renneting	VPP IPP LHLPLP HLPLP	[93]
Prato	$\alpha_{s1}$ -CN	<i>L. lactis</i> subsp. <i>lactis</i> and <i>L. lactis</i> subsp. <i>cremoris</i>	FVAPFPEVF	[94]

Atanasova et al. [95] researched the presence of cardioprotective peptides and free amino acids in Bulgarian goat, sheep, and cow white brined cheeses, generated using the same microbial culture. The main bioactive peptides with ACE inhibitory activities were identified from  $\alpha_{s1}$  (RPKHPIKHQ.G, RPKHPIKHOGLPQEVLN.E, K.HPIKHQ.G, V. AP-FPEVF.G, L.KKYKVPQL.E, and Y.KVPQL.E) and  $\beta$ -CN (Q.DKIHPF.A). The authors also mentioned that no cardioprotective peptide were identified from  $\alpha_{s2}$ . In another research, more than 100 bioactive peptides with potential cardioprotective effects were identified from Gouda cheese using *in silico* and *in vitro* approaches [96]. As the authors illustrated, the identified bioactive peptides were encrypted in different casein sequences including  $\alpha_{s1}$ ,  $\alpha_{s2}$ ,  $\beta$ , and  $\kappa$ . Altogether, bioactive peptides derived from different types of cheese obtained by various processing procedures can be used as cardioprotective agents, there are limited studies evaluating the presence of bioactive peptides in different types of cheese using multiple bacterial cultures specific for those cheese varieties. Moreover, there is still research needed to evaluate the consistent presence of these compounds as well as their availability and effectiveness *in vivo*.

## 5. Bioactive Peptides from Kefir

Kefir is a beverage with a long history of production and consumption, with sour and slightly alcoholic flavor manufactured from milk fermentation originally in the Caucasian Mountains. This product, which is a result of milk fermentation by a mixed microflora in kefir grains, is different in composition and sensory properties to fermented milk [97–99]. Evidence has shown that the cardioprotective effects of kefir are related to the presence of bioactive peptides generated during fermentation process of this product. In a study performed by Şanlı et al. [100], the effects of adjunct microbial cultures on ACE inhibitory and peptide profile of kefir were examined. This study revealed that prolonged storage of kefir fermented with *Lactobacillus helveticus* resulted in products with potent ACE inhibitory activity. These findings were confirmed by multiple authors fermenting kefir with *Lactobacillus helveticus* [101,102]. Shu et al. [103] indicated that goat milk kefir has cardioprotective effects due to the proteolytic activity of microflora of the kefir grains on the casein, generating bioactive peptides with antihypertensive properties. Moreover, the authors also confirmed that the generation of these peptides continued during the storage of the product, leading to changes in the structure of bioactive peptides and, thus, the ACE-inhibition rate of kefir. Amorim et al. [104] researched the cardioprotective mechanism of action of kefir by performing a tryptic digestion of the product and Shotgun proteomics. The authors identified 35 bioactive peptides with ACE-inhibitory activity that could be useful for the generation of new drugs and nutraceuticals.

Overall, the ACE-inhibitory activity of the bioactive peptides identified in kefir could be affected by the conditions used during the process of fermentation (i.e., pH, temperature and time) as well as storage conditions of the product. Thus, further work is necessary

in order to optimize processing and storage conditions of the product to achieve the highest ACE inhibitory activity.

## 6. *In Vivo* and *Ex Vivo* Studies

*In vivo* measurements normally refer to record systolic blood pressure in rat models [105,106]. These procedures are based on feeding the animals a standard diet for 12 h and the oral administration of solutions of bioactive peptides at different concentrations [105,106]. The systolic blood pressure of the animals is measured through a non-invasive method, namely tail cuff, that allows researchers to compare the effects of bioactive peptides and captopril or any other antihypertensive drug [105]. *Ex vivo* studies are performed in isolated arteries monitoring the generation of angiotensin II from angiotensin I by ACE in the arterial walls as angiotensin I has no vasoactive impact on its own [107].

Using these *in vivo* and *ex vivo* procedures, several bioactive peptides have been identified from dairy products (Table 4). Koyama et al. [108] reported that the oral administration of a peptide derived from milk (KFWGK) had a strong and long-lasting antihypertensive activity in spontaneous hypertensive rats (SHR) with a minimum effective dose of 5 µg/kg. An *in vivo* study was also conducted to identify cardioprotective peptides from kefir [104]. Three *in vivo* procedures were conducted in this study including a two-kidney one-clip (2K1C) procedure, plethysmography, and evaluation of ACE activity in blood samples. The authors reported that the treatment with kefir via gavage reduced 37 mmHg of systolic arterial pressure and inhibited 19% of ACE activity.

**Table 4.** *In vivo* and *ex vivo* studies assessing cardioprotective properties of peptides from dairy.

Peptides Sequences	Original Proteins	Methods-Models	Cardioprotective Results	References
LRPVAA	Whey protein (Lactoferrin)	<i>In vivo</i> —SHR *	1 nmol/kg body weight of peptides decreased systolic pressure of SHR	[109]
FKCRRWQWRMKKLGA	Whey protein (lactoferrin B <sub>17-31</sub> )	<i>Ex vivo</i> —RCAS **	20 µM of peptides inhibited ACE-dependent angiotensin I-induced contraction	[110]
NI	Whey protein (Lactoferrin)	<i>Ex vivo</i> —RCAS ***	4.49 mg/mL of peptides inhibited ACE-dependent angiotensin I-induced contraction	[111]
RRWQWR and WQ	Whey protein (lactoferrin B <sub>20-25</sub> )	<i>In vivo</i> —SHR	10 mg/kg body weight of peptides decreased systolic pressure of SHR	[112]
FKCRRWQWRMKKLGAP RRWQWR CRRWQWR KCRRWQWR FKCRRWQWR FKCRRWQW FKCRRW	Whey protein (lactoferrin B <sub>17-32</sub> ) (lactoferrin B <sub>20-25</sub> ) (lactoferrin B <sub>19-25</sub> ) (lactoferrin B <sub>18-25</sub> ) (lactoferrin B <sub>17-25</sub> ) (lactoferrin B <sub>17-24</sub> ) (lactoferrin B <sub>17-22</sub> )	<i>Ex vivo</i> —RCAS	20 µM of peptides inhibited ACE-dependent angiotensin I-induced contraction	[112]
HLPLP, HLPL, LPLP and HLP	Milk (β-casein)	<i>In vivo</i> —SHR	7 mg/kg body weight of peptides decreased systolic pressure of SHR	[113]
IPP and LKP	Milk	<i>In vivo</i> —Isoflurane-anaesthetised rats intra-jejunal <i>Ex vivo</i> —isolated jejunal tissue from Isoflurane-anaesthetised rats	24 µM of peptides showed transepithelial permeability 3 µM of peptides showed transepithelial permeability	[107]

IW IW, EW and WL	Milk	<i>In vivo</i> —SHR <i>Ex vivo</i> —isolated arota of male Wistar rats	19 mg/kg body weight of peptides decreased systolic pressure of SHR 10 $\mu$ M of peptides decreased the angiotensin I/angiotensin II ratio	[114]
YQK	Milk (casein)	<i>In vivo</i> —SHR	1–9 19 mg/kg body weight of peptides decreased systolic pressure of SHR	[115]

\* Spontaneously hypertensive rats. \*\* Rabbit carotid arterial segments. \*\*\* Not indicated.

It is very important to know the mechanism of antihypertensive peptides in the body. Gleeson, Brayden, and Ryan [107] measured the intestinal permeability of two cardioprotective peptides with sequences of Isoleucine–Proline–Proline and Leucine–Lysine–Proline using *ex vivo* and *in vivo* models. The authors illustrated that the aforementioned peptides can permeate either through PepT1-mediated uptake or the paracellular route in the small intestine.

In a study conducted by Xue, Wang, Hu, Wu, Wang, Wang, and Yang [115], the authors generated and identified a highly stable (multiple pH and temperature) cardioprotective peptide, namely YQK, from bovine milk casein hydrolyzed by pepsin and trypsin. *In vivo* experiments revealed the antihypertensive effects of this peptide when administered orally to SHR, significantly reducing the systolic blood pressure of the treated animals. In another study, 20 male SHR were used to assay the cardioprotective effect of three peptides (LIWKL, RPYL, and LNNSRAP) derived from a bovine lactoferrin hydrolysate [116]. The results of this research indicated that the three peptides studied were efficient when decreasing blood pressure *in vivo*, with the peptide LNNSRAP being the one with the highest antihypertensive activity. The authors also performed an *ex vivo* analysis using six male New Zealand White rabbits and the results revealed that the peptides RPYL and LIWKL significantly inhibited ACE in comparison with the control sample. In some cases, conflicting results from *in vitro* and *in vivo* experiments achieved with bioactive peptides can be observed. For instance, as Geerlings et al. [117] reported, the bioactive peptides with the sequences of TGPIP, SLPQ, and SQPK from goat milk had higher *in vitro* IC<sub>50</sub> compared to the captopril, although the *in vivo* studies showed similar activities. In such cases and more severe conflict cases, it is necessary to develop more comprehensive and integrated studies accounting for all the available information including *in vitro*, *in vivo*, *ex vivo*, and *in silico* studies to be able to make decisions based on valid and reproducible data.

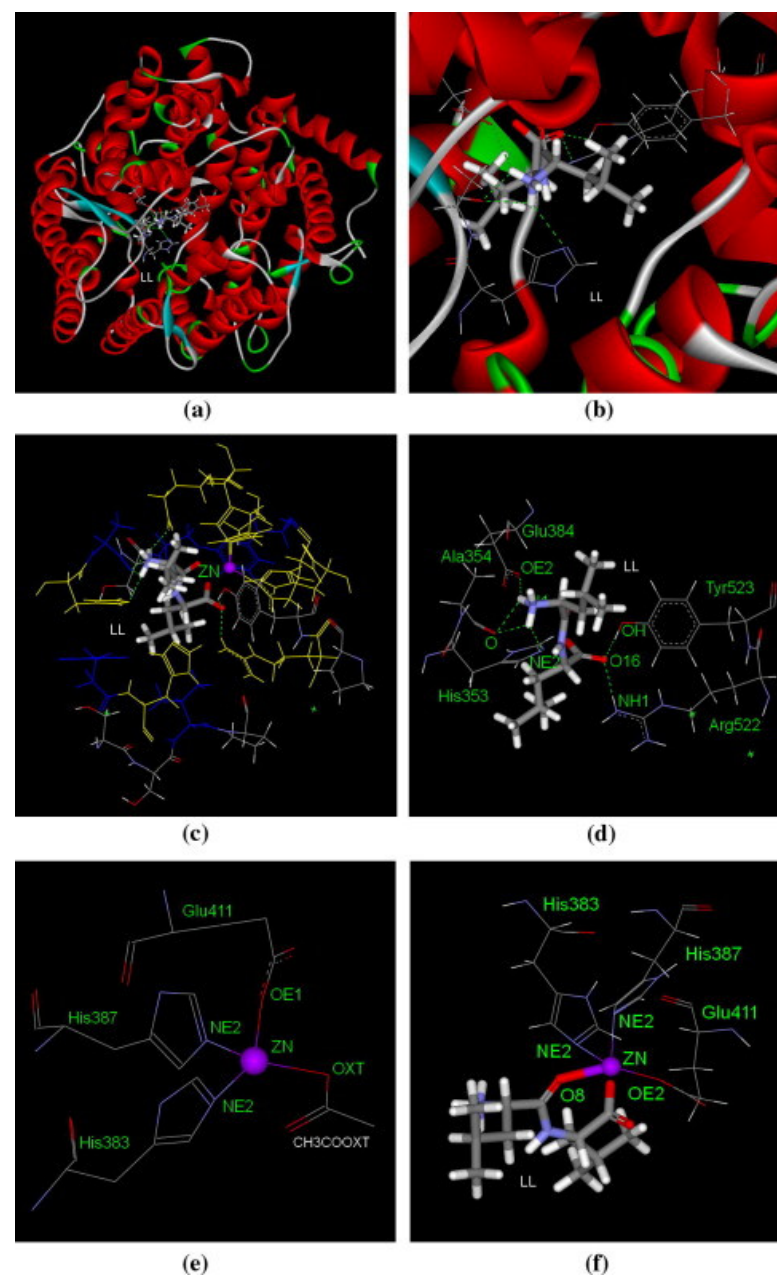
## 7. Structure-Function Relationships of Bioactive Peptides

The chemical structure of bioactive peptides for enhanced cardioprotective properties has not been fully elucidated to date. However, several studies have identified few structural features of peptides affecting their ACE inhibitory activity, one of the main mechanisms of the cardioprotective effects of peptides [118,119].

The amino acid sequence and the presence of certain metals can significantly influence the ACE inhibitory activity of bioactive peptides. The presence of hydrophobic amino acids at each of the three C-terminal positions and basic amino acids (lysine, arginine, and histidine) at the C-terminus of the bioactive peptides can significantly increase their ACE inhibitory activity [118,119]. The presence of proline at the C-terminus can lock the -COO group of the peptide into a conformation suitable for interacting with the ACE active site [81,120]. Studies have revealed that the presence of proline at the antepenultimate position can enhance their binding to the ACE active site [81,121]. These structural features were confirmed in the peptides DKIHPP and DKIHPPF derived from Manchego cheese [122].

Moreover, the presence of Zn<sup>2+</sup> ion at the ACE active site is also a key factor for the cardioprotective effects of the peptides [123]. To explain this, it is worth noting that the

ACE belongs to the category of zinc proteases which means it needs this ion as a cofactor to react with the substrate. The ACE inhibitory peptides can form a distorted geometry surrounding the  $Zn^{2+}$  that assists to maintain the peptide–ACE complex leading to a stronger enzyme inhibition [124]. To clarify the structure–function relationship of cardio-protective peptides and their interaction with ACE enzyme several molecular docking techniques can be applied to study these interactions (see Figure 3). During the last few decades, the improvement of molecular modelling innovation has displayed huge progress, particularly since the 2013 Nobel Prize in Chemistry was granted [125]. Among all molecular modelling procedures, molecular docking is the most widely applied method [126].



**Figure 3.** General overview of peptides (LL) interaction with ACE. (a) ACE structure and its best docking poses (grey) at the active site, (b) regional view of the best docking poses at the active site, (c) ACE-LL interaction view at the catalytic site (see the zinc ion in the center of the interactions), (d) the best docking poses of LL (grey) at the active site, (e) tetrahedrally coordinated zinc ion with the ACE residues before docking, and (f) interactions between LL and zinc ion at the ACE active site after docking. ACE hydrophobic and hydrophilic residues are represented in blue and yellow,

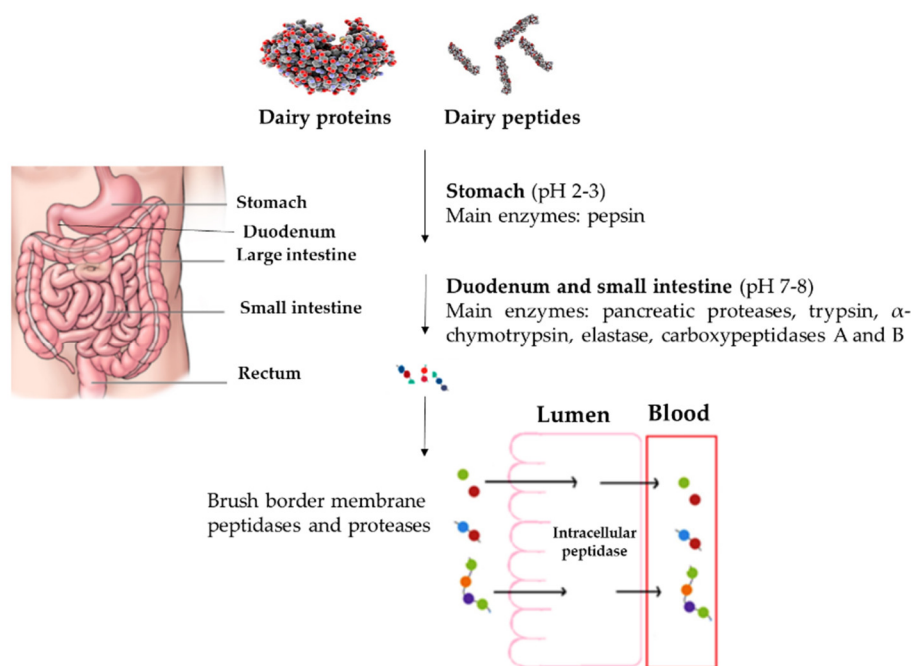
respectively. Other residues on active site in grey, and zinc atoms in purple. Green dashed lines and grey bold lines represent the hydrogen bonds and zinc coordination bonds, respectively. Reproduced from Pan, Guo, Zhao, and Cao [123] with permission from Elsevier 2011.

The process for the generation of novel bioactive peptides with cardioprotective effects includes several steps of isolation and purification before the identification of the compounds, which are laborious and expensive and could also lead to missing some of these compounds during the various activity-based purification steps. Quantitative structure–activity relationship (QSAR) is a novel strategy used to discover novel bioactive peptides with potential cardioprotective effects [127,128]. Furthermore, by gathering information about the structure–function relationship of dairy bioactive peptides, researchers will be capable of designing more potent cardioprotective agents. QSAR is a modelling tool based on chemometrics to elucidate and establish the relationship between chemical structures and their biological activities by using statistical multiple regression analysis, such as partial least squares. Therefore, the biological activity data can be modelled as a function of the structure of the bioactive peptides [129,130]. Several studies have investigated QSAR for the ACE-inhibitory activity [33,34,131–139] and renin-inhibitory activity [140] of dairy bioactive peptides. To the best of our knowledge, only a few QSAR studies have been performed on renin-inhibitory bioactive peptides. This could be due to the novelty of this area, as few peptides with renin inhibitory activity have been discovered to date. The results of the QSAR analysis indicated that bioactive peptides with potent renin inhibitory activity contain mainly bulky amino acids (tryptophan, tyrosine, or phenylalanine) at the C-terminus and hydrophobic and small amino acids (valine, leucine, isoleucine, and alanine) at the N-terminus. The presence of tryptophan at the C-terminus of bioactive peptides is predicted to be a key factor affecting their renin inhibitory activity. To confirm this claim, four small bioactive peptides (LW, IW, AW, and VW) have been further studied due to their predicted potent renin inhibitory activities. These biological activities could not be confirmed experimentally for AW and VW; however, the peptides LW and IW were confirmed as powerful inhibitors of renin [128,140].

## 8. Effect of GI Digestion on Bioactive Peptides

In the gastrointestinal tract (GIT), dairy bioactive peptides may be further hydrolyzed by endogenous and microbial proteases. The breakdown of bioactive peptides into smaller peptides and free amino acids improves their bioavailability of these compounds [141]; however, this hydrolysis may reduce the cardioprotective effects of the bioactive peptides [142].

The full range of modifications of dairy bioactive peptides passing through GIT is not fully understood yet. It should be considered that there are some changes that may happen to proteins and bioactive peptides structures and biological activities due to the effects of GI juices as well as enzymes as seen in Figure 4. Therefore, GI digestion of dairy products may dramatically affect their biological activities, either by the generation of new bioactive peptides from their original proteins or by further hydrolysis of bioactive peptides, leading to the release of peptide fractions with different biological effects than those pre-digestion [80,91,143].



**Figure 4.** The effects of gastrointestinal tract on dairy proteins and peptides.

Different factors affect the resistance of bioactive peptides against GI digestion including their hydrophobicity, acid/base nature, and amino acid composition and peptide sequence, especially the type of C- or N-terminus amino acid residues [144]. Even though hydrophobicity is a key parameter in the ACE-inhibitory activity of bioactive peptides, this factor is indirectly related to the bioactive peptides' resistance to GI digestion [145]. Similar results associating an increased stability of hydrophilic peptides during GI digestion were reported by Xie et al. [146]. It is also proven that the bioactivity of negatively charged peptides derived from milk is better preserved during passing through GIT followed by positively charged and neutral peptides [145,147]. The development of encapsulation methods for the protection of orally administrated bioactive peptides during GI digestion and the preservation of their biological properties has shown promising results. There are three types of encapsulation methods for bioactive peptides, including protein-based, polysaccharide-based, and lipid-based [148]. Microemulsions and emulsified microemulsions, emulsions, solid lipid particles, liposomes, and polymer microgels have been well established strategies for the protection of bioactive peptides so far [149]. In the case of milk- and dairy-derived peptides, Zhang et al. [150], encapsulated in a liposome the milk-derived ACE inhibitory peptide RLSFNP, for its protection during GI digestion and to enhance its intestinal bioavailability.

## 9. Allergenicity and Toxicity of Bioactive Peptides

Immunoglobulin E (IgE)-mediated reactions are one of the most prominent forms of food allergy; thus, a disturbance of the IgE binding to its epitope could decrease the allergenicity of different compounds [151]. Based on this, treatments such as proteolytic hydrolysis, microbial fermentation, heating, irradiation, and high hydrostatic pressure are currently applied to alleviate the immunoreactivity of certain allergens [152–156].

Proteolytic hydrolysis is currently used in the food industry to prepare hypoallergenic milk formulas [155,157]. Although milk formulas are produced following strict standards, the presence of peptides can stimulate allergic reactions [158,159]. Some allergenic peptides, such as NSAEPEQSLAC, GAQEQNQEPIRCEKDERF, and VRTPEVDDEAL, have been discovered in these hypoallergenic formulas [147,160]. In a study performed by [161], three peptides derived from milk casein were analyzed for allergenicity using a mast cell allergy model from mouse bone marrow. The results of the

incubation of mast cells with peptides indicated the release of histamine and tryptase, markers for mast cells degranulation and amongst all the peptides tested, casomorphin-5 exhibited the maximum allergenic response [161].

The use of certain synthetic drugs to prevent CVD may have adverse secondary effects, thus, dairy products and bioactive peptides have been researched as nutraceuticals against these diseases. Toxicological experiments performed to date revealed no toxicity of dairy bioactive peptides [162–165]. Maeno, Nakamura, Menear and Bernard [163] reported that there were no physiological or toxicological changes in-life or postmortem in rats when administering fermented milk containing bioactive peptides. The authors appreciated a single-dose lowest-observable-effect level (LOEL) greater than 4000 mg/kg and a repeated-dose result did not support the identification of a target organ toxicity, with no evidence to support the establishment of a LOEL or maximally tolerated dose (MTD), both being greater than 2 g/kg/day for up to 28 consecutive days [163]. An *in vitro* study has demonstrated that bioactive peptides derived from dairy-affected malignant cells with no harm to normal cells lines [166]. A study performed by Gleeson et al. [167] revealed that IPP, which is an ACE inhibitory peptide isolated from  $\beta$ -casein, has no cytotoxicity in intestinal (Caco-2) and liver (HepG2) cell lines.

Mutagenicity analysis using bacterial cells are used as a sensitive indirect assay for DNA damage detection [168]. The mutagenicity of a milk-derived peptide (VPP) was tested using *Salmonella* Typhimurium strains TA98, TA100, TA1535, and TA1537 and *Escherichia coli* strain WP2uvrA [169]. The authors reported no DNA damage induced by this antihypertensive peptide. Dairy bioactive peptides not only have shown no genotoxicity, but also in some cases have shown anti-mutagenicity activity [170,171]. Moreover, not toxic signs have been reported for dairy cardioprotective peptides (VPP, IPP, VLSELPEP, LEQVLPRD) using animal models (rats and dogs) in several reports [163,172,173].

## 10. Legislation and Regulatory Requirements for Bioactive Peptides

Functional foods have strong influence on human health beyond their typical dietary characteristics; hence, they ought to be consumed as a component of a healthy diet. In the European Union (EU), one of the main regulations to consider when marketing novel products is the 258/97/CE [174]. This regulation establishes the requirements for the placement in the market of “novel foods”, defined as those that were not used for human consumption to a significant degree within the EU before 15 May 1997 [174]. In the EU, products can be tagged with two classes of claims including health and nutrition. The category of nutritional claims has been established concerning superior nutritional properties, e.g., low fat, high-fiber products, and enriched with health promoting vitamins and amino acids. The relationship between a food/ingredient and human well-being is expressed as a “health claim”. Considering the health claims related to bioactive peptides, there are three clearly distinguished claims including those of basic functions, reduction of the risk of diseases and finally those related to enhancements of children’s health [175]. The above-mentioned health claims for improved well-being are well recognized in the case of milk peptides as promoters of the immune system functions [176], egg peptides for lowering the risk of diseases caused by cholesterol [177,178], and fish peptides for developing children’s health [175,179].

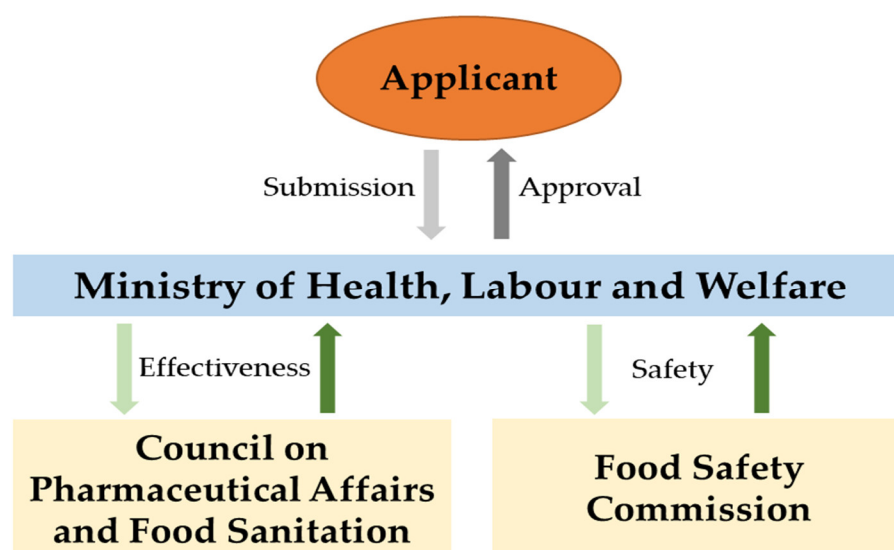
To establish claims and get approved on the application of bioactive peptides in food products, the organizations and companies interested in this commercialization need to submit their request to the European Food Safety Authority (EFSA) through an EU member country. Afterwards, the Dietetic Products, Nutrition and Allergies (NDA) panel in the EFSA analyzes the association of bioactive peptides with the claimed health promoting potential based on the regulation of EC (1924/2006) [180], ensuring an effective functioning of the internal EU market, while protecting consumers. Then, following a close investigation of the *in vitro* and *in vivo* reliability, potency, safety, dose–response levels, and stability of the products, a decision on these claims is established. It is a general agreement among all related researchers and developers that human clinical trials are necessary

to ensure the health claims of products containing bioactive peptides. In addition, the EFSA requests information on the applied peptides in food products that includes the peptides' quantity, peptides' sequence and length (number of amino acids in peptides sequence), amino acid composition of peptides, molecular weight (MW) distribution, generation procedure, physicochemical characteristics, and conditions to utilize the products [181]. As an example of these legislative procedures in the EU, a product containing cardioprotective peptides with the potential of lowering the blood pressure generated from bonito with the peptide sequence of LKPNM was refused by the EFSA due to insufficient scientific evidence of its efficacy in humans [182].

There are several other parameters that are important for EFSA to standardize a peptide-containing product, including the amount of food vital to achieve the illustrated health benefit, a confident assertion addressing who should not use the product, and a caution notification about the health risks related to excessive consumption [180]. As an example, a market-accessible peptide (Valtyron<sup>®</sup>) derived from sardine with potent ACE inhibitory activity was registered by EFSA. This product must be marked with a label for its specific utilization in some dairy (such as fermented milk, yogurt, powdered milk, and yogurt drink) and non-dairy products (such as beverages, stews, soups, and breakfast cereals) with a maximum consumption limit of 0.6 g per serving.

In the United States of America (USA), one of the largest markets for food products with health benefits, the Food and Drug Administration (FDA) provides a full definition of dietary supplements as “a product (other than tobacco) intended to supplement the diet that bears or contains one or more of the following dietary ingredients: (A) a vitamin; (B) a mineral; (C) an herb or other botanical; (D) an amino acid; (E) a dietary substance for use by man to supplement the diet by increasing the total dietary intake; or (F) a concentrate, metabolite, constituent, extract, or combination of any ingredient described in clause (A), (B), (C), (D), or (E)” (FDA 1994). The terms “functional foods” or “nutraceuticals” are foods regulated under the authority of the Federal Food, Drug, and Cosmetic Act, even though they are not specifically defined by law [183].

In the case of Japan, this country has the world's first policy to allow the commercialization of functional foods, the FOSHU (Foods for Specific Health Use). Established in 1991 by the Ministry of Health, Labor and Welfare, who approved the term, FOSHU is officially used to designate foods that have enough scientific evidence to support health claims [184]. The overall process for approval of FOSHU is summarized in Figure 5.



**Figure 5.** Summary of the procedures for the approval of FOSHU. Content of the image modified from the Japanese Ministry of Health, Labor and Welfare [185].

In Japan, there are some commercially available functional products containing bioactive peptides approved by FOSHU. These products include sour milk, milk casein hydrolysate, Katsuobushi oligopeptide, Mycoleptodonoide saitchisonii extract, bioactive peptide derived from sardine, seaweed, and sesame, all with cardioprotective effects via ACE inhibition. To the best of our knowledge, there are a few products containing cardioprotective peptides derived from milk that are listed in the Table 5. Further research is still required to clarify the exact mechanism and intake efficiency of these antihypertensive peptides [186].

**Table 5.** Commercial products containing cardioprotective peptides derived from milk.

Item Names	Type	Peptides Sequences	Manufacturers	References
Calpis	Sour milk	IPP and VPP	Calpis Co., Ltd., Tokyo, Japan	Patent EP0323283
Evolus	Fermented milk	IPP and VPP	Valio, Ltd., Helsinki, Finland	
Amealbp	Tablets	IPP and VPP	Calpis Co., Ltd., Tokyo, Japan	Patent US6972282
Ameal Peptide	Ingredient	IPP and VPP	Calpis Co., Ltd., Tokyo, Japan	
Casein DP	Soft drink	FFVAPFPEVFGK	Kanebo Co., Ltd., Tokyo, Japan	
C12 Peptide	Ingredient	FFVAPFPEVFGK	DMV International, Veghel, Netherlands	Patent JP62270533
Lowpept	Ingredient	RYLGY and AYFYPEL	Innaves S.A., Pontevedra, Spain	Patent WO012355
BioZate 1	Ingredient	$\beta$ -lactoglobulin fragments	Davisco Foods, Minnesota, USA	Patent US6998259

## 11. Future Perspective and Conclusions

Based on the current scientific evidence provided in different studies, milk from multiple animal species, including cow, goat, camel and others, have the potential to produce multiple cardioprotective peptides via direct processing of milk (fermentation and enzymatic hydrolysis) or by more complex food processes, such as the production of yogurt, cheese, and Kefir. The animal species of origin as well as the processing and storage of products will contribute to the variability of peptides present in these products and, thus, their biological and cardioprotective properties.

Further studies are also needed to evaluate the presence of bioactive peptides in multiple dairy food products as well as to evaluate the effect of the gastrointestinal digestion on the identified peptide sequences. Gastrointestinal digestion of different peptides results in smaller peptide sequences that may have an increased bioavailability [141], but the biological properties of these compounds may be altered or even reduced [142]. The evaluation of the cardioprotective effects of the identified peptides using *in vitro*, *ex vivo* and *in vivo* models, including clinical trials, will be crucial to understand the structure–function relationship of these peptides with their target molecules, establishing clear mechanisms of action that will aid companies and producers to establish clear health claims to market the products following the specifications of the various legislative frameworks available worldwide.

Overall, although further studies on the toxicity and allergenicity of these compounds will still be necessary to establish the safety of each specific product and their recommended/tolerable intakes aiming their safe commercialization, several milk-derived peptides evaluated to date have been shown to be safe, opening a promising scenario for the development and further evaluation of milk-derived products containing bioactive peptides.

**Author Contributions:** Conceptualization, M.G.-V.; methodology, A.M.-K. and M.G.-V.; resources, A.M.-K.; data curation, A.M.-K. and M.G.-V.; writing—original draft preparation, A.M.-K.; writing—review and editing, M.G.-V.; visualization, A.M.-K. and M.G.-V.; supervision, M.G.-V.; project administration, M.G.-V.; funding acquisition, M.G.-V. All authors have read and agreed to the published version of the manuscript.

**Funding:** Department of Agriculture Food and the Marine (DAFM) under the umbrella of the European Joint Programming Initiative “A Healthy Diet for a Healthy Life” (JPI-HDHL) and of the ERA-NET Cofund ERA HDHL (GA No 696295 of the EU Horizon 2020 Research and Innovation Programme).

**Institutional Review Board Statement:** Not applicable.

**Informed Consent Statement:** Not applicable.

**Data Availability Statement:** The data presented in this study are available in the article.

**Acknowledgments:** Armin Mirzapour-Kouhdasht works within the project AMBROSIA funded by the Department of Agriculture Food and the Marine (DAFM) under the umbrella of the European Joint Programming Initiative “A Healthy Diet for a Healthy Life” (JPI-HDHL) and of the ERA-NET Cofund ERA HDHL (GA No 696295 of the EU Horizon 2020 Research and Innovation Programme).

**Conflicts of Interest:** The authors declare no conflict of interest.

## References

- Aluko, R.E. Antihypertensive peptides from food proteins. *Annu. Rev. Food Sci. Technol.* **2015**, *6*, 235–262.
- Cicero, A.F.; Fogacci, F.; Colletti, A. Potential role of bioactive peptides in prevention and treatment of chronic diseases: A narrative review. *Br. J. Pharmacol.* **2017**, *174*, 1378–1394.
- FitzGerald, R.J.; Cermeño, M.; Khalesi, M.; Kleekayai, T.; Amigo-Benavent, M. Application of in silico approaches for the generation of milk protein-derived bioactive peptides. *J. Funct. Foods* **2020**, *64*, 103636.
- Marcone, S.; Belton, O.; FitzGerald, D.J. Milk-derived bioactive peptides and their health promoting effects: A potential role in atherosclerosis. *Br. J. Clin. Pharmacol.* **2017**, *83*, 152–162.
- Gobbetti, M.; Stepaniak, L.; De Angelis, M.; Corsetti, A.; Di Cagno, R. Latent bioactive peptides in milk proteins: Proteolytic activation and significance in dairy processing. *Crit. Rev. Food Sci. Nutr.* **2002**, *42*, 223–239.
- Mohanty, D.; Mohapatra, S.; Misra, S.; Sahu, P. Milk derived bioactive peptides and their impact on human health—A review. *Saudi J. Biol. Sci.* **2016**, *23*, 577–583.
- Oliveira, D.; Fox, P.; O’Mahony, J.A. Byproducts from Dairy Processing. In *Byproducts from Agriculture and Fisheries: Adding Value for Food, Feed, Pharma, and Fuels*; Wiley: West Sussex, UK, 2019; pp. 57–106.
- Semb, A.G.; Ik Dahl, E.; Wibetoe, G.; Crowson, C.; Rollefstad, S. Atherosclerotic cardiovascular disease prevention in rheumatoid arthritis. *Nat. Rev. Rheumatol.* **2020**, *16*, 361–379.
- Balakumar, P.; Maung, U.K.; Jagadeesh, G. Prevalence and prevention of cardiovascular disease and diabetes mellitus. *Pharmacol. Res.* **2016**, *113*, 600–609.
- FitzGerald, R.J.; Murray, B.A.; Walsh, D.J. Hypotensive peptides from milk proteins. *J. Nutr.* **2004**, *134*, 980S–988S.
- Aluko, R.E. Food protein-derived renin-inhibitory peptides: In vitro and in vivo properties. *J. Food Biochem.* **2019**, *43*, e12648.
- Baptista, D.P.; Gigante, M.L. Bioactive peptides in ripened cheeses: Release during technological processes and resistance to the gastrointestinal tract. *J. Sci. Food Agric.* **2021**, *101*, 4010–4017.
- Chaudhary, A.; Bhalla, S.; Patiyal, S.; Raghava, G.P.; Sahni, G. FerriFood: A database of bioactive peptides derived from fermented foods. *Heliyon* **2021**, *7*, e06668.
- Kleekayai, T.; Cermeño, M.; FitzGerald, R.J. The Production of Bioactive Peptides from Milk Proteins. In *Agents of Change*; Springer: Cham, Switzerland, 2021; pp. 447–497.
- Choi, J.; Sabikhi, L.; Hassan, A.; Anand, S. Bioactive peptides in dairy products. *Int. J. Dairy Technol.* **2012**, *65*, 1–12. <https://doi.org/10.1111/j.1471-0307.2011.00725.x>.
- Capriotti, A.L.; Cavaliere, C.; Piovesana, S.; Samperi, R.; Laganà, A. Recent trends in the analysis of bioactive peptides in milk and dairy products. *Anal. Bioanal. Chem.* **2016**, *408*, 2677–2685. <https://doi.org/10.1007/s00216-016-9303-8>.
- Tidona, F.; Criscione, A.; Guastella, A.M.; Zuccaro, A.; Bordonaro, S.; Marletta, D. Bioactive peptides in dairy products. *Ital. J. Anim. Sci.* **2009**, *8*, 315–340. <https://doi.org/10.4081/ijas.2009.315>.
- Hernández-Ledesma, B.; del Mar Contreras, M.; Recio, I. Antihypertensive peptides: Production, bioavailability and incorporation into foods. *Adv. Colloid Interface Sci.* **2011**, *165*, 23–35.
- Korhonen, H.; Pihlanto, A. Technological options for the production of health-promoting proteins and peptides derived from milk and colostrum. *Curr. Pharm. Des.* **2007**, *13*, 829–843.
- Shahbandeh, M. Global Cow Milk Production 2015–2021. Available online: <https://www.statista.com/statistics/263952/production-of-milk-worldwide/> (accessed on 21 April 2022).
- Punia, H.; Tokas, J.; Malik, A.; Sangwan, S.; Baloda, S.; Singh, N.; Singh, S.; Bhuker, A.; Singh, P.; Yashveer, S. Identification and detection of bioactive peptides in milk and dairy products: Remarks about agro-foods. *Molecules* **2020**, *25*, 3328.
- Danquah, M.K.; Agyei, D. Pharmaceutical applications of bioactive peptides. *OA Biotechnol.* **2012**, *1*, 1–7.
- Guo, Y.; Jiang, X.; Xiong, B.; Zhang, T.; Zeng, X.; Wu, Z.; Sun, Y.; Pan, D. Production and transepithelial transportation of angiotensin-I-converting enzyme (ACE)-inhibitory peptides from whey protein hydrolyzed by immobilized *Lactobacillus helveticus* proteinase. *J. Dairy Sci.* **2019**, *102*, 961–975.

24. Huang, S.; Gong, Y.; Li, Y.; Ruan, S.; Azam, S.R.; Duan, Y.; Ye, X.; Ma, H. Preparation of ACE-inhibitory peptides from milk protein in continuous enzyme membrane reactor with gradient dilution feeding substrate. *Process Biochem.* **2020**, *92*, 130–137.
25. Shu, G.; Huang, J.; Bao, C.; Meng, J.; Chen, H.; Cao, J. Effect of different proteases on the degree of hydrolysis and angiotensin I-converting enzyme-inhibitory activity in goat and cow milk. *Biomolecules* **2018**, *8*, 101.
26. Villadóniga, C.; Cantera, A.M.B. New ACE-inhibitory peptides derived from  $\alpha$ -lactalbumin produced by hydrolysis with *Bromelia antiacantha* peptidases. *Biocatal. Agric. Biotechnol.* **2019**, *20*, 101258.
27. Wu, Q.; Zhang, X.; Jia, J.; Kuang, C.; Yang, H. Effect of ultrasonic pretreatment on whey protein hydrolysis by alcalase: Thermodynamic parameters, physicochemical properties and bioactivities. *Process Biochem.* **2018**, *67*, 46–54.
28. Guo, Y.; Pan, D.; Tanokura, M. Optimisation of hydrolysis conditions for the production of the angiotensin-I converting enzyme (ACE) inhibitory peptides from whey protein using response surface methodology. *Food Chem.* **2009**, *114*, 328–333.
29. Mirzapour-Kouhdasht, A.; Moosavi-Nasab, M.; Lee, C.W.; Yun, H.; Eun, J.-B. Structure–function engineering of novel fish gelatin-derived multifunctional peptides using high-resolution peptidomics and bioinformatics. *Sci. Rep.* **2021**, *11*, 7401.
30. Noman, A.; Xu, Y.; AL-Bukhaiti, W.Q.; Abed, S.M.; Ali, A.H.; Ramadhan, A.H.; Xia, W. Influence of enzymatic hydrolysis conditions on the degree of hydrolysis and functional properties of protein hydrolysate obtained from Chinese sturgeon (*Acipenser sinensis*) by using papain enzyme. *Process Biochem.* **2018**, *67*, 19–28.
31. Islam, M.S.; Hongxin, W.; Admassu, H.; Noman, A.; Ma, C.; An Wei, F. Degree of hydrolysis, functional and antioxidant properties of protein hydrolysates from Grass Turtle (*Chinemys reevesii*) as influenced by enzymatic hydrolysis conditions. *Food Sci. Nutr.* **2021**, *9*, 4031–4047.
32. Mazorra-Manzano, M.A.; Mora-Cortes, W.G.; Leandro-Roldan, M.M.; González-Velázquez, D.A.; Torres-Llenez, M.J.; Ramírez-Suarez, J.C.; González-Córdova, A.F.; Vallejo-Córdoba, B. Production of whey protein hydrolysates with angiotensin-converting enzyme-inhibitory activity using three new sources of plant proteases. *Biocatal. Agric. Biotechnol.* **2020**, *28*, 101724.
33. Lin, K.; Zhang, L.-W.; Han, X.; Cheng, D.-Y. Novel angiotensin I-converting enzyme inhibitory peptides from protease hydrolysates of Qula casein: Quantitative structure-activity relationship modeling and molecular docking study. *J. Funct. Foods* **2017**, *32*, 266–277.
34. Lin, K.; Zhang, L.; Han, X.; Meng, Z.; Zhang, J.; Wu, Y.; Cheng, D. Quantitative structure–activity relationship modeling coupled with molecular docking analysis in screening of angiotensin I-converting enzyme inhibitory peptides from Qula Casein hydrolysates obtained by two-enzyme combination hydrolysis. *J. Agric. Food Chem.* **2018**, *66*, 3221–3228.
35. Corrons, M.A.; Liggieri, C.S.; Trejo, S.A.; Bruno, M.A. ACE-inhibitory peptides from bovine caseins released with peptidases from *Maclura pomifera* latex. *Food Res. Int.* **2017**, *93*, 8–15. <https://doi.org/10.1016/j.foodres.2017.01.003>.
36. Tagliacruzchi, D.; Shamsia, S.; Helal, A.; Conte, A. Angiotensin-converting enzyme inhibitory peptides from goats’ milk released by in vitro gastro-intestinal digestion. *Int. Dairy J.* **2017**, *71*, 6–16. <https://doi.org/10.1016/j.idairyj.2017.03.001>.
37. Abdel-Hamid, M.; Otte, J.; De Gobba, C.; Osman, A.; Hamad, E. Angiotensin I-converting enzyme inhibitory activity and antioxidant capacity of bioactive peptides derived from enzymatic hydrolysis of buffalo milk proteins. *Int. Dairy J.* **2017**, *66*, 91–98. <https://doi.org/10.1016/j.idairyj.2016.11.006>.
38. Salami, M.; Moosavi-Movahedi, A.A.; Moosavi-Movahedi, F.; Ehsani, M.R.; Yousefi, R.; Farhadi, M.; Niasari-Naslaji, A.; Saboury, A.A.; Chobert, J.M.; Haertlé, T. Biological activity of camel milk casein following enzymatic digestion. *J. Dairy Res.* **2011**, *78*, 471–478. <https://doi.org/10.1017/s0022029911000628>.
39. Tagliacruzchi, D.; Shamsia, S.; Conte, A. Release of angiotensin converting enzyme-inhibitory peptides during in vitro gastro-intestinal digestion of camel milk. *Int. Dairy J.* **2016**, *56*, 119–128. <https://doi.org/10.1016/j.idairyj.2016.01.009>.
40. Baba, W.N.; Baby, B.; Mudgil, P.; Gan, C.-Y.; Vijayan, R.; Maqsood, S. Pepsin generated camel whey protein hydrolysates with potential antihypertensive properties: Identification and molecular docking of antihypertensive peptides. *LWT* **2021**, *143*, 111135. <https://doi.org/10.1016/j.lwt.2021.111135>.
41. Koirala, S.; Prathumpai, W.; Anal, A.K. Effect of ultrasonication pretreatment followed by enzymatic hydrolysis of caprine milk proteins and on antioxidant and angiotensin converting enzyme (ACE) inhibitory activity of peptides thus produced. *Int. Dairy J.* **2021**, *118*, 105026. <https://doi.org/10.1016/j.idairyj.2021.105026>.
42. Lin, K.; Ma, Z.; Ramachandran, M.; De Souza, C.; Han, X.; Zhang, L.-W. ACE inhibitory peptide KYIPIQ derived from yak milk casein induces nitric oxide production in HUVECs and diffuses via a transcellular mechanism in Caco-2 monolayers. *Process Biochem.* **2020**, *99*, 103–111. <https://doi.org/10.1016/j.procbio.2020.08.031>.
43. Cui, Q.; Sun, Y.; Cheng, J.; Guo, M. Effect of two-step enzymatic hydrolysis on the antioxidant properties and proteomics of hydrolysates of milk protein concentrate. *Food Chem.* **2022**, *366*, 130711. <https://doi.org/10.1016/j.foodchem.2021.130711>.
44. Bao, Q.; Liu, W.; Yu, J.; Wang, W.; Qing, M.; Chen, X.; Wang, F.; Zhang, J.; Zhang, W.; Qiao, J. Isolation and identification of cultivable lactic acid bacteria in traditional yak milk products of Gansu Province in China. *J. Gen. Appl. Microbiol.* **2012**, *58*, 95–105.
45. Chen, H.; Ji, Z.; Shu, G.W.; Xing, H.N. Effect of Probiotic *Lactobacillus* Strains on Angiotensin I Converting Enzyme Inhibitory Activity from Fermented Goat Milk. In *Advanced Materials Research*; Trans Tech Publications Ltd.: Bäch, Switzerland, 2012; pp. 442–445.
46. Shu, G.; Yang, H.; Chen, H.; Zhang, Q.; Tian, Y. Effect of incubation time, inoculum size, temperature, pasteurization time, goat milk powder and whey powder on ACE inhibitory activity in fermented milk by *L. plantarum* LP69. *Acta Sci. Pol. Technol. Aliment.* **2015**, *14*, 107–116.

47. Li, S.; Tang, S.; He, Q.; Hu, J.; Zheng, J. In vitro antioxidant and angiotensin-converting enzyme inhibitory activity of fermented milk with different culture combinations. *J. Dairy Sci.* **2020**, *103*, 1120–1130.
48. Takano, D.T. Anti-hypertensive activity of fermented dairy products containing biogenic peptides. *Antonie Van Leeuwenhoek* **2002**, *82*, 333–340. <https://doi.org/10.1023/A:1020600119907>.
49. Sipola, M.; Finckenberg, P.; Korpela, R.; Vapaatalo, H.; Nurminen, M.L. Effect of long-term intake of milk products on blood pressure in hypertensive rats. *J. Dairy Res.* **2002**, *69*, 103–111. <https://doi.org/10.1017/s002202990100526x>.
50. Wan, J.; Mawson, R.; Ashokkumar, M.; Ronacher, K.; Coventry, M.J.; Roginski, H.; Versteeg, C. Emerging processing technologies for functional foods. *Aust. J. Dairy Technol.* **2005**, *60*, 167–169.
51. Yamamoto, N.; Maeno, M.; Takano, T. Purification and characterization of an antihypertensive peptide from a yogurt-like product fermented by *Lactobacillus helveticus* CPN4. *J. Dairy Sci.* **1999**, *82*, 1388–1393. [https://doi.org/10.3168/jds.S0022-0302\(99\)75364-6](https://doi.org/10.3168/jds.S0022-0302(99)75364-6).
52. Korhonen, H.; Pihlanto, A. Bioactive peptides: New challenges and opportunities for the dairy industry. *Aust. J. Dairy Technol.* **2003**, *58*, 129.
53. Ashar, M.N.; Chand, R. Antihypertensive peptides purified from milks fermented with *Lactobacillus delbrueckii* ssp. *bulgaricus*. *Milchwissenschaft* **2004**, *59*, 14–17.
54. Barrett, E.; Hayes, M.; Fitzgerald, G.F.; Hill, C.; Stanton, C.; Rose, R.P. Fermentation, cell factories and bioactive peptides: Food grade bacteria for production of biogenic compounds. *Aust. J. Dairy Technol.* **2005**, *60*, 157–162.
55. Quirós, A.; Ramos, M.; Muguerza, B.; Delgado, M.A.; Miguel, M.; Aleixandre, A.; Recio, I. Identification of novel antihypertensive peptides in milk fermented with *Enterococcus faecalis*. *Int. Dairy J.* **2007**, *17*, 33–41. <https://doi.org/10.1016/j.idairyj.2005.12.011>.
56. Regazzo, D.; Da Dalt, L.; Lombardi, A.; Andrighetto, C.; Negro, A.; Gabai, G. Fermented milks from *Enterococcus faecalis* TH563 and *Lactobacillus delbrueckii* subsp. *bulgaricus* LA2 manifest different degrees of ACE-inhibitory and immunomodulatory activities. *Dairy Sci. Technol.* **2010**, *90*, 469–476. <https://doi.org/10.1051/dst/2010009>.
57. Gonzalez-Gonzalez, C.R.; Tuohy, K.M.; Jauregi, P. Production of angiotensin-I-converting enzyme (ACE) inhibitory activity in milk fermented with probiotic strains: Effects of calcium, pH and peptides on the ACE-inhibitory activity. *Int. Dairy J.* **2011**, *21*, 615–622. <https://doi.org/10.1016/j.idairyj.2011.04.001>.
58. Gútiérrez, L.; Gómez-Sala, B.; Recio, I.; del Campo, R.; Cintas, L.M.; Herranz, C.; Hernández, P.E. *Enterococcus faecalis* strains from food, environmental, and clinical origin produce ACE-inhibitory peptides and other bioactive peptides during growth in bovine skim milk. *Int. J. Food Microbiol.* **2013**, *166*, 93–101. <https://doi.org/10.1016/j.ijfoodmicro.2013.06.019>.
59. Gonzalez-Gonzalez, C.; Gibson, T.; Jauregi, P. Novel probiotic-fermented milk with angiotensin I-converting enzyme inhibitory peptides produced by *Bifidobacterium bifidum* MF 20/5. *Int. J. Food Microbiol.* **2013**, *167*, 131–137. <https://doi.org/10.1016/j.ijfoodmicro.2013.09.002>.
60. Li, Y.; Sadiq, F.A.; Liu, T.; Chen, J.; He, G. Purification and identification of novel peptides with inhibitory effect against angiotensin I-converting enzyme and optimization of process conditions in milk fermented with the yeast *Kluyveromyces marxianus*. *J. Funct. Foods* **2015**, *16*, 278–288.
61. Chen, L.; Zhang, Q.; Ji, Z.; Shu, G.; Chen, H. Production and fermentation characteristics of angiotensin-I-converting enzyme inhibitory peptides of goat milk fermented by a novel wild *Lactobacillus plantarum* 69. *LWT* **2018**, *91*, 532–540. <https://doi.org/10.1016/j.lwt.2018.02.002>.
62. Soleymanzadeh, N.; Mirdamadi, S.; Mirzaei, M.; Kianirad, M. Novel  $\beta$ -casein derived antioxidant and ACE-inhibitory active peptide from camel milk fermented by *Leuconostoc lactis* PTCC1899: Identification and molecular docking. *Int. Dairy J.* **2019**, *97*, 201–208.
63. Solanki, D.; Hati, S. Considering the potential of *Lactobacillus rhamnosus* for producing Angiotensin I-Converting Enzyme (ACE) inhibitory peptides in fermented camel milk (Indian breed). *Food Biosci.* **2018**, *23*, 16–22.
64. Rani, S.; Pooja, K.; Pal, G.K. Exploration of potential angiotensin converting enzyme inhibitory peptides generated from enzymatic hydrolysis of goat milk proteins. *Biocatal. Agric. Biotechnol.* **2017**, *11*, 83–88.
65. El Hatmi, H.; Jrad, Z.; Khorchani, T.; Jardin, J.; Poirson, C.; Perrin, C.; Cakir-Kiefer, C.; Girardet, J.-M. Identification of bioactive peptides derived from caseins, glycosylation-dependent cell adhesion molecule-1 (GlyCAM-1), and peptidoglycan recognition protein-1 (PGRP-1) in fermented camel milk. *Int. Dairy J.* **2016**, *56*, 159–168.
66. Mann, B.; Athira, S.; Sharma, R.; Bajaj, R. Bioactive Peptides in Yogurt. In *Yogurt in Health and Disease Prevention*; Elsevier: London, UK, 2017; pp. 411–426.
67. Buendia, J.R.; Li, Y.; Hu, F.B.; Cabral, H.J.; Bradlee, M.L.; Quatromoni, P.A.; Singer, M.R.; Curhan, G.C.; Moore, L.L. Regular Yogurt Intake and Risk of Cardiovascular Disease Among Hypertensive Adults. *Am. J. Hypertens.* **2018**, *31*, 557–565. <https://doi.org/10.1093/ajh/hpx220>.
68. Chabance, B.; Marteau, P.; Rambaud, J.C.; Migliore-Samour, D.; Boynard, M.; Perrotin, P.; Guillet, R.; Jollès, P.; Fiat, A.M. Casein peptide release and passage to the blood in humans during digestion of milk or yogurt. *Biochimie* **1998**, *80*, 155–165. [https://doi.org/10.1016/S0300-9084\(98\)80022-9](https://doi.org/10.1016/S0300-9084(98)80022-9).
69. Fitzgerald, R.J.; Murray, B.A. Bioactive peptides and lactic fermentations. *Int. J. Dairy Technol.* **2006**, *59*, 118–125. <https://doi.org/10.1111/j.1471-0307.2006.00250.x>.

70. Nguyen, H.T.H.; Gathercole, J.L.; Day, L.; Dalziel, J.E. Differences in peptide generation following in vitro gastrointestinal digestion of yogurt and milk from cow, sheep and goat. *Food Chem.* **2020**, *317*, 126419. <https://doi.org/10.1016/j.foodchem.2020.126419>.
71. Maes, W.; Van Camp, J.; Vermeirssen, V.; Hemeryck, M.; Ketelslegers, J.M.; Schrezenmeir, J.; Van Oostveldt, P.; Huyghebaert, A. Influence of the lactokinin Ala-Leu-Pro-Met-His-Ile-Arg (ALPMHIR) on the release of endothelin-1 by endothelial cells. *Regul. Pept.* **2004**, *118*, 105–109. <https://doi.org/10.1016/j.regpep.2003.11.005>.
72. Perpetuo, E.A.; Juliano, L.; Lebrun, I. Biochemical and Pharmacological Aspects of Two Bradykinin-Potentiating Peptides Obtained from Tryptic Hydrolysis of Casein. *J. Protein Chem.* **2003**, *22*, 601–606. <https://doi.org/10.1023/B:JOPC.0000008724.98339.ff>.
73. Nurminen, M.L.; Sipola, M.; Kaarto, H.; Pihlanto-Leppälä, A.; Piilola, K.; Korpela, R.; Tossavainen, O.; Korhonen, H.; Vapaatalo, H. Alpha-lactorphan lowers blood pressure measured by radiotelemetry in normotensive and spontaneously hypertensive rats. *Life Sci.* **2000**, *66*, 1535–1543. [https://doi.org/10.1016/s0024-3205\(00\)00471-9](https://doi.org/10.1016/s0024-3205(00)00471-9).
74. Hayes, M.; Stanton, C.; Fitzgerald, G.F.; Ross, R.P. Putting microbes to work: Dairy fermentation, cell factories and bioactive peptides. Part II: Bioactive peptide functions. *Biotechnol. J.* **2007**, *2*, 435–449. <https://doi.org/10.1002/biot.200700045>.
75. Giacometti Cavalheiro, F.; Parra Baptista, D.; Domingues Galli, B.; Negrão, F.; Nogueira Eberlin, M.; Lúcia Gigante, M. High protein yogurt with addition of *Lactobacillus helveticus*: Peptide profile and angiotensin-converting enzyme ACE-inhibitory activity. *Food Chem.* **2020**, *333*, 127482. <https://doi.org/10.1016/j.foodchem.2020.127482>.
76. Papadimitriou, C.G.; Vafopoulou-Mastrojiannaki, A.; Silva, S.V.; Gomes, A.-M.; Malcata, F.X.; Alichanidis, E. Identification of peptides in traditional and probiotic sheep milk yoghurt with angiotensin I-converting enzyme (ACE)-inhibitory activity. *Food Chem.* **2007**, *105*, 647–656. <https://doi.org/10.1016/j.foodchem.2007.04.028>.
77. Pina, A.S.; Roque, A.C. Studies on the molecular recognition between bioactive peptides and angiotensin-converting enzyme. *J. Mol. Recognit.* **2009**, *22*, 162–168. <https://doi.org/10.1002/jmr.905>.
78. Lebrun, I.; Lebrun, F.L.; Henriques, O.B.; Carmona, A.K.; Juliano, L.; Camargo, A.C. Isolation and characterization of a new bradykinin potentiating octapeptide from gamma-casein. *Can. J. Physiol. Pharmacol.* **1995**, *73*, 85–91. <https://doi.org/10.1139/y95-012>.
79. Robinson, R.C.; Nielsen, S.D.; Dallas, D.C.; Barile, D. Can cheese mites, maggots and molds enhance bioactivity? Peptidomic investigation of functional peptides in four traditional cheeses. *Food Funct.* **2021**, *12*, 633–645. <https://doi.org/10.1039/D0FO02439B>.
80. Sánchez-Rivera, L.; Martínez-Maqueda, D.; Cruz-Huerta, E.; Miralles, B.; Recio, I. Peptidomics for discovery, bioavailability and monitoring of dairy bioactive peptides. *Food Res. Int.* **2014**, *63*, 170–181. <https://doi.org/10.1016/j.foodres.2014.01.069>.
81. Gómez-Ruiz, J.Á.; Taborda, G.; Amigo, L.; Recio, I.; Ramos, M. Identification of ACE-inhibitory peptides in different Spanish cheeses by tandem mass spectrometry. *Eur. Food Res. Technol.* **2006**, *223*, 595–601. <https://doi.org/10.1007/s00217-005-0238-0>.
82. Gupta, A.; Mann, B.; Kumar, R.; Sangwan, R. Antioxidant activity of Cheddar cheeses at different stages of ripening. *Int. J. Dairy Technol.* **2009**, *62*, 339–347. <https://doi.org/10.1111/j.1471-0307.2009.00509.x>.
83. Iwaniak, A.; Mogut, D. Metabolic Syndrome-Preventive Peptides Derived from Milk Proteins and Their Presence in Cheeses: A Review. *Appl. Sci.* **2020**, *10*, 2772.
84. Summer, A.; Formaggioni, P.; Franceschi, P.; Di Frangia, F.; Righi, F.; Malacarne, M. Cheese as Functional Food: The Example of Parmigiano Reggiano and Grana Padano. *Food Technol. Biotechnol.* **2017**, *55*, 277–289. <https://doi.org/10.17113/ftb.55.03.17.5233>.
85. Bütikofer, U.; Meyer, J.; Sieber, R.; Wechsler, D. Quantification of the angiotensin-converting enzyme-inhibiting tripeptides Val-Pro-Pro and Ile-Pro-Pro in hard, semi-hard and soft cheeses. *Int. Dairy J.* **2007**, *17*, 968–975. <https://doi.org/10.1016/j.idairyj.2006.11.003>.
86. Pihlanto, A. Lactic Fermentation and Bioactive Peptides. In *Lactic Acid Bacteria—R & D for Food, Health and Livestock Purposes*; IntechOpen: London, UK, 2013; pp. 310–331.
87. McSweeney, P.L. Biochemistry of cheese ripening: Introduction and overview. In *Cheese*; Elsevier: London, UK, 2017; pp. 379–387.
88. Ardö, Y.; McSweeney, P.L.H.; Magboul, A.A.A.; Upadhyay, V.K.; Fox, P.F. Chapter 18—Biochemistry of Cheese Ripening: Proteolysis. In *Cheese*, 4th ed.; McSweeney, P.L.H., Fox, P.F., Cotter, P.D., Everett, D.W., Eds.; Academic Press: London, UK, 2017; pp. 445–482. <https://doi.org/10.1016/B978-0-12-417012-4.00018-1>.
89. Ong, L.; Shah, N.P. Release and identification of angiotensin-converting enzyme-inhibitory peptides as influenced by ripening temperatures and probiotic adjuncts in Cheddar cheeses. *LWT—Food Sci. Technol.* **2008**, *41*, 1555–1566. <https://doi.org/10.1016/j.lwt.2007.11.026>.
90. Sahingil, D.; Hayaloglu, A.A.; Kirmaci, H.A.; Özer, B.; Simsek, O. Changes of proteolysis and angiotensin-I converting enzyme-inhibitory activity in white-brined cheese as affected by adjunct culture and ripening temperature. *J. Dairy Res.* **2014**, *81*, 394–402. <https://doi.org/10.1017/S0022029914000326>.
91. Sánchez-Rivera, L.; Diezhandino, I.; Gómez-Ruiz, J.Á.; Fresno, J.M.; Miralles, B.; Recio, I. Peptidomic study of Spanish blue cheese (Valdeón) and changes after simulated gastrointestinal digestion. *Electrophoresis* **2014**, *35*, 1627–1636. <https://doi.org/10.1002/elps.201300510>.

92. Stuknyte, M.; Cattaneo, S.; Masotti, F.; De Noni, I. Occurrence and fate of ACE-inhibitor peptides in cheeses and in their digestates following in vitro static gastrointestinal digestion. *Food Chem.* **2015**, *168*, 27–33. <https://doi.org/10.1016/j.foodchem.2014.07.045>.
93. Basiricò, L.; Catalani, E.; Morera, P.; Cattaneo, S.; Stuknyte, M.; Bernabucci, U.; De Noni, I.; Nardone, A. Release of angiotensin converting enzyme-inhibitor peptides during in vitro gastrointestinal digestion of Parmigiano Reggiano PDO cheese and their absorption through an in vitro model of intestinal epithelium. *J. Dairy Sci.* **2015**, *98*, 7595–7601. <https://doi.org/10.3168/jds.2015-9801>.
94. Baptista, D.P.; Salgaço, M.K.; Sivieri, K.; Gigante, M.L. Use of static and dynamic in vitro models to simulate Prato cheese gastrointestinal digestion: Effect of *Lactobacillus helveticus* LH-B02 addition on peptides bioaccessibility. *LWT* **2020**, *134*, 110229. <https://doi.org/10.1016/j.lwt.2020.110229>.
95. Atanasova, J.; Dalgalarondo, M.; Iliev, I.; Moncheva, P.; Todorov, S.D.; Ivanova, I.V. Formation of Free Amino Acids and Bioactive Peptides During the Ripening of Bulgarian White Brined Cheeses. *Probiotics Antimicrob. Proteins* **2021**, *13*, 261–272. <https://doi.org/10.1007/s12602-020-09669-0>.
96. Iwaniak, A.; Mogut, D.; Minkiewicz, P.; Żulewska, J.; Darewicz, M. Gouda Cheese with Modified Content of  $\beta$ -Casein as a Source of Peptides with ACE- and DPP-IV-Inhibiting Bioactivity: A Study Based on In Silico and In Vitro Protocol. *Int. J. Mol. Sci.* **2021**, *22*, 2949. <https://doi.org/10.3390/ijms22062949>.
97. Guzel-Seydim, Z.B.; Kok-Tas, T.; Greene, A.K.; Seydim, A.C. Review: Functional properties of kefir. *Crit. Rev. Food Sci. Nutr.* **2011**, *51*, 261–268. <https://doi.org/10.1080/10408390903579029>.
98. Muir, D.; Tamime, A.; Wszolek, M. Comparison of the sensory profiles of kefir, buttermilk and yogurt. *Int. J. Dairy Technol.* **1999**, *52*, 129–134.
99. Simova, E.; Beshkova, D.; Angelov, A.; Hristozova, T.; Frengova, G.; Spasov, Z. Lactic acid bacteria and yeasts in kefir grains and kefir made from them. *J. Ind. Microbiol. Biotechnol.* **2002**, *28*, 1–6. <https://doi.org/10.1038/sj/jim/7000186>.
100. Şanlı, T.; Akal, H.C.; Yetişemiyen, A.; Hayaloglu, A.A. Influence of adjunct cultures on angiotensin-converting enzyme (ACE)-inhibitory activity, organic acid content and peptide profile of kefir. *Int. J. Dairy Technol.* **2018**, *71*, 131–139. <https://doi.org/10.1111/1471-0307.12346>.
101. López-Fandiño, R.; Otte, J.; van Camp, J. Physiological, chemical and technological aspects of milk-protein-derived peptides with antihypertensive and ACE-inhibitory activity. *Int. Dairy J.* **2006**, *16*, 1277–1293. <https://doi.org/10.1016/j.idairyj.2006.06.004>.
102. Nielsen, M.S.; Martinussen, T.; Flambard, B.; Sørensen, K.I.; Otte, J. Peptide profiles and angiotensin-I-converting enzyme inhibitory activity of fermented milk products: Effect of bacterial strain, fermentation pH, and storage time. *Int. Dairy J.* **2009**, *19*, 155–165. <https://doi.org/10.1016/j.idairyj.2008.10.003>.
103. Shu, G.; Ma, L.; Chen, L.; Guo, M.; Guo, Y.; Chen, H. Goat milk Kefir with ACE inhibitory activity: Preparation and storage stability evaluation. *J. Food Process. Preserv.* **2020**, *44*, e14417. <https://doi.org/10.1111/jfpp.14417>.
104. Amorim, F.G.; Coitinho, L.B.; Dias, A.T.; Friques, A.G.F.; Monteiro, B.L.; Rezende, L.C.D.; Pereira, T.M.C.; Campagnaro, B.P.; De Pauw, E.; Vasquez, E.C.; et al. Identification of new bioactive peptides from Kefir milk through proteopeptidomics: Bioprospection of antihypertensive molecules. *Food Chem.* **2019**, *282*, 109–119. <https://doi.org/10.1016/j.foodchem.2019.01.010>.
105. Zarei, M.; Forghani, B.; Ebrahimpour, A.; Abdul Hamid, A.; Anwar, F.; Saari, N. In vitro and in vivo antihypertensive activity of palm kernel cake protein hydrolysates: Sequencing and characterization of potent bioactive peptides. *Ind. Crop. Prod.* **2015**, *76*, 112–120.
106. Zou, P.; Wang, J.L.; He, G.Q.; Wu, J. Purification, identification, and in vivo activity of angiotensin I-converting enzyme inhibitory peptide, from ribbonfish (*Trichiurus haumela*) backbone. *J. Food Sci.* **2014**, *79*, C1–C7. <https://doi.org/10.1111/1750-3841.12269>.
107. Gleeson, J.P.; Brayden, D.J.; Ryan, S.M. Evaluation of PepT1 transport of food-derived antihypertensive peptides, Ile-Pro-Pro and Leu-Lys-Pro using in vitro, ex vivo and in vivo transport models. *Eur. J. Pharm. Biopharm.* **2017**, *115*, 276–284. <https://doi.org/10.1016/j.ejpb.2017.03.007>.
108. Koyama, D.; Sasai, M.; Matsumura, S.; Inoue, K.; Ohinata, K. A milk-derived pentapeptide reduces blood pressure in advanced hypertension in a CCK system-dependent manner. *Food Funct.* **2020**, *11*, 9489–9494. <https://doi.org/10.1039/D0FO01122C>.
109. Lee, N.-Y.; Cheng, J.-T.; Enomoto, T.; Nakamura, I. The antihypertensive activity of angiotensin-converting enzyme inhibitory peptide containing in bovine lactoferrin. *Chin. J. Physiol.* **2006**, *49*, 67–73.
110. Centeno, J.M.; Burguete, M.C.; Castelló-Ruiz, M.; Enrique, M.; Vallés, S.; Salom, J.B.; Torregrosa, G.; Marcos, J.F.; Alborch, E.; Manzanares, P. Lactoferricin-Related Peptides with Inhibitory Effects on ACE-Dependent Vasoconstriction. *J. Agric. Food Chem.* **2006**, *54*, 5323–5329. <https://doi.org/10.1021/jf060482j>.
111. Ruiz-Giménez, P.; Burguete, M.C.; Castelló-Ruiz, M.; Marcos, J.F.; Salom, J.B.; Vallés, S.; Torregrosa, G.; Alborch, E.; Manzanares, P. Bovine lactoferrin pepsin hydrolysate exerts inhibitory effect on angiotensin I-converting enzyme-dependent vasoconstriction. *Int. Dairy J.* **2007**, *17*, 1212–1215. <https://doi.org/10.1016/j.idairyj.2007.03.013>.
112. Ruiz-Giménez, P.; Ibáñez, A.; Salom, J.B.; Marcos, J.F.; López-Díez, J.J.; Vallés, S.; Torregrosa, G.; Alborch, E.; Manzanares, P. Antihypertensive Properties of Lactoferricin B-Derived Peptides. *J. Agric. Food Chem.* **2010**, *58*, 6721–6727. <https://doi.org/10.1021/jf100899u>.
113. Sánchez-Rivera, L.; Santos, P.F.; Miralles, B.; Carrón, R.; José Montero, M.; Recio, I. Peptide fragments from  $\beta$ -casein f(134–138), HLPLP, generated by the action of rat blood plasma peptidases show potent antihypertensive activity. *Food Res. Int.* **2016**, *88*, 348–353. <https://doi.org/10.1016/j.foodres.2015.12.007>.

114. Khedr, S.; Deussen, A.; Kopaliani, I.; Zatschler, B.; Martin, M. Effects of tryptophan-containing peptides on angiotensin-converting enzyme activity and vessel tone ex vivo and in vivo. *Eur. J. Nutr.* **2018**, *57*, 907–915. <https://doi.org/10.1007/s00394-016-1374-y>.
115. Xue, L.; Wang, X.; Hu, Z.; Wu, Z.; Wang, L.; Wang, H.; Yang, M. Identification and characterization of an angiotensin-converting enzyme inhibitory peptide derived from bovine casein. *Peptides* **2018**, *99*, 161–168. <https://doi.org/10.1016/j.peptides.2017.09.021>.
116. Ruiz-Giménez, P.; Salom, J.B.; Marcos, J.F.; Vallés, S.; Martínez-Maqueda, D.; Recio, I.; Torregrosa, G.; Alborch, E.; Manzanares, P. Antihypertensive effect of a bovine lactoferrin pepsin hydrolysate: Identification of novel active peptides. *Food Chem.* **2012**, *131*, 266–273. <https://doi.org/10.1016/j.foodchem.2011.08.076>.
117. Geerlings, A.; Villar, I.C.; Hidalgo Zarco, F.; Sánchez, M.; Vera, R.; Zafra Gomez, A.; Boza, J.; Duarte, J. Identification and Characterization of Novel Angiotensin-Converting Enzyme Inhibitors Obtained from Goat Milk. *J. Dairy Sci.* **2006**, *89*, 3326–3335. [https://doi.org/10.3168/jds.S0022-0302\(06\)72369-4](https://doi.org/10.3168/jds.S0022-0302(06)72369-4).
118. Clare, D.A.; Swaisgood, H.E. Bioactive Milk Peptides: A Prospectus. *J. Dairy Sci.* **2000**, *83*, 1187–1195. [https://doi.org/10.3168/jds.S0022-0302\(00\)74983-6](https://doi.org/10.3168/jds.S0022-0302(00)74983-6).
119. Rodríguez-Figueroa, J.C.; González-Córdova, A.F.; Torres-Llanez, M.J.; Garcia, H.S.; Vallejo-Cordoba, B. Novel angiotensin I-converting enzyme inhibitory peptides produced in fermented milk by specific wild *Lactococcus lactis* strains. *J. Dairy Sci.* **2012**, *95*, 5536–5543. <https://doi.org/10.3168/jds.2011-5186>.
120. Cushman, D.W.; Cheung, H.S.; Sabo, E.F.; Ondetti, M.A. Design of potent competitive inhibitors of angiotensin-converting enzyme. Carboxyalkanoyl and mercaptoalkanoyl amino acids. *Biochemistry* **1977**, *16*, 5484–5491. <https://doi.org/10.1021/bi00644a014>.
121. Rohrbach, M.S.; Williams, E.B.; Rolstad, R.A. Purification and substrate specificity of bovine angiotensin-converting enzyme. *J. Biol. Chem.* **1981**, *256*, 225–230. [https://doi.org/10.1016/S0021-9258\(19\)70123-9](https://doi.org/10.1016/S0021-9258(19)70123-9).
122. Gómez-Ruiz, J.Á.; Ramos, M.; Recio, I. Angiotensin-converting enzyme-inhibitory peptides in Manchego cheeses manufactured with different starter cultures. *Int. Dairy J.* **2002**, *12*, 697–706. [https://doi.org/10.1016/S0958-6946\(02\)00059-6](https://doi.org/10.1016/S0958-6946(02)00059-6).
123. Pan, D.; Guo, H.; Zhao, B.; Cao, J. The molecular mechanisms of interactions between bioactive peptides and angiotensin-converting enzyme. *Bioorg. Med. Chem. Lett.* **2011**, *21*, 3898–3904. <https://doi.org/10.1016/j.bmcl.2011.05.033>.
124. Abdelhedi, O.; Nasri, R.; Jridi, M.; Mora, L.; Oseguera-Toledo, M.E.; Aristoy, M.-C.; Amara, I.B.; Toldrá, F.; Nasri, M. In silico analysis and antihypertensive effect of ACE-inhibitory peptides from smooth-hound viscera protein hydrolysate: Enzyme-peptide interaction study using molecular docking simulation. *Process Biochem.* **2017**, *58*, 145–159. <https://doi.org/10.1016/j.procbio.2017.04.032>.
125. Nie, X.; Zhao, L.; Deng, S.; Su, W.; Zhang, Y. A review of molecular simulation applied in vapor-liquid equilibria (VLE) estimation of thermodynamic cycles. *J. Mol. Liq.* **2018**, *264*, 652–674. <https://doi.org/10.1016/j.molliq.2018.05.101>.
126. Tao, X.; Huang, Y.; Wang, C.; Chen, F.; Yang, L.; Ling, L.; Che, Z.; Chen, X. Recent developments in molecular docking technology applied in food science: A review. *Int. J. Food Sci. Technol.* **2020**, *55*, 33–45. <https://doi.org/10.1111/ijfs.14325>.
127. Fu, Y.; Young, J.F.; Løkke, M.M.; Lametsch, R.; Aluko, R.E.; Therkildsen, M. Revalorisation of bovine collagen as a potential precursor of angiotensin I-converting enzyme (ACE) inhibitory peptides based on in silico and in vitro protein digestions. *J. Funct. Foods* **2016**, *24*, 196–206. <https://doi.org/10.1016/j.jff.2016.03.026>.
128. Nongonierma, A.B.; FitzGerald, R.J. Learnings from quantitative structure–activity relationship (QSAR) studies with respect to food protein-derived bioactive peptides: A review. *RSC Adv.* **2016**, *6*, 75400–75413. <https://doi.org/10.1039/C6RA12738J>.
129. Sandberg, M.; Eriksson, L.; Jonsson, J.; Sjöström, M.; Wold, S. New Chemical Descriptors Relevant for the Design of Biologically Active Peptides. A Multivariate Characterization of 87 Amino Acids. *J. Med. Chem.* **1998**, *41*, 2481–2491. <https://doi.org/10.1021/jm9700575>.
130. Wu, J.; Aluko, R.E.; Nakai, S. Structural requirements of Angiotensin I-converting enzyme inhibitory peptides: Quantitative structure-activity relationship study of di- and tripeptides. *J. Agric. Food Chem.* **2006**, *54*, 732–738. <https://doi.org/10.1021/jf051263l>.
131. Jing, P.; Qian, B.; He, Y.; Zhao, X.; Zhang, J.; Zhao, D.; Lv, Y.; Deng, Y. Screening milk-derived antihypertensive peptides using quantitative structure activity relationship (QSAR) modelling and in vitro/in vivo studies on their bioactivity. *Int. Dairy J.* **2014**, *35*, 95–101. <https://doi.org/10.1016/j.idairyj.2013.10.009>.
132. Lin, K.; Zhang, L.W.; Han, X.; Xin, L.; Meng, Z.X.; Gong, P.M.; Cheng, D.Y. Yak milk casein as potential precursor of angiotensin I-converting enzyme inhibitory peptides based on in silico proteolysis. *Food Chem.* **2018**, *254*, 340–347. <https://doi.org/10.1016/j.foodchem.2018.02.051>.
133. Majumder, K.; Wu, J. A new approach for identification of novel antihypertensive peptides from egg proteins by QSAR and bioinformatics. *Food Res. Int.* **2010**, *43*, 1371–1378. <https://doi.org/10.1016/j.foodres.2010.04.027>.
134. Pripp, A.H.; Isaksson, T.; Stepaniak, L.; Sørhaug, T. Quantitative structure-activity relationship modelling of ACE-inhibitory peptides derived from milk proteins. *Eur. Food Res. Technol.* **2004**, *219*, 579–583. <https://doi.org/10.1007/s00217-004-1004-4>.
135. Sagardia, I.; Roa-Ureta, R.H.; Bald, C. A new QSAR model, for angiotensin I-converting enzyme inhibitory oligopeptides. *Food Chem.* **2013**, *136*, 1370–1376. <https://doi.org/10.1016/j.foodchem.2012.09.092>.
136. Tripaldi, P.; Pérez-González, A.; Rojas, C.; Radax, J.; Ballabio, D.; Todeschini, R. Classification-based QSAR Models for the Prediction of the Bioactivity of ACE-inhibitor Peptides. *Protein Pept. Lett.* **2018**, *25*, 1015–1023. <https://doi.org/10.2174/0929866525666181114145658>.

137. Vukic, V.R.; Vukic, D.V.; Milanovic, S.D.; Ilicic, M.D.; Kanuric, K.G.; Johnson, M.S. In silico identification of milk antihypertensive di- and tripeptides involved in angiotensin I-converting enzyme inhibitory activity. *Nutr. Res.* **2017**, *46*, 22–30. <https://doi.org/10.1016/j.nutres.2017.07.009>.
138. Wu, J.; Aluko, R.E.; Nakai, S. Structural Requirements of Angiotensin I-Converting Enzyme Inhibitory Peptides: Quantitative Structure-Activity Relationship Modeling of Peptides Containing 4–10 Amino Acid Residues. *QSAR Comb. Sci.* **2006**, *25*, 873–880. <https://doi.org/10.1002/qsar.200630005>.
139. Wu, J.; Liao, W.; Udenigwe, C.C. Revisiting the mechanisms of ACE inhibitory peptides from food proteins. *Trends Food Sci. Technol.* **2017**, *69*, 214–219. <https://doi.org/10.1016/j.tifs.2017.07.011>.
140. Udenigwe, C.C.; Li, H.; Aluko, R.E. Quantitative structure-activity relationship modeling of renin-inhibiting dipeptides. *Amino Acids* **2012**, *42*, 1379–1386. <https://doi.org/10.1007/s00726-011-0833-2>.
141. Wada, Y.; Lönnnerdal, B. Bioactive peptides derived from human milk proteins—mechanisms of action. *J. Nutr. Biochem.* **2014**, *25*, 503–514. <https://doi.org/10.1016/j.jnutbio.2013.10.012>.
142. Li, M.; Xia, S.; Zhang, Y.; Li, X. Optimization of ACE inhibitory peptides from black soybean by microwave-assisted enzymatic method and study on its stability. *LWT* **2018**, *98*, 358–365. <https://doi.org/10.1016/j.lwt.2018.08.045>.
143. Mirzapour-Kouhdasht, A.; Moosavi-Nasab, M.; Kim, Y.M.; Eun, J.B. Antioxidant mechanism, antibacterial activity, and functional characterization of peptide fractions obtained from barred mackerel gelatin with a focus on application in carbonated beverages. *Food Chem.* **2021**, *342*, 128339. <https://doi.org/10.1016/j.foodchem.2020.128339>.
144. Wang, B.; Xie, N.; Li, B. Influence of peptide characteristics on their stability, intestinal transport, and in vitro bioavailability: A review. *J. Food Biochem.* **2019**, *43*, e12571. <https://doi.org/10.1111/jfbc.12571>.
145. Mirzaei, M.; Mirdamadi, S.; Safavi, M.; Soleymanzadeh, N. The stability of antioxidant and ACE-inhibitory peptides as influenced by peptide sequences. *LWT* **2020**, *130*, 109710. <https://doi.org/10.1016/j.lwt.2020.109710>.
146. Xie, N.; Wang, B.; Jiang, L.; Liu, C.; Li, B. Hydrophobicity exerts different effects on bioavailability and stability of antioxidant peptide fractions from casein during simulated gastrointestinal digestion and Caco-2 cell absorption. *Food Res. Int.* **2015**, *76*, 518–526. <https://doi.org/10.1016/j.foodres.2015.06.025>.
147. Picariello, G.; Ferranti, P.; Fierro, O.; Mamone, G.; Caira, S.; Di Luccia, A.; Monica, S.; Addeo, F. Peptides surviving the simulated gastrointestinal digestion of milk proteins: Biological and toxicological implications. *J. Chromatography. B Anal. Technol. Biomed. Life Sci.* **2010**, *878*, 295–308. <https://doi.org/10.1016/j.jchromb.2009.11.033>.
148. Mohan, A.; Rajendran, S.R.C.K.; He, Q.S.; Bazinet, L.; Udenigwe, C.C. Encapsulation of food protein hydrolysates and peptides: A review. *RSC Adv.* **2015**, *5*, 79270–79278. <https://doi.org/10.1039/C5RA13419F>.
149. Perry, S.L.; McClements, D.J. Recent Advances in Encapsulation, Protection, and Oral Delivery of Bioactive Proteins and Peptides using Colloidal Systems. *Molecules* **2020**, *25*, 1161.
150. Zhang, T.; Su, M.; Jiang, X.; Xue, Y.; Zhang, J.; Zeng, X.; Wu, Z.; Guo, Y.; Pan, D. Transepithelial Transport Route and Liposome Encapsulation of Milk-Derived ACE-Inhibitory Peptide Arg-Leu-Ser-Phe-Asn-Pro. *J. Agric. Food Chem.* **2019**, *67*, 5544–5551. <https://doi.org/10.1021/acs.jafc.9b00397>.
151. Tordesillas, L.; Berin, M.C.; Sampson, H.A. Immunology of Food Allergy. *Immunity* **2017**, *47*, 32–50. <https://doi.org/10.1016/j.immuni.2017.07.004>.
152. Berni Canani, R.; Di Costanzo, M.; Bedogni, G.; Amoroso, A.; Cosenza, L.; Di Scala, C.; Granata, V.; Nocerino, R. Extensively hydrolyzed casein formula containing *Lactobacillus rhamnosus* GG reduces the occurrence of other allergic manifestations in children with cow's milk allergy: 3-year randomized controlled trial. *J. Allergy Clin. Immunol.* **2017**, *139*, 1906–1913.e1904. <https://doi.org/10.1016/j.jaci.2016.10.050>.
153. Cuadrado, C.; Cheng, H.; Sanchiz, A.; Ballesteros, I.; Easson, M.; Grimm, C.C.; Dieguez, M.C.; Linacero, R.; Burbano, C.; Maleki, S.J. Influence of enzymatic hydrolysis on the allergenic reactivity of processed cashew and pistachio. *Food Chem.* **2018**, *241*, 372–379. <https://doi.org/10.1016/j.foodchem.2017.08.120>.
154. Jiménez-Saiz, R.; Benedé, S.; Molina, E.; López-Expósito, I. Effect of processing technologies on the allergenicity of food products. *Crit. Rev. Food Sci. Nutr.* **2015**, *55*, 1902–1917. <https://doi.org/10.1080/10408398.2012.736435>.
155. Verhoeckx, K.C.M.; Vissers, Y.M.; Baumert, J.L.; Faludi, R.; Feys, M.; Flanagan, S.; Herouet-Guichenev, C.; Holzhauser, T.; Shimojo, R.; van der Bolt, N.; et al. Food processing and allergenicity. *Food Chem. Toxicol. Int. J. Publ. Br. Ind. Biol. Res. Assoc.* **2015**, *80*, 223–240. <https://doi.org/10.1016/j.fct.2015.03.005>.
156. Yang, A.; Long, C.; Xia, J.; Tong, P.; Cheng, Y.; Wang, Y.; Chen, H. Enzymatic characterisation of the immobilised Alcalase to hydrolyse egg white protein for potential allergenicity reduction. *J. Sci. Food Agric* **2017**, *97*, 199–206. <https://doi.org/10.1002/jsfa.7712>.
157. Golkar, A.; Milani, J.M.; Vasiljevic, T. Altering allergenicity of cow's milk by food processing for applications in infant formula. *Crit. Rev. Food Sci. Nutr.* **2019**, *59*, 159–172. <https://doi.org/10.1080/10408398.2017.1363156>.
158. Hill, D.J.; Cameron, D.J.; Francis, D.E.; Gonzalez-Andaya, A.M.; Hosking, C.S. Challenge confirmation of late-onset reactions to extensively hydrolyzed formulas in infants with multiple food protein intolerance. *J. Allergy Clin. Immunol.* **1995**, *96*, 386–394. [https://doi.org/10.1016/s0091-6749\(95\)70058-7](https://doi.org/10.1016/s0091-6749(95)70058-7).
159. Saylor, J.D.; Bahna, S.L. Anaphylaxis to casein hydrolysate formula. *J. Pediatrics* **1991**, *118*, 71–74. [https://doi.org/10.1016/s0022-3476\(05\)81848-7](https://doi.org/10.1016/s0022-3476(05)81848-7).
160. Dziuba, M.; Minkiewicz, P.; Dąbek, M. Peptides, specific proteolysis products, as molecular markers of allergenic proteins—in silico studies. *Acta Sci. Polonorum. Technol. Aliment.* **2013**, *12*, 101–112.

161. Reddi, S.; Kapila, R.; Dang, A.; Kapila, S. Evaluation of allergenic response of milk bioactive peptides using mouse mast cell. *Milchwissenschaft* **2012**, *67*, 2.
162. Brouwer, C.P.; Rahman, M.; Welling, M.M. Discovery and development of a synthetic peptide derived from lactoferrin for clinical use. *Peptides* **2011**, *32*, 1953–1963. <https://doi.org/10.1016/j.peptides.2011.07.017>.
163. Maeno, M.; Nakamura, Y.; Mennear, J.H.; Bernard, B.K. Studies of the Toxicological Potential of Tripeptides (L-Valyl-L-prolyl-L-proline and L-Isoleucyl-L-prolyl-L-proline): III. Single- and/or Repeated-Dose Toxicity of Tripeptides-Containing *Lactobacillus helveticus*-Fermented Milk Powder and Casein Hydrolysate in Rats. *Int. J. Toxicol.* **2005**, *24* (Suppl. 4), 13–23. <https://doi.org/10.1080/10915810500259556>.
164. Ponstein-Simarro Doorten, A.Y.; Vd Wiel, J.A.; Jonker, D. Safety evaluation of an IPP tripeptide-containing milk protein hydrolysate. *Food Chem. Toxicol. Int. J. Publ. Br. Ind. Biol. Res. Assoc.* **2009**, *47*, 55–61. <https://doi.org/10.1016/j.fct.2008.10.001>.
165. van der Velden, W.J.F.M.; van Iersel, T.M.P.; Blijlevens, N.M.A.; Donnelly, J.P. Safety and tolerability of the antimicrobial peptide human lactoferrin 1-11 (hLF1-11). *BMC Med.* **2009**, *7*, 44. <https://doi.org/10.1186/1741-7015-7-44>.
166. Hartmann, R.; Wal, J.M.; Bernard, H.; Pentzien, A.K. Cytotoxic and allergenic potential of bioactive proteins and peptides. *Curr. Pharm. Des.* **2007**, *13*, 897–920. <https://doi.org/10.2174/138161207780414232>.
167. Gleeson, J.P.; Heade, J.; Ryan, S.M.; Brayden, D.J. Stability, toxicity and intestinal permeation enhancement of two food-derived antihypertensive tripeptides, Ile-Pro-Pro and Leu-Lys-Pro. *Peptides* **2015**, *71*, 1–7. <https://doi.org/10.1016/j.peptides.2015.05.009>.
168. Gatehouse, D. Bacterial mutagenicity assays: Test methods. *Methods Mol. Biol.* **2012**, *817*, 21–34. [https://doi.org/10.1007/978-1-61779-421-6\\_2](https://doi.org/10.1007/978-1-61779-421-6_2).
169. Bernard, B.K.; Nakamura, Y.; Aihara, K.; Mennear, J.H. Studies of the toxicological potential of tripeptides (L-valyl-L-prolyl-L-proline and L-isoleucyl-L-prolyl-L-proline): IX. Evaluation of the mutagenic potential of synthesized L-valyl-L-prolyl-L-proline in the *Salmonella*-*Escherichia coli*/microsome, incorporation assay. *Int. J. Toxicol.* **2005**, *24* (Suppl. 4), 107–113. <https://doi.org/10.1080/10915810500259689>.
170. Aguilar-Toalá, J.E.; Santiago-López, L.; Peres, C.M.; Peres, C.; Garcia, H.S.; Vallejo-Cordoba, B.; González-Córdova, A.F.; Hernández-Mendoza, A. Assessment of multifunctional activity of bioactive peptides derived from fermented milk by specific *Lactobacillus plantarum* strains. *J. Dairy Sci.* **2017**, *100*, 65–75. <https://doi.org/10.3168/jds.2016-11846>.
171. Halavach, T.M.; Dudchik, N.V.; Tarun, E.I.; Zhygankov, V.G.; Kurchenko, V.P.; Romanovich, R.V.; Khartitonov, V.D.; Asafov, V.A. Biologically Active Properties of Hydrolysed and Fermented Milk Proteins. 2020. Available online: <https://elib.belstu.by/handle/123456789/40195> (accessed on 21 April 2022).
172. Hussein, F.A.; Chay, S.Y.; Ghanisma, S.B.M.; Zarei, M.; Auwal, S.M.; Hamid, A.A.; Ibadullah, W.Z.W.; Saari, N. Toxicity study and blood pressure-lowering efficacy of whey protein concentrate hydrolysate in rat models, plus peptide characterization. *J. Dairy Sci.* **2020**, *103*, 2053–2064. <https://doi.org/10.3168/jds.2019-17462>.
173. Nakamura, Y.; Bando, I.; Mennear, J.H.; Bernard, B.K. Studies of the toxicological potential of tripeptides (L-valyl-L-prolyl-L-proline and L-isoleucyl-L-prolyl-L-proline): IV. Assessment of the repeated-dose toxicological potential of synthesized L-valyl-L-prolyl-L-proline in male and female rats and dogs. *Int. J. Toxicol.* **2005**, *24* (Suppl. 4), 25–39. <https://doi.org/10.1080/10915810500259580>.
174. European Union. Regulation (EC) No 258/97 of the European Parliament and of the Council of 27 January 1997 concerning novel foods and novel food ingredients. *Off. J. Eur. Union* **1997**, *43*, 1–6.
175. Chalamaiah, M.; Keskin Ulug, S.; Hong, H.; Wu, J. Regulatory requirements of bioactive peptides (protein hydrolysates) from food proteins. *J. Funct. Foods* **2019**, *58*, 123–129. <https://doi.org/10.1016/j.jff.2019.04.050>.
176. Vargas-Bello-Pérez, E.; Márquez-Hernández, R.I.; Hernández-Castellano, L.E. Bioactive peptides from milk: Animal determinants and their implications in human health. *J. Dairy Res.* **2019**, *86*, 136–144. <https://doi.org/10.1017/s0022029919000384>.
177. Lammi, C.; Bollati, C.; Aiello, G.; Arnoldi, A. Chapter 22—Application in Nutrition: Cholesterol-Lowering Activity. In *Biologically Active Peptides*; Toldrá, F., Wu, J., Eds.; Academic Press: London, UK, 2021; pp. 551–568. <https://doi.org/10.1016/B978-0-12-821389-6.00017-0>.
178. Sirtori, C.R. From hypertension to hyperlipidaemia: The nutraceutical properties of egg proteins. *Int. J. Nutraceuticals Funct. Foods Nov. Foods* **2021**, *15*, 85–91. <https://doi.org/10.17470/NF-016-1042-2>.
179. Chasanah, E.; Susilowati, R.; Yuwono, P.; Zilda, D.S.; Fawzya, Y.N. Amino acid profile of biologically processed fish protein hydrolysate (FPH) using local enzyme to combat stunting. *IOP Conf. Ser. Earth Environ. Sci.* **2019**, *278*, 012013. <https://doi.org/10.1088/1755-1315/278/1/012013>.
180. European Union. Regulation (EC) No 1924/2006 of the European Parliament and of the Council of 20 December 2006 on nutrition and health claims made on foods. *Off. J. Eur. Union* **2007**, *12*, 3–18.
181. EFSA Panel on Dietetic Products, Nutrition and Allergies. General scientific guidance for stakeholders on health claim applications. *EFSA J.* **2016**, *14*, 4367. <https://doi.org/10.2903/j.efsa.2016.4367>.
182. EFSA Panel on Dietetic Products, Nutrition and Allergies. Scientific Opinion on the substantiation of health claims related to bonito protein peptide and maintenance of normal blood pressure (ID 1716) pursuant to Article 13(1) of Regulation (EC) No 1924/2006. *EFSA J.* **2010**, *8*, 1730. <https://doi.org/10.2903/j.efsa.2010.1730>.
183. FDA. Available online: <https://www.fda.gov/food/food-labeling-nutrition> (accessed on 21 April 2022).
184. Hartmann, R.; Meisel, H. Food-derived peptides with biological activity: From research to food applications. *Curr. Opin. Biotechnol.* **2007**, *18*, 163–169. <https://doi.org/10.1016/j.copbio.2007.01.013>.
185. Available online: <https://www.mhlw.go.jp/english/topics/foodsafety/fhc/02.html> (accessed on 22 April 2022).

- 
186. Sánchez, A.; Vázquez, A. Bioactive peptides: A review. *Food Qual. Saf.* **2017**, *1*, 29–46. <https://doi.org/10.1093/fqsafe/fyx006>.