



| | |
|-------------------------------------|--|
| Title | Conceptual System Dynamics and Agent-Based Modelling Simulation of Interorganisational Fairness in Food Value Chains: Research Agenda and Case Studies |
| Authors(s) | McGarraghy, Sean, Olafsdottir, Gudrun, Kazakov, Rossen, et al. |
| Publication date | 2022-02-16 |
| Publication information | McGarraghy, Sean, Gudrun Olafsdottir, Rossen Kazakov, and et al. "Conceptual System Dynamics and Agent-Based Modelling Simulation of Interorganisational Fairness in Food Value Chains: Research Agenda and Case Studies." MDPI, February 16, 2022. https://doi.org/10.3390/agriculture12020280 . |
| Publisher | MDPI |
| Item record/more information | http://hdl.handle.net/10197/12797 |
| Publisher's version (DOI) | 10.3390/agriculture12020280 |

Downloaded 2026-05-02 00:26:47

The UCD community has made this article openly available. Please share how this access benefits you. Your story matters! (@ucd_oa)



© Some rights reserved. For more information

Article

Conceptual System Dynamics and Agent-Based Modelling Simulation of Interorganisational Fairness in Food Value Chains: Research Agenda and Case Studies

Seán McGarraghy ^{1,*}, Gudrun Olafsdottir ², Rossen Kazakov ², Élise Huber ³, William Loveluck ³, Ingunn Y. Gudbrandsdottir ², Lukáš Čechura ⁴, Gianandrea Esposito ⁵, Antonella Samoggia ⁶, Pierre-Marie Aubert ³, David Barling ⁷, Ivan Đurić ⁸, Tinoush J. Jaghdani ⁸, Maitri Thakur ⁹, Nína M. Saviolidis ² and Sigurdur G. Bogason ²

- ¹ School of Business, University College Dublin, D04 V1W8, Ireland
 - ² Faculty of Industrial Engineering, Mechanical Engineering and Computer Science, University of Iceland, Dunhagi 5, 107 Reykjavik, Iceland; go@hi.is (G.O.); rkaz@hi.is (R.K.); iyg1@hi.is (I.Y.G.); ninamaria@hi.is (N.M.S.); sigboga@hi.is (S.G.B.)
 - ³ Institute for Sustainable Development and International Relations (IDDRI), 41 rue du Four, 75007 Paris, France; elise.huber@iddri.org (É.H.); w.loveluck@gmail.com (W.L.); pierremarie.aubert@iddri.org (P.-M.A.)
 - ⁴ Department of Economics, Faculty of Economics and Management of the Czech University of Life Sciences Prague, Kamýcká 129, 16500 Prague, Czech Republic; cechura@pef.czu.cz
 - ⁵ ART:ER – Attractiveness Research Territory, Via P. Gobetti, 101, 40129 Bologna, Italy; gianandrea.esposito@art-er.it
 - ⁶ Department of Agriculture and Food Science, Alma Mater Studiorum – Università di Bologna (UNIBO), Viale Fanin 50, 40125 Bologna, Italy; antonella.samoggia@unibo.it
 - ⁷ Centre for Agriculture, Food and Environmental Management Research, University of Hertfordshire, College Lane, Hatfield AL10 9AB, Herts, UK; d.barling@herts.ac.uk
 - ⁸ Leibniz Institute for Agricultural Development in Transition Economies (IAMO), 06120 Halle, Germany; duric@iamo.de (I.Đ.); jaghdani@iamo.de (T.J.J.)
 - ⁹ SINTEF Ocean, Postboks 4762, Torgard, N-7465 Trondheim, Norway; maitri.thakur@sintef.no
- * Correspondence: sean.mcgarraghy@ucd.ie

Citation: McGarraghy, S.; Olafsdottir, G.; Kazakov, R.; Huber, É.; Loveluck, W.; Gudbrandsdottir, I.Y.; Čechura, L.; Esposito, G.; Samoggia, A.; Aubert, P.-M.; et al. Conceptual System Dynamics and Agent-Based Modelling Simulation of Interorganisational Fairness in Food Value Chains: Research Agenda and Case Studies. *Agriculture* **2022**, *12*, x. <https://doi.org/10.3390/xxxxx>

Academic Editor(s):

Received: date

Accepted: date

Published: date

Publisher's Note: MDPI stays neutral with regard to jurisdictional claims in published maps and institutional affiliations.



Copyright: © 2022 by the authors. Submitted for possible open access publication under the terms and conditions of the Creative Commons Attribution (CC BY) license (<https://creativecommons.org/licenses/by/4.0/>).

Abstract: System dynamics and agent-based simulation modelling approaches have a potential as tools to evaluate the impact of policy related decision making in food value chains. The context is that a food value chain involves flows of multiple products, financial flows and decision making among the food value chain players. Each decision may be viewed from the level of independent actors, each with their own motivations and agenda, but responding to externalities and to the behaviours of other actors. The focus is to show how simulation modelling can be applied to problems such as fairness and power asymmetries in European food value chains by evaluating the outcome of interventions in terms of relevant operational indicators of interorganisational fairness (e.g., profit distribution, market power, bargaining power). The main concepts of system dynamics and agent-based modelling are introduced and the applicability of a hybrid of these methods to food value chains is justified. This approach is outlined as a research agenda, and it is demonstrated how cognitive maps can help in the initial conceptual model building when implemented for specific food value chains studied in the EU Horizon 2020 VALUMICS project. The French wheat to bread chain has many characteristics of food value chains in general and is applied as an example to formulate a model that can be extended to capture the functioning of European FVCs. This work is to be further progressed in a subsequent stream of research for the other food value chain case studies with different governance modes and market organisation, in particular, farmed salmon to fillet, dairy cows to milk and raw tomato to processed tomato.

Keywords: food value chain; system dynamics; agent-based modelling; hybrid method; governance; interorganisational fairness

1. Introduction

A food system constitutes a series of actors performing activities and making decisions involved in bringing products from primary production, through processing and distribution to the final consumer [1]. It is generally acknowledged that industrialised food systems are neither sustainable nor resilient and a major transformation is needed [2,3]. Pressures to address and implement measures within Food Value Chains (FVCs) to increase the sustainability of food systems have been mounting in recent years [4,5]. The European Green Deal [6] and, in particular, the Farm to Fork strategy have been instrumental drivers of change for FVCs and have placed emphasis on sustainability and resilience as key priorities to address for European food systems [7].

Food system transformation highly depends on the collaboration and cooperation of FVC actors which is where the issue of fairness plays an important role since actors are less likely to collaborate and coordinate activities when they perceive themselves to be impacted by unfair trading practices (UTPs) [8]. Earlier findings have indicated that the negative impact of unfair trading practices on small and medium size enterprises (SMEs) in the EU food sector is affecting the competitiveness of the industry [9]. Another topic of concern is the effect of EU competition law on collaborative practices which has been identified to be a barrier to collaborative sustainability initiatives in food value chains [10].

The problem of interorganisational fairness in FVCs is associated with power asymmetries and fair value distribution among actors. In general, profit in a market driven system is a prerequisite for the continued operation of businesses and the price is one of the most important factors that will increase the fairness perceptions of FVC actors [11]. However, the short-term vision to generate profit may have detrimental impact on supply chain relations if power asymmetries in the supply chain undermine the operational profitability of smaller agents in the chain [11,12]. Bargaining power in interorganisational relationships is a consequence of both the relative strategic significance of the partners (i.e., size of supplier or buyer) and the availability of alternatives (i.e., number of available suppliers/buyers and ease of switching supplier/buyer) [13,14]. Bargaining power is considered relevant to capture the behaviour of complex modern food value chains which are characterised by strategic coordination and horizontal concentration in retail and food manufacturing [15,16].

The organisation of food value chains as part of the overall food system entails various governance forms and structural characteristics. Strategic coordination through mergers and acquisitions in food manufacturing and retail and the formation of horizontal alliances has shifted the balance of power in food value chains [12,15,17,18]. The resulting weak position of farmers, in particular agricultural producers, has been of concern as they may be placed under pressure and have limited bargaining power in negotiations with larger buyers such as food manufactures and retail [19–21]. In response to this concern, the EU Directive (2019/633) on unfair trading practices (UTP) aims at protecting weaker suppliers, primarily farmers, including their organisations (e.g., cooperatives) against their buyers, as well as suppliers of agri-food products which are further downstream [22].

In an effort to assess the influence of policy measures to enhance fairness in FVCs, simulation modelling is of interest. Fairness is a complex issue and often defined along two main dimensions as distributive fairness and procedural fairness. Procedural fairness concerns the procedures leading to outcomes. The outcomes can be perceived as fair or unfair (i.e., distributive fairness) but the procedures leading to these outcomes can themselves also be considered fair or unfair (i.e., procedural fairness). The procedures in place certainly affect outcomes, although a high level of procedural fairness does not automatically lead to high levels of distributive fairness. Stakeholders' views on fairness are focused on price setting and how pricing decisions are made. The perception of fairness is often subjective and highly influenced by where in the supply chain the actors are embedded [8,23]. Various factors can influence the outcome, such as different firm strategies related to, e.g., transaction costs, capacities, collaboration, entry barriers or equal power

among partners to define prices, access to relevant information and the treatment of different partners in a supply chain on behalf of a powerful party [11,12]. Furthermore, the link between supplier fairness and relationship quality has been emphasised; and supplier dependence is another important factor that can affect the trust between suppliers and retailers [24]. The uncertainty of prices linked to the volatility of commodity prices and various requirements set by the more powerful actor in buyer and supplier relations, including sustainability criteria, needs to be considered when assessing the outcome of price negotiations and distributive fairness.

With a focus on interfirm relations and modelling interorganisational fairness, quantitative indicators must take into account bargaining power and the importance of price for FVC agents, in their effort to maximise their profit or utility. Social concepts more qualitative in nature are excluded from the scope of this study. This paper builds on the conceptualisation and operationalisation of interorganisational fairness in [25] where indicators for use in a quantitative model were proposed, e.g., profit margin as an indicator of distributive fairness and indicators for procedural fairness related to market power and bargaining power [25]. The product flows can be simulated using system dynamics (SD) which is well suited for modelling such flows [26–28]. The decisions controlling the product flow and pricing, which are the principal part of the model, can be modelled using agent-based modelling (ABM). The main advantage of ABM is its ability to model social interactions and so it can aid the study of subjects such as cooperation, competition, and collaboration in supply chains [29]. The aim is not to determine an absolute measure of fairness using these indicators, but rather to ascertain transitions towards fairer outcomes. This approach is in keeping with the European Parliament's depiction, which, rather than providing a strict value measure of UTPs, emphasises the presence of gross deviations away from good commercial conduct.

There seems to be a shortage in the literature of research that considers hybrid system dynamics & agent-based models of the whole food supply chain, from producers to consumers, thereby incorporating the full extent of interaction and feedback within the chain; one contribution of this paper is to address this gap in the literature.

The main research question to be addressed here is: "Can simulation of food value chains be used to assess: (a) the effect of strategic interventions on power structure; and (b) the impact on price negotiations between actors in food value chains; where distributive fairness is assessed by profit margin received by value chain actors and power structure is assessed by a proxy for market power and bargaining power?"

Hence, the objective of this paper is threefold:

- To set an agenda for research into simulation models of FVCs which hybridise system dynamics (SD) and agent-based modelling (ABM) methods, and to communicate the benefits of this approach to an audience of experts in agriculture and FVCs.
- To present how interorganisational fairness is related to governance and power asymmetries and thus identify potential sources of unfair marketing condition. This characterises the "real world problem" to be addressed by the simulation model.
- To select the most important elements of the real-world problem using methods such as cognitive maps and so derive a conceptual model to address the interorganisational fairness problem.

The structure of the rest of this paper is as follows. Section 2 introduces the main concepts of SD and ABM, and the use of a hybrid model is proposed and argued for the applicability to FVCs. Section 3 provides the background of the study including an overview of the food system structure and aspects of the fairness problem and governance in FVC case studies. In Section 4 the methodologies applied for the conceptualisation of the model are detailed. The results in Section 5 present an outline on how this approach is conceptualised for a particular FVC case study by use of cognitive maps for the wheat to bread chain and we show at a high level how a conceptual hybrid of SD and ABM can

model FVCs and the problem of fairness. Section 6 is discussion and Section 7 gives conclusions.

2. Simulation Modelling Background

For any business operating in a dynamic environment, such as agri-food businesses, optimisation and exact solution techniques cannot give a full and realistic picture of the business for a number of reasons, not least the underlying variability and complexity of the environment [30]. In such complex applications, simulation approaches can give an understanding of how factors such as labour variability, shortages or obsolescence of materials, etc. can affect overall performance [30]. Such simulation models are extensively used in the literature [31–33] and specifically in the agri-food domain [29]. Analytical closed-form solutions for multitier supply and value chains exist only in very simple cases, e.g., a two-tier supply chain; in other cases, the only practical approach to modelling is to simulate supply and value chains and so analyse the flow of money, information and material through the chain. There are several simulation approaches [33], including system dynamics, agent-based modelling and discrete-event simulation. In this section, we give an overview of the main simulation modelling approaches extant and the reasoning for our choice of a hybrid approach involving system dynamics and agent-based modelling: namely, that distributive and procedural interorganisational fairness can be captured by the flows of money and information (distributive) and the relations between interacting agents (procedural).

The endogenous and exogenous characteristics of organisational and market complexity are a source of causal ambiguity, emergent behaviour and self-organisational dynamics [34]; understanding of these is enhanced by general systems theory [35,36] and the system dynamics field of research [27,28,37–39]. System dynamics (SD) is an approach to understanding the nonlinear behaviour of complex systems over time using stocks, flows, internal feedback loops, functions and time delays. It is a mathematical modelling technique and methodology to frame, understand, and discuss complex issues and problems. Its basis is the recognition that the structure of a system—the many circular, interacting, sometimes time-delayed relationships among its components—can be just as important in determining its behaviour as the individual components themselves. There have been some applications in agriculture, e.g., [40] and food supply chains using system dynamics [41–44]. However, earlier studies rarely included the flow of money through the system; and, even when included its impact on decision making and the dynamics of the system were usually neglected. Financial factors greatly impact on decision making and therefore the physical flow of products and services; hence, our focus on value chains.

A more contemporary method for exploring complex adaptive systems is agent-based modelling and simulation (ABM or ABS) which, in contrast to the system dynamics top-down “macroscopic” perspective, takes a bottom-up “microscopic” view for explaining agent-specific emergent system behaviour (Figure 1). ABM has several features that make it an appropriate approach for modelling complex characteristics of value chains such as actor behaviours and interactions [45,46]. An *agent* is a model of a real-world actor. Agents in such systems act in parallel within an environment, interacting and competing for control over resources in an adaptive manner, subject to a condition/action rule pattern connected to a specific behavioural decision-making structure [47–50]. Agents may be intelligent, e.g., using ordering rules evolved by learning algorithms [51]. The *environment* represents all real-world factors not represented by agents. Agent-based simulation models are typically built from the bottom up by identifying agents in the system and defining their behaviours, including how they interact with other agents and their environment. The behaviour of the system as a whole emerges out of multiple concurrent individual agent behaviours. Each agent is: *self-contained* (an identifiable, discrete individual with a set of characteristics or attributes, behaviours, and decision-making capability [49]); *autonomous* (controls its internal state and its own behaviour); *situated* (in the environment); and *social* (interact with other agents). Agents have:

- attributes such as capacity, number of employees, production level;
- behaviours: the agent senses the environment, decides and acts (within constraints); responds to actions of other agents, regulations, flows of goods, money, information;
- goals that drive its behaviour (maybe to optimise, maybe to satisfy requirements);
- memory and the ability to learn and/or adapt based on experience;
- (possibly) resources or stocks.

Agent-based modelling, compared to traditional approaches to modelling economic systems, can be a more viable approach when there are reasons to think in terms of agents; for example, when the problem or research question to be explored is naturally represented by a large number of actors whose decisions and behaviours can be well-defined, which adapt and change, which learn, which engage in dynamic strategic interactions and relationships with other actors, and which can have spatial or temporal components to their behaviours and interactions [52]. An ABM can capture the structure of a system which has endogenously emerging mechanisms affecting its future evolution. In the food value chain context, an agent could be a consumer, retailer, producer or indeed any chain actor: these are independent actors, each with its own motivations and agenda, but each influenced by the environment.

Discrete event simulation (DES) is a methodology for modelling the behaviour of a complex real-world system comprising a number of separate processes where stochastic variability is an important consideration. A DES models the real system as discrete entities (individual items, e.g., a FVC order) which move through a network of queues (places where entities wait for processing) and activities (processing of entities, e.g., food processing or packing). Thus, each process consists of a discrete time-ordered sequence of events (discrete changes in system state) considered important by the modeller, and each event occurs at a particular time (timestamp); for example, if modelling a bakery, the events studied could be baking and packing events. Time moves forward in discrete steps (the moments at which events occur), and in a general DES, not all time steps need have the same duration. Standard applications of DES include modelling of manufacturing systems and queuing systems with stochastic aspects. As this paper does not consider queuing in the system, but only uses a single system clock, the model developed has only minor elements of a DES; however, this description is included for completeness. For further details, see [33] and the references therein. Hybrid simulation comprising ABM to capture the autonomous and interacting decision making behaviour of the supply chain actors, together with DES, has been used to model the production processes within a food value chain [53]. Figure 1 illustrates the relative levels of abstraction of SD, DES and ABS.

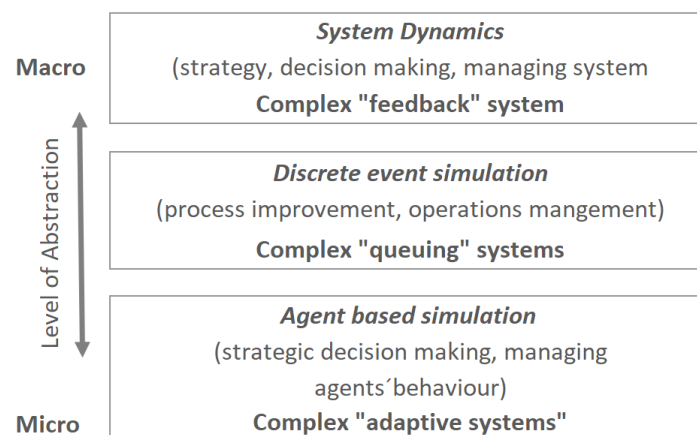


Figure 1. Level of abstraction of different simulation approaches.

In the process of developing a simulation model to capture behaviour of actors in a food system, a crucial stage is the initial conceptualisation. This involves analysis of the underlying feedback structure of the system to formulate hypotheses about the system's dynamic behaviour. A system dynamics modelling approach is useful for studying changes over time in complex supply systems with the aim of building both the understanding of complexity needed to find effective policies, and the confidence to use that understanding to take action [28].

A food supply system can be viewed as integrated downstream physical flows, upstream financial flows and decision chains that link these flows. Central to this idea is that supply systems are driven by profit and regulated by market dynamics [54]. Using this approach, the qualitative conceptual VALUMICS model of the macroscopic structure of a generic food system was initially presented as a simplified causal loop diagram (CLD) based on supply, demand, and price. Each step in the supply chain (e.g., farming, processing, and retail) was captured as a part of a food supply chain feedback structure describing the relationship between a supplier and a customer: it is natural to model these as agents. Therefore, the chain of agents, each aiming at maximising profit and minimising cost, is in aggregate a reinforcing supply system. Studying the structure and dynamics of food chain systems in VALUMICS as integrated supply-, value- and decision chains underscores the complexity of such systems [54]. Additionally, to use a model of a supply system to foresee policy implications, it is useful to consider not only the physical flow of products in the system but also the associated flow of funds and the effect it has on decision making. The dynamics of the systems being studied, with continuous and discrete elements, as well as the heterogeneity of the actors within them, motivates us to investigate a hybrid simulation methodology that can capture both system flows and actor behaviours in food value chains. The product flows can be simulated using SD, which is well suited for modelling such flows. The decisions controlling the product flow and pricing, which are the principal part of the model, were modelled using ABM. Since time passes in discrete steps, the model is also a DES. Hybrid models are of growing importance in operational research [33] but seem to be less commonly used in the agri-food context, though there has been some recent work on short supply chains [55].

A major aim of the VALUMICS project was to develop an integrated hybrid SD/ABM quantitative simulation model for use by policy makers and other stakeholders, and so contribute both academically and practically. The model developed is regarded as a laboratory for experiments and simulations to explore if and how regulatory interventions and changes in individual actor behaviour may drive overall system behaviour. It focuses on fairness issues, especially unfair trading practices in food value chains, and underpins other VALUMICS work on scenario development with a broader remit (e.g., resilience, sustainability, and integrity in general). The food systems studied comprise a large and complex system as discussed in Section 3: these can only be interpreted from a limited viewpoint both because of the modellers' need to select and simplify, and the lack of availability of complete and exhaustive information on the system: thus, many simplifications and assumptions are needed.

This paper derives a conceptual model giving a functional specification: what the hybrid simulation model will do. It highlights the main relevant decisions of each market actor in each FVC, and their explanations based on procedural and other aspects, including conditional factors and what-if questions. The conceptual modelling is addressed using qualitative techniques such as cognitive maps, agent interaction and agent behaviour rule maps. These also aid the modeller in reframing the main research question in terms of the model, exploring the model boundary, and generating dynamic hypotheses for simulation testing. The description of this conceptualisation stage is exemplified only by the French wheat to bread case study, which is the focus of the modelling work presented in this paper. Other case studies investigated are presented in the following section to provide an overview of real-world issues concerning fairness in FVCs.

All modelling approaches assume certain properties of the real-world situation being modelled, that is, represent it in a simplified way for reasons of economy of description, mathematical tractability or computational cost). The hybrid SD/ABM approach can capture flows of money, materiel and information in the FVC (SD) and choices/decisions/actions of individual actors based on what they see around them (ABM). The level of detail of the model constrains what can be studied and so what questions can be addressed. Computational cost considerations and available hardware constrain the number of agents modelled to a fraction of the number of real-world actors (though careful adherence to real-world proportions may mitigate this provided the numbers of agents can give statistically significant conclusions). Furthermore, we as modellers select for inclusion in the model what we regard as important; and we may potentially exclude important aspects of the real world from the model. In this case, the agent attributes and behaviours chosen are those relevant to interorganisational fairness as measured by our chosen metrics; attributes and behaviours not connected to this (e.g., to do with cultural aspects or sustainability) have not been captured and so questions involving those attributes and behaviours cannot be answered by this paper's approach. For example, such important real-world concepts as community resilience, long-term sustainability, and cultural diversity have been excluded from the scope of the model. The attributes and behaviours could also be extended to address other questions, which would make the model more complex and indeed cumbersome, if not computationally intractable. By the same token, other simpler approaches (e.g., a pure SD model with no modelling of actors as agents) could address some questions—if to a lesser extent of richness—at a lower computational cost.

All models are simplifications but can be useful when populated with reliable data. Conversely, data gaps can limit the quality of a model. Lack of data turned out to be a major limiting factor in the later building of this model, and high-impact assumptions needed to be made when data gaps were encountered, especially concerning firm level data and particularly for non-farmer actors. Secondary data from different European level data, national level data and regional level data was available on e.g., Eurostat, FAOSTAT, Euromonitor databases and national databases, while FADN and Amadeus databases were used for micro data respectively at farm and company level:

- Secondary data from different databases have different structures caused by divergent product classifications, time periods covered, commodity aggregations, and geographical reach. At the farm level the FADN data was detailed and possible to reconstruct to meet the modelling and analysis needs. However, at the processing industry level, the data available does not provide physical volumes passing through the processing industries; thus, it is difficult to link biophysical flows and socio-economic outcomes.
- Other limitations constraining the research and development of the model were the facts that data is aggregated at the national level and that no data is available regarding the share of differentiated vs. commodified/standardised production.
- Data is available at the firm level for specific firms; however, it is often incomplete (e.g., few data on business expenses) and big firms are often over-represented in the sample.
- Another factor causing difficulties is that firms are classified based on their sector of activity. For firms operating in more than one sector, all data values are assigned to the dominant sector. Also, some of the food processing is also realised by retailers (e.g., cutting and packing meat) so it is difficult to separate their main business from the processing activities.

3. Food System Background—Case Studies

In a conceptual modelling exercise, it is crucial to examine as much of the context of the problem as possible to avoid the possibility of omitting some vital concept or data. This is done here, to convey the richness of the real-world system being modelled and the

compromises necessary to arrive at a simplified yet requisite model. This research is part of the EU H2020 VALUMICS project which aims at improved understanding of the dynamics of food value chains. The general objective is to provide tools and approaches to enable decision makers to evaluate the impact of strategic and operational policies aimed at enhancing fairness, integrity, and resilience in future scenarios of sustainable food value chains (FVCs). The VALUMICS project applied a systems approach and involved an interdisciplinary group of experts to perform analysis of food system related issues. This provided insights on the structure, material flows, governance, economics, environmental impacts, and consumer behaviour related to different food value chain [56,57]. The research activities were carried out through the following case studies: Dairy cows to milk, Beef cattle to steak, Wheat to bread, Farmed salmon to fillets and Tomato to processed tomato. The FVCs all have a similar structure as depicted in Figure 2, showing the integration of flow charts of the selected case studies with the flow of products through similar stages of the supply chains.

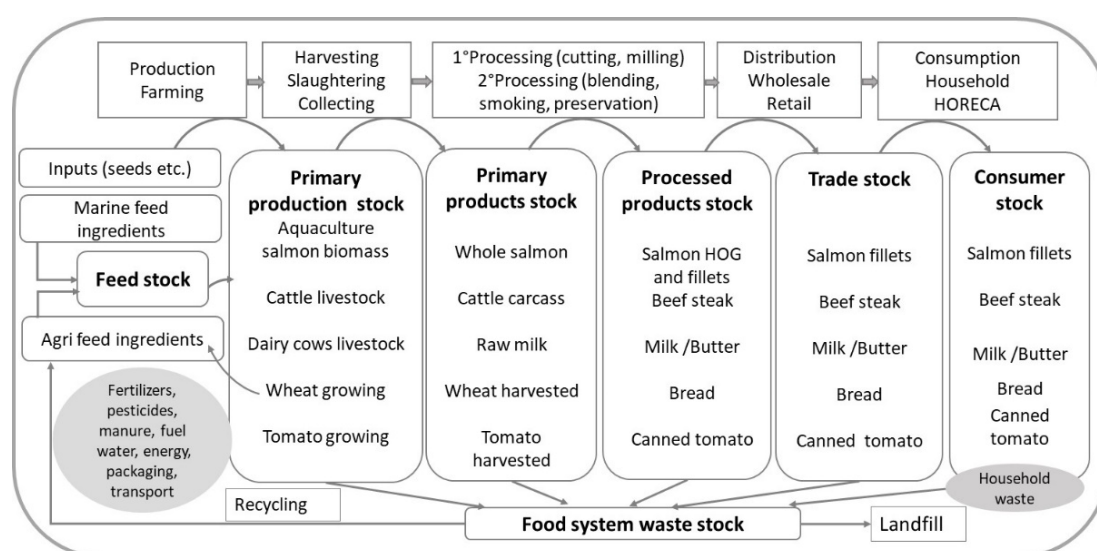


Figure 2. An overview of the food system approach demonstrating the key stages in food value chains and the associated flow of stocks for the food supply chains case studies in the VALUMICS project (adapted from [57]).

It is generally understood that primary production, in particular intensive farming, cause the main environmental burden in the whole life cycle of agri-food, including meat, dairy, and aquaculture products, where the use of feed connects the challenges of the food supply chains (Figure 2). The end market of products also matters, since the use of fuel during transport can also contribute considerable climate change impacts of exported products in distant markets and the waste generated throughout all stages [58,59].

Although most food value chains share many sustainability challenges, they differ in several aspects affecting the prevalence and extent of interorganisational fairness problems associated with profit distribution which is the focus of this paper and the scope of the simulation model described herein. Differences regarding interorganisational fairness can, to some extent, be attributed to the governance and the strategic coordination in terms of horizontal or vertical collaboration, and the rules for distributing value added [60–62]. This was demonstrated in the governance analysis in case studies in the VALUMICS project [8]. This section provides a summary of the main findings of governance analysis in terms of interfirm relations in four case study FVCs. Moreover, economic analysis in the selected case studies provide evidence to substantiate the findings. These include studies on market power, price formation and price transmission [63], assessment of economies of scale and technical efficiency [64], persistence of supply chain relations [65], including also statistical analysis of agribusiness profitability [66]. The economic analysis provided

useful insights to the functioning of FVCs [67] and further underpinned the conceptual modelling work described in Sections 4 and 5. Considering the socio-economic impacts, the profitability and competitiveness of the enterprises constituting food value chains are key elements to ensure employment and livelihoods.

A snapshot of the key results of the governance analysis (Figure 3) shows the most typical governance modes in these FVCs and, thus, possible sources of unfair market conditions. There is complexity in the governance modes, the size of firms has an impact, and various externalities have shaped the food value chains and motivated changes in the interfirm relations over time. Examples of factors which can influence decision making and contribute to procedural fairness in the food value chains are shown in Figure 3 (top). These factors are related to laws and regulations, power, environmental stability, collaboration, civil society pressure which motivates for example the uptake of voluntary standards including third party certification. Also, there are common macroeconomic factors that affect commodities' prices like global supply and demand, energy prices and trade agreements, including tariffs and quotas.

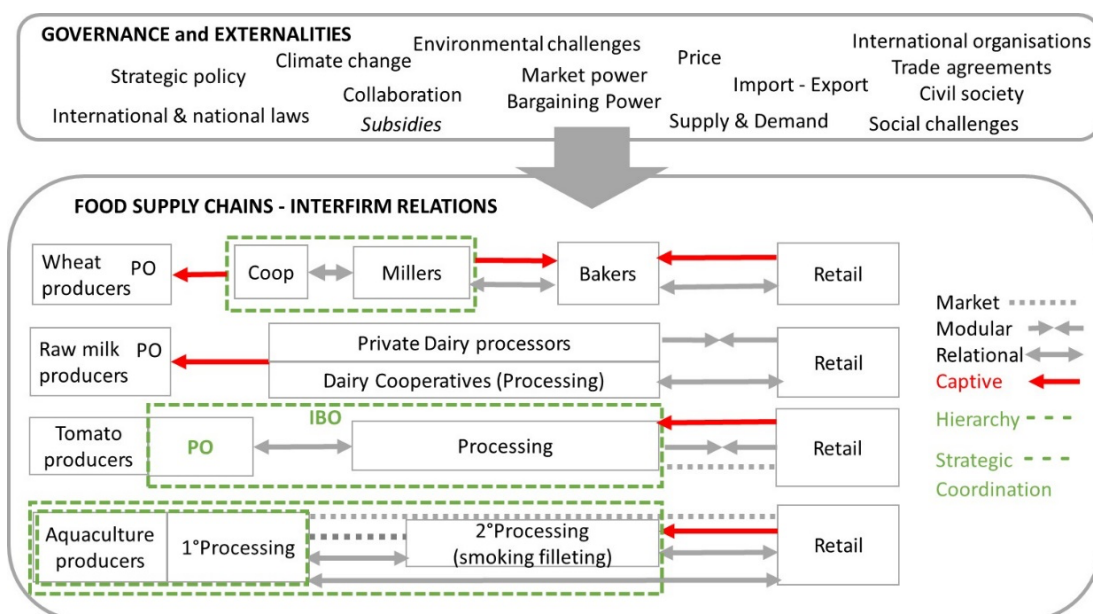


Figure 3. Governance and externalities influencing the functioning of the food system and the type of interfirm relations between key actors in the FVC case studies (authors' interpretation based on [8]). Note: PO: Producer Organisation, IBO Interbranch Organisation, Coop: Cooperative.

The governance modes in the FVCs were explored through the Global Value Chain (GVC) governance framework [60] using the typologies of interfirm relations which are defined by the degree of strategic coordination ranging from; (i) free market exchanges where partners can easily switch between buyers; (ii) modular where products are customised and the seller takes responsibility of investment needed to provide technology used; (iii) relational implies mutual dependence where trust and reputations are key elements but there is complexity in transactions, (iv) captive refers to strict monitoring from the lead firm and where switching to other partners is costly; and (v) hierarchies refers to vertically integrated firms where key actor has power over e.g., subsidiaries in the chain. In fact, there is complexity in these relations especially concerning large firms which is pointing to hybrid forms of governance. An example is when one firm can have different relations with their partners and may interact differently depending on e.g., markets, sales channels, and logistic priorities [68]. Governance structures are complex and include international as well as national regulations, and public (i.e., government regulations), private (i.e., cooperatives), and social (i.e., non-governmental organisations) forms of governance, acting vertically (e.g., along the chain) or horizontally (e.g., within a single level

of the chain) [69]. In all the FVCs in Figure 3, retail is the lead actor, with different relations with their suppliers often being captive ones (red arrows). Various types of interfirm relations are identified between actors in the different value chains; and strategic coordination (green broken lines) is evidently influencing the bargaining power of producers in the tomato and salmon chain. Various strategies and interventions such as interbranch organisations (IBO), producer organisations (PO), cooperatives, voluntary codes of practice, and mandatory legislation have been implemented to achieve fairer trading and working conditions, and greater transparency and information flow in food value chains. These interventions and mechanisms need to be suitable for each respective food sector and consider the overall food system [8]. Cooperative and PO membership is one of the main mechanisms used by farmers to improve their bargaining position [14] and research indicates that members are less likely to be subject to UTPs [23]. The POs are recognised and regulated by the EU (Reg 1308/2013) as part of the European Common Agricultural Policy (CAP) [70].

The interfirm relations in the wheat to bread chain in France point to a captive situation of farmers towards their cooperatives (red arrow in Figure 3) who coordinate with large millers. The captive situation of traditional bakers towards millers is possibly a risk of unfair trading practices in price negotiations between these actors. Moreover, the retailer as lead firm has a strong position towards millers and industrial bakers. Indeed, market imperfections were detected within the output and input markets for both the milling and baking sectors in France and the UK when market power was assessed by 'Mark-up' and 'Mark-down', or 'Lerner' index [71]. The French wheat market is integrated with the world market and leads the EU market concerning wheat price formation, but it is currently facing high competition from Black Sea grain exporters (i.e., Russia, Ukraine and Kazakhstan) [72].

The dairy to milk chain is characterised by bipolar governance where raw milk producers are captive suppliers towards processors and dairy cooperatives, the 'lead firms'. Modular or relational interfirm relations are identified where retailers are 'lead firms' and dairy cooperatives and private dairy processors are 'turn-key' suppliers or modular relations (Figure 3). Milk producers in Germany, France and the UK face a negative price/cost ratio in the long run, indicating low bargaining power despite being a part of producer cooperatives. Support available for producers includes POs and provision for mandatory contracts (under the EU "milk package" of reforms). A legal change to the framework for setting contracts has been introduced in France, and the UK has experimented with a voluntary code of best practice on contractual relationships between producers and processors. Currently, the POs are beginning to negotiate over volume management as well as price in France [73].

To substantiate further the governance analysis in the dairy chain in France, UK and Germany, economic analysis identified certain level of oligopsony and oligopoly power at the level of producers and processors [63]. Similarly, in another study a certain level of oligopoly for dairy processors in France, Italy and Spain has been reported [74]. Results from technical efficiency analysis in the European dairy industry indicate a certain degree of systematic failure, e.g., permanent managerial failures and structural problems in European dairy processing industry [75]. Stakeholder concerns exist around setting of prices between the producers as sellers and the processor and or retailer as main buyer, and volumes of milk supply agreed upon. Price negotiation of milk between the farmers and cooperatives has been pointed out as a potential UTP, since some producers may have a vested interest by being part-owners of the cooperatives. Price dynamics from producer level are almost completely transmitted to the wholesale level of the dairy value chain [63].

Contrary to the captive situation of producers in the dairy and wheat chains, the producers in the tomato and salmon chains have relational modes through contracts with their buyers. (Figure 3). This demonstrates the effect of strategic coordination of upstream

actors (as indicated by the green broken lines) through POs and Inter-Branch Organisations (IBOs) in the raw tomato to processed tomato chain in the Emilia-Romagna region of Northern Italy. The IBOs play a crucial role in price setup and balancing of power between producers and processors. The market power has switched towards producers after creation of the regional IBO, ensuring higher competitiveness and sustainability through mutual agreement on quality criteria and prices which benefits all. The governance between the producers (PO) and the processors is relational; but retailers, as lead firms in the chain, show aspects of both the modular and captive modes towards processors (Figure 3). Processors face significant “pressure” on their selling price when it comes to dealing with retailers (not part of the IBOs). The economic analysis indicates that price dynamics present at the producer and processing levels are not reflected at the retail level. Most of the retail purchases go through auctions where processors usually need to squeeze their margins during the negotiation process. Indeed, the reverse auction of retailers has been identified as a potential UTP [8,63]. The small tomato producers have taken advantage to improve scale efficiency by increasing the scale of operations, resulting in growth of total factor productivity at the producer level [76].

In the farmed salmon to fillet chain, the upstream consolidation of aquaculture companies through mergers and acquisition has reduced the number of farming companies; and has helped companies take advantage of scale and strengthened their position on global markets. The producers in the global aquaculture value chain benefit from favourable market conditions (e.g., demand far exceeding supply). The key players are large vertically-integrated aquaculture producers who have a strong bargaining position and a relational governance mode with the supermarket ‘lead firms’ (Figure 3, green dotted line). Third-party assessment and certification schemes enable hybrid governance forms and inter-firm relationships can have a range of forms from free market exchange where products are sold on spot market, to long-term relational contracts between large integrated companies and retail or large secondary processors. Small secondary processors may be captive towards retail [8,77]. Economic studies on market power in the salmon chain identified a “low-level” of market imperfectness [78], however, price transmission analysis shows that the salmon export price of Norway directly influences price development in the selected EU markets, France and Poland. Different value chain governance and interfirm relations directly define which actor of the value chain dominates price formation in the exporting country: retailers in France (having direct contractual relations with Norwegian exporters) and processors in Poland (directly owned by Norwegian companies) [63]. There are potential risks of UTPs concerning the strong position of producers and the possibility of influencing prices at the stock market [77].

4. Materials and Methods

4.1. Developing a Conceptual Hybrid System Dynamics/Agent-Based Model

In this section, the steps of the method for development of a conceptual hybrid simulation model are explained, showing how the defined problem and objectives are incorporated. In the VALUMICS project, this work was carried out iteratively using an agile approach, jointly by the modelling team and the food value chain case study subject matter experts. The conceptual modelling followed established practice to ensure the design and implementation of a valid and robust simulation model capable of providing means for virtual policy experimentation and decision analysis and optimisation. The modelling approach followed five general steps [28]: problem definition (boundary selection), dynamic hypothesis generation, simulation model formulation, model testing and use in policy evaluation. A similar approach is given by Randers [38], emphasising that modelers need to follow stages of conceptualisation (incorporating the first two of Sterman’s steps), formulation, testing and implementation. Similarly, Richardson & Pugh [79] and Roberts [80] propose the modelling stages as problem definition, system conceptualisation, model

formulation/representation, model behaviour and analysis, evaluation and policy analysis and use. In Figure 4, the stages used in the VALUMICS project for simulation modelling of food value chains are given.

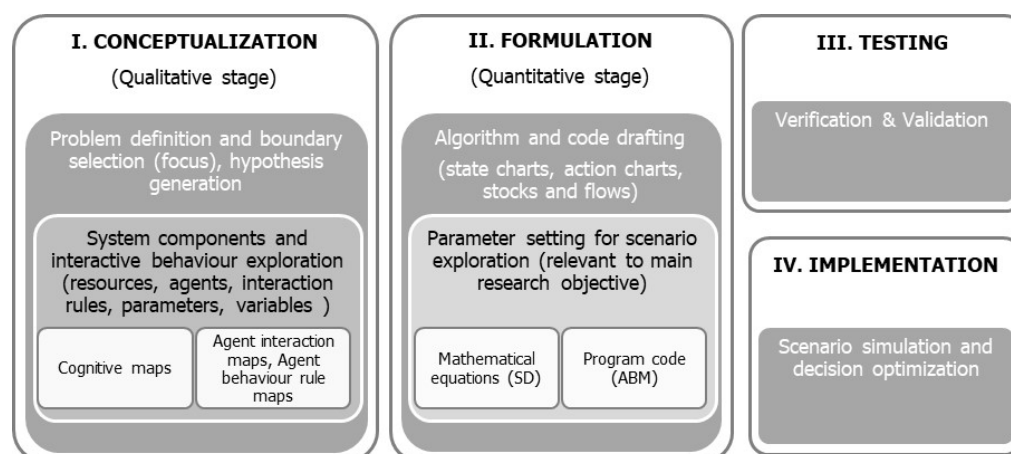


Figure 4. Key stages of the modelling approach in VALUMICS (Authors own conceptualisation previously presented in project deliverable [67]).

This paper’s focus is the first *conceptualisation* stage: this is the process of developing the modellers’ conceptual understanding of the components of the system and how these components influence each other’s behaviour [38]. In system dynamics, the main components are resources, flows, variables, and feedback resource interrelations. In ABM, the main components are agents, their attributes and behavioural rules, and agent interrelations [49].

Once the conceptualisation stage has identified the system and the agents, as well as their states, relationships, behaviours and interactions, the next step is to formalise these concepts. This is the *formulation* stage, which includes the quantitative model building. Formalisation is needed because even though the identified concepts may seem well-defined to the stakeholders, they may be far more context-dependent or situation-specific than the stakeholders realise—and models and computers cannot deal with ambiguity and context-dependency. That is, the model of the world needs to be made explicit, formal, and computer-understandable (as well as being human-understandable). Once formalised in pseudocode, this can then be implemented as a computer simulation. The idea is to design a simple enough, yet sufficient, SD/ABM architecture capable of capturing the system components common to all FVCs and agent levels and categories (in connection to the focus on fair value and fair contractual relations) and their interrelations, and then later to adjust and fine tune it to each specific FVC case study, including exploration of connections to anticipatory scenarios and transition pathways. Formalisation in SD comprises the stock and flow formal diagrams needed to account for the system structure and the proper mathematical interrelations among the model variables; whereas, in ABM it comprises the coding of agent behaviour in the model.

The subsequent *testing* stage covers model calibration and verification, with the purpose of proving the proper quantification of the simulation model. The final *implementation* stage involves the application of the simulation model to policy evaluation by carrying out “what-if” scenario simulations to test previously identified hypotheses and find how variation in key input variables influences the behaviour of the whole system. Future work will follow a research agenda completing these stages.

4.2. Sources of Domain Knowledge

To ensure a common understanding between the modelling team and the case study experts, joint practical workshops took place where the methodological approach was carried out, including the use of qualitative techniques such as cognitive maps according to cognitive mapping theory [81,82] as detailed by [83] (see Section 4.5). The team performed initial group modelling work on the conceptual model by using agent maps, decision tables and cognitive maps linked to the FVC case studies on tomato, wheat, salmon, and dairy. Following this, the expert teams worked together through online meetings and documentation of the problem structuring and problem definition, further using the cognitive maps to elucidate the agents' behaviours and interactions. A crucial purpose was to increase understanding among the modellers and the expert team working on future scenario developments in the VALUMICS project and for this purpose to put forward relevant "what-if" questions which the model was to be designed to answer. This process was also vital for the modellers to frame the main research question, explore the model boundary and generate dynamic hypotheses for simulation testing.

The details of the functioning of the French wheat to bread chain, including the governance and functioning of the value chain, are based on background knowledge of the VALUMICS expert team gained through the various analysis and empirical findings in the case studies as reported in the project's deliverables and published papers (see Section 3). This includes findings from governance analysis through expert or elite interviews, analyzed in conjunction the documentary and secondary data sources [8]. Furthermore, economic analysis on market power, price formation, technical efficiency and persistency of relations [63–65] and specifically in the context of the wheat to bread case study [71,72] provided insights to the real world system being modelled. The documentation of the conceptual model development was through agent tables and cognitive maps in group modelling workshops. The validation of the simulation modelling conceptualisation was carried out through the process of iterative group conceptual model building workshops (application of cognitive and agent maps), based on expert and stakeholders' opinion in relation to gaining agreement on the true representation of the system components and their interrelations. Where important information was missing, informed assumptions needed to be made based on documented expert opinion or published sources.

4.3. Fairness Metrics

The VALUMICS project considered two dimensions of fairness: procedural and distributive fairness. As mentioned in the introduction, interorganisational fairness can be measured by gross profit margin as a proxy for distributive fairness. The choice of fairness metrics in this paper is based on the conceptualisation and operationalisation of interorganisational fairness in [25]. When calculating gross profit margin, revenues were adjusted to include any subsidies and support, including environmental public financing (e.g., direct payments under CAP). The emergent pattern of interest is the observed distribution of adjusted gross profit: a desired emergent pattern is a fairer distribution of adjusted gross profit.

To measure procedural fairness, the VALUMICS project investigated the degree of market power by using as a proxy the Lerner Index for output market and relative mark-down index for input market. The Lerner Index L is a very widely adopted metric that provides an estimate of market power in an industry, measuring the price-cost margin through the difference between the output price of a firm and the marginal cost divided by the output price [84]. The index ranges from a high value of 1 to a low value of 0, with higher numbers implying greater market power. For a perfectly competitive firm, $L = 0$ and such a firm does not exercise market power; equally, when $L = 1$, a firm has monopolistic power. Analogously, one can define a mark-down index for the input market. Both indexes can be used as measures of the departure from perfect competition and so can be

considered as good measures of fairness according to economic theory. Cechura and Jaghdani [71] show that the Lerner Index, L_d for markdown or input market and L_u for markup or output market, respectively, can be calculated as

$$L_d = \frac{MRP_x - w_x}{MRP_x} \quad (1)$$

and

$$L_u = \frac{P - MC}{P} \quad (2)$$

where MRP_x represents marginal revenue product of input x , w_x is the price of input x , MC stand for marginal costs and P is the price of product. The Lerner index was originally defined only for the output market [85]. Cechura and Jaghdani [71] redefined it for the input market as well, building on work in [86].

4.4. Modelling Scope—Boundary and Hypothesis Generation

All modelling is about making informed choices of selection: what should be included in the model and what may be (reasonably) safely excluded without significant degradation of quality of results. In the “Conceptualisation” stage covered in this paper the focus is on problem definition and boundary selection (model scope), including relevant hypothesis generation. Scope is restricted according to the “Einstein’s razor” modelling maxim: “as simple as possible, but no simpler”. The boundary must not only be related to the main research question on distributive and procedural fairness in food value chains, but also to the choice of geographical location (country market) and number of agents involved. In VALUMICS, the wheat to bread chain was investigated in the context of the French market. This boundary selection is necessary for every simulation model due to technical (computational) and other constraints such as complexity, timing, access to and availability of relevant qualitative and quantitative data and resources for design and production. The purpose of the simulation modelling is not to produce an exact replica of the entire system and how it functions (impossible technically, and indeed unnecessary); but rather to capture the main factors and interrelations among system components with a reasonable trade-off between accuracy and simplicity, to ensure it can provide insights for the proper analysis of the system behaviour in relation to the main research questions, and exploration of options for solutions.

For reasons of available computational power, the number of tiers in the value chain was restricted to five (producer, collector, processor, retailer, consumer); and the number of actors (agents) at a given tier was restricted to a number for which simulations can be carried out in a reasonable time, at a reasonable computational cost. For each case study examined, this generic five-tier base FVC was then adapted to capture the attributes and characteristics of that case study FVC. This approach allowed for the greatest possible reuse of design and computer code, and minimised redundancy of effort.

At each tier, actors (agents) of three categories, small, medium, and large, were modelled, with the number of agents in each category informed by the real-world preponderance together with the technical feasibility of running a computer program instantiating that number of agents. This allowed modelling of the heterogeneity of real-world FVCs. Typically, there may be three to five large players at a given tier, with greater numbers of medium and/or small players. Since these limitations only become clear at the implementation stage, the exact numbers were to be decided at a later stage. The characteristics of the different categories of actors were also required, and the values of necessary parameters. In cases where the technical limitations did not allow modelling of the full population of actors in a given FVC, the approach taken was to model a proportion of them as agents.

To further constrain the simulation model scope, it was decided to focus on existing value chain structures, assuming that these will remain valid at least until 2030. Scenario development in subsequent VALUMICS work uses existing FVC structures (numbers of tiers and types of actors and interactions among them, though possibly changing numbers

of actors at each tier) up to the year 2030. One reason for this was that it would be easier for stakeholders to relate to: there is a lot of uncertainty after 2030. It was decided that if a transition pathway to a future scenario envisaged specific changes to FVCs (e.g., certain actors join the chain, certain actors leave), that would be addressed in future work.

The focus on interorganisational fairness required the specification of one or more research questions related to the fairness problem definition. For that purpose, and to determine of the scope of the model, a cognitive mapping technique was applied to define agent decisions and interactions. While the model developed focussed on fairness, it had to do so while considering other constraints related to sustainability—that are not to be modelled per se, but that are considered as external constraints from the environment. Otherwise, it might well be the case that a way to make a FVC fairer is simply to continue depleting the environment or externalise the costs of social regulation to the environment (as is already the case in many FVCs, where farmers simply “pass on” to the environment the constraints they receive from downstream players).

4.5. Stages of Conceptual Modelling: Cognitive Maps and Related Techniques

The modelling effort applies techniques including cognitive mapping and agent behaviour mapping for system analysis and agent rules definition, to determine the model content including the physical and social elements of the system and the links between them. The VALUMICS conceptual model derived is described in the Results section. The goal of this qualitative agent modelling approach is to support the conceptual, functional, and technical specification for the quantitative modelling phase.

The behaviour of each agent can be captured in a story/narrative which explains which agent does what with whom and when. This requires detailed input from the subject matter experts of the case study teams, to define agents and their decisions, behaviours, and interactions. A useful high-level approach to this is to consider what actors there are in a particular value chain and, for each one, think of how that actor (modelled as an agent) will behave in practice:

- What happens in “a day in the life” of this actor—what does this actor do?
- What interactions has this actor with other actors, whether in the same tier or not (which agent rules affect which other agent rules)?
- What interactions has this actor with the environment?
- What decisions does this actor make (related to fairness, e.g., pricing decisions)?
- What influences these decisions (prices, regulations, environmental factors)?

Cognitive maps are used to capture what system element influences what, and decision tables are used to identify the agent decisions together with what influences them and their other characteristics. In the VALUMICS hybrid model the behaviour of agents was defined in terms of decision rules executed upon special events and in interactions with other agents.

Cognitive mapping [87,88] is related to mapping individual and group mental models about a research question and to Cognition theory [81,82]. For example, Elsawah et al. [83] use cognitive mapping to capture and analyse qualitative information from stakeholders on the issue of viticulture irrigation in Australia, and further to inform a better approach for capturing agents’ decision-making procedures. They demonstrate how cognitive mapping brings advantages for ABM design and parameterisation: “The action-oriented nature of concepts in the map makes it explicit about “what action is taken”, and “by whom”. Therefore, the structure and flow of decision making becomes explicitly represented in a cognitive map. Thus, the cognitive map allows for capturing behaviour rather than just attributes of agents, as well as the interactions between actors’ perceptions, states of their worlds, and choice states’ [83].

Agent interaction mapping (AIM) and Agent behaviour mapping (ABM) are techniques, associated with the cognitive mapping technique but with a different aim, to analyse agents, agents’ rules and interrelations [89]. The design purpose and theoretical

framework of the cognitive and agent mapping techniques are presented in Table 1. The results of the cognitive mapping are presented in detail in this paper using as an example the wheat to bread case study (Section 5.3).

Table 1. Cognitive and agent mapping techniques.

| Mapping Technique | Design Purpose | Theory |
|------------------------------------|---|--|
| Cognitive Map (CoM) | Mapping key market resources, agents, influencing factors and variables and eliciting feedback interrelations; Analysis of market structure and feedback dynamic; | Cognitive mapping theory [81,82] RDT [90,91] |
| Agent Interaction Map (AIM) | Analysis of agents' interactions and influencing dynamics; Mapping agent interactions including identifying each agent's key behavioural decision rules and key influencing factors; | BDT [92,93,94] Stakeholders Management mapping concept [87] |
| Agent Behaviour Map (ABM) | Mapping each agent's behavioural decision rule in more detail through an agent behavioural map; Analysis of agent decision rules and behaviour; | BDT [92,95] |

5. Results

In a conceptual modelling exercise, the “result” is the model derived. Initial work to lay the foundation for the modelling is to provide a depiction of the FVC structure. This is carried out in conjunction with subject matter experts. It entails (1) identifying the different tiers of agents which play a role in the supply chain, as well as (2) determining relevant categories of agents within each tier. Most food supply chains have the same basic structure (i.e., producers, collectors, processors, retailers, consumers). However, some of those categories may merge or, conversely, be divided into several tiers depending on the supply chain. Notwithstanding such variations among specific FVCs, we may reiterate that most FVCs have the same basic structure. This allows us to create a general hybrid SD/ABM simulation modelling architecture (prototype conceptualisation) applicable for all FVCs being studied. All the main system components relevant to the research focus (problem definition and boundary selection) are taken into consideration, including their interrelations (between financial resources and production resources and between agents and agents, and agents and resources).

For each case study, the physical and social elements of the food system are listed up. These elements can be agents (capable of independent decision making) or stocks, flows or controls (the SD elements). Having identified these elements, the problem definition then leads to “what-if” questions.

5.1. What-If Questions

“What-if” questions capture the hypotheses the model is intended to address and test. Here, the range of such questions for the VALUMICS case studies is discussed.

Procedural fairness can be addressed by the model as experimental factors using what-if questions. Such questions can address different procedural fairness issues, including unequal power among partners to define prices and unequal access to information resulting from the way in which the individual FVC is governed (e.g., producer organisations and price auctions). Examples of procedural fairness what-if questions to be addressed include the lists of prohibited practices in business-to-business relationships according to the Directive on UTPs. These include customs which may be considered of a procedural nature, e.g., relating to payment terms (such as late payments) and other elements of contractual relations (such as short-notice cancellations).

Further questions of interest to explore within the model include aspects of the link between the degree of market/bargaining power of FVC actors and the gross margin profit in terms of fair value distribution by exploring the impact of financial markets, reference price negotiation etc. By observing to what extent gross margins vary in different what-if experiments, it may be possible to indicate when the FVC is becoming fairer.

In general, what-if questions may be categorised as follows:

1. Changes in macroscopic environment parameter values
 - (a) Choices for production, consumption and other environment parameter values that will affect the macro-operation of the simulation model run, as they will prescribe values for supply and demand, e.g.:
 - What happens to the FVC when levels of production/consumption change?
 - How do changes in supply/demand affect agents: do some agents cease trading?
 - What is the effect on fairness of these changes?
 - (b) Hypothetical interventions by introducing regulatory, competition structure, and technological related changes which have the purpose of improving fairness in the simulated FVC systems, e.g.:
 - What if the level of CAP subsidies was changed?
 - What if the CAP subsidy were removed?
 - What if price controls came in?
2. Micro-level what-if questions that determine or affect the behaviour of an individual actor/agent's decision making. For example, how easy is it to switch partners? These are elucidated by exploring that agent's linkages in the cognitive map for the case study.

5.2. The French Wheat to Bread Case Study

Figure 5, derived from the joint modelling workshops described in Section 4.2, gives more detail on the separation of the French wheat to bread FVC into tiers and sizes of actors than presented earlier in Figure 2. In the wheat to bread supply chain, the "processing" stage is divided between the collectors (who collect and store wheat) and the millers (who transform the wheat into flour). Key actors are large millers, who are mostly large producer-owned cooperatives and control supply of flour mixes to traditional bakeries, putting bakeries in a relatively captive relationship as discussed before. The consumption of bread from traditional bakeries currently represents around 50% of national bread consumption in France [8].

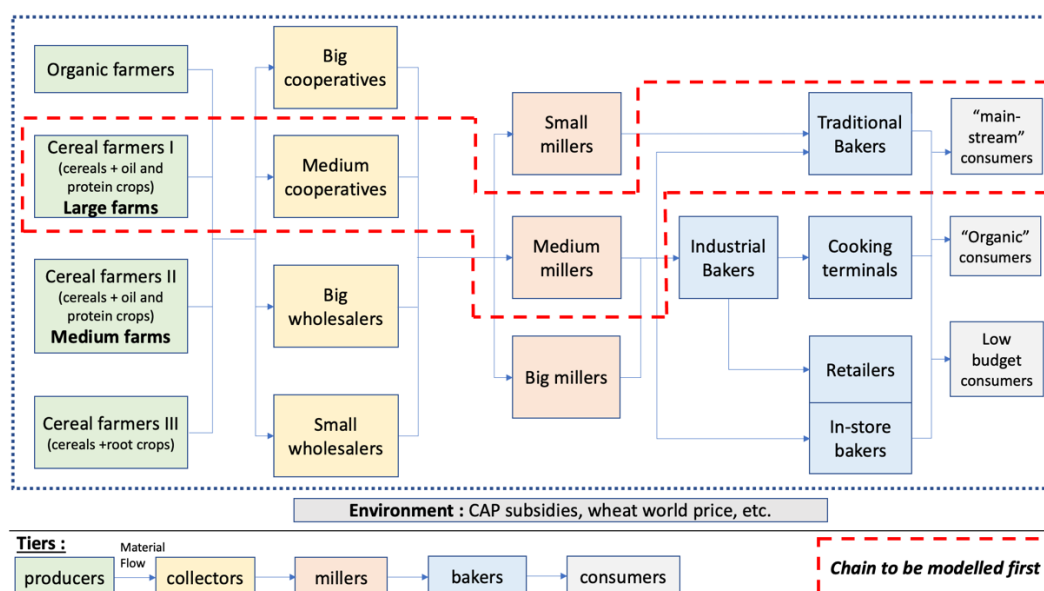


Figure 5. French wheat to bread FVC agents to be modelled as part of the ABM simulation modelling conceptualisation, with the highest priority agents indicated by a red dashed line.

The agent-based model must distinguish among different “types” of actors within each tier (Section 4.4). Capturing this diversity of actors is crucial to the ABM as it allows the factoring in of the diversity of responses/strategies that agents might have in the supply chain and therefore how the supply chain might evolve in different scenarios.

The main question then is how or on what basis to differentiate actors within each tier. Agents can be categorised according to different criteria e.g., size of the agent—which can reflect the number of employees, or the production volume, or value of production, etc.—type of production system, type of business model, etc.

For some tiers in the supply chain, the categorisation may be relatively straightforward. For example, this is the case for the wheat to bread FVC retailers, which can be clearly divided into traditional bakers, industrial bakers and in-store bakers: these have very different business models, economic productivity levels, etc. The topic of categorising certain specific actors (e.g., industrial bakers) according to size (e.g., medium and large) is a question in itself.

In other less straightforward cases, the objective of the model, i.e., what output variables are most important to the model, can drive out relevant agent distinctions. For the VALUMICS wheat to bread model, the key output variables include the number of workers, size of agents and value added. It is thus pertinent to make a distinction between agents characterised by very different levels of workers employed or productivity, as opposed to different levels of value-added or revenue (a variable which is potentially connected to the type of outlet the agents mainly have). For example, small millers have a lower material productivity than big millers but mainly sell their flour to traditional bakeries, at higher prices than those attained by an industrial bakery; while medium and large millers have a higher material productivity but sell a high share of their flour at lower prices to industrial bakers.

In addition, the distinction between FVC agents may be more generally bounded by constraints such as data availability. When looking for data to characterise the different agents, it may be that the available data only allows the distinguishing of actors in a very limited way (e.g., by size). One may thus choose to differentiate agents from a qualitative perspective (for example, based on the nature—private or cooperative—of the agent) rather than from a quantitative perspective. Such a distinction derived from more qualitative aspects must be based on the fact that these types of actors behave differently when facing a certain type of constraint.

It is also important to determine the unit/scale of the agent which is considered in the model. For example, processors may be considered at the processing unit level or at the company level. It is important to make an informed decision about whether to consider one or the other in the model. Again, one choice may be favoured by the data to hand. The case of retailers is a good example: the number of units might be high, but the number of groups is usually low (less than ten in most EU countries). In a model concerned with fairness, that considers the equity of value distribution, it may be more relevant to work at the group level, since even if different units are part of the group, only a few (or sometimes even one) central purchasing departments manage purchases for all units.

This initial modelling step starts the process of collecting quantitative data on the FVC, e.g., number of actors in each tier, type of actor, volumes handled, number of workers, productivity, etc. This data then feeds into the next quantitative formalisation step.

5.3. Cognitive Map for the French Wheat to Bread Chain

A cognitive map seeks to capture and display links or relationships among the previously listed elements of the FVC. The group modelling sessions mentioned in the previous Section 4.2 led to the cognitive map for price negotiation in the French wheat to bread case study food value chain shown in Figure 6 and subsequent explanatory notes.

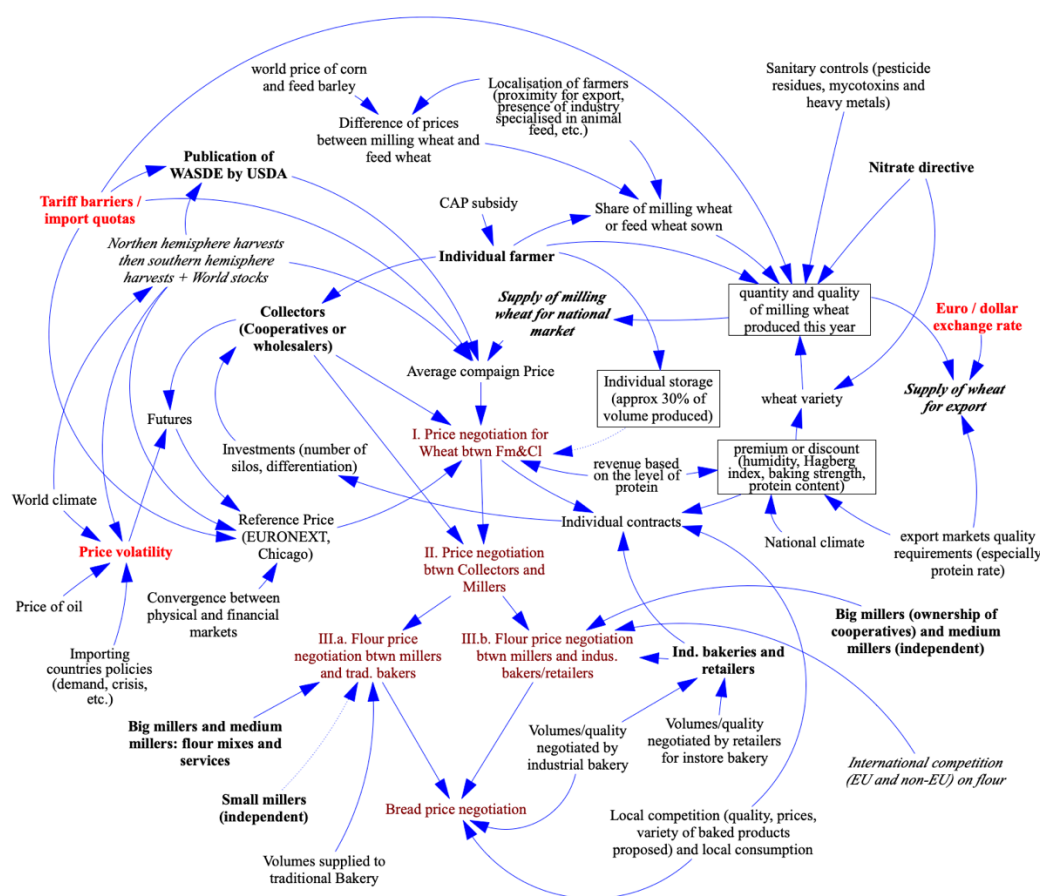


Figure 6. Example of cognitive map for price negotiations in the French wheat to bread FVC (Authors’ own conceptualisation first presented at a conference [96]) Note: Value chain actors and certain regulations/directives are shown in boldface; External (environment) variables affecting wheat volume/quality are in boxes; External (environment) economic variables are in boldface red; Supplies of wheat are shown in boldface italic; Decisions involving negotiation and/or calculation are shown in upright red; Other factors are shown in upright or italic font.

The content of this map is now explained in more detail. All wheat to bread value chain actors depend on the international market because: (a) there are low trade barriers

for imported wheat; (b) there are changing markets with different requirements; and (c) the domestic market is saturated.

5.3.1. Factors Influencing the Price Negotiation for Wheat between Farmers and Collectors

Collectors may be either cooperatives, which control 70% of the wheat market, or wholesalers, which control 30% [8]. Producers tend to be captive suppliers towards cooperatives. The main factors influencing the price negotiation between farmers and collectors are the world price and the volumes/quality produced by French producers. This world price is based on

- the volumes produced (mainly the volume produced in the Northern hemisphere in July, and to a lesser extent the volume produced in the Southern hemisphere in December/January),
- the state of the world wheat stocks,
- the state of the global demand for wheat (both for milling wheat and for feed wheat),
- the production costs of the most efficient competitors on the world market (currently Russia) and
- the extant trade policies (tariff barriers, import quotas).

The most influential publication on world prices is the “World Agricultural Supply and Demand Estimates” (WASDE) published every month [97].

In terms of policies, cereal production is dominated by tariff barriers. This barrier can be lower for quotas negotiated for some countries. Trade agreements on these quotas therefore have a strong influence (e.g., future negotiations with Ukraine) on both the evolution of prices of wheat and volumes of wheat produced in France and the EU.

The policies of the importing countries, which may vary or even undergo significant changes (crisis, embargo, etc.), may also cause variations in the market. The price of oil, impacting both the price of farm inputs and transport, also has a strong impact on world prices. The euro/dollar exchange rate also influences the ability of EU countries to export.

The ability to reach the quality required for milling wheat (as measured by humidity, Hagberg index, baking strength and, in particular, protein content rate) depends on: (i) the evolution of requirements for these indicators (especially protein rate); (ii) the climate (which influences most aspects of wheat quality); and (iii) fertilisation conditions (which influence the protein rate). The fertilisation conditions are framed by the nitrate directive, which regulates the level of nitrogen input allowed. This directive can therefore influence the priorities of selection of wheat varieties, by motivating the favouring of varieties which optimise the use of nitrogen. For some years, there has been an obligation for collectors to state the protein content in contracts, in order to apply differential tariffs according to this protein level. The effect of the protein rate on the market is as follows:

- if the protein rate is low: the price on the domestic market decreases and possibilities for export decrease, increasing the stocks of unsold wheat; and
- if the protein rate is high: prices rise on the domestic market and the possibilities for export increase.

Pesticide residues, heavy metal, and mycotoxin levels are analysed for wholesale market allotments. When these sanitary controls are negative, the wheat is very rarely destroyed, but simply mixed with other healthier volumes.

Climate also influences the annual volume and quality of wheat produced. For example, if spring is too rainy in France, the wheat will be potentially inappropriate for milling (and will therefore partly be assigned to feed), which may raise the issue of supply for millers and the issue of proper valuation for producers.

The global supply of wheat and the quality of this wheat influence the way it is valorised. On the domestic market, wheat firstly is processed by millers (around 6MT/year), and then sold for feed, starch production or biofuels. On the international market, wheat is mainly used for bakery, if it reaches the protein rate requirements of buyers. The price

differential between bread wheat and feed wheat depends on the world price of corn and feed barley. Two other important factors influencing the average price for wheat between farmers and collectors are the storage/sales policy and the use of hedging tools (futures markets). Finally, the price negotiation for wheat differs according to the production contracts negotiated before the campaign.

The premium value added to the average price of wheat is less for red label than it is for no pesticide residues chains. For organic wheat, the evolution of the price follows different market dynamics: most of the time, organic wheat is twice the price of conventional wheat, but the ratio between the two productions can evolve differently from year to year. The volumes of organic wheat are low at present, but the growth rate is substantial.

The question, as for any differentiation, is “will the premium be kept if the differentiated production becomes the norm”? And if not, at which level of differentiated production (compared to overall production) will the level of premium become negligible?

5.3.2. Factors Influencing the Price Negotiation for Wheat between Collectors and Millers

The price negotiation for grain between collectors (cooperatives or wholesalers) and millers mainly depends on the wheat prices (and therefore on average campaign prices). The premium prices are valorised all along the chain, involving different prices for wheat and different prices for the flour. Big mills may get cheaper prices for grain than medium and small mills, but to a small extent, as collectors try to keep their margins positive.

The milling industry in France is very concentrated and most wheat production for milling is collected by the biggest cooperatives, then processed through their own mills. More than 50% of flour production is ground by millers that belong to collectors. However, even in this integrated situation, millers negotiate prices for wheat allowing them to keep their margins at the mill level, so that they can generate profits to invest in modernisation of the mill. Mills are managed as if they were independent production units. In terms of strategies (of both sourcing and selling), one can distinguish small, medium, and large millers (4–5 millers grind around 50% of the production which is turned into flour) [8].

Two different markets must be distinguished: (i) the traditional bakery market, with prices including both flour and services (financial, advisory and logistic) offered to bakers by millers; (ii) the industrial bakery and the retailer market, where prices of flour are about half those for the traditional bakery market. The contracts are fully indexed to the price of wheat. However, the market of flour is an over-the-counter market, meaning that it is not transparent at all compared to the wheat market. Medium size mills have the best economic conditions: they mainly—but not only—work with traditional bakeries (allowing them to better valorise flour) and specialise in specific kind of flour. Large mills have a weaker economic position, especially those which invested the most in flour export in the 1980's, as export is now marginal, meaning that their structural expenses are somewhat too high. Small mills only work with traditional bakeries but cannot supply the industrial market, and so are unable to increase their activity, with fierce competition among them.

5.3.3. Factors Influencing the Price Negotiation for Wheat between Millers and Bakers/Retailers

Small and medium millers mainly sell their flour to traditional bakeries (medium bakers may also sell some volume to industry) while big millers mainly sell their flour to traditional bakeries within their franchise, industrial bakeries, and retailers. Traditional bakeries have low bargaining power and are considered as “price takers”. Industrial bakeries and retailers (which can purchase their flour from actors outside France, and in bigger quantities, follow the evolutions of the flour market) are usually able to purchase flour for lower prices (mainly influenced by EU competition on flour, as they less commonly purchase flour from outside EU, largely for quality reasons).

The ability of millers to control a flour mix (the mix between flour and additives) that is adapted to a bakery puts them in a rather dominant position in the negotiation of flour prices. However, the larger the volumes purchased by the industrial bakers and retailers (compared to the volumes purchased by traditional bakeries), the less dominant is the millers' position in this negotiation.

5.3.4. Factors Influencing the Price Negotiation for Bread

The price of bread is influenced by several factors:

- (i) the price at which flour was purchased (which depends on the quality of flour purchased). Wheat represents around 5% to 7% of the price of bread. Flour (including wheat) represents about 15% of the price of bread (this proportion is about 30% for organic bread). This means that raw materials play a small role in the price of bread, relative to personnel costs and other factors;
- (ii) the quality of bread produced (which affects the level of labour force required);
- (iii) the local competition on bread/food items locally sold. This refers to several dimensions: the ability to park easily to buy bread (especially in suburban areas), the diversity of baked products proposed, etc.;
- (iv) the position/importance of bread in the overall market strategy of the actor selling bread. For example, in the case of retailers, data from the OFPM (the French Observatory of Price and Margins Formation for Food Products) shows that the sale of bread in supermarkets can be done without any margin at the scale of the bakery section, with the simple aim of being able to offer bread to customers within the entire shopping basket purchased.

5.4. Subsequent Steps in Developing the Hybrid SD and ABM Hybrid Model

The structure of the generic FVC model is based on the problem at hand (the fairness issue) and the objective of the modelling (test fairness improvement options with different experimental factors based on scenarios). Therefore, the agents that are part of the model and the agent decisions that are relevant for the modelling are selected based on the problem statement and the modelling objectives.

After developing the cognitive map, the agents are further defined in terms of the properties that define them (agent attributes), the behaviours that cause state changes (decisions) and the interactions resulting from these behaviours (activities). While this paper does not treat in detail the subsequent quantitative modelling steps in the modelling process, a brief overview is given here to provide a flavour of the work involved and help set an agenda for future research.

The main financial and production resources and variables for a generic FVC actor are shown in Figure 7 as two interlinked modules on the left side (the system dynamics part), while the relevant ABM components such as agents' decisions and agents' parameters are presented on the right side.

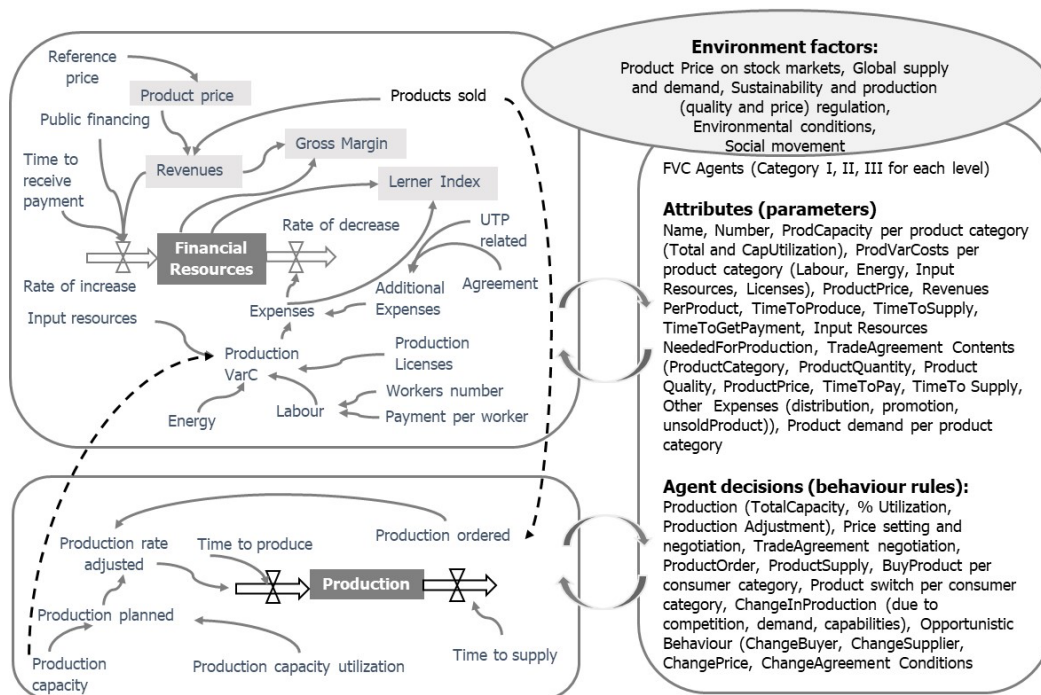


Figure 7. A hybrid of SD and ABM simulation modelling conceptualisation for a generic FVC (Authors' own conceptualisation adapted from VALUMICS project's deliverable [67]). System dynamics flows of products and finance are on the left, and agent attributes and decisions on the right.

This figure, which applies to each agent category in each FVC, shows: production inventory (in fact, there is one such module for each of conventional production, e.g., industrial baking or farming using pesticides, and alternative production, e.g., traditional baking or organic/ecological farming), at bottom left; financial resources balance, top left; and agents (attributes and behaviour), right.

The production inventory module is related to the quantities of products planned and supplied, and adjusted according to demand (orders), capacity to produce and average rates of utilisation, including time to produce and time to supply to buyer. The financial resources module is related to the financial balance for each agent and depends on revenues (a function of product price, quantity bought, time to obtain payment and public financing) and expenses for production (which depends on variable costs for production, and any additional expenses agreed or coming from unfair trading behaviour).

The production variable costs are connected to monetary values of production input resources, energy needed for production, labour needed for produced quantities and other costs such as production license costs or ecological standardisation taxes or equipment costs. To differentiate between conventional production and alternative production, we need to have monetary values for conventional and alternative input resources, traditional and renewable energy and payment rate per worker including social security and health care taxes.

To parameterise the production inventory and financial resources modules, the following information is needed: average or min to max values for product quantities produced every production period (once or more times per year), and euros received and spent per production volume per relevant time period (every month or three months or per year or other). For the agent module, it is necessary to clearly define the agent's attributes (parameters such as name and number of agents in each category and values for the main variables in the production and financial resource modules), and the agent decision routines controlling or managing the variables from these modules.

The decisions are fleshed out in agent decision tables. Table 2 illustrates the decisions of agents in a generic FVC. These tables are tools for collecting and organising qualitative

and quantitative information of the main agent decision routines identified through the cognitive and agent mapping techniques.

For each agent decision routine, the following needs to be clearly explained:

- Main goal (decision routine purpose),
- Level and timing of the decision,
- Detailed procedural description of each food value chain agent decision routine,
- Any quantitative parameters associated with the decision routine,
- Main related factors (endogenous and exogenous variables) conditioning the decision routine,
- What if questions (hypothetical changes in the system) that can affect the agent decision routine.

The decision table then gives detailed information about each decision type for each agent in the food value chain being considered.

Table 2. Example of agent attributes and decisions for a generic FVC.

| Agent Group | Attributes | Decisions |
|----------------------|---|--|
| Producers | Production capacity, production cost, risk aversion, min margin, number of customers, number of suppliers | Initial investment, capacity planning, raw material sourcing, raw material price negotiation, production planning, store or sell (to whom?), internal (own product) price setting, price negotiation |
| Collectors | Handling capacity, production cost, min margin, number of customers, number of suppliers | Decide on own product price, offer price to a producer, sell to whom? |
| Primary processors | Processing capacity, production cost, min margin, number of customers, number of suppliers | Initial investment, source commodity, process, offer price to seller, process, increase/decrease capacity, supply to market, decide on own product price, accept/decline price offer from customer |
| Secondary processors | Number of suppliers, number of customers, production cost, min margin, capacity | Offer price to seller, decide on own product price |
| Retailers | Retail capacity, min margin, liquidity, cost, number of customers, number of suppliers | Source processed product, offer price to seller, decide on own product price, |
| Consumers | Socio-demographic, diet preferences, willingness to pay, demand | Want to buy product, accept/decline price of product Choice between different product e.g., conventional or alternative |

The particular agent behaviours and decisions chosen for quantitative formulation are those relevant to the what-if questions identified as important for the problem to be modelled. These questions will then drive out the agent decisions that need to be modelled to answer the questions. The relevant agent decisions will then be modelled quantitatively and used to derive fully specified algorithms, represented either as pseudocode or (as in Figure 8) as formal flowcharts.

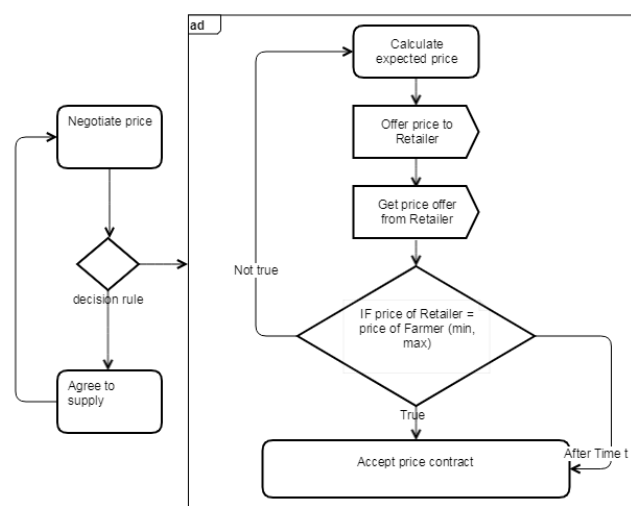


Figure 8. Example of decision rules for processor selling to retailer.

Agent-specific variables and decisions are taken as endogenous to the modelled system and will produce the emergent behaviour of the whole system. Other variables (factors) such as stock exchange prices, global supply and demand, relevant macroeconomic indicators, and market regulation are exogenous to the modelled system; a requirement for further work is to develop understanding of their influence on the system components (on agent decisions related to price setting and negotiation, UTP, production quantities etc.). Future papers will present details of this ongoing work.

6. Discussion

Major food systems need to contribute to the UN's Sustainable Development Goals (SDGs) by increasing sustainable production efficiencies (more food with less impact), reducing food waste and loss, and shifting diets towards more plant-based food [4,5]. The Green Deal and the Farm to Fork strategy of the European Commission were launched with ambitious aims to tackle the challenges of the European food system and motivate transition to sustainable food system [6,7]. The simulation model described here is designed to assess the impact of intervention strategies e.g., for food value chain actors in future scenarios and how this may influence the gross profit margin and level of employment. An example is the implementation of regulations or policies set to influence transitions of the food system such as the Farm to Fork strategy to enhance the sustainability of European food systems.

As discussed earlier, food system transitions towards sustainability depend on fair procedures and outcomes. Exploration of the interorganisational fairness problem needs to account for interconnected effects between distributional fairness and procedural fairness, and effects of related and unrelated regulation: (a) how fair or unfair interrelations affect fair or unfair value distributions; (b) how bargaining power affects distributional and procedural fairness; and (c) how related and unrelated regulations affect the degree of fairness in value distribution and procedural interrelations. Gross margin can be used as a proxy indicator for fair value distribution, and for procedural fairness the Lerner index can give an estimate of the degree of market power, while the sizes and numbers of suppliers or buyers and the availability of alternatives can indicate bargaining power position [13,14,25,77].

The problem researched here (fair value distribution and fair procedural interrelations among food value chain agents) is not isolated but is connected to the overall global food system challenges of making food value chains economically, environmentally, and socially sustainable and resilient [1,3,98,99]. Simulation can help decision makers to assess the impact of interventions aimed at enhancing sustainability and resilience and how

these interventions can subsequently impact fairness in food value chains. Fairness considerations are integral to the success of sustainability transitions since sustainable food consumption policies and intervention tools require the engagement and acceptance of key stakeholders including FVC actors [100]. In addition, power asymmetries in FVCs may contribute to resistance to change by actors with more power in the system thus hampering more transformative change down the line [101]. Given the complexity in the power structure of food value chains and the potential occurrence of unfair trading practices, there is value in exploring the problem of fairness using simulation models that can capture the FVC dynamics through operational indicators.

The result of the work is the conceptual model. It builds on key common features such as reference price, which influences trading prices and price negotiation; production seasonality and production inventory planning and adjustment according to orders and demand; financial resources management connected to sales revenues; public financing and product variable costs including additional costs related to unfair trading practices. Also, there are common macroeconomic factors that affect commodities prices such as global supply and demand, energy prices, trade tariffs and quotas which need to be considered. However, there are differences in connection to market competition structure and regulation in every FVC, and in connection to timing of production, supply, and demand, including differences in consumption patterns, which will need to be reflected in actors' decisions. These distinctive aspects of different FVCs can then be added to the generic conceptual model to capture appropriately the specifics of the FVC being modelled.

The applicability and appropriateness of the hybrid SD/ABM modelling approach adopted for the other FVCs (see Section 3) provides motivation for continuing the modelling exercise through the further stages of formulation, implementation and validation discussed in Section 4 and outlined at the end of Section 5; and extending this approach to other FVCs. This will allow users of the model to experiment on and test various what-if policy and market interventions and to inform the development of transition pathways towards more environmentally sustainable and socially fair food value chains. Examples of such experimental interventions include: (a) testing how a change in volumes produced/consumed may impact the whole of the food value chain in terms of (i) structure of the chain, (ii) total number of jobs and (iii) value-added distribution along the chain; (b) different "scenarios" connected to production, external financing, governance e.g., market led, or public/civil society led, changing level of CAP subsidies ("public financing"), and adjusting for fair value distribution.

In the context of the VALUMICS project, the future scenario development work considered contrasting paradigms to encapsulate, in essence, a set of "generic" hypotheses of how the overall governance of European food chains will evolve and plausible pathways on how to get there. This included scenario work to describe sustainable transitions of food systems while considering simultaneously socio-economic and environmental issues in a just transition perspective. A design of "just transition pathways" were elucidated through a methodological framework including quantification of employment until 2030 for the French Dairy Sector, using the decarbonation pathway for the agricultural sector issued from the French National Low-Carbon Strategy as reference [102]. As mentioned earlier the needs of this work fed into the specifications of the conceptual modelling described in this paper. The lack of data turned out to be a limiting factor in the model formulation and high-impact assumptions needed to be made when data gaps were encountered, especially concerning firm level data and particularly for non-farmer actors. The formulation, implementation, and use of the quantitative model in the future scenario work will be the subject of a forthcoming stream of research.

7. Conclusions

The contribution of this paper is to apply a conceptual hybrid modelling methodology to the problem of interorganisational fairness in FVCs. We have illustrated how tech-

niques such as cognitive mapping can be used for system analysis and conceptual modelling of the fairness problem and argued that a hybrid system dynamics and agent-based model is appropriate for representing FVCs and fairness insights from the model conceptualisation, i.e., the cognitive and agent maps, as well as the longer-term goal of this stream of research, i.e., to explore how this conceptual model can be formulated quantitatively in terms of equations and algorithms and implemented and validated as a policy scenario simulator for policy experimentation and optional recommendations. Thus, we have addressed the paper's objective to develop an agenda for research into hybrid simulation models of FVCs and so motivate further research in this area.

The overview from case studies explored through governance and economic analysis characterised the “real world problem” to be addressed by the simulation model. Interorganisational fairness is related to governance resulting in power asymmetries and thus a potential for unfair trading practices. The FVC case studies presented here have common features in relation to the ABM focus on distributive and procedural fairness, using gross margin and Lerner index as indicators. The wheat to bread case study was selected because it has many characteristics in common with the other FVCs. The main agent decisions and decision heuristics related to the management of product inventory and financial resource flows are also common to all food value chains. These common features give an opportunity for designing a generic hybrid SD/ABM production inventory, financial resource, and resource flow structure, where the components can be modelled from the perspective of system dynamics, while the main actors' decision and actions related to managing these resources will be modelled from an agent-based modelling and simulation perspective. This approach meets the objective of hybridisation of the two simulation perspectives of SD and ABM.

As has been demonstrated, our approach using cognitive maps to derive a conceptual model is flexible yet comprehensive enough to capture the most important elements of real-world FVCs, and in particular address the interorganisational fairness problem which was a major objective of this study. This conceptual model will be built upon to develop a computational simulation model, the results of which will be reported in a forthcoming stream of research.

Author Contributions: Conceptualisation, S.M. and G.O.; methodology, S.M., R.K. and I.Y.G.; background and resources, G.O., D.B., A.S., G.E., I.Đ., L.Č., T.J.J., P.-M.A., W.L., É.H., M.T. and S.G.B. formal analysis, S.M., R.K., É.H., W.L., G.O. and I.Y.G.; validation, S.M., R.K., É.H., W.L. and P.-M.A.; investigation, S.M. and R.K.; data curation, R.K., É.H., W.L. and P.-M.A.; writing—original draft preparation, G.O., S.M., I.Y.G., É.H., R.K. and W.L.; writing—review and editing, S.M., G.O. and N.M.S.; visualisation, G.O., S.M., W.L., É.H. and R.K.; project administration, S.G.B., S.M., G.O., P.-M.A., D.B., A.S., I.Đ. and M.T.; funding acquisition, S.G.B., S.M., G.O., P.-M.A., D.B., A.S., I.Đ. and M.T. All authors have read and agreed to the published version of the manuscript.

Funding: The research on which this paper is based formed part of the VALUMICS project “Understanding Food Value Chain and Network Dynamics” funded from the European Union's Horizon 2020 research and innovation programme under grant agreement No 727243.

Institutional Review Board Statement: Not applicable. Ethical review and approval were waived for this study because the study did not involve the processing of personal data. The study adhered to ethical standards for the VALUMICS project in accordance with EU Horizon 2020 regulations on data management concerning ethical and societal aspects (Directive (EU) 2016/680).

Informed Consent Statement: Written informed consent was obtained from subjects involved in providing background information regarding the value chain governance.

Data Availability Statement: Not applicable.

Acknowledgments: We would like to thank members of ASSIST Software for useful discussions.

Conflicts of Interest: The authors declare no conflict of interest. The funders had no role: in the design of the study; in the collection, analyses, or interpretation of data; in the writing of the manuscript; or in the decision to publish the results.

References

1. FAO. *Sustainable Food Systems: Concept and Framework*. 2018. Available online: <http://www.fao.org/3/ca2079en/CA2079EN.pdf> (accessed on 28 October 2021).
2. Springmann, M.; Clark, M.; Mason-D'Croz, D.; Wiebe, K.; Bodirsky, B.L.; Lassaletta, L.; et al. Options for keeping the food system within environmental limits. *Nature* **2018**, *562*, 519–525. <https://doi.org/10.1038/s41586-018-0594-0>
3. COM. (European Commission) *Towards a Sustainable Food System: Group of Chief Scientific Advisors*. 2020. Available online: https://ec.europa.eu/info/sites/default/files/research_and_innovation/groups/sam/scientific_opinion_-_sustainable_food_system_march_2020.pdf (accessed on 10 October 2021).
4. Glauber, Joseph W. 2018. *Developed country policies: Domestic farm policy reform and global food security*. In 2018 Global food policy report. Chapter 7. Pp. 54–61. Washington, DC: International Food Policy Research Institute (IFPRI). https://doi.org/10.2499/9780896292970_07
5. Willett, W.; Rockström, J.; Loken, B.; Springmann, M.; Lang, T.; Vermeulen, S.; Garnett, T.; Tilman, D.; Declerck, F.; Wood, A.; et al. Food in the Anthropocene: The EAT–Lancet Commission on healthy diets from sustainable food systems. *Lancet* **2019**, *393*, 447–492. [https://doi.org/10.1016/S0140-6736\(18\)31788-4](https://doi.org/10.1016/S0140-6736(18)31788-4)
6. COM. (European Commission) *The European Green Deal*. COM/2019/640 Final. 2019. Available online: <https://eur-lex.europa.eu/legal-content/EN/TXT/?uri=CELEX:52019DC0640> (accessed on 25 November 2021).
7. COM (European Commission). *Farm to Fork Strategy for a Fair, Healthy and Environmentally-Friendly Food System*. 2020. Available online: https://ec.europa.eu/food/farm2fork_en (accessed on 5 October 2021)
8. Barling, D.; Gresham, J. eds. *Governance in European Food Value Chains; The VALUMICS project funded by European Union's Horizon 2020 No 727243*. Deliverable D5.1; University of Hertfordshire: Hatfield, UK, 2019; 237 pages. DOI 10.5281/zenodo.4956324.
9. Wijnands, J. H., van der Meulen, B. M., & Poppe, K. J. (2007). *Competitiveness of the European food industry: An economic and legal assessment 2007*: Office for Official Publications of the European Communities. ISBN: 978-92-79-06033-5
10. Barling, D.; Sharpe, R.; Gresham, J.; Mylona, K. *Characterisation Framework of Key Policy, Regulatory and Governance Dynamics and Impacts upon European Food Value Chains: Fairer Trading Practices, Food Integrity, and Sustainability Collaborations*. The VALUMICS project funded by European Union's Horizon 2020 No 727243. Deliverable D3.3; University of Hertfordshire: Hatfield, UK, 2018; 416 pages. DOI.10.5281/zenodo.3458159
11. Busch, G.; Spiller, A. Farmer share and fair distribution in food chains from a consumer's perspective. *J Econ. Psych.* **2016**, *55*, 149–158. <https://doi.org/10.1016/j.joep.2016.03.007>
12. Kumar, N. The power of trust in manufacturer-retailer relationships. *Harvard Business Review* **1996**, *74*(6), 92–106.
13. Cox, A.; Ireland, P.; Lonsdale, C.; Sanderson, J.; Watson, G. *Supply Chains, Markets and Power: Managing Buyer and Supplier Power Regimes*; Routledge: New York, NY, USA, 2002.
14. Gorton, M., Angell, R., Dries, L., Urutyan, V., Jackson, E, White, J. Power, buyer trustworthiness and supplier performance: Evidence from the Armenian dairy sector. *Industrial Marketing Management* **2015**, *50*, 69–77 <http://dx.doi.org/10.1016/j.indmarman.2015.05.024>
15. Bonanno, A.; Russo, C.; Menapace, L. Market power and bargaining in agrifood markets: A review of emerging topics and tools. *Agribusiness* **2017**, *34*(1) 6–23. <https://doi.org/10.1002/agr.21542>
16. Deconinck, K. (2021) Concentration and market power in the food chain, OECD Food, Agriculture and Fisheries Papers, No. 151, OECD Publishing, Paris. <http://dx.doi.org/10.1787/3151e4ca-en>
17. Brown, J. R.; Cobb, A. T.; Lusch, R. F. The roles played by interorganizational contracts and justice in marketing channel relationships. *J Business Research* **2006**, *59*(2), 166–175. doi: <https://doi.org/10.1016/j.jbusres.2005.04.004>
18. Griffith, D. A.; Harvey, M. G.; Lusch, R. F. Social exchange in supply chain relationships: The resulting benefits of procedural and distributive justice. *J Operations Management* **2006**, *24*(2), 85–98. doi: <https://doi.org/10.1016/j.jom.2005.03.003>
19. Duffy, R.; Fearn, A.; Hornibrook, S. Measuring distributive and procedural justice: An exploratory investigation of the fairness of retailer-supplier relationships in the UK food industry. *British Food Journal* **2003**, *105*(10), 682–694.
20. DG IPOL (2015) Directorate-General for Internal Policies, Policy Department C, Citizens' Rights and Constitutional Affairs (2015) The general principles of EU administrative procedural law (PE 519.224), European Parliament.
21. Fałkowski, J.; Ménard, C.; Sexton, R.J.; Swinnen, J.; S. Vandeveld (Authors), Marcantonio, F. Di and P. Ciaian (Editors) (2017), *Unfair trading practices in the food supply chain: A literature review on methodologies, impacts and regulatory aspects*, European Commission, Joint Research Centre. doi: 10.2760/800
22. European Parliament (2019) Directive (EU) 2019/633 on unfair trading practices in business-to-business relationships in the agricultural and food supply chain, Official Journal of the European Union, L111 (25/04/2019) Retrieved from: <http://data.consilium.europa.eu/doc/document/PE-4-2019-INIT/en/pdf>
23. Barathova, K., Cacchiarelli, L., Di Fonzo, A., Lai, M., Lee, H., Menapace, L., Pokrivcak, J., Rahbauer, S., Rajcaniova, M., Russo, C., Sorrentino, A., Swinnen, J. and Vandervelde, S., *Pass-through of unfair trading practices in EU food supply chains*, Russo, C. editor(s), Publications Office of the European Union, Luxembourg, 2020. doi:10.2760/837579
24. Sun, Y.; Liu, Z.; Yang, H. How Does Suppliers' Fairness Affect the Relationship Quality of Agricultural Product Supply Chains? *J Food Quality* **2018**, article id 9313068. doi:10.1155/2018/9313068

25. Gudbrandsdottir, I.Y.; Olafsdottir, G.; Oddsson, G.V.; Stefansson, H.; Bogason, S.G. Operationalization of Interorganizational Fairness in Food Systems: From a Social Construct to Quantitative Indicators. *Agriculture* **2021**, *11*, 36. <https://doi.org/10.3390/agriculture11010036>
26. Conrad, S. H. The dynamics of agricultural commodities and their responses to disruptions of considerable magnitude. *Korean System Dynamics Review* **2005**, *6*(1), 17–32.
27. Meadows, D.L. *Dynamics of Commodity Production Cycles*. Wright-Allen Press, Cambridge, MA 1970.
28. Sterman, J.D. *Business Dynamics: Systems Thinking and Modeling for a Complex World*. Irwin/McGraw-Hill: Boston, Mass. 2000
29. Utomo, D.S.; Onggo, B.S.; Eldridge, S. Applications of agent-based modelling and simulation in the agri-food supply chains. *European J Operational Research* **2018**, *269*(3) 794–805. <https://doi.org/10.1016/j.ejor.2017.10.041>.
30. Ingalls, R. G. (1998). *The value of simulation in modeling supply chains*. Proceedings of the 30th conference on Winter simulation, WSC 1998, Washington DC, USA, December 13-16, 1998. ISBN 0-7803-5134-7
31. Beamon, B. M. Supply chain design and analysis: Models and methods. *Int. J Production Economics* **1998**, *55*, 281–294.
32. Terzi, S.; Cavalieri, S. Simulation in the Supply Chain Context: A Survey. *Computers in Industry* **2004**, *53*, 3–16. [http://dx.doi.org/10.1016/S0166-3615\(03\)00104-0](http://dx.doi.org/10.1016/S0166-3615(03)00104-0)
33. Brailsford, S.C.; Eldabi, T.; Kunc, M.; Mustafee, N.; Osorio A. F. Hybrid simulation modelling in operational research: A state-of-the-art review. *European J Operational Research* **2019**, *278*, 721–737.
34. Morel, B.; Ramanujam, R. Through The Dynamics the of Looking Glass of Complexity: Adaptive Organizations as Systems and Evolving. *Organization Sci.* **1999**, *10*(3), 278–293.
35. Von Bertalanffy, L. (1968). *General System Theory: Foundations, Development, Applications*. Georg Braziller: New York City, NY.
36. Andrew, A.M. General systems theory: Ideas and applications. *Kybernetes* **2003**, *32*(3/4), 571–574.
37. Forrester, J. *Origin of System Dynamics*. System Dynamics Society. 1961. Available at: <http://www.systemdynamics.org/DL-IntroSysDyn/start.htm>.
38. Randers, J. Guidelines for Model Conceptualization. In Jorgen Randers (eds.) *Elements of the System Dynamics Method*. 1980. 117–138. Pegasus Communications.
39. Morecroft, J. Visualising and Rehearsing Strategy. *Business Strategy Review* **1999**, *10*(3), 17–32.
40. Rahim, F. H. A.; Hawari, N. N.; Abidin, N. Z. Supply and demand of rice in Malaysia: A system dynamics approach. *Int. J Sup. Chain. Mgt.* **2017**, *6*, 1–7.
41. Minegishi, S.; Thiel, D. System dynamics modeling and simulation of a particular food supply chain. *Simulation Practice and Theory* **2000**, *8*(5), 321–339. DOI: 10.1016/S0928-4869(00)00026-4
42. Georgiadis, P.; Vlachos, D.; Iakovou, E. A system dynamics modeling framework for the strategic supply chain management of food chains. *J Food Engineering* **2005**, *70*(3): 351–364. DOI: 10.1016/j.jfoodeng.2004.06.030
43. Stave, K. A.; Kopainsky, B. A system dynamics approach for examining mechanisms and pathways of food supply vulnerability. *J Environmental Studies and Sciences* **2015**, *5*(3), 321–336. <https://doi.org/10.1007/s13412-015-0289-x>
44. Brzezina, N.; Kopainsky, B.; Mathijs, E. Can Organic Farming Reduce Vulnerabilities and Enhance the Resilience of the European Food System? A Critical Assessment Using System Dynamics Structural Thinking Tools. *Sustainability* **2016**, *8*, 971–1002. <https://doi.org/10.3390/su8100971>
45. Choi, T. Y.; Dooley, K. J.; Rungtusanatham, M. Supply networks and complex adaptive systems: Control versus emergence. *J Operations Management* **2001**, *19*(3), 351–366. [https://doi.org/10.1016/S0272-6963\(00\)00068-1](https://doi.org/10.1016/S0272-6963(00)00068-1)
46. Higgins, A. J.; Miller, C. J.; Archer, A. A.; Ton, T.; Fletcher, C. S.; McAllister, R. R. J. Challenges of operations research practice in agricultural value chains. *J Oper. Res. Soc.* **2010**, *61*, 964–973. DOI: 10.1057/jors.2009.57
47. Holland, J. H. Complex adaptive systems. *Daedalus* **1992**, *121*(1), 17–30.
48. Anderson, P. Complexity theory and organization science. *Organization Sci.*, **1999**, *10*(3), 216–232.
49. Macal, C. M.; North, M. J. Tutorial on agent-based modelling and simulation. *J Simulation* **2010**, *4*(3), 151–162. <https://doi.org/10.1057/jos.2010.3>.
50. van Dam, K.H., Nikolic, I. and Lukszo, Z. *Agent-Based Modelling of Socio-Technical Systems*. Springer. 2013. ISBN: 9400749325
51. Phelan, M.; McGarraghy, S. Grammatical evolution in developing optimal inventory policies for serial and distribution supply chains. *Int. J Production Res.*, **2016**, *54*(1), 336–364, DOI: 10.1080/00207543.2015.1085653
52. Axtell, R. (2000). *Why agents? On the varied motivations for agent computing in the social sciences*. Brookings Institution, Washington, Center on Social and Economic Dynamics. Available at: <https://www.brookings.edu/research/why-agents-on-the-varied-motivations-for-agent-computing-in-the-social-sciences/>
53. Vempiliyath, T.; Thakur, M.; Hargaden, V. Development of a Hybrid Simulation Framework for the Production Planning Process in the Atlantic Salmon Supply Chain. *Agriculture* **2021**, *11*, 907. <https://doi.org/10.3390/agriculture11100907>
54. Gudbrandsdottir, I.Y., Olafsdottir, A.H., Sverdrup, H.U., Bogason, S. G., Olafsdottir, G., Stefansson, G. (2018). *Modeling of Integrated Supply-, Value- and Decision Chains within Food Systems*. Proceedings in System Dynamics and Innovation in Food Networks 2018, p. 341–348, DOI: <http://dx.doi.org/10.18461/pfsd.2018.1827>
55. Taghikhah, F.; Voinov, A.; Shukla, N.; Filatova, T.; Anufriev, M. Integrated modeling of extended agro-food supply chains: A systems approach, 2021, *European J Operational Research* **2021**, *288*(3), 852–868, <https://doi.org/10.1016/j.ejor.2020.06.036>.

56. Olafsdottir, A. H.; Gudbrandsdóttir, I.Y.; Sverdrup, H.U.; Bogason, S. G.; Olafsdottir, G.; Stefansson, G. System Analysis and System Dynamics Applied in Complex Research Projects - The Case of VALUMICS. *Int. J. Food System Dynamics* **2018**, *9*(5), 409–418. DOI: <http://dx.doi.org/10.18461/ijfsd.v9i5.953>
57. Gudbrandsdottir, I.Y.; Olafsdottir, G.; Bogason, S.G. Modelling food supply networks. *Aquaculture Europe* **2019**, *44*(1), 32–36. DOI: <https://doi.org/10.5281/zenodo.5569277>. Available at: <https://valumics.eu/wp-content/uploads/2019/10/AE-vol44-1-VALUMICS.pdf>
58. Ziegler, F.; Winther, U.; Hognes, E.S.; Emanuelsson, A.; Sund, V.; Ellingsen, H. The carbon footprint of Norwegian seafood products on the global seafood market. *J Ind. Ecol.* **2013**, *17*, 103–116. <https://doi.org/10.1111/j.1530-9290.2012.00485.x>.W.
59. Chen, W.; Jafarzadeh, S.; Thakur, M.; Ólafsdóttir, G.; Mehta, S.; Bogason, S.; Holden, N.M. Environmental impacts of animal-based food supply chains with market characteristics. *Science of the Total Environment* **2021**, *783*, 147077 <https://doi.org/10.1016/j.scitotenv.2021.147077>
60. Gereffi, G.; Humphrey, J.; Sturgeon, T. The governance of global value chains. *Review of International Political Economy* **2005**, *12*(1), 78–104. doi.org/10.1080/09692290500049805
61. Ponte, S.; Gibbon, P. Quality standards, conventions and the governance of global value chains, *Economy and Society* **2005**, *34*(1), 1–31. DOI:10.1080/0308514042000329315,
62. Ponte, S.; Sturgeon, T. Explaining governance in global value chains: A modular theory-building effort, *Review of International Political Economy* **2014**, *21*(1), 195–223. DOI: 10.1080/09692290.2013.809596
63. Svanidze, M.; Cechura, L.; Duric, I.; Jaghdani, T.J.; Olafsdottir, G.; Thakur, M.; Samoggia, A.; Esposito, G.; Del Prete, M. *Assessment of Price Formation and Market Power along the Food Chains*; The VALUMICS project funded by European Union's Horizon 2020 No 727243; Deliverable: D5.5; Leibniz Institute of Agricultural Development in Transition Economies (IAMO): Halle, Germany, 2020; 114 pages.
64. Čechura, L.; Žáková Kroupová, Z.; Rumánková, L.; Jaghdani, T.J.; Samoggia, A.; Thakur, M. *Assessment of Economies of scale and technical change along the food chain*. The VALUMICS project funded by European Union's Horizon 2020 No 727243. Deliverable: D5.6; Czech University of Life Sciences: Prague, Czech Republic; 2020; 169 pages.
65. Jaghdani T. J.; Johansen, U.; Thakur, M.; Đurić, I. *Assessment of persistence of business/trade relationships along the selected food chains of different European countries and sectors*. The VALUMICS project funded by European Union's Horizon 2020 No 727243. Deliverable: D5.3; Leibniz Institute of Agricultural Development in Transition Economies (IAMO): Halle, Germany, 2020; 43 pages.
66. Aditjandra, P.; Pang, G.; Ojo, M.; Gorton, M. and Hubbard, C. *Report on statistical analysis of agribusiness profitability*. The VALUMICS project, funded by European Union's Horizon 2020 No 727243. Deliverable: D5.4; Newcastle University: Newcastle, UK, 2019; 48 pages. DOI: 10.5281/zenodo.5087814
67. Olafsdottir, G.; McGarraghy, S.; Kazakov, R.; Gudbrandsdottir, I.Y.; Aubert, P.M.; Cook, D.; Cechura, L.; Bogason, S.G. *Functional specifications and design parameters for the implementation of the quantitative modelling*. The VALUMICS project funded by European Union's Horizon 2020 No 727243. Deliverable 5.2; University of Iceland: Reykjavik, Iceland, 2019; 47 pages. <https://doi.org/10.5281/zenodo.5106551>
68. Carbone, A. Food supply chains: coordination governance and other shaping forces. *Agricultural and Food Economics* **2017**, *5*, 3. DOI 10.1186/s40100-017-0071-3
69. Gereffi, G.; Lee, J. Economic and social upgrading in global value chains and industrial clusters: Why governance matters. *J Bus. Ethics* **2016**, *133*, 25–38. <https://doi.org/10.1007/s10551-014-2373-7>
70. European Parliament (2013) Regulation (EU) 1308/2013 Establishing a common organisation of the markets in agricultural products. Official Journal of the European Union <https://eur-lex.europa.eu/LexUriServ/LexUriServ.do?uri=OJ:L:2013:347:0671:0854:EN:PDF>
71. Čechura, L.; Jaghdani, T.J. (2021) Market Imperfections within the European Wheat Value Chain: The Case of France and the United Kingdom. *Agriculture* **2021**, *11*, 838. <https://doi.org/10.3390/agriculture11090838>
72. Svanidze, M.; Đurić, I. Global Wheat Market Dynamics: What Is the Role of the EU and the Black Sea Wheat Exporters? *Agriculture* **2021**, *11*, 799. <https://doi.org/10.3390/agriculture11080799>
73. French Competition Authority (2018): *Avis n° 18-A-04 du 3 mai 2018 relatif au secteur agricole*. <https://www.autoritedelaconcurrency.fr/sites/default/files/commitments/18a04.pdf> (accessed Nov 25, 2021)
74. Koppenberg, M.; Hirsch, S. Output market power and firm characteristics in dairy processing: Evidence from three EU countries. *J Agric Econ.* **2021**, *00*, 1–28. <https://doi.org/10.1111/1477-9552.12460>
75. Čechura, L.; Žáková Kroupová, Z. (2021) Technical Efficiency in the European Dairy Industry: Can We Observe Systematic Failures in the Efficiency of Input Use? *Sustainability* **2021**, *13*, 1830. <https://doi.org/10.3390/su13041830>
76. Čechura, L.; Žáková Kroupová, Z.; Samoggia, A. Drivers of Productivity Change in the Italian Tomato Food Value Chain. *Agriculture* **2021**, *11*, 996. <https://doi.org/10.3390/agriculture11100996>
77. Olafsdottir, G.; Mehta, S.; Richardsen, R.; Cook, D.; Gudbrandsdottir, I.Y.; Thakur, M.; Lane, A.; Bogason, S. G. Governance of the farmed salmon Value Chain from Norway to the EU. *Aquac. Eur.* **2019**, *44*, 5–19. DOI: 10.5281/zenodo.5494435.
78. Jaghdani, T.J.; Cechura, L.; Ólafsdóttir, G.; Thakur, M. *Market power in Norwegian Salmon Industry*. In Proceedings of the 60th Annual Meeting of the Gesellschaft für Wirtschafts- und Sozialwissenschaften des Landbaues e.V. (Society for Economic and Social Sciences of Agriculture) (GEWISOLA), Halle, Germany, 23-25 September 2020. DOI 10.22004/ag.econ.305590

79. Richardson, G., Pugh, A. Introduction to System Dynamics Modeling with DYNAMO. *J Oper Res Soc* **1997**, *48*, 1146 <https://doi.org/10.1057/palgrave.jors.2600961>
80. Roberts, N.H. *An Evaluation of Introduction to Simulation: The System Dynamics Approach*. In Proceedings of the 1981 International System Dynamics Research Conference, p. 303.
81. Kelly, G. *The Psychology of Personal Constructs: a Theory of Personality*. Norton: New York City, NY, 1955.
82. Huff, A. S.; Eden, C. Managerial and organizational cognition. *Int. Studies of Management & Organization* **2009**, *39*(1), 3–8. Available at: <http://dx.doi.org/10.2753/IMO0020-8825390100>
83. Elsayah, S.; Guillaume, J.H.A.; Filatova, T.; Rook, J.; Jakeman, A. A methodology for eliciting, representing, and analysing stakeholder knowledge for decision making on complex socio-ecological systems: From cognitive maps to agent-based models. *J Environmental Management* **2015**, *151*, 500–516. <https://doi.org/10.1016/j.jenvman.2014.11.028>
84. Elzinga, K. G.; Mills, D. E. The Lerner index of monopoly power: origins and uses. *Amer. Econ. Rev.* **2011**, *101*(3), 558–64. DOI:10.1257/aer.101.3.558
85. Lerner, A.P. The Concept of Monopoly and the Measurement of Monopoly Power. *Rev. Econ. Stud.* **1934**, *1*, 157–175. <https://doi.org/10.2307/2967480>
86. Kumbhakar, S.C.; Baardsen, S.; Lien, G. A New Method for Estimating Market Power with an Application to Norwegian Sawmilling. *Rev. Ind. Organ.* **2012**, *40*, 109–129. doi:10.1007/s11151-012-9339-7
87. Ackermann, F.; Eden, C. Strategic Management of Stakeholders: Theory and Practice. *Long Range Planning* **2011**, *44*(3), 179–196. <https://doi.org/10.1016/j.lrp.2010.08.001>
88. Eden, C.; Ackermann, F. SODA - The Principles. In J. Rosenhead & J. Mingers (Eds). *Rational Analysis for a Problematic World Revisited: Problem Structuring Methods for Complexity, Uncertainty and Conflict*. Wiley: Hoboken, NJ, 2001, pp. 21–42.
89. Kazakov, R.; Howick, S.; Morton, A. Managing complex adaptive systems: A resource/agent qualitative modelling perspective. *European J Operational Research* **2021**, *290*(1), 386–400. <https://doi.org/10.1016/j.ejor.2020.08.007>
90. Pfeffer, J. & Salancik, G.R. (1978). *The External Control of Organizations: A Resource Dependence Perspective*. Stanford University Press: Stanford, CA.
91. Hillman, A.J.; Withers, M.C.; Collins, B.J. Resource Dependence Theory: A Review. *J Management* **2009**, *35*(6), 1404–1427. <https://doi.org/10.1177/0149206309343469>
92. Kahneman, D.; Tversky, A. (1982). The simulation heuristic. Judgment under uncertainty: Heuristics and biases, 201–208.
93. Gigerenzer, G. Bounded rationality: The adaptive toolbox. *Int. J Psychology* **2000**, *35*(3–4), 203–204.
94. Kahneman, D.; Tversky, A. Prospect Theory: An Analysis of Decision under Risk. *Econometrica* **1979**, *47*(2), 263–292.
95. Kahneman, D. Maps of bounded rationality: Psychology for behavioral economics. *American Economic Review* **2003**, *93*(5), 1449–1475. DOI: 10.1257/000282803322655392
96. McGarraghy, S.; Kazakov, R.; Huber, É.; Loveluck, W.; Gherasim, M.; Ailoaie, C.; Aubert, P.-M. *Interventions on the French wheat-to-bread food value chain and their effects on equitable value distribution: insights from a policy scenario simulator*. In Proceedings of EURO XXXI, Athens, Greece, 7 July 2021. Available at: https://www.euro-online.org/conf/euro31/treat_abstract?frompage=search&paperid=2285 (accessed on November 26, 2021)
97. WAOB World Agricultural Outlook Board (n.d). *World Agricultural Supply and Demand Estimates (WASDE)* <https://www.usda.gov/oce/commodity/wasde> (accessed on November 25, 2021)
98. UN [United Nations]. *Goal 12: Ensure Sustainable Consumption and Production Patterns: Facts and Figures*. Available online: <https://www.un.org/sustainabledevelopment/sustainable-consumption-production>
99. FAO, IFAD, UNICEF, WFP and WHO. 2021. *The State of Food Security and Nutrition in the World 2021. Transforming food systems for food security, improved nutrition and affordable healthy diets for all*. Rome, FAO. Available online: <https://doi.org/10.4060/cb4474en>
100. Saviolidis, N.M.; Olafsdottir, G.; Nicolau, M.; Samoggia, A.; Huber, E.; Brimont, L.; Gorton, M.; von Berlepsch, D.; Sigurdardottir, H.; Del Prete, M.; Fedato, C.; Aubert, P.-M.; Bogason, S.G. Stakeholder Perceptions of Policy Tools in Support of Sustainable Food Consumption in Europe: Policy Implications. *Sustainability* **2020**, *12*, 7161. <https://doi.org/10.3390/su12177161>
101. Gudbrandsdottir, I.Y.; Saviolidis, N.M.; Olafsdottir, G.; Oddsson, G.V.; Stefansson, H.; Bogason, S.G. Transition Pathways for the Farmed Salmon Value Chain: Industry Perspectives and Sustainability Implications. *Sustainability* **2021**, *13*, 12106. <https://doi.org/10.3390/su132112106>
102. Aubert, P.-M.; Gardin, B.; Huber, É.; Schiavo, M.; Alliot, C. Designing Just Transition Pathways: A Methodological Framework to Estimate the Impact of Future Scenarios on Employment in the French Dairy Sector. *Agriculture* **2021**, *11*, 1119. <https://doi.org/10.3390/agriculture11111119>