



<b>Title</b>	Potential role of mesenchymal stem cells (MSCs) in the breast tumour microenvironment: stimulation of epithelial to mesenchymal transition (EMT)
<b>Authors(s)</b>	Martin, F. T., Dwyer, R. M., Kelly, J., et al.
<b>Publication date</b>	2010-01-20
<b>Publication information</b>	Martin, F. T., R. M. Dwyer, J. Kelly, and et al. "Potential Role of Mesenchymal Stem Cells (MSCs) in the Breast Tumour Microenvironment: Stimulation of Epithelial to Mesenchymal Transition (EMT)." Springer-Verlag, January 20, 2010. <a href="https://doi.org/10.1007/s10549-010-0734-1">https://doi.org/10.1007/s10549-010-0734-1</a> .
<b>Publisher</b>	Springer-Verlag
<b>Item record/more information</b>	<a href="http://hdl.handle.net/10197/5012">http://hdl.handle.net/10197/5012</a>
<b>Publisher's statement</b>	The final publication is available at <a href="http://www.springerlink.com">www.springerlink.com</a>
<b>Publisher's version (DOI)</b>	10.1007/s10549-010-0734-1

Downloaded 2026-05-01 23:36:41

The UCD community has made this article openly available. Please share how this access benefits you. Your story matters! (@ucd\_oa)



© Some rights reserved. For more information

**Authors:** FT Martin<sup>1</sup>, RM Dwyer<sup>1, 2</sup>, J Kelly<sup>1</sup>, S Khan<sup>1</sup>, JM Murphy<sup>2</sup>, C Curran<sup>1</sup>, N Miller<sup>1</sup>, E Hennessy<sup>1</sup>, P Dockery<sup>3</sup>, FP Barry<sup>2</sup>, T O'Brien<sup>2</sup> and MJ Kerin<sup>1</sup>

**Title:** Potential Role of Mesenchymal Stem Cells (MSCs) in the Breast Tumor Microenvironment: Stimulation of Epithelial to Mesenchymal Transition (EMT)

**Authors Affiliations:** Department of Surgery<sup>1</sup>, Regenerative Medicine Institute and Department of Medicine<sup>2</sup>, and Department of Anatomy<sup>3</sup>, National University of Ireland Galway, Ireland.

**Corresponding Author:** Roisin M. Dwyer, Department of Surgery, National University of Ireland Galway, Ireland.

E-mail: [roisin.dwyer@nuigalway.ie](mailto:roisin.dwyer@nuigalway.ie)

1  
2  
3  
4 **Abstract**  
5

6 Bone marrow derived Mesenchymal Stem Cells (MSCs) are known to specifically  
7 migrate to and engraft at tumor sites. Understanding interactions between cancer cells  
8 and MSCs has become fundamental to determining whether MSC-tumour interactions  
9 should be harnessed for delivery of therapeutic agents or considered a target for  
10 intervention. Breast Cancer Cell lines (MDA-MB-231, T47D & SK-Br3) were cultured  
11 alone or on a monolayer of MSCs, and retrieved using epithelial specific magnetic beads.  
12 Alterations in expression of 90 genes associated with breast tumorigenicity were analyzed  
13 using low density array. Expression of markers of Epithelial-Mesenchymal transition and  
14 array results were validated using RQ-PCR. Co-cultured cells were analyzed for changes  
15 in protein expression, growth pattern, and morphology. Gene expression and proliferation  
16 assays were also performed on indirect co-cultures. Following direct co-culture with  
17 MSCs, breast cancer cells expressed elevated levels of oncogenes (NCOA4, FOS), proto-  
18 oncogenes (FYN, JUN), genes associated with invasion (MMP11), angiogenesis (VEGF)  
19 and anti-apoptosis (IGF1R, BCL2). However, universal downregulation of genes  
20 associated with proliferation was observed (Ki67, MYBL2), and reflected in reduced  
21 ATP production in response to MSC-secreted factors. Significant upregulation of  
22 Epithelial-Mesenchymal Transition specific markers (N-cadherin, Vimentin, Twist and  
23 Snail) was also observed following co-culture with MSCs, with a reciprocal  
24 downregulation in E-cadherin protein expression. These changes were predominantly cell  
25 contact mediated and appeared to be MSC specific. Breast cancer cell morphology and  
26 growth pattern also altered in response to MSCs. Mesenchymal Stem Cells may promote  
27 breast cancer metastasis through facilitation of Epithelial-Mesenchymal Transition.  
28  
29  
30  
31  
32  
33  
34  
35  
36  
37  
38  
39  
40  
41  
42  
43  
44  
45  
46  
47

48 **Keywords:** Mesenchymal Stem Cells (MSCs), Breast Cancer, Epithelial-Mesenchymal  
49 Transition (EMT), Invasion, Co-culture  
50  
51  
52  
53  
54  
55  
56  
57  
58  
59  
60  
61  
62  
63  
64  
65

1  
2  
3  
4 **Introduction**  
5

6 Breast cancer remains the most common malignancy in women, accounting for one  
7 quarter of all female cancers [1]. The preferential spread of tumour cells to bone and  
8 subsequent development of osteolytic metastatic deposits remains a devastating event in  
9 the course of the disease [2, 3]. It is now understood that tumour epithelial cells develop  
10 in a symbiotic rather than an independent manner with surrounding stroma. This stromal  
11 environment consists of a dynamic network of immune cells, fibroblasts, tumour  
12 vasculature and extracellular matrix [4]. Tumours actively recruit cells, including bone  
13 marrow derived mesenchymal stem cells (MSCs), into the tumour microenvironment and  
14 these cells may play a role in facilitating cancer progression [5]. MSCs are a subset of  
15 non-haematopoietic cells found within the bone marrow stroma that have an innate ability  
16 both to self renew and to differentiate into cells of multiple lineages, including  
17 osteoblasts, chondrocytes and adipocytes [6]. They have also been seen to influence the  
18 morphology and proliferation of cells within their vicinity through both cell to cell  
19 interactions and the secretion of chemoattractant cytokines and paracrine factors [7-10].  
20 Studies assessing systemically delivered MSCs have confirmed that these circulating  
21 cells engraft and facilitate healing at sites of inflammation and injury including head  
22 trauma, stroke and myocardial infarction [10, 11]. Malignancy may also be considered as  
23 a nidus of chronic inflammation or “wound that never heals” [12] and reports have shown  
24 a similar pattern of MSC engraftment at these sites [11]. This tumor homing ability has  
25 prompted researchers to analyse MSCs as possible vectors for the targeted delivery of  
26 anti-cancer agents to tumor microenvironments [13]. However evidence suggests that  
27 interactions between MSCs and breast cancer cells may impact upon the phenotype of the  
28 cancer cell and promote their metastatic potential [7-9, 14-16]. Understanding these  
29 interactions has become fundamental to determining whether the homing ability of MSCs  
30 should be harnessed for delivery of therapeutic agents or whether the MSC-tumour  
31 interactions should be considered a target for intervention.  
32

33  
34  
35  
36  
37  
38  
39  
40  
41  
42  
43  
44  
45  
46  
47  
48  
49  
50  
51  
52  
53  
54  
55  
56  
57  
58  
59  
60  
61  
62  
63  
64  
65  
66  
67  
68  
69  
70  
71  
72  
73  
74  
75  
76  
77  
78  
79  
80  
81  
82  
83  
84  
85  
86  
87  
88  
89  
90  
91  
92  
93  
94  
95  
96  
97  
98  
99  
100  
101  
102  
103  
104  
105  
106  
107  
108  
109  
110  
111  
112  
113  
114  
115  
116  
117  
118  
119  
120  
121  
122  
123  
124  
125  
126  
127  
128  
129  
130  
131  
132  
133  
134  
135  
136  
137  
138  
139  
140  
141  
142  
143  
144  
145  
146  
147  
148  
149  
150  
151  
152  
153  
154  
155  
156  
157  
158  
159  
160  
161  
162  
163  
164  
165  
166  
167  
168  
169  
170  
171  
172  
173  
174  
175  
176  
177  
178  
179  
180  
181  
182  
183  
184  
185  
186  
187  
188  
189  
190  
191  
192  
193  
194  
195  
196  
197  
198  
199  
200  
201  
202  
203  
204  
205  
206  
207  
208  
209  
210  
211  
212  
213  
214  
215  
216  
217  
218  
219  
220  
221  
222  
223  
224  
225  
226  
227  
228  
229  
230  
231  
232  
233  
234  
235  
236  
237  
238  
239  
240  
241  
242  
243  
244  
245  
246  
247  
248  
249  
250  
251  
252  
253  
254  
255  
256  
257  
258  
259  
260  
261  
262  
263  
264  
265  
266  
267  
268  
269  
270  
271  
272  
273  
274  
275  
276  
277  
278  
279  
280  
281  
282  
283  
284  
285  
286  
287  
288  
289  
290  
291  
292  
293  
294  
295  
296  
297  
298  
299  
300  
301  
302  
303  
304  
305  
306  
307  
308  
309  
310  
311  
312  
313  
314  
315  
316  
317  
318  
319  
320  
321  
322  
323  
324  
325  
326  
327  
328  
329  
330  
331  
332  
333  
334  
335  
336  
337  
338  
339  
340  
341  
342  
343  
344  
345  
346  
347  
348  
349  
350  
351  
352  
353  
354  
355  
356  
357  
358  
359  
360  
361  
362  
363  
364  
365  
366  
367  
368  
369  
370  
371  
372  
373  
374  
375  
376  
377  
378  
379  
380  
381  
382  
383  
384  
385  
386  
387  
388  
389  
390  
391  
392  
393  
394  
395  
396  
397  
398  
399  
400  
401  
402  
403  
404  
405  
406  
407  
408  
409  
410  
411  
412  
413  
414  
415  
416  
417  
418  
419  
420  
421  
422  
423  
424  
425  
426  
427  
428  
429  
430  
431  
432  
433  
434  
435  
436  
437  
438  
439  
440  
441  
442  
443  
444  
445  
446  
447  
448  
449  
450  
451  
452  
453  
454  
455  
456  
457  
458  
459  
460  
461  
462  
463  
464  
465  
466  
467  
468  
469  
470  
471  
472  
473  
474  
475  
476  
477  
478  
479  
480  
481  
482  
483  
484  
485  
486  
487  
488  
489  
490  
491  
492  
493  
494  
495  
496  
497  
498  
499  
500  
501  
502  
503  
504  
505  
506  
507  
508  
509  
510  
511  
512  
513  
514  
515  
516  
517  
518  
519  
520  
521  
522  
523  
524  
525  
526  
527  
528  
529  
530  
531  
532  
533  
534  
535  
536  
537  
538  
539  
540  
541  
542  
543  
544  
545  
546  
547  
548  
549  
550  
551  
552  
553  
554  
555  
556  
557  
558  
559  
560  
561  
562  
563  
564  
565  
566  
567  
568  
569  
570  
571  
572  
573  
574  
575  
576  
577  
578  
579  
580  
581  
582  
583  
584  
585  
586  
587  
588  
589  
590  
591  
592  
593  
594  
595  
596  
597  
598  
599  
600  
601  
602  
603  
604  
605  
606  
607  
608  
609  
610  
611  
612  
613  
614  
615  
616  
617  
618  
619  
620  
621  
622  
623  
624  
625  
626  
627  
628  
629  
630  
631  
632  
633  
634  
635  
636  
637  
638  
639  
640  
641  
642  
643  
644  
645  
646  
647  
648  
649  
650  
651  
652  
653  
654  
655  
656  
657  
658  
659  
660  
661  
662  
663  
664  
665  
666  
667  
668  
669  
670  
671  
672  
673  
674  
675  
676  
677  
678  
679  
680  
681  
682  
683  
684  
685  
686  
687  
688  
689  
690  
691  
692  
693  
694  
695  
696  
697  
698  
699  
700  
701  
702  
703  
704  
705  
706  
707  
708  
709  
710  
711  
712  
713  
714  
715  
716  
717  
718  
719  
720  
721  
722  
723  
724  
725  
726  
727  
728  
729  
730  
731  
732  
733  
734  
735  
736  
737  
738  
739  
740  
741  
742  
743  
744  
745  
746  
747  
748  
749  
750  
751  
752  
753  
754  
755  
756  
757  
758  
759  
760  
761  
762  
763  
764  
765  
766  
767  
768  
769  
770  
771  
772  
773  
774  
775  
776  
777  
778  
779  
780  
781  
782  
783  
784  
785  
786  
787  
788  
789  
790  
791  
792  
793  
794  
795  
796  
797  
798  
799  
800  
801  
802  
803  
804  
805  
806  
807  
808  
809  
810  
811  
812  
813  
814  
815  
816  
817  
818  
819  
820  
821  
822  
823  
824  
825  
826  
827  
828  
829  
830  
831  
832  
833  
834  
835  
836  
837  
838  
839  
840  
841  
842  
843  
844  
845  
846  
847  
848  
849  
850  
851  
852  
853  
854  
855  
856  
857  
858  
859  
860  
861  
862  
863  
864  
865  
866  
867  
868  
869  
870  
871  
872  
873  
874  
875  
876  
877  
878  
879  
880  
881  
882  
883  
884  
885  
886  
887  
888  
889  
890  
891  
892  
893  
894  
895  
896  
897  
898  
899  
900  
901  
902  
903  
904  
905  
906  
907  
908  
909  
910  
911  
912  
913  
914  
915  
916  
917  
918  
919  
920  
921  
922  
923  
924  
925  
926  
927  
928  
929  
930  
931  
932  
933  
934  
935  
936  
937  
938  
939  
940  
941  
942  
943  
944  
945  
946  
947  
948  
949  
950  
951  
952  
953  
954  
955  
956  
957  
958  
959  
960  
961  
962  
963  
964  
965  
966  
967  
968  
969  
970  
971  
972  
973  
974  
975  
976  
977  
978  
979  
980  
981  
982  
983  
984  
985  
986  
987  
988  
989  
990  
991  
992  
993  
994  
995  
996  
997  
998  
999  
1000

1  
2  
3  
4 cell adhesion molecules E-cadherin and Epithelial Specific Antigen (ESA) [7, 8].  
5  
6 Conflicting reports exist with relation to the effect of MSCs on proliferation of breast  
7  
8 cancer cells, with some studies reporting no change [7] and others suggesting  
9  
10 proliferative changes occurring in an estrogen dependant manner [8, 9].

11  
12 More recently a pivotal study by Karnoub et al [14] reported that, when mixed with  
13  
14 breast cancer cells prior to implantation, MSCs enhance breast cancer cell motility,  
15  
16 invasion and metastatic potential in vivo. Knockdown of the CCL5–CCR5 loop led to an  
17  
18 abrogated metastatic response confirming that these paracrine interactions play an  
19  
20 important role in MSC-mediated metastatic spread [14]. These studies highlight the  
21  
22 distinct effect that MSCs have on breast cancer cells, and thus understanding the  
23  
24 pathways governing these effects remains imperative.

25  
26 Epithelial to Mesenchymal Transition (EMT) is a process essential to organogenesis  
27  
28 during embryonic development [17], however its reactivation during adult life has been  
29  
30 ascribed to certain pathological processes including the facilitation of carcinogenesis  
31  
32 [18]. EMT has been shown to promote the detachment of cancer cells from the primary  
33  
34 tumour and facilitate their subsequent migration through the acquisition of stem like  
35  
36 properties, including a loss of cellular polarity, adhesion and proliferation [18, 19].  
37  
38 Studies have demonstrated evidence of EMT in primary human breast carcinomas  
39  
40 showing a proclivity toward the more invasive basal breast cancer phenotype [20, 21].  
41  
42 Despite recognition of the role EMT plays in the metastatic cascade, stimuli inducing  
43  
44 EMT at the primary tumour site remain largely unknown.

45  
46 Further understanding of MSC/tumour cell interactions is required to determine their role  
47  
48 in breast cancer progression or therapy. This study aimed to further elucidate the effect  
49  
50 MSCs have on breast cancer cells and to potentially identify pathways mediating these  
51  
52 effects.

## 53 **Materials and Methods**

### 54 *Cell Culture*

55  
56 Breast cancer cell lines included MDA-MB-231 cells cultured in Liebowitz-15 medium  
57  
58 (L-15); T47D cells cultured in RPMI 1640 medium; and SK-Br-3 cells cultured in  
59  
60 McCoys-5a medium. Normal human embryonic lung fibroblasts (WI-38 cells) were  
61  
62  
63  
64  
65

1  
2  
3  
4 cultured in Eagle's minimal essential medium (EMEM). All media were supplemented  
5 with 10% Fetal Bovine Serum (FBS), 100 IU/ml Penicillin /100µg/ml Streptomycin (P/S)  
6 and 1% L-glutamine.  
7

8  
9 Mesenchymal Stem Cell (MSCs) were supplied by the Regenerative Medicine Institute  
10 (REMEDI) at NUI Galway. With ethical approval and informed consent, bone marrow  
11 was aspirated from the iliac crests of healthy donors following a defined clinical protocol  
12 [22]. MSCs were isolated from the marrow aspirates by direct plating and subsequently  
13 cultured for 12-15 days to deplete the non-adherent haematopoietic cell fraction. Cells  
14 were maintained in Dulbecco's Modified Eagle's Medium (DMEM) supplemented with  
15 pre-selected FBS (10%) and P/S. The ability of MSCs to differentiate into chondrocytes,  
16 adipocytes and osteoblasts was confirmed prior to use. Characterization of surface  
17 receptors was performed targeting the markers CD105, CD73, CD90 (positive) and  
18 CD34, CD45 (negative). MSCs derived from three separate donors were utilised for  
19 experiments. All cells were maintained at 37°C and 5% CO<sub>2</sub>.  
20  
21  
22  
23  
24  
25  
26  
27  
28  
29  
30

31  
32 *Direct Co-Culture:* Primary MSCs or normal fibroblasts (WI-38 cells) were seeded at a  
33 density of  $2 \times 10^4$  cells/cm<sup>2</sup> and allowed to adhere overnight. Breast cancer cell lines were  
34 then seeded at a density of  $1.3 \times 10^4$  cells/cm<sup>2</sup> onto the monolayers of MSCs or normal  
35 fibroblasts. All cell types were cultured individually in parallel as controls. Cells were  
36 maintained in MSC specific medium and following a 3 or 7 day incubation, media was  
37 harvested and epithelial cells retrieved as described below.  
38  
39  
40  
41  
42  
43

44  
45 *Retrieval of Epithelial Cells:* Following direct co-culture epithelial cells were separated  
46 from MSCs in co-culture using an EasySep<sup>®</sup> positive selection kit (Stem Cell  
47 Technologies). As per manufacturer's instructions, co-culture populations were  
48 trypsinized and dispersed into a single cell suspension, and EasySep<sup>®</sup> positive selection  
49 cocktail and magnetic nanoparticles were added during serial incubations on ice. The  
50 magnetic nanoparticles bind selectively to viable epithelial cells which are positively  
51 selected by placing the tube in a magnet. Retrieved cells were centrifuged and stored at -  
52 80°C until required for RNA extraction.  
53  
54  
55  
56  
57  
58  
59  
60  
61  
62  
63  
64  
65

1  
2  
3  
4 *Gene Expression:* RNA was extracted from both cells cultured alone and epithelial cells  
5 retrieved following co-culture with MSCs or WI-38 cells using the RNeasy<sup>®</sup> Mini Kit  
6 (QIAGEN Ltd.) following manufacturer's protocol. cDNA was generated using  
7 SuperScript III reverse transcription enzyme and analyzed by both Taqman<sup>®</sup> Low-  
8 Density array (TLDA) and relative quantitative-PCR (RQ-PCR). The array plate was  
9 designed to simultaneously measure expression of 90 genes specifically associated with  
10 breast cancer tumorigenicity and 6 endogenous controls. Following identification of target  
11 genes of interest, co-culture experiments were repeated in triplicate and results validated  
12 by RQ-PCR using the ABI Prism 7000 sequence detector system (Applied Biosystems).  
13 PreDeveloped Taqman<sup>®</sup> Assay Reagents (PDARS) specific to genes associated with  
14 EMT, including N-cadherin, Vimentin, Twist and Snail, were also used to quantify  
15 changes in expression by RQ-PCR. The comparative C<sub>T</sub> method was used to quantify  
16 expression of genes and this was normalized to the endogenous control, Peptidyl-Prolyl  
17 Isomerase A (PPIA). Results from cells retrieved from co-culture were expressed relative  
18 to the same cells cultured alone. Changes in gene expression were expressed using the 2<sup>-</sup>  
19  $\Delta\Delta C_T$  method [23] and the fold change in triplicate experiments was recorded and  
20 presented as Mean  $\pm$  SEM.  
21  
22  
23  
24  
25  
26  
27  
28  
29  
30  
31  
32  
33  
34  
35  
36

37 *Collection of Conditioned Media (CM) for indirect co-culture:* MSCs were seeded at a  
38 density of 2 x 10<sup>4</sup> cells/cm<sup>2</sup> in DMEM supplemented with pre-selected FBS (10%) and  
39 P/S. Media was aspirated at 24hr intervals and transferred to breast cancer cells lines to  
40 determine the effect of MSC secreted factors on cell proliferation and gene expression  
41 (indirect co-culture) as described below. Breast cancer cells grown in MSC medium that  
42 had not been exposed to MSCs served as a control.  
43  
44  
45  
46  
47  
48  
49

50 *Proliferation Assay:* Breast cancer cell lines were seeded onto 96 well white walled  
51 plates at a density of 8 x 10<sup>3</sup> cells/well in 100 $\mu$ l media and allowed to adhere overnight.  
52 Media was aspirated and replaced with MSC-conditioned medium (CM) as described  
53 above at 24hr intervals for 72hrs. An Apoglow<sup>®</sup> assay was performed to assess changes  
54 in proliferation based on the level of ATP production as quantified by a luminometer.  
55 Results presented represent triplicate experiments and are expressed as Mean  $\pm$  SEM.  
56  
57  
58  
59  
60  
61  
62  
63  
64  
65

1  
2  
3  
4  
5  
6 *Indirect co-culture:* Breast cancer cells were cultured in media that had been exposed to  
7 MSCs as described above. Following culture in MSC CM, cells were lysed and RNA  
8 extracted. Changes in expression of genes associated with EMT were quantified by RQ-  
9 PCR as described for the direct co-culture experiments.  
10  
11  
12  
13  
14

15 *Western Blot Analysis.* Protein was extracted from cells cultured individually and those  
16 retrieved following co-culture. Briefly, cells were washed and resuspended in Triton-X  
17 lysis buffer [150mM NaCl, 20 mM HEPES, 2 mM EDTA, 1% Triton-X100, 2mM  
18 Sodium Orthovanadate, 10mM Sodium Fluoride, 10ul/mL Protease inhibitor cocktail  
19 (Fisher Scientific)], frozen at  $-20^{\circ}\text{C}$  and then centrifuged at  $500 \times g$  for 15 mins at  $4^{\circ}\text{C}$   
20 to remove cellular debris. The protein content was determined using the Micro BCA™  
21 Protein Assay Kit (Thermo Scientific). Protein (40  $\mu\text{g}$ ) was reduced in DTT (0.5 M) for  
22 10 mins at  $70^{\circ}\text{C}$  and samples run on a 4-12% gradient pre-cast NuPAGE Bis-Tris  
23 polyacrylamide gel for 1 hr at 200V. Protein molecular weight standards (20-220 kDa)  
24 were run simultaneously on each gel. Electroblothing was performed for 1hr at 25V to  
25 transfer protein samples to a nitrocellulose membrane. Blots were blocked in 5% milk in  
26 TBS-T [20 mM Tris, 137 mM NaCl, 0.1% Tween-20] for 1 hr, and probed with  
27 antibodies targeting E-cadherin (1 $\mu\text{g}/\text{mL}$ , R & D Systems), Vimentin (1:100, Abcam), or  
28 Snail (1 $\mu\text{g}/\text{mL}$ , Abcam) for 1.5 hrs and washed in TBS-T.  $\beta$ -actin was used to confirm  
29 equal loading in wells. Horseradish peroxidase labelled goat anti-rabbit (1:3,000; Abcam)  
30 or rabbit anti-mouse antibody (1:2,000; Abcam) was then added to the membranes for 1.5  
31 hrs. Following washing steps, SuperSignal West Pico Chemiluminescent substrate  
32 (Thermo Scientific) was applied to the membranes for 5min. Images were captured using  
33 a Syngene G-Box and GeneSnap software.  
34  
35  
36  
37  
38  
39  
40  
41  
42  
43  
44  
45  
46  
47  
48  
49  
50

51 *Immunohistochemistry & Fluorescent Microscopy:* After 72hrs co-culture in chamber  
52 slides, cells were fixed in methanol. Immunohistochemical analysis was performed using  
53 monoclonal antibodies targeting E-cadherin (R&D Systems), MNF116 pancytokeratin  
54 (Dako, Denmark) and CD90 (Dako, Denmark). E-cadherin and CD90 were visualized  
55  
56  
57  
58  
59  
60  
61  
62  
63  
64  
65

1  
2  
3  
4 using the chromagen 3,3'- Diaminobenzidine (DAB), with Acid fast red (RED) used for  
5 detection of pancytokeratin in dual staining experiments.  
6

7  
8 To assess changes in breast cancer cell morphology in response to MSCs, cells were dual  
9 labelled and examined by fluorescence microscopy. Prior to mixing the cell populations,  
10 epithelial breast cancer cells were labelled with PKH26 (red fluorescent label, Excitation  
11 551nm, Emmission 567nm, Sigma). Following 72hrs co-culture, cells were fixed in 4%  
12 paraformaldehyde and the cytoskeleton of the mixed populations was labelled with  
13 Alexafluor<sup>®</sup> 488 phalloidin (green fluorescent label, Excitation 495nm, Emmission  
14 518nm, Invitrogen, Eugene, OR). Cells were examined using an Olympus IX81-ZDC<sup>®</sup>  
15 microscope and Confocal Andor Revolution spinning disc system<sup>®</sup>.  
16  
17  
18  
19  
20  
21  
22  
23

## 24 **Results**

25  
26 *Cell Separation:* Cell separation using the EasySep<sup>®</sup> positive selection kit (Stem Cell  
27 Technologies) was assessed. Following two washes, a positive retrieval rate of  $94.4 \pm$   
28  $1.1\%$  was achieved (range 92 - 97.5% retrieval). It has previously been shown in an  
29 extensive study by Woelfle et al. [24], that the immunoselection procedure does not alter  
30 breast cancer cell gene expression. To further confirm this, expression of Vimentin, E-  
31 cadherin, CXCL12 and CXCR4 in breast cancer cells selected with beads, was compared  
32 to unselected cells with a <1-fold change in gene expression detected.  
33  
34  
35  
36  
37  
38  
39

40  
41 *Analysis of Gene Expression:* Low density array analysis of 90 genes associated with  
42 breast cancer tumorigenicity was performed on all breast cancer cell lines retrieved  
43 following 72hrs co-culture with MSCs, relative to the same cells cultured alone. Any  
44 change >2.5 fold is presented (*Table 1*). Upregulation of oncogenes, proto-oncogenes and  
45 genes associated with angiogenesis, anti-apoptosis and invasion was observed. A range of  
46 genes exhibited greater than 10 fold upregulation (FOS, FYN, MET, VEGF, CD68 and  
47 MMP11) while others were upregulated over 1,000 fold (CAV-1, TGF $\beta$ R2 and  
48 CXCL12). However down-regulation of genes associated with proliferation (Ki67,  
49 CCNE1 and MYBL2) was recorded across all breast cancer cells following co-culture  
50 with MSCs.  
51  
52  
53  
54  
55  
56  
57  
58  
59  
60  
61  
62  
63  
64  
65

1  
2  
3  
4 Observed changes in specific genes of interest were validated in triplicate experiments  
5 using RQ-PCR (Figure 1). Significant upregulation of the chemokine, CXCL12, was  
6 observed in SK-Br3 cells ( $9,949 \pm 4,787$  fold,  $p < 0.05$ ) following co-culture with a  
7 reciprocal downregulation in its cognate receptor CXCR4 ( $3 \pm 1$  fold). In MDA-MB-231  
8 cells, CXCL12 expression was significantly increased ( $17,066 \pm 1,109$  fold) whereas  
9 T47D cells exhibited upregulation of its receptor, CXCR4 ( $6 \pm 2$  fold,  $p < 0.05$ ). The  
10 proliferation marker, Ki-67, was downregulated in all breast cancer cells (Range: 2 – 4  
11 fold decrease, T47D  $p < 0.05$ ), while the invasive marker, MMP11, was significantly  
12 upregulated.  
13  
14  
15  
16  
17  
18  
19  
20  
21

22 *Cell Proliferation in response to MSC secreted factors:* Breast cancer cells were cultured  
23 in the presence of MSC CM for 72 hours after which ATP levels were quantified using a  
24 luminometer based Apoglow<sup>®</sup> Assay (Figure 2). There was a significant reduction in  
25 proliferation observed in all three breast cancer cell lines cultured in the presence of  
26 factors secreted by MSCs (SK-Br-3  $p < 0.05$ ; T47D and MDA-MB-231  $p < 0.001$ ).  
27  
28  
29  
30  
31  
32

33 *Expression of markers associated with EMT:* Significant upregulation in defined markers  
34 of EMT were observed in both SK-Br3 and T47D cells retrieved following 72hrs co-  
35 culture with MSCs (Figure 3a). Due to the magnitude of the increases seen, results are  
36 expressed as  $\text{Log}_{10}$  values. Upregulation of most EMT markers in the MDA-MB-231 cell  
37 line occurred to a lesser degree: Vimentin (3 fold), Snail (5 fold), N-cadherin (50 fold),  
38 while Twist expression increased  $>10,000$  fold. To determine whether the effects seen  
39 were transient, T47D and Sk-Br3 cells were also retrieved following 7 days direct co-  
40 culture with MSCs. In the case of the T47D cells, a significant increase in Vimentin (244-  
41 fold) and Snail (5-fold) was still detected, while Twist and N-cadherin had returned to  
42 baseline. At Day 7 the SK-Br3 cells retained increased expression of N-cadherin (28-  
43 fold), Vimentin (153-fold ) and Snail (10-fold).  
44  
45  
46  
47  
48  
49  
50  
51  
52

53 To determine whether the changes in gene expression were detected at the protein level,  
54 protein was extracted from cells cultured individually and those retrieved following co-  
55 culture. Lysates were then subjected to western blot using antibodies directed against  
56 Vimentin, Snail (Figure 3b) and E-cadherin (Figure 5c). To confirm that differences seen  
57  
58  
59  
60  
61  
62  
63  
64  
65

1  
2  
3  
4 were not as a result of variation in protein sample,  $\beta$ -actin was also targeted and found to  
5 be at similar levels in all samples. Increased expression of Vimentin and Snail protein  
6 was detected in both Sk-Br3 and T47D protein lysates harvested from cells retrieved  
7 following direct co-culture with MSCs (Figure 3b).  
8  
9

10  
11 Overall the greatest increase in all EMT markers examined was seen in Sk-Br3 cells. To  
12 determine whether this was an MSC specific effect, SK-Br3 cells were cultured directly  
13 on a confluent monolayer of normal fibroblasts (WI-38 cells). No significant change in  
14 expression of genes associated with EMT was observed following co-culture with WI-38  
15 cells. Mesenchymal markers N-cadherin and Vimentin were downregulated 1.5 and 2.1  
16 fold respectively, with expression of the transcription factors Twist and Snail both  
17 decreased by 1.5 and 1.4 fold respectively (results not shown).  
18  
19  
20  
21  
22  
23  
24  
25

26 *Expression of EMT markers following indirect co-culture:* To determine whether results  
27 observed were due to cell contact mediated effects, breast cancer cells were exposed to  
28 MSC conditioned medium and changes in expression of the same EMT markers were  
29 analysed (Figure 4). In T47D and SK-Br3 cells, a small increase in expression of Twist  
30 and Snail was observed (range 1 - 2 fold and 4 - 7 fold respectively). A greater  
31 upregulation was seen in N-cadherin (range 9 - 32 fold) with the most marked increase  
32 observed in vimentin expression (range 158 - 276 fold). Although the changes in  
33 expression were significant ( $p < 0.05$ ) for Snail, Twist and Vimentin, the increase was  
34 considerably lower than that seen in the same cells following direct co-culture with  
35 MSCs (Figure 3). When the length of exposure to MSC secreted factors was increased to  
36 7 days, levels of target expression had returned to baseline ( $< 2$ -fold change in gene  
37 expression compared to cells cultured in standard medium). No change in expression of  
38 EMT markers was observed in MDA-MB-231 cells following indirect co-culture (results  
39 not shown).  
40  
41  
42  
43  
44  
45  
46  
47  
48  
49  
50  
51

52  
53 *Immunohistochemistry:* Breast cancer cells and MSCs cultured individually and in co-  
54 culture were stained with cell type specific antibodies to distinguish populations and  
55 analyse changes in morphology and growth pattern. Changes in E-cadherin protein  
56 expression were also examined. E-cadherin has strong membrane targeted expression in  
57  
58  
59  
60  
61  
62  
63  
64  
65

1  
2  
3  
4 T47D cells (Figure 5a), while MSCs have no detectable expression. When T47D cells  
5 were cultured on a monolayer of MSCs a marked decrease was observed in the intensity  
6 of E-cadherin staining (Figure 5b). E-cadherin expression was particularly reduced at  
7 junctions where T47D cells were in direct contact with the MSCs (indicated by arrows)  
8 compared with cells located within a cluster of breast cancer cells. This change in E-  
9 cadherin protein expression was confirmed by western blot of T47D protein lysates  
10 harvested from cells cultured individually, and those retrieved following co-culture  
11 (Figure 5c).  
12  
13  
14  
15  
16  
17  
18

19 *Dual Staining:* Breast cancer cells (MDA-MB-231) cultured alone stained positive for the  
20 epithelial specific cytokeratin, MNF116 (red), with nuclei counterstained with  
21 haematoxylin (blue), and grew in a typical random asymmetric pattern (Figure 5d).  
22 Stromal cells (MSCs) staining positive for CD90 grew in a symmetrical pattern with a  
23 typical parallel alignment of spindle shaped cells when cultured alone. When cultured on  
24 a monolayer of MSCs, MDA-MB-231 cells altered their growth pattern from the random  
25 cellular distribution observed to align in parallel with adjacent MSCs (Figure 5e)  
26 reflecting a change in cellular polarity.  
27  
28  
29  
30  
31  
32

33 *Confocal Fluorescent Microscopy:* PKH26 labelled (red) T47D cells when cultured alone  
34 were seen to grow in a typical clustered growth pattern, with the Alexafluor labelled cell  
35 cytoskeleton (green) seen to be non-branching and closely adherent to the nuclei (Figure  
36 5f). These same cells, when co-cultured directly on a monolayer of MSCs, appeared to  
37 lose cellular adhesion leading to a more dispersed single cell distribution. Furthermore,  
38 the breast cancer cell cytoskeleton was more branching and elongated (indicated by  
39 arrows), and appeared to polarize in the direction of adjacent Mesenchymal Stem cells  
40 (Figure 5g).  
41  
42  
43  
44  
45  
46  
47  
48  
49

## 50 **Discussion**

51 Mesenchymal Stem Cells have been reported to interact with breast cancer cells that have  
52 metastasised to bone marrow [25] as well as being actively recruited to the primary  
53 tumour stromal interface [15]. This tumour homing quality has prompted investigators to  
54 assess MSCs as possible delivery vectors for anti-cancer therapies [13]. To realise their  
55  
56  
57  
58  
59  
60  
61  
62  
63  
64  
65

1  
2  
3  
4 therapeutic potential, interactions between MSCs and breast cancer cells must be fully  
5 elucidated.  
6

7  
8 Studies have previously analysed breast cancer cells and MSCs in direct co-culture noting  
9 specific morphological and phenotypical alterations in the breast cancer cells [7-9, 14].  
10 However isolation of the cells following co-culture and analysis of changes in gene  
11 expression has not previously been assessed. Immunomagnetic selection targeting  
12 antigens such as EpCAM is used to capture circulating tumor cells or enrich tumor cells  
13 from mixed cell samples. The immunomagnetic enrichment technique itself has  
14 previously been shown to have no significant effect on the gene expression profile of  
15 breast cancer cells [24].  
16  
17

18 Reports from this laboratory and others have shown a significant increase in migration of  
19 breast cancer cells in response to factors secreted by MSCs [25, 26], and this was  
20 reflected by increased expression of migratory genes seen here including MMP11 and  
21 CXCL12 [27]. Oncogenes and proto-oncogenes were upregulated both in a cell specific  
22 manner and, in the case of FOS and JUN, across all breast cancer cells retrieved  
23 following co-culture with MSCs. FOS and JUN are both major components of the  
24 activator protein-1 (AP-1) transcription factor complex which has been shown to  
25 positively regulate cellular motility and migration [28].  
26  
27

28 CAV-1 is now considered a marker of poor prognosis with up-regulation correlated to  
29 increased cellular dissemination and cell survival [29]. CAV-1 has been shown to  
30 mediate its anti-apoptotic properties through upregulation of IGF-1R which was also  
31 elevated in the cells following co-culture with MSCs. Interestingly a universal  
32 downregulation of genes associated with proliferation (Ki-67, MYBL2, CCNE1) was  
33 observed in all breast cancer cells retrieved from co-culture. Subsequent analysis of ATP  
34 production by breast cancer cells in the presence of MSC secreted factors (indirect co-  
35 culture), revealed a significant reduction in proliferation of all cancer cells. These results  
36 concur with those of Hombauer and Minguell [7] who noted no increase in proliferative  
37 activity when MCF-7 cells were grown alone or on a monolayer of MSCs.  
38  
39

40 The apparent promotion of oncogenes and genes associated with invasion and migration  
41 with an inhibition of proliferation fits a profile seen in EMT [18, 19]. In order to further  
42 investigate whether MSCs were exerting their effects through induction of EMT, a  
43  
44  
45  
46  
47  
48  
49  
50  
51  
52  
53  
54  
55  
56  
57  
58  
59  
60  
61  
62  
63  
64  
65

1  
2  
3  
4 number of specific genetic markers of EMT were examined in breast cancer cells  
5 following co-culture. Anti-apoptotic transcription factors, Twist and Snail, and  
6 mesenchymal protein markers, Vimentin and N-cadherin have been consistently  
7 associated with mesenchymal transition in epithelial cells [21, 30]. Vimentin upregulation  
8 is commonly observed in more invasive basal cancer subtypes and has been positively  
9 correlated with poor prognosis in breast cancer patients [31]. Interestingly, Vimentin was  
10 upregulated in both T47D and SK-Br-3 cells with no significant upregulation in the  
11 MDA-MB-231 breast cancer population. This may be due to the relatively high  
12 expression of Vimentin already present in the more invasive MDA-MB-231 cells [32].  
13 This upregulation in Vimentin was confirmed at the protein level, and also detected  
14 following 7days of in vitro co-culture. Significant upregulation of N-cadherin, Twist and  
15 Snail was recorded across all breast cancer cells retrieved from co-culture with MSCs  
16 although to a lesser extent in the MDA-MB-231 cells. This proportional difference in  
17 EMT changes recorded between MDA-MB-231 cells and other less invasive breast  
18 cancer subtypes coincides with findings recorded by Karnoub et al [14] who noted that  
19 MDA-MB-231 cells exist in a state of “partial EMT” and that, within their study, CCL5  
20 secreted by MSCs did not lead to advancement of this EMT phenotype.

21  
22 Further analysis of array data confirmed upregulation of a number of genes associated  
23 with EMT induction including TGF $\beta$ R2 [33] and ACVR1 [34], both receptors for TGF $\beta$ ,  
24 which is known to stimulate mesenchymal transition in epithelial cells [35]. Research  
25 suggests that upregulated expression of TGF $\beta$ R2 is an absolute requirement for TGF $\beta$   
26 mediated EMT [36]. Vascular endothelial growth factor (VEGF), typically associated  
27 with angiogenesis, was also upregulated. Non-Angiogenic functions of VEGF include  
28 anti-apoptotic and pro-migratory properties [37] as well as an important role in the  
29 initiation of EMT through upregulation of Snail expression [38]. EMT appears to be at  
30 least partly dependant on VEGF signalling as studies that have blocked VEGF noted a  
31 proportional decrease in EMT [39].

32  
33 To investigate whether changes seen were specific to MSCs, breast cancer cells were  
34 directly cultured with normal fibroblasts (WI-38 cells), resulting in no significant change  
35 in EMT related gene expression. This suggests the effects observed were MSC specific.  
36 To assess whether changes in gene expression were mediated solely through cell to cell  
37  
38  
39  
40  
41  
42  
43  
44  
45  
46  
47  
48  
49  
50  
51  
52  
53  
54  
55  
56  
57  
58  
59  
60  
61  
62  
63  
64  
65

1  
2  
3  
4 contact, breast cancer cells were also cultured in MSC conditioned medium. No change  
5 in expression of EMT markers was seen in MDA-MB-231 cells exposed to MSC  
6 conditioned medium. Both T47D and SK-Br3 cells exhibited a relatively mild upregulation  
7 in expression of Twist, Snail and N-cadherin, with the most marked increase seen in  
8 Vimentin expression. Although significant, these changes following indirect co-culture  
9 occurred to a much lesser degree than those seen in cells directly cultured with MSCs.  
10 Also, the effects were found to be transient in the indirect co-culture model used, with  
11 gene expression returning to baseline following 7 days of indirect co-culture. This may be  
12 due to cell-contact mediated inhibition of MSC proliferation, and resultant reduction in  
13 secretion of mediating factors. Overall the data suggests that changes in gene expression  
14 observed were predominantly mediated through direct cell to cell contact.

15  
16  
17  
18  
19  
20  
21  
22  
23  
24 Decreased expression of the cell adhesion protein E-cadherin and the resultant cellular  
25 dissociation is another marker consistent with the process of EMT [18]. Previous studies  
26 investigating breast cancer cells directly co-cultured with MSCs have shown a significant  
27 downregulation in E-cadherin protein expression in breast cancer cells [7, 8] an  
28 observation also noted in the current study. Dual staining to distinguish between cell  
29 populations in co-culture also highlighted alterations in morphology and growth patterns  
30 of breast cancer cells. T47D cells appeared to lose adhesiveness and separate from their  
31 normal clustered growth pattern, with cells adjacent to MSCs branching and polarizing  
32 toward the mesenchymal cells. These changes coincide with the loss of apico-basal  
33 polarity seen in cells that undergo EMT [18].

34  
35  
36  
37  
38  
39  
40  
41  
42 Recent literature has significantly advanced our understanding of the pivotal role EMT  
43 plays in the metastatic cascade. Initially regarded with a degree of scepticism,  
44 mesenchymal transition has been observed at the primary tumour site in a cohort of 479  
45 human breast cancer samples and a positive correlation with basal breast cancer  
46 phenotype confirmed [20]. Despite these developments the stimulus inducing EMT at the  
47 primary tumour site remains unknown. The current study suggests that MSCs that are  
48 actively recruited to tumour stromal microenvironments may act as a stimulus to induce  
49 EMT in breast cancer cells and actively increase breast cancer metastatic potential.  
50  
51  
52  
53  
54  
55  
56  
57  
58  
59  
60  
61  
62  
63  
64  
65

1  
2  
3  
4 **Acknowledgements:** This study was supported by funding from the National Breast  
5 Cancer Research Institute (NBCRI), a Royal College of Surgeons in Ireland (RCSI)  
6 Surgical Research Grant (F.T. Martin), a Health Research Board Project Grant (R.M.  
7 Dwyer), and a Science Foundation Ireland CSET award (J.M. Murphy, F.P. Barry and T.  
8 O'Brien).  
9

## 10 11 12 13 14 15 **References**

- 16 1. Jemal A, Siegel R, Ward E et al (2008) Cancer statistics, 2008. *CA Cancer J Clin*  
17 58:71-96.
  - 18 2. Coleman RE, Rubens RD (1987) The clinical course of bone metastases from breast  
19 cancer. *Br J Cancer* 55:61-66.
  - 20 3. Espy DK, Wu XC, Swan J et al (2007) Annual report to the nation on the status of  
21 cancer, 1975-2004, featuring cancer in American Indians and Alaska Natives. *Cancer*  
22 110:2119-2152.
  - 23 4. Bhowmick NA, Moses HL (2005) Tumor-stroma interactions. *Curr Opin Genet Dev*  
24 15:97-101.
  - 25 5. Hu M, Polyak K (2008) Molecular characterisation of the tumour microenvironment in  
26 breast cancer. *Eur J Cancer* 44:2760-2765.
  - 27 6. Pittenger MF, Mackay AM, Beck SC et al (1999) Multilineage potential of adult  
28 human mesenchymal stem cells. *Science* 284:143-147.
  - 29 7. Hombauer H, Minguell JJ (2000) Selective interactions between epithelial tumour cells  
30 and bone marrow mesenchymal stem cells. *Br J Cancer* 82:1290-1296.
  - 31 8. Fierro FA, Sierralta WD, Epanan MJ et al (2004) Marrow-derived mesenchymal stem  
32 cells: role in epithelial tumor cell determination. *Clin Exp Metastasis* 21:313-319.
  - 33 9. Sasser AK, Mundy BL, Smith KM et al (2007) Human bone marrow stromal cells  
34 enhance breast cancer cell growth rates in a cell line-dependent manner when evaluated  
35 in 3D tumor environments. *Cancer Lett* 254:255-264.
  - 36 10. Chen J, Zhang ZG, Li Y et al (2003) Intravenous administration of human bone  
37 marrow stromal cells induces angiogenesis in the ischemic boundary zone after stroke in  
38 rats. *Circ Res* 92:692-699.
  - 39 11. Spaeth E, Klopp A, Dembinski J et al (2008) Inflammation and tumor  
40 microenvironments: defining the migratory itinerary of mesenchymal stem cells. *Gene*  
41 *Ther* 15:730-738.
- 42  
43  
44  
45  
46  
47  
48  
49  
50  
51  
52  
53  
54  
55  
56  
57  
58  
59  
60  
61  
62  
63  
64  
65

12. Dvorak HF (1986) Tumors: wounds that do not heal. Similarities between tumor stroma generation and wound healing. *N Engl J Med* 315:1650-1659.
13. Kumar S, Chanda D, Ponnazhagan S (2008) Therapeutic potential of genetically modified mesenchymal stem cells. *Gene Ther* 15:711-715.
14. Karnoub AE, Dash AB, Vo AP et al (2007) Mesenchymal stem cells within tumour stroma promote breast cancer metastasis. *Nature* 449:557-563.
15. Dwyer RM, Potter-Beirne SM, Harrington KA et al (2007) Monocyte Chemoattractant Protein-1 (MCP-1) secreted by primary breast tumors stimulates migration of Mesenchymal Stem Cells (MSCs). *Clin Cancer Res* 13:5020-5027.
16. Molloy AP, Martin FT, Dwyer RM et al (2009) Mesenchymal stem cell secretion of chemokines during differentiation into osteoblasts, and their potential role in mediating interactions with breast cancer cells. *Int J Cancer* 124:326-332.
17. Nakaya Y, Sheng G (2008) Epithelial to mesenchymal transition during gastrulation: an embryological view. *Dev Growth Differ* 50:755-766.
18. Thiery JP, Sleeman JP (2006) Complex networks orchestrate epithelial-mesenchymal transitions. *Nat Rev Mol Cell Biol* 7:131-142.
19. Brabletz T, Jung A, Spaderna S et al (2005) Opinion: migrating cancer stem cells - an integrated concept of malignant tumour progression. *Nat Rev Cancer* 5:744-749.
20. Sarrío D, Rodríguez-Pinilla SM, Hardisson D et al (2008) Epithelial-mesenchymal transition in breast cancer relates to the basal-like phenotype. *Cancer Res* 68:989-997.
21. Mani SA, Guo W, Liao MJ et al (2008) The epithelial-mesenchymal transition generates cells with properties of stem cells. *Cell* 133:704-715.
22. Barry FP, Murphy JM (2004) Mesenchymal stem cells: clinical applications and biological characterization. *International Journal of Biochemistry & Cell Biology* 36:568-584.
23. Livak KJ, Schmittgen TD (2001) Analysis of relative gene expression data using real-time quantitative PCR and the  $2^{-\Delta\Delta C(T)}$  Method. *Methods* 25:402-408.
24. Woelfle U, Breit E, Pantel K (2005) Influence of immunomagnetic enrichment on gene expression of tumor cells. *J Transl Med* 3:12.
25. Corcoran KE, Trzaska KA, Fernandes H et al (2008) Mesenchymal stem cells in early entry of breast cancer into bone marrow. *PLoS ONE* 3:e2563.

- 1  
2  
3  
4  
5  
6  
7  
8  
9  
10  
11  
12  
13  
14  
15  
16  
17  
18  
19  
20  
21  
22  
23  
24  
25  
26  
27  
28  
29  
30  
31  
32  
33  
34  
35  
36  
37  
38  
39  
40  
41  
42  
43  
44  
45  
46  
47  
48  
49  
50  
51  
52  
53  
54  
55  
56  
57  
58  
59  
60  
61  
62  
63  
64  
65
26. Molloy AP, Martin FT, Dwyer RM et al (2008) Mesenchymal stem cell secretion of chemokines during differentiation into osteoblasts, and their potential role in mediating interactions with breast cancer cells. *Int J Cancer*.
  27. Gelmini S, Mangoni M, Serio M et al (2008) The critical role of SDF-1/CXCR4 axis in cancer and cancer stem cells metastasis. *J Endocrinol Invest* 31:809-819.
  28. Eferl R, Wagner EF (2003) AP-1: a double-edged sword in tumorigenesis. *Nat Rev Cancer* 3:859-868.
  29. Pinilla SM, Honrado E, Hardisson D et al (2006) Caveolin-1 expression is associated with a basal-like phenotype in sporadic and hereditary breast cancer. *Breast Cancer Res Treat* 99:85-90.
  30. De Wever O, Pauwels P, De Craene B et al (2008) Molecular and pathological signatures of epithelial-mesenchymal transitions at the cancer invasion front. *Histochem Cell Biol* 130:481-494.
  31. Thomas PA, Kirschmann DA, Cerhan JR et al (1999) Association between keratin and vimentin expression, malignant phenotype, and survival in postmenopausal breast cancer patients. *Clin Cancer Res* 5:2698-2703.
  32. McInroy L, Maatta A (2007) Down-regulation of vimentin expression inhibits carcinoma cell migration and adhesion. *Biochem Biophys Res Commun* 360:109-114.
  33. Galliher AJ, Schiemann WP (2006) Beta3 integrin and Src facilitate transforming growth factor-beta mediated induction of epithelial-mesenchymal transition in mammary epithelial cells. *Breast Cancer Res* 8:R42.
  34. Mercado-Pimentel ME, Runyan RB (2007) Multiple transforming growth factor-beta isoforms and receptors function during epithelial-mesenchymal cell transformation in the embryonic heart. *Cells Tissues Organs* 185:146-156.
  35. Derynck R, Akhurst RJ, Balmain A (2001) TGF-beta signaling in tumor suppression and cancer progression. *Nat Genet* 29:117-129.
  36. Han G, Lu SL, Li AG et al (2005) Distinct mechanisms of TGF-beta1-mediated epithelial-to-mesenchymal transition and metastasis during skin carcinogenesis. *J Clin Invest* 115:1714-1723.
  37. Mercurio AM, Lipscomb EA, Bachelder RE (2005) Non-angiogenic functions of VEGF in breast cancer. *J Mammary Gland Biol Neoplasia* 10:283-290.
  38. Wanami LS, Chen HY, Peiro S et al (2008) Vascular endothelial growth factor-A stimulates Snail expression in breast tumor cells: implications for tumor progression. *Exp Cell Res* 314:2448-2453.

1  
2  
3  
4  
5  
6 39. Enciso JM, Gratzinger D, Camenisch TD et al (2003) Elevated glucose inhibits  
7 VEGF-A-mediated endocardial cushion formation: modulation by PECAM-1 and MMP-  
8 2. J Cell Biol 160:605-615.  
9

10  
11  
12 **Figure legends**  
13

14  
15  
16 **Table 1:** Results from Low Density Array analysis of breast cancer cells retrieved  
17 following co-culture with MSCs. Results presented show genes where at least one cell  
18 line had  $\geq 2.5$  fold increase or decrease in expression following co-culture with MSCs.  
19 \*Genes which were then validated in triplicate experiments by RQ-PCR.  
20  
21  
22  
23

24  
25 **Figure 1:** Change in breast cancer cell gene expression following co-culture with MSCs.  
26 Results presented as Mean  $\pm$  SEM Log<sub>10</sub> Relative Quantity in triplicate experiments. The  
27 baseline represents the level of expression in breast cancer cell lines cultured  
28 individually. \*denotes p<0.05  
29  
30  
31  
32

33  
34 **Figure 2:** Changes in proliferation of breast cancer cells exposed to factors secreted by  
35 MSCs for 72hrs. Cell proliferation was measured using an Apoglow® assay in T47D,  
36 SK-Br3 & MDA-MB-231 cells cultured alone and in MSC conditioned media. Results  
37 presented represent mean of triplicate experiments  $\pm$  SEM. RLU = Relative Light Units  
38 detected on luminometer. \* p<0.05 \*\*p<0.001  
39  
40  
41  
42  
43

44  
45 **Figure 3: (A)** Changes in breast cancer cell expression of specific EMT genes following  
46 co-culture with MSCs. The baseline represents the level of expression in breast cancer  
47 cell lines cultured individually. Results presented represent mean of triplicate  
48 experiments  $\pm$  SEM. \* denotes p<0.05 (B) Protein analysis: Western blot of Sk-Br3 and  
49 T47D cells alone and following direct co-culture with MSCs, targeting Vimentin and  
50 Snail.  $\beta$ -actin was used to confirm uniform sample loading.  
51  
52  
53  
54  
55  
56

57  
58 **Figure 4:** Changes in expression of EMT genes in breast cancer cells following culture in  
59  
60  
61  
62  
63  
64  
65

1  
2  
3  
4 MSC conditioned medium (Indirect co-culture). The baseline represents the level of  
5 expression in breast cancer cell lines cultured in the same medium that had not been  
6 exposed to MSCs. Results presented represent mean of triplicate experiments  $\pm$  SEM. No  
7 change in expression of EMT markers was observed in MDA-MB-231 cells following  
8 indirect co-culture (results not shown).  
9  
10  
11  
12  
13  
14

15 **Figure 5 (a-g):** Immunostaining of breast cancer cells and MSCs cultured individually  
16 and in direct co-culture on chamber slides for 72hrs.  
17

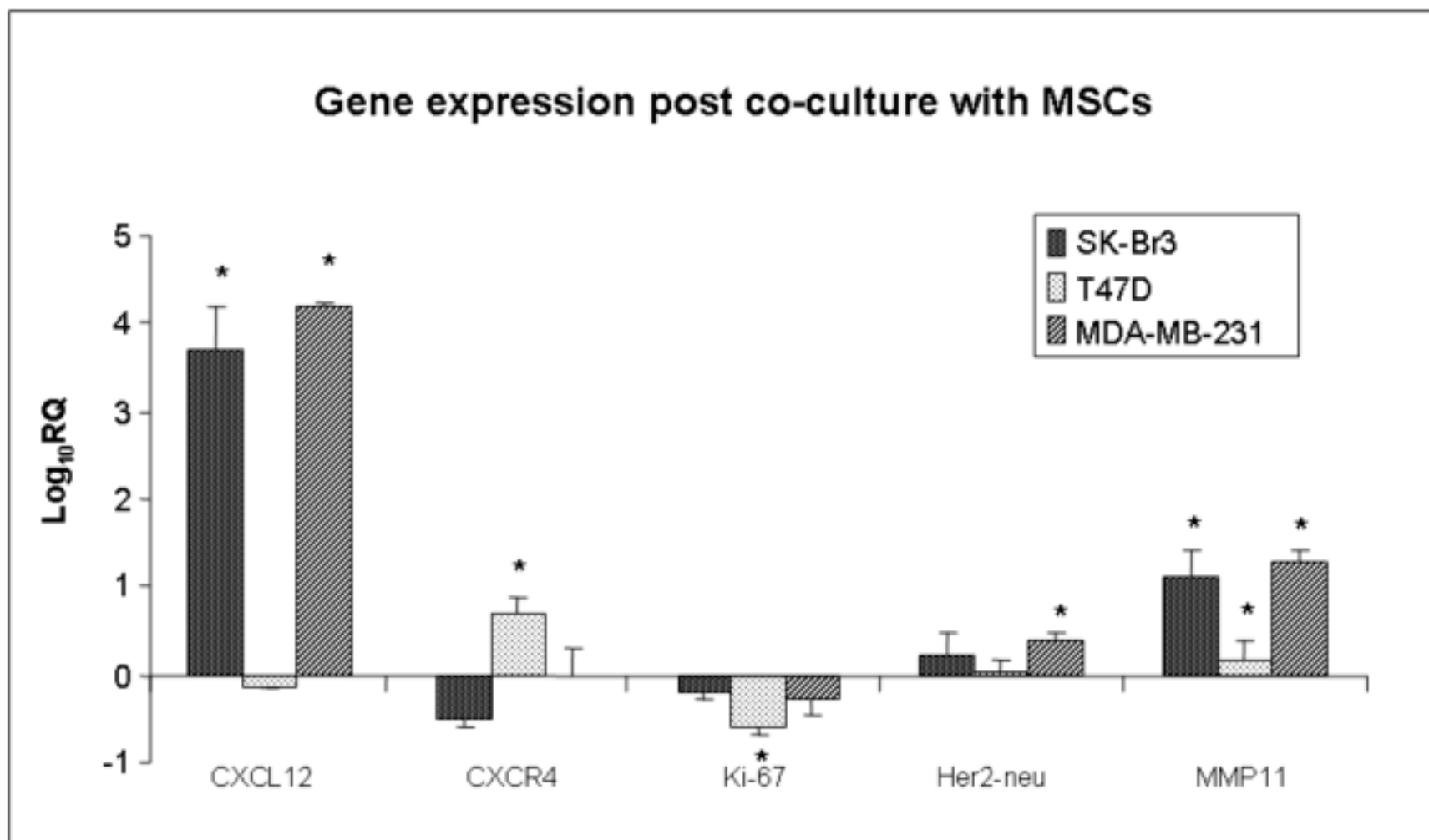
18 E-cadherin staining: (a) T47D cells, (b) T47D + MSCs, (c) Confirmation of reduced E-  
19 cadherin by western blot of protein lysates from T47D cells cultured individually and  
20 those retrieved following direct co-culture with MSCs.  $\beta$ -actin was used to confirm  
21 uniform sample loading.  
22  
23  
24  
25

26 Dual staining with cell type specific antibodies; Red – epithelial specific pancytokeratin,  
27 Blue – haemotoxylin stained nuclei. (c) MDA-MB-231 cells, (d) MDA-MB-231 +  
28 MSCs.  
29  
30

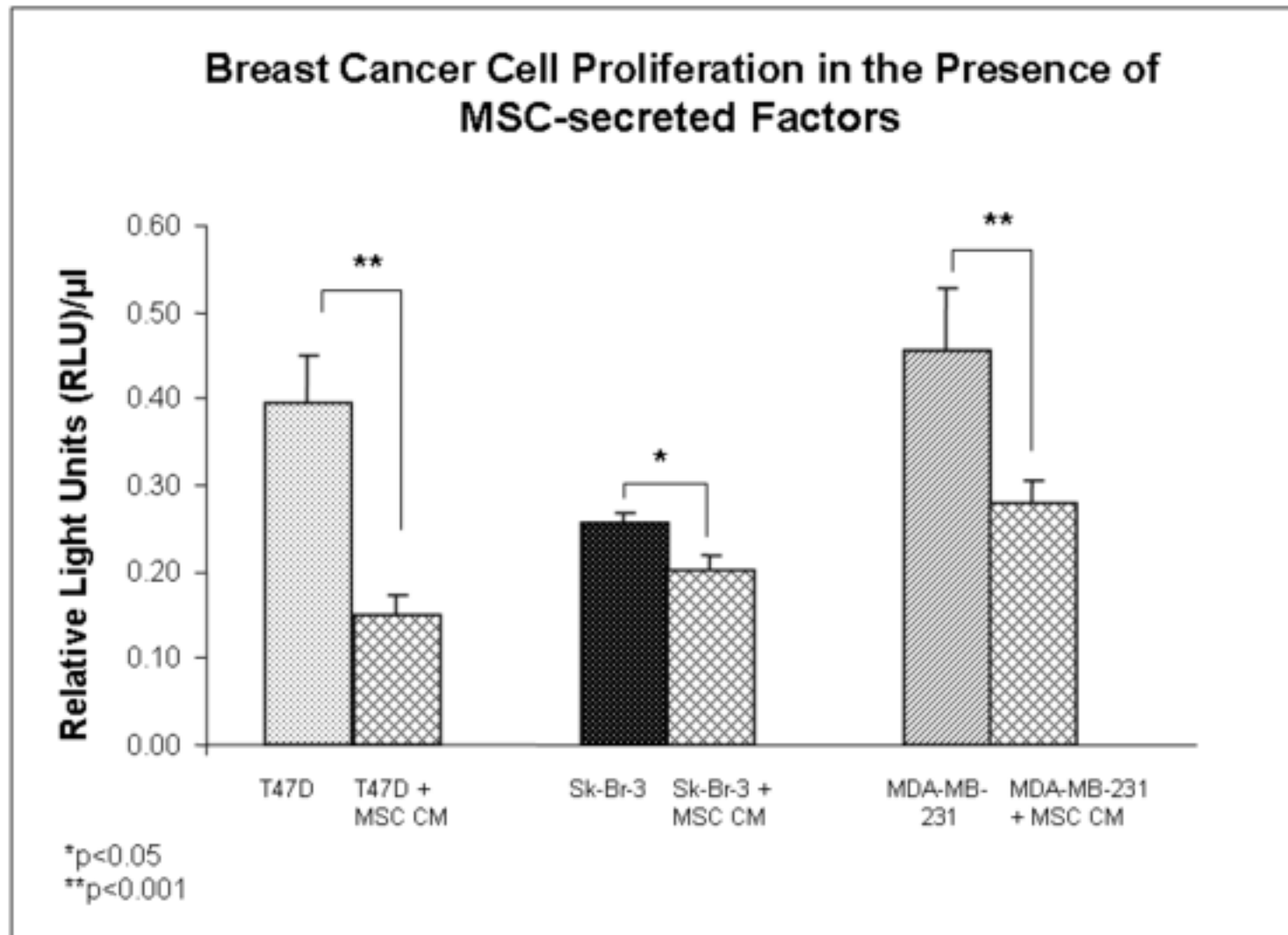
31 Confocal fluorescent images of cell cytoskeletons stained with Alexafluor (green).  
32

33 Epithelial cells were also labeled with PKH26 (red) prior to mixing: (e) T47D cells (f)  
34 T47D + MSCs. All images presented are at 200x magnification.  
35  
36  
37  
38  
39  
40  
41  
42  
43  
44  
45  
46  
47  
48  
49  
50  
51  
52  
53  
54  
55  
56  
57  
58  
59  
60  
61  
62  
63  
64  
65

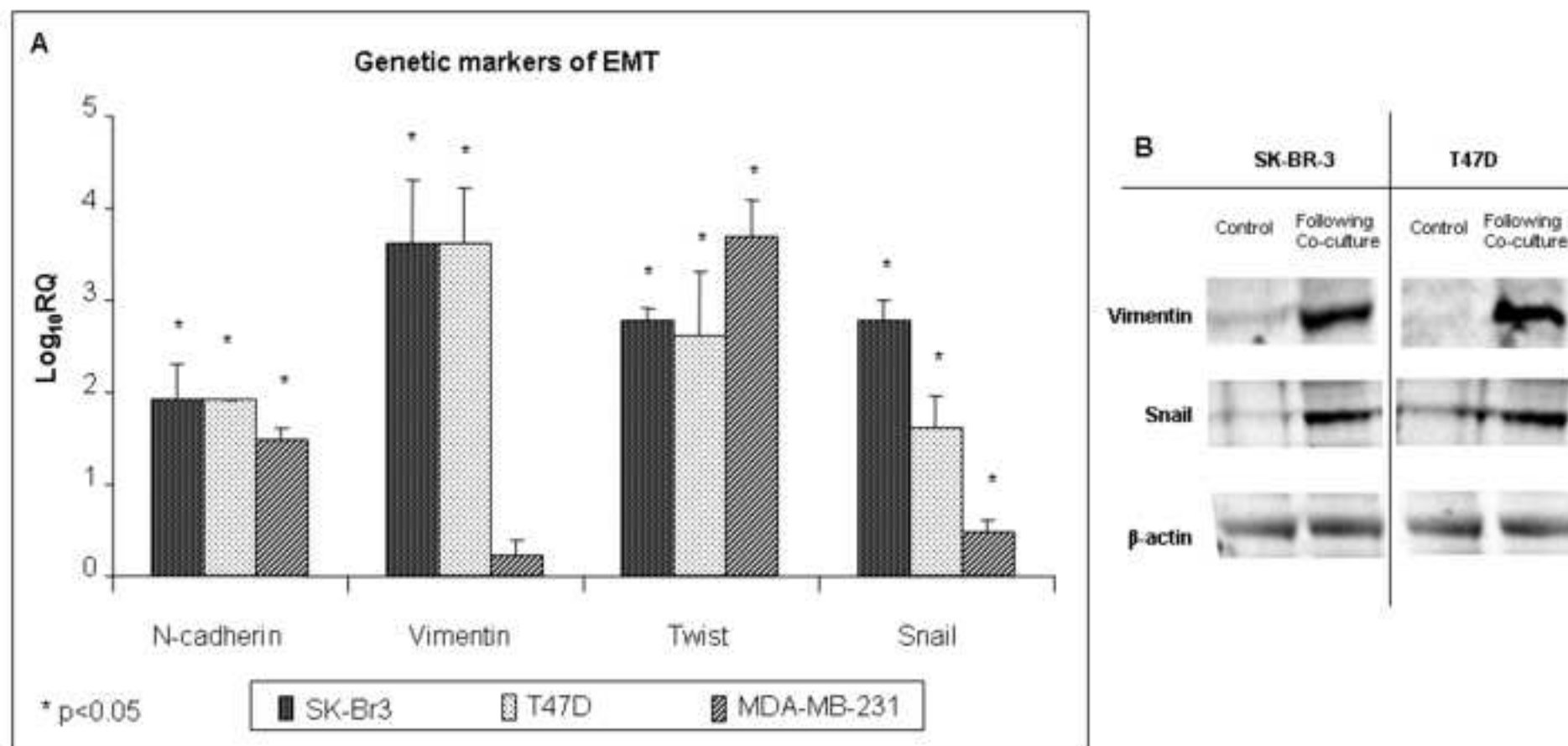
**Fig. 1:** Change in gene expression in breast cancer cells retrieved following direct co-culture with MSCs.



**Fig. 2:** Changes in proliferation of breast cancer cells exposed to factors secreted by MSCs for 72hrs



**Fig. 3:** (A) Changes in expression of EMT specific genes in breast cancer cells retrieved following direct co-culture with MSCs. (B) Representative samples showing increases in expression at the protein level by western blot.



**Fig. 4:** Changes in expression of EMT genes in breast cancer cells following culture in MSC conditioned medium (indirect co-culture).

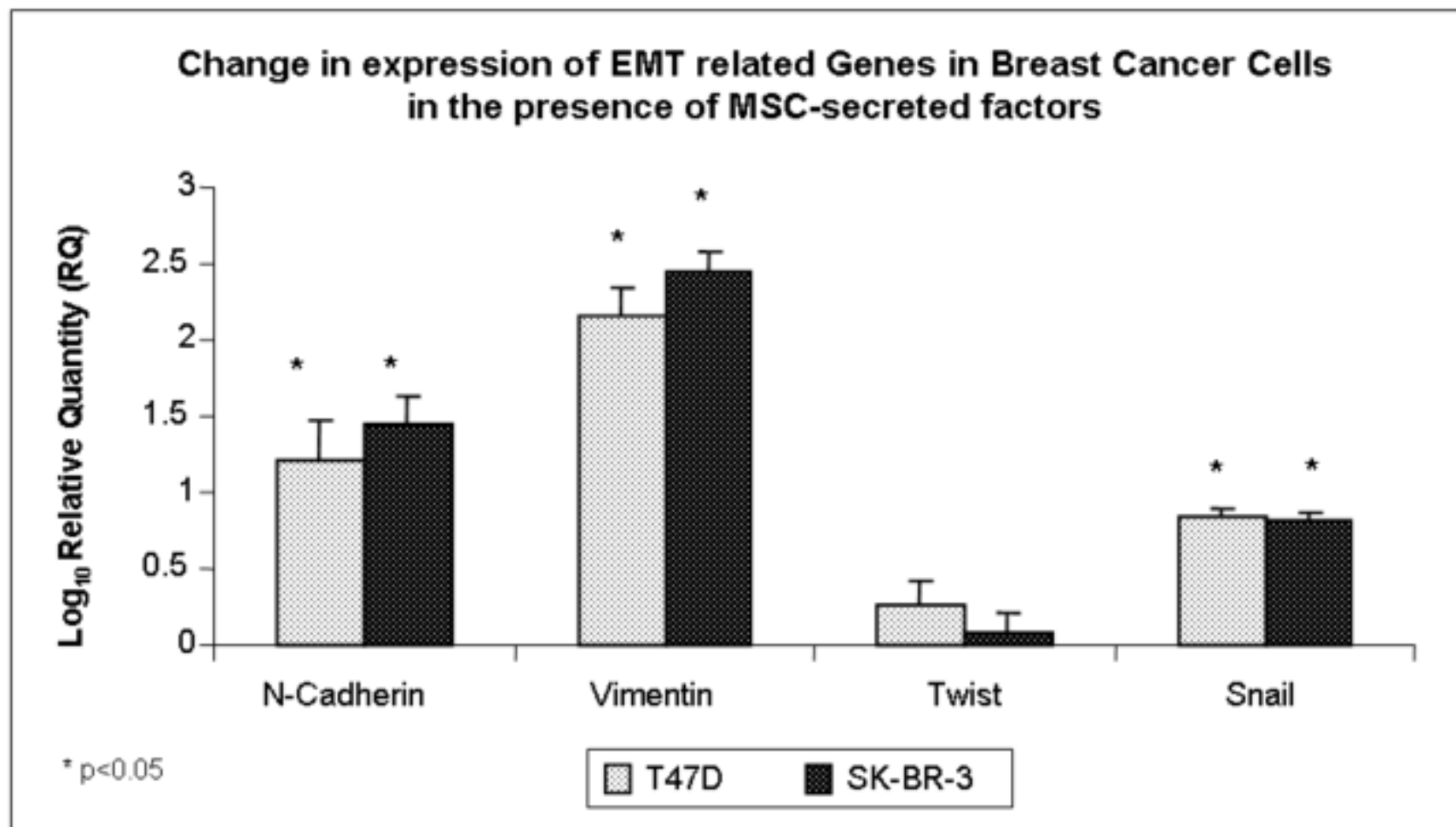
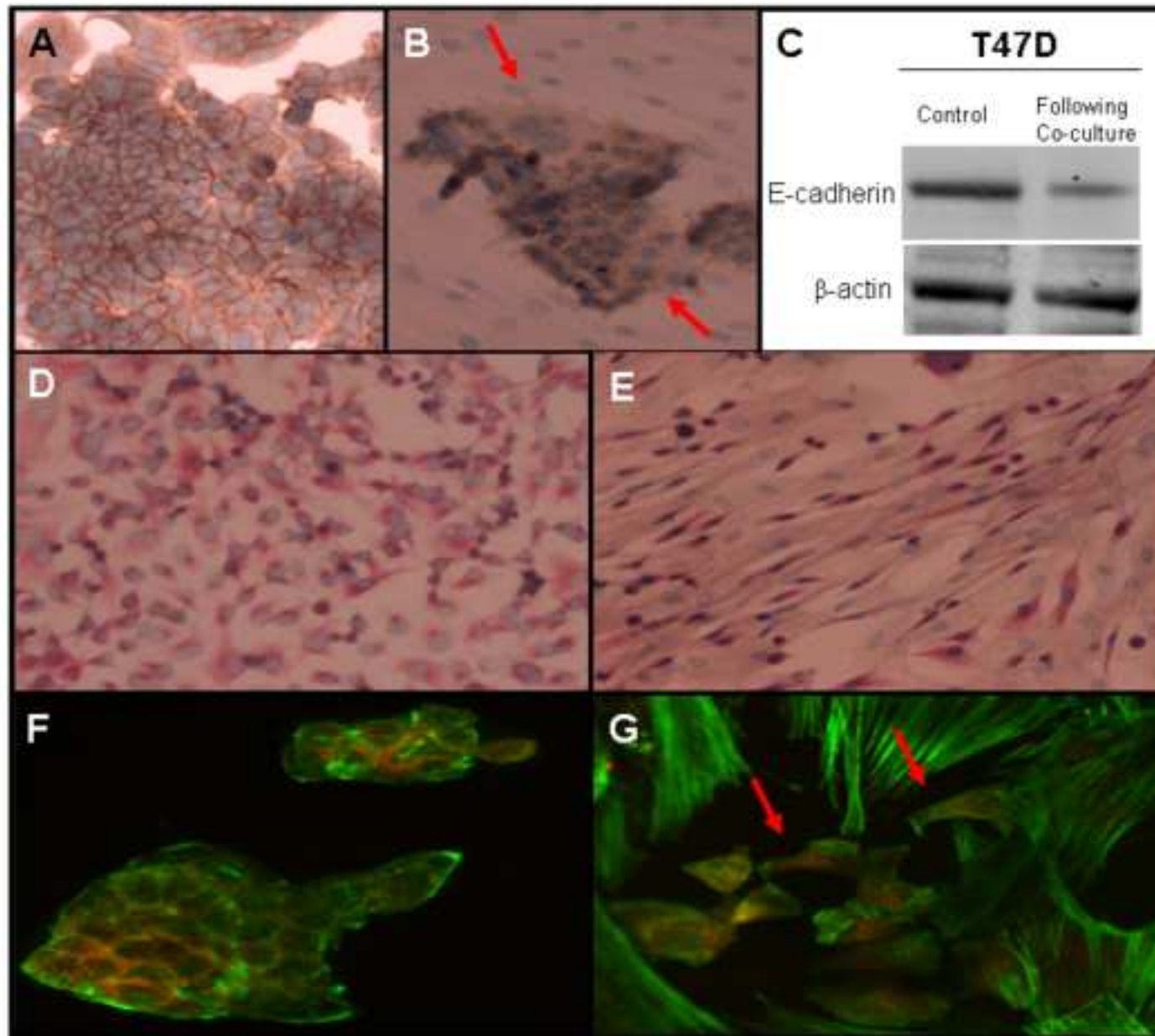


Fig. 5



**Table 1**[Click here to download Table: Table 1.doc](#)

Gene Function	Gene Symbol	Gene Name	Fold Change		
			Sk-Br3	T47D	MDA-MB-231
Oncogene & proto-oncogenes	NCOA4	Nuclear receptor co-activator 4	3.7	3.7	N/A
	FOS	Osteosarcoma oncogene	6.1	38.9	5.5
	MUC1	Mucin 1	6.1	1.6	N/A
	FYN	FYN oncogene	11	17.6	1.9
	JUN	JUN oncogene	3.2	3.4	2.7
	MET	MET proto-oncogene	3.3	15.4	N/A
	EPHA2	Ephrin receptor A2	2.3	5.5	1.5
Macrophage marker	CD68*	CD68 macrophage antigen/microsialin	8.1	35	3.7
Angiogenesis	VEGF	Vascular endothelial growth factor A	7.3	12	N/A
Anti-apoptosis	IGF1R	Insulin-like growth factor 1 receptor	3.5	1.2	2
	BCL2*	B-cell CLL/lymphoma 2	9.4	6.3	N/A
	CAV-1*	Caveolin 1	8.5	3994	1.2
EMT induction	TGFBR2*	Transforming growth factor-beta receptor type II	8.7	2142	1.8
	ACVR1*	Activin A receptor type 1/ TGF beta superfamily receptor 1	6.7	3.3	3.3
Proliferation	CCNE1	Cyclin E1	-2.8	-2.1	N/A
	MKi67*	Antigen identified by monoclonal antibody Ki-67	-3.3	-4.9	-2.4
	MYBL2	Myeoblastosis oncogene	-5.5	-4.4	-2
Invasion & Migration	MMP11*	Matrix metalloproteinase 11 (Stromelysin 3)	15.2	2.9	20
	CXCL12*	Stromal cell-derived factor 1	9,949	-1.2	17,066

Table 1: Low Density Array analysis of breast cancer cells retrieved following co-culture with MSCs. \* selected genes validated in triplicate experiments by RQ-PCR