



Title	A comparison of SWAT, HSPF and SHETRAN/GOPC for modelling phosphorus export from three catchments in Ireland
Authors(s)	Nasr, Ahmed Elssidig, Bruen, Michael, Jordan, Phillip, Moles, Richard, Kiely, Gerard, Byrne, Paul
Publication date	2007-03
Publication information	Nasr, Ahmed Elssidig, Michael Bruen, Phillip Jordan, Richard Moles, Gerard Kiely, and Paul Byrne. "A Comparison of SWAT, HSPF and SHETRAN/GOPC for Modelling Phosphorus Export from Three Catchments in Ireland." Elsevier, March 2007. https://doi.org/10.1016/j.watres.2006.11.026 .
Publisher	Elsevier
Item record/more information	http://hdl.handle.net/10197/2276
Publisher's statement	All rights reserved
Publisher's version (DOI)	10.1016/j.watres.2006.11.026

Downloaded 2026-05-01 23:37:07

The UCD community has made this article openly available. Please share how this access benefits you. Your story matters! (@ucd_oa)



© Some rights reserved. For more information

1 **A comparison of SWAT, HSPF and SHETRAN/GOPC for modelling phosphorus**
2 **export from three catchments in Ireland**

3
4 Ahmed Nasr^a, Michael Bruen^{a,*}, Philip Jordan^b, Richard Moles^c, Gerard Kiely^d, Paul
5 Byrne^c

6 ^aCentre for Water Resources Research, University College Dublin, Earlsfort Terrace,
7 Dublin 2, Ireland. Tel.: +353-1-7167378; Fax: +353-1-7167399; E-mail address:

8 Michael.Bruen@ucd.ie

9 ^bSchool of Environmental Sciences, University of Ulster, Coleraine, NI

10 ^cDepartment of Chemical and Environmental Science, University of Limerick

11 ^dDepartment of Civil and Environmental Engineering, University College Cork

12

13

14

15

16

17

18

19

20

21

22

23

1 **Abstract**

2 Recent extensive water quality surveys in Ireland revealed that diffuse phosphorus (P)
3 pollution originating from agricultural land and transported by runoff and subsurface
4 flows is the primary cause of the deterioration of surface water quality. P transport from
5 land to water can be described by mathematical models that vary in modelling approach,
6 complexity and scale (plot, field and catchment). Here, three mathematical models
7 (SWAT, HSPF and SHETRAN/GOPC) of diffuse P pollution have been tested in three
8 Irish catchments to explore their suitability in Irish conditions for future use in
9 implementing the European Water Framework Directive. After calibrating the models,
10 their daily flows and total phosphorus (TP) exports are compared and assessed. The
11 HSPF model was the best at simulating the mean daily discharge while SWAT gave the
12 best calibration results for daily TP loads. Annual TP exports for the three models and for
13 two empirical models were compared with measured data. No single model is
14 consistently better in estimating the annual TP export for all three catchments.

15

16 **Keywords:** Phosphorus; SWAT; HSPF; SHETRAN; GOPC

17

18 **1. Introduction**

19 The introduction of the Water Framework Directive in Europe (EEC, 2000) required
20 Member States to review water quality problems in all their water bodies. In Ireland,
21 riverine and lake eutrophication due to diffuse pollution has been identified as a major
22 problem (Earle, 2003) and phosphorus (P) is the limiting nutrient controlling

1 eutrophication in inland waters (McGarrigle et al., 2002). Therefore an effective way to
2 tackle eutrophication is to control P inputs, both from point and diffuse sources.

3

4 Formerly, phosphorous from point sources was the major cause of serious pollution
5 incidents in most Irish rivers (McGarrigle et al., 2002). However, in response to the
6 Urban Wastewater Directive (EEC, 1991) many wastewater treatment plants in Ireland
7 were upgraded to include a tertiary process resulting in a large reduction in pollution
8 from point sources. Now, in many catchments most nutrients entering rivers are from
9 diffuse sources and therefore, this study modelled this influence, concentrating on P
10 transport in three Irish catchments. The catchments were chosen on the basis of
11 availability of the data required by the models and because they have different climate,
12 land use and soil types. The modelled variable is total phosphorus (TP) load because of
13 its direct relationship with impacts on receiving waters (Hilton et al., 2006).

14

15 According to the DPSIR conceptual framework (Drivers, Pressures, State, Impact and
16 Response) (Irvine et al., 2005) that will guide the selection of modelling techniques in
17 Ireland, it is likely that the most useful models will be of the physically-based or
18 mechanistic types. Three widely used, physically-based, models were selected to cover a
19 range of variation in (i) the complexity of their representation of the physical, chemical,
20 and bio-chemical processes involved in P mobilisation and transport, (ii) the degree of
21 complexity in spatial disaggregation of the catchment, and (iii) the normal simulation
22 time step. The models are: Soil Water and Analysis Tools (SWAT) (Arnold et al., 1998);
23 Hydrological Simulation Program – FORTRAN (HSPF) (Bicknell et al., 1997); and

1 Système Hydrologique Européen TRANsport (SHETRAN) (Ewen et al., 2000) coupled
2 with the Grid Oriented Phosphorus Component (GOPC) (Nasr et al., 2005). The
3 differences between the three models are discussed here first and then their application to
4 the study catchments. Finally, their flow and TP load simulations are described and
5 assessed and the TP loads compared with empirical models.

6

7 **2. Differences between the SWAT, HSPF, and SHETRAN/GOPC models**

8 **2.1. Processes representation**

9 The models chosen range from semi-empirical to fully physically-based in how they
10 represent the relevant hydrological, chemical and bio-chemical processes transforming
11 the P compounds both in the soil and during its transport by water. The SWAT model
12 uses semi-empirical equations to represent most of these processes. HSPF models the
13 catchment response by changes in water, sediment, and chemical amounts in a series of
14 vertical storages. The fluxes between the various storages and exchanges with the river
15 reaches are modelled with equations that have parameters determined by measurement
16 and/or calibration. In contrast, SHETRAN/GOPC is an example of a fully physically-
17 based model which relies wholly on relationships derived from physical and chemical
18 laws. In order of increasing hydrological complexity, the models are ranked SWAT,
19 HSPF, SHETRAN and in order of increasing complexity in representing P processes,
20 HSPF, SWAT, GOPC.

21

22 **2.2. Spatial representation**

1 The three models have different procedures for representing spatial variation within the
2 catchment.

3 • SWAT divides the catchment into a number of sub-catchments, each of which has
4 a number of Hydrologic Response Units (HRUs) with uniform land use and soil
5 types (without reference to their actual spatial position within the sub-catchment).

6 • HSPF divides the catchment on the basis of land use alone. Each land use can
7 consist of pervious and impervious parts.

8 • In SHETRAN/GOPC, the catchment is divided into a horizontal orthogonal grid
9 network and in the vertical direction by a column of horizontal layers at each grid
10 square. Each grid element can have different land use and hydraulic properties.

11 The channel system is represented on the boundaries of the grid squares.

12

13 **2.3. Temporal resolution**

14 SWAT operates only at a daily time step. Both HSPF and SHETRAN/GOPC can
15 simulate at any time step from one minute up to one day. In all cases, the input time
16 series should always be available at intervals equal to or less than the simulation time
17 step.

18

19 **3. Study catchments**

20 The Clarianna catchment (23 km²) is located in County Tipperary in an area which is one
21 of the most intensively farmed catchments within the lower Shannon region. The Dripsey
22 catchment (15 km²) is located near the town of Donoughmore in the south of Ireland and

1 ultimately drains into Inniscarra lake, a freshwater lake that in recent years has
2 experienced signs of eutrophication (Scanlon et al., 2004).

3 The Oona Water catchment (96 km²) is located in County Tyrone and ultimately drains
4 into Lough Neagh which is a water source for Belfast.

5

6 **4. Data**

7 The model comparisons are based on simulations of daily time series of discharge and TP
8 load at each catchment outlet. Data used in these simulations are summarised in Table
9 (1). Each of the three models has been calibrated for the period from 1/12/2000 to
10 29/7/2001 in the Clarianna catchment, and from 1/1/2002 to 31/12/2002 in the Dripsey
11 and Oona Water catchments. To allow HSPF and SHETRAN show their best
12 performances, the available time step resolution of the input data has been also employed
13 as a time step of simulation. As SWAT's time step must be one day, daily input time
14 series for it were derived from the available high resolution input data.

15

16 The only input of P was assumed to be direct application of fertiliser and animal slurries
17 on the land. In the Clarianna and Dripsey catchments, the total annual P load applied on
18 the soil was taken as 15 kg P.ha⁻¹ in line with the National (Teagasc) recommendations
19 (Teagasc, 1998). For the Oona Water catchment, P inputs of 18.9 million kg P to the soil
20 were assumed based on a P balance in Northern Ireland (Jordon, 2003). In each
21 catchment, the estimated value of the total annual P load has been distributed evenly over
22 the twelve months of the year.

23

1 The observed TP concentrations at the outlet of the three catchments (Jordan et al., 2005)
2 are summarised in Table (1) and daily TP loads were calculated from these and flow data.
3 The modelled TP is the sum of the dissolved and sediment-attached P load estimates.

4

5 **5. Model calibration and parameter estimation**

6 **5.1. Approach used in the calibration**

7 Manual calibration has been used in the vast majority of reported applications of the three
8 models (e.g. Jha et al., 2002; Wang et al., 1999; Bathurst, 1986) although some very
9 limited attempts at automatic calibration have been made (e.g. Eckhardt and Arnold,
10 2001; Doherty and Johnston, 2003). Despite the considerable effort that has to be made to
11 implement automatic calibration in these studies the results obtained were still within the
12 range of the manually calibrated models.

13

14 To avoid the complexity and computational demands that arise when using automatic
15 calibration (which would not allow these models to be used in many practical situations)
16 a simple manual strategy was employed to calibrate the parameters of the three models to
17 produce reasonable estimates for both discharges and TP loads. The three models were
18 first calibrated to produce reasonable simulations of the discharge. Then the parameters
19 of the best flow calibration were used without any further change during the P
20 calibration, following the three step strategy proposed by Gupta et al. (2003; p. 11).

21

22 **5.2. Initial estimates of model parameters (Level Zero estimates)**

1 The main objective for the Level Zero estimates is to populate a default data set of
2 parameters for the three models for each of the three test catchments. The SWAT and
3 HSPF models can automatically produce default values for all model parameters by
4 linking each soil and land use type with corresponding internal tables of default
5 parameters. For the third model, the SHETRAN/GOPC combination, the initial values of
6 the SHETRAN parameters were all taken from guidance given in its user's manual.

7

8 **5.3. Improving the parameter estimates (Level One estimates)**

9 The effective parameters for flow simulation in HSPF were based on USEPA (2000). For
10 its phosphorous modelling, the method used assumes a first order kinetics equation to
11 represent each of the soil P processes. Each equation contains two parameters, the
12 kinetics rate, which is calibrated manually, and the temperature coefficient, which is
13 maintained at a specified value (USEPA, 2000). For the SWAT model the user's manual
14 guidance was followed to improve the parameter values for flow and nutrient simulation.

15

16 The SHETRAN model was developed to be used without calibration due to the physical
17 nature of its parameters which are intended to be obtained from direct measurements.
18 However in most previous applications of this model (e.g. Anderton et al., 2002), some
19 parameters have been calibrated and this has been done here.

20

21 To illustrate the complexity of each model in terms of parameter calibration, Tables (2)
22 and (3) give the number of the effective parameters and the methods by which they have
23 been used in the water and P simulations, and also cite the source for the methods. We

1 refer the reader to the user's manual of each model for definitions and descriptions of the
2 parameters and these are not repeated here. However, the number of parameters which
3 can be adjusted for the three models is reported in Tables (2) and (3).

4

5 **5.4. Adjustment of the parameters (Level Two estimates)**

6 Manual improvement of effective parameters for complex models is difficult to carry out
7 in a reliable and consistent manner due to (i) large numbers of parameters, (ii)
8 equifinality, (iii) parameter sensitivity, and (iv) uncertainty (Gupta et al., 2003). In this
9 study, however, the manual calibration is to provide results corresponding to practical
10 situations when these models are used by typical users with only a general knowledge of
11 sophisticated calibration techniques. Thus the models are compared in terms of their
12 likely performances in reality rather than their potential best performances if unlimited
13 calibration resources were available.

14

15 A systematic approach to manual calibration has been followed in this study where for
16 each model and in each catchment, one parameter was changed at a time and the resulting
17 shapes of the hydrograph in the flow calibration or load graphs in the P calibration were
18 visually compared with the observed. In addition, the Nash-Sutcliffe index (Nash and
19 Sutcliffe, 1970) was also calculated for each model run. In the flow calibration, first the
20 focus was on visually matching the peaks, then on matching the flow recessions and
21 finally on the low flow values. This requires sequential adjustment to the particular
22 parameters in the models that influence each of the three components of the hydrograph.
23 The P calibration followed a similar procedure where the focus was first on the high

1 values, then on the low values, and finally on the overall shape of the simulated time
2 series.

3

4 **6. Comparison criteria**

5 The three models are compared both on their daily and annual results. Two criteria are
6 used to assess the models in simulating the daily discharges and TP loads. Firstly, for
7 each catchment, the flow hydrograph was plotted together with the rainfall hyetograph so
8 that the flow simulation and its consistency with rainfall can be observed and the daily
9 TP results were superimposed on the graph. This allows a direct visual appreciation of
10 the influence of the hydrological modelling on the transport of P. Importantly, it also
11 reveals many systematic aspects of the model performance such as tendencies to over or
12 under estimate, which are seasonal or related to flow or rainfall, and tendencies to match
13 high peaks but not low ones. These tendencies would be difficult to detect with a single
14 numerical index.

15

16 The second criterion is based on two numerical measures: the Nash-Sutcliffe index (R^2);
17 and the fraction of the mean of the squares of the errors due to bias (B%MSSE). These
18 are calculated as follows:

19
$$R^2 = 1 - \frac{\sum_{i=1}^n (x_i - \hat{x}_i)^2}{\sum_{i=1}^n (x_i - \bar{x})^2} \quad (1)$$

$$1 \quad B\%MSSE = \frac{\left(\begin{matrix} - \\ \hat{x} \\ x - \bar{x} \end{matrix} \right)^2}{\sum_{i=1}^n \left(x_i - \bar{x} \right)^2 / n} \quad (2)$$

2 where x_i is the observed value, \hat{x}_i is the value estimated by a model, \bar{x} is the mean of
 3 the observed values, $\bar{\hat{x}}$ is the mean of the estimated values, and n is the number of data
 4 values.

5

6 The R^2 index describes the ability of the model to explain the variability in the data,
 7 while the B%MSSE index describes the model's ability to match the central tendency
 8 (mean) of the data. A good model is one that has a good visual match to the observed
 9 data, with a value of R^2 close to one, and a small value of B%MSSE.

10

11 **7. Comparison with simple empirical models**

12 The three physically-based models are compared with two empirical models specifically
 13 developed to estimate annual TP export. The first, (DM) is derived from an equation
 14 developed by Daly et al. (2006) specifically for use in Irish conditions and the second
 15 model (ECM) is an export coefficient model (Johnes, 1996) used in the UK.

16

17 **8. Results**

18 **8.1. Discharge performance**

19 The hydrographs of observed and estimated discharge (Figs (1.a) (2.a) (3.a)) show that, in
 20 general, none of the models is able to replicate the entire shape of the hydrographs

1 throughout the simulation period. However, HSPF is the best at matching the discharge
2 hydrographs and SWAT performed better than SHETRAN. The noticeable weakness in
3 SHETRAN is its failure to adequately model the flow peaks and recessions. Most of its
4 estimated peaks are either very much higher or lower than the observations and also the
5 estimated flow recession is not as flat as the observed.

6

7 The numerical criteria for the flow simulations from each model are compared in Table
8 (4). The best results for R^2 are 0.95, 0.74, and 0.91 and for the HSPF model in the
9 Clarianna, Dripsey, and Oona respectively. The R^2 for SWAT (0.91) is better than for
10 SHETRAN (0.74) in the Dripsey. However, SHETRAN has an R^2 of 0.8 which is better
11 than the 0.73 for SWAT in the Oona. The B%MSSE values for all three models in
12 Clarianna are all low and this means that the bias in estimating the mean of the observed
13 flow was not the major source of error. In the Dripsey and Oona, the B%MSSE value for
14 HSPF is high compared to SWAT and SHETRAN with the latter giving the best results
15 for B%MSSE for these two catchments.

16

17 **8.2. Daily TP results**

18 Figs ((1.b), (2.b), and (3.b)) show the TP results. SWAT performed quite well in all three
19 catchments. The GOPC TP load performance is second, despite the problems with the
20 flow estimates. It is quite surprising that HSPF was the worst for TP load in the three
21 catchments although it was best for discharges. The main reason for this could be its
22 smaller scope for calibration due to the fewer number of P parameters, as show in Table

1 (3), and this indicates the limited capability of the first order kinetics equation used in the
2 P simulation by HSPF.

3

4 The numerical criteria for TP loads are summarised in Table (4). In the Clarianna, the
5 value of R^2 for SWAT (0.59) is the best while the corresponding value for GOPC (0.40)
6 is the worst of the three models. HSPF has the highest B%MSSE while the other two
7 models have low values, indicating that their bias is less significant. In the Dripsey, the
8 best R^2 value of 0.51 is obtained from the GOPC model while the HSPF model value was
9 the worst (0.22). All three models have low B%MSSE values indicating an overall
10 acceptable bias performance in this catchment. In the Oona, SWAT has the best R^2 (0.56)
11 while its B%MSSE value is second best to the HSPF value. The GOPC has the worst R^2
12 (0.23) and B%MSSE values.

13

14 **8.3. Annual TP export results**

15 Table (5) shows the observed and modelled values of annual TP export from each
16 catchment. In the Clarianna, SWAT and GOPC are the best of the five models. Both
17 empirical models greatly overestimated the TP export while HSPF underestimates. In the
18 Dripsey, all models except DM are comparable with the observations, with HSPF being
19 the best. In the Oona, SWAT is the only model that overestimated the TP export although
20 the result is still acceptable. HSPF and DM also give acceptable results, although lower
21 than the observed, whereas the GOPC and EM significantly underestimate.

22

23 The results from the three physically-based models are better than the results from the
24 two empirical models. This is not surprising because the empirical models are fitted to a

1 larger number of different catchments and are an average of the responses over a larger
2 area and have much less catchment-specific information.

3

4 **9. Conclusions**

5 In the three catchments, the HSPF model was best in simulating the mean daily
6 discharges. Discharge results from SWAT and SHETRAN were acceptable despite
7 occasional deficiencies. Nevertheless, the best simulation for daily TP loads in the study
8 catchments was by SWAT. The TP performance of the SHETRAN/GOPC combination
9 was good although hampered by its discharge simulation. In terms of TP export, no single
10 model was best for all three catchments, however the three physically-based models gave
11 annual TP export estimates closer to the measurements than the two empirical models. In
12 the short term, we recommend using SWAT for TP load estimation.

13

14 **Acknowledgements**

15 This project was supported by the National Development Programme (NDP) through the
16 RTDI programme and co-funded by the Irish EPA and Teagasc (2000-LS-2.2.2-M2). In
17 the Oona Water, we acknowledge the use of hydrology data from the Rivers Agency
18 (Department of Agriculture and Rural Development, NI) and infrastructure from the
19 NERC funded CHASM project (NER/H/S/1999/00164).

20

21 **References**

22 1. Anderton, S.P., Larton, J., White, S.M., Llorens, P., Gallart, F., Salvany, C.,
23 O'Connell, P.E., 2002. Internal evaluation of a physically-based distributed model

- 1 using data from a Mediterranean mountain catchment. *Hydrology and Earth*
2 *System Sciences* 6(1), 67–83.
- 3 2. Arnold, J.G., Srinivasan, R., Muttiah, R.S., Williams, J.R., 1998. Large area
4 hydrological modelling and assessment Part I: Model development. *Journal of the*
5 *American Water Resources Association (JAWRA)* 34(1), 73-89.
- 6 3. Bathurst, J.C., 1986. Physically-based distributed modelling of an upland
7 catchment using the System Hydrologique European. *Journal of Hydrology* 87,
8 79-102.
- 9 4. Bicknell, B.R., Imhoff, J.C., Donigian, A.S., Johanson, R.C., 1997. Hydrological
10 Simulation Program – FORTRAN (HSPF), User’s Manual for release 11. EPA –
11 600/R-97/080. United States Environmental Protection Agency, Athens, GA.
- 12 5. Co-ORDination of INformation on the Environment (CORINE), 1989. Land
13 Cover Project, The Nomenclature. Commission of the European Communities,
14 Directorate-General Environment Nuclear Safety and Civil Protection, Rue de la
15 Loi 200, B-1049 Brussels, Belgium.
- 16 6. Daly, K., Mills, P., and Styles, D., 2006. Eutrophication from agriculture sources -
17 Modelling phosphorus loss from soils. Environmental Protection Agency,
18 Johnstown Castle, Co. Wexford, Ireland. (In press).
- 19 7. Doherty, J., Johnston, J.M., 2003. Methodologies for calibration and predictive
20 analysis of a watershed model. *Journal of the American Water Resources*
21 *Association (JAWRA)* 39(2), 251-256.

- 1 8. Earle, J.R., 2003. The Three Rivers Project – water quality monitoring and
2 management systems in the Boyne, Liffey and Suir Catchments in Ireland. *Water
3 Science and Technology* 47(7-8), 217-225.
- 4 9. Eckhardt, K., Arnold, J.G., 2001. Automatic calibration of a distributed catchment
5 model. *Journal of Hydrology* 251, 103-109.
- 6 10. EEC (European Economic Community), 2000. The council of 23 October 2000
7 establishing a framework for Community action in the field of water policy
8 (2000/60/EC). *Official Journal of the European Communities* L327, 1-72.
- 9 11. EEC (European Economic Community), 1991. The council of 21 May 1991
10 concerning urban wastewater treatment (91/271/EEC). *Official Journal of the
11 European Communities* L135, 40-52.
- 12 12. Ewen, J., Parkin, G., O’Connell, E., 2000. SHETRAN: Distributed basin flow and
13 transport modelling system. *Journal of Hydrologic Engineering* 5(3), 250-258.
- 14 13. Feddes, R.A., Kowalik, P., Neuman, S.P., Bresler, E., 1976. Finite difference and
15 finite element simulation of field water uptake by plants. *Hydrological Science
16 Bulletin* 21, 81-98.
- 17 14. Gardiner, M.J., Radford, T., 1980. *Soil Associations of Ireland and their land use
18 potential (Explanatory Bulletin to Soil Map of Ireland 1980)*. Published by An
19 Foras Taluntais, 19 Sandymount Avenue, Dublin 4, Ireland.
- 20 15. Gupta, H.V., Sorooshian S., Hogue, T.S., Boyle, D.P., 2003. Advances in
21 automatic calibration of watershed models. In: *Calibration of watershed models*,
22 Edited by: Duan, Q., Gupta, H.V., Sorooshian, S., Rousseau, A.N., Turcotte, R.,
23 American Geophysical Union, Washington DC, USA, pp. 9-28.

- 1 16. Hargreaves, G.L., Hargreaves, G.H., Riely, J.P., 1985. Agriculture benefits for
2 Senegal River Basin. *Journal of Irrigation and Drainage Engineering (ASCE)*
3 111(2), 113-124.
- 4 17. Hilton, J., O'Hare, M., Bowes, M.J., Jones, J.I., 2006. How green is my river? A
5 new paradigm of eutrophication in rivers. *Science of the Total Environment* 365,
6 66-83.
- 7 18. Irvine, K., Mills, P., Bruen, M., Walley, W., Hartnett, M., Black, A., Tynan, S.,
8 Duck, R., Bragg, O., Rowen, J., Wilson, J., Johnston, P., O'Toole, C., 2005.
9 Water Framework Directive – An assessment of mathematical modelling in its
10 implementation in Ireland. Environmental Protection Agency, Johnstown Castle,
11 Co. Wexford, Ireland.
- 12 19. Jha, M., Gassman, P.W., Secchi, S., Gu, R., Arnold, J., 2002. Impact of watershed
13 subdivision level on flows, sediment loads, and nutrient losses predicted by
14 SWAT. Working Paper 02-WP 315, Centre for Agriculture and Rural
15 Development, Iowa State University, USA.
- 16 20. Johnes, P.J., 1996. Evaluation and management of the impact of land use change
17 on the nitrogen and phosphorus load delivered to surface waters: the export
18 coefficient modelling approach, *Journal of Hydrology* 183, 323-349.
- 19 21. Jordan, P., Menary, W., Daly, K., Kiely, G., Morgan, G., Byrne, P., Moles, R.,
20 2005. Patterns and processes of phosphorus transfer from Irish grassland soils to
21 rivers – Integration of laboratory and catchment studies. *Journal of Hydrology*
22 304, 20-34.

- 1 22. Jordan, P., 2003. Soil phosphorus balance in Northern Ireland for the year.
2 Personal Communication. School of Environmental Sciences, University of
3 Ulster, Coleraine, NI.
- 4 23. McGarrigle, M.L., Bowman, J.J., Clabby, K.J., Lucey, J., Cunningham, P.,
5 MacCarthaigh, M., Keegan, M., Cantrell, B., Lehane, M., Clenaghan, C., Toner,
6 P.F., 2002. Water quality in Ireland. Environmental Protection Agency, P.O. Box
7 3000, Johnstown Castle Estate, County Wexford, Ireland.
- 8 24. Monteith, J.L., 1965. Evaporation and environment. In: The State and Movement
9 of Water in Living Organisms, Proceedings of 15th Symposium Society for
10 Experimental Biology, Swansea. Cambridge University Press, London, pp. 205-
11 234.
- 12 25. Nash, J.E., Sutcliffe, J.V., 1970. River flow forecasting through conceptual
13 models. Part 1. A discussion of principles. *Journal of Hydrology* 10, 282-290.
- 14 26. Nasr, A., Taskinein, A., Bruen, M., 2005. Developing an independent, generic,
15 phosphorus modelling component for use with grid-oriented, physically based
16 distributed catchment models. *Water Science and Technology* 51(3-4), 135-142.
- 17 27. Priestley, C.H.B., Taylor, R.J., 1972. On the assessment of surface heat flux and
18 evaporation using large-scale parameters. *Monthly Weather Revision* 100, 81-92.
- 19 28. Ritchie, J.T., 1972. Model for predicting evaporation from a row crop with
20 incomplete cover. *Water Resources Research* 8, 1204-1213.
- 21 29. Rutter, A.J., Kershaw, K.A., Robins, P.C., Morton, A.J., 1971/72. A predictive
22 model of rainfall interception in forests - Part I: Derivation of the model from

1 observations in a plantation of Corsican pine. *Agriculture Meteorology* 9, 367-
2 384.

3 30. Scanlon, T.M., Kiely, G., Xie, Q., 2004. A nested catchment approach for
4 defining the hydrological controls on non-point phosphorus transport. *Journal of*
5 *Hydrology* 291, 218-231.

6 31. Soil Conservation Service (SCS), 1972. *SCS National Engineering Handbook*,
7 *Sec. 4, Hydrology*. United States department of Agriculture.

8 32. Teagasc (Agriculture and Food Development Authority), 1998. Nutrient advice
9 for phosphorus and potassium fertiliser. Johnstown Castle Laboratory, Wexford,
10 Ireland.

11 33. USEPA, 2000. *BASINS Technical Note 6: Estimating hydrologic and hydraulic*
12 *parameters for HSPF*. EPA-823-R-00-012, United States Environmental
13 Protection Agency, Office of Water (4305), USA.

14 34. Wang, M., Duru, J.O., Hjelmfelt, A.T., Ghidey, F., 1999. Environmental
15 modelling of a claypan watershed Using HSPF model. Paper submitted to the
16 Storm and Urban Water Systems Modelling Conference, Toronto, Ontario,
17 Canada.

18
19
20
21
22
23
24

1 **Table (1) Data used in model application**

Type of data		Clarianna	Dripsey	Oona Water
Digital Elevation Model	Resolution	20 m X 20 m	20 m X 20 m	50 m X 50 m
Land use	Source	Co-ORDination of INformation on the Environment (CORINE, 1989)		
Soil	Source	Soil map of Ireland (Gardiner and Radford, 1980)		
Weather data (rainfall, temperature, solar radiation, relative humidity, wind speed)	Method	Observed	Observed	Observed
	Time step	15 minutes	30 minutes	5 minutes
Flow discharge	Method	Observed	Observed	Observed
	Time step	15 minutes	15 minutes	1 hour
Soil phosphorus application regime	Method	Estimated	Estimated	Estimated
	Frequency	Annual amount	Annual amount	Annual amount
Total phosphorus at catchment outlet	Method	Observed	Observed	Observed
	Time step	Concentrations of flow proportional composite samples	Concentrations of flow proportional discrete samples	Daily loads

2

- 1 **Table (2) Summary of the methods used and parameters required to simulate processes of the water component of SWAT,**
 2 **HSPF, and SHETRAN models**

Process	SWAT		HSPF		SHETRAN	
	Method	No. of parameters	Method	No. of parameters	Method	No. of parameters
Interception	Water balance	1	Water balance	-	Rutter et al. (1971/72)	5
Potential evapotranspiration (E_p)	Monteith (1965)/ Priestley and Taylor (1972)/ Hargreaves et al. (1985)	-	User defined E _p	-	User defined E _p / Monteith (1965)	-
Actual evaporation (E_a)	Ritchie (1972)	2	Accounting procedure	4	Feddes et al. (1976)	2
Runoff	SCS (1972)	5	Empirical relations	8	Approximation of St. Venant equation	1
Infiltration	Water balance				6	
Inter/Return flow	Kinematic model	2				
Baseflow	Linear reservoir model	5	Linear reservoir	2		
Percolation to groundwater	Water balance		Empirical relation	1		
River flow routing	Variable storage/ Muskingum	3	Water balance	-	Approximation of St. Venant equation	1
		Total = 18		Total = 15		Total = 15

1 **Table (3) Summary of the methods used and parameters required to simulate processes of the phosphorus component of**
 2 **SWAT, HSPF, and GOPC models**

Process	SWAT		HSPF		GOPC	
	Method	No. of parameters	Method	No. of parameters	Method	No. of parameters
Soil P processes (adsorption/desorption, mineralisation/immobilisation, plant uptake)	Mass balance	6	First order kinetics equation	5	Mass balance	7
Leaching of P	Empirical relation	1	Mass Balance	-	Advection equation	1
Dissolution of P in runoff water	Empirical relation	1	Mass Balance	-	Empirical relation	1
Overland transport of dissolved P	Linear reservoir model	-	Not simulated by this model	-	Mass balance	2
Subsurface transport of dissolved P	User defined concentration	1	Mass Balance	-	Advection equation	1
Transport of attached or particulate P	Empirical relation	1	Mass balance	-	Empirical relation	1
		Total = 10		Total = 5		Total =13

3

4

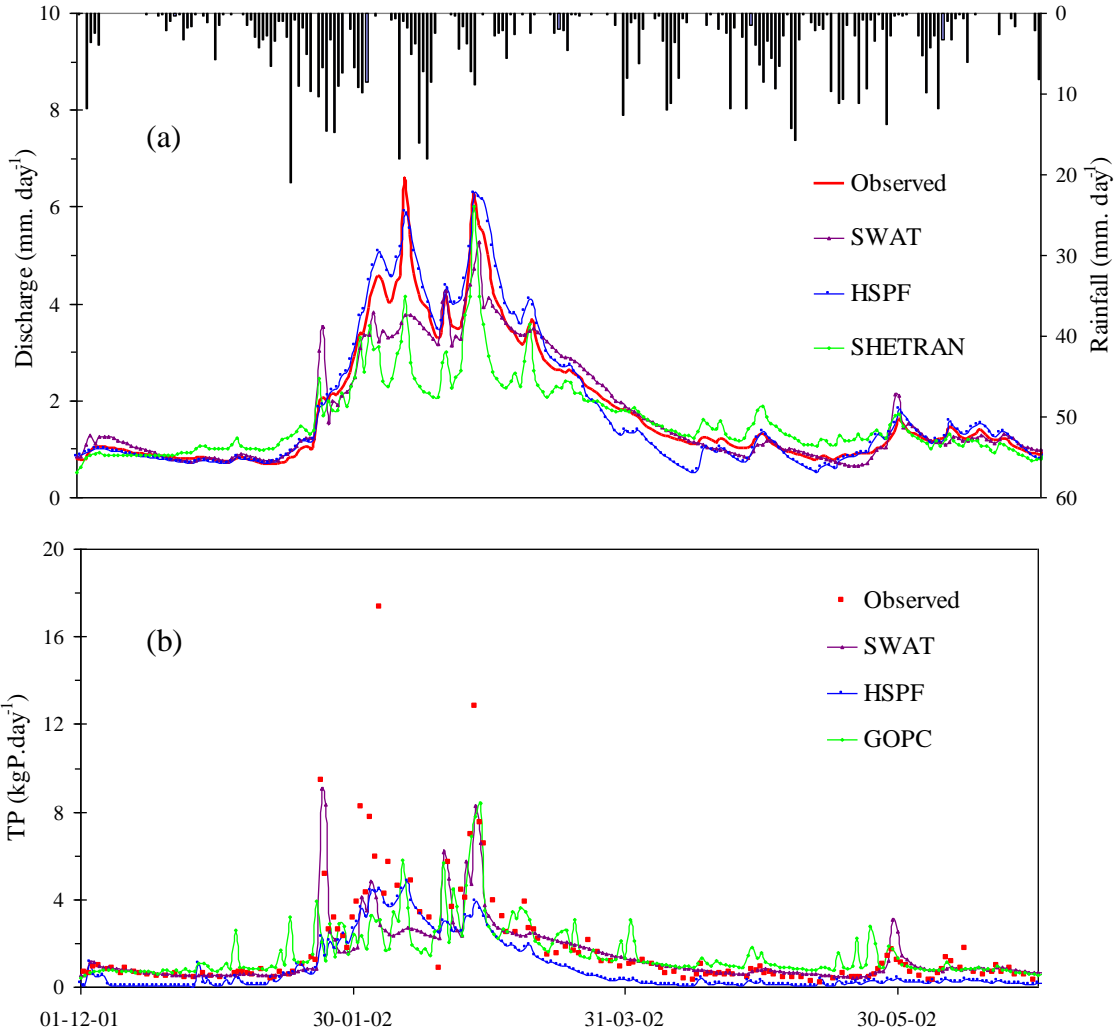
1 **Table (4) Values of R² and B%MSSE for the flow and phosphorus in the three study catchments**
 2

Flow												
	Observed	Clarianna			Observed	Dripsey			Observed	Oona Water		
		Estimated				Estimated				Estimated		
		SWAT	HSPF	SHETRAN		SWAT	HSPF	SHETRAN		SWAT	HSPF	SHETRAN
No. of days	241	241	241	241	365	365	365	365	365	365	365	365
R²	-	0.91	0.95	0.75	-	0.72	0.74	0.65	-	0.73	0.91	0.80
B%MSSE	-	0.01	0.03	0.07	-	0.03	0.15	0.001	-	0.13	0.25	0.05
Total phosphorus												
	Observed	Clarianna			Observed	Dripsey			Observed	Oona Water		
		Estimated				Estimated				Estimated		
		SWAT	HSPF	GOPC		SWAT	HSPF	GOPC		SWAT	HSPF	GOPC
No. of days	143	143	143	143	166	166	166	166	365	365	365	365
R²	-	0.59	0.45	0.40	-	0.44	0.22	0.51	-	0.56	0.36	0.23
B%MSSE	-	0.03	0.25	0.01	-	0.03	0.01	0.03	-	0.03	0.001	0.11

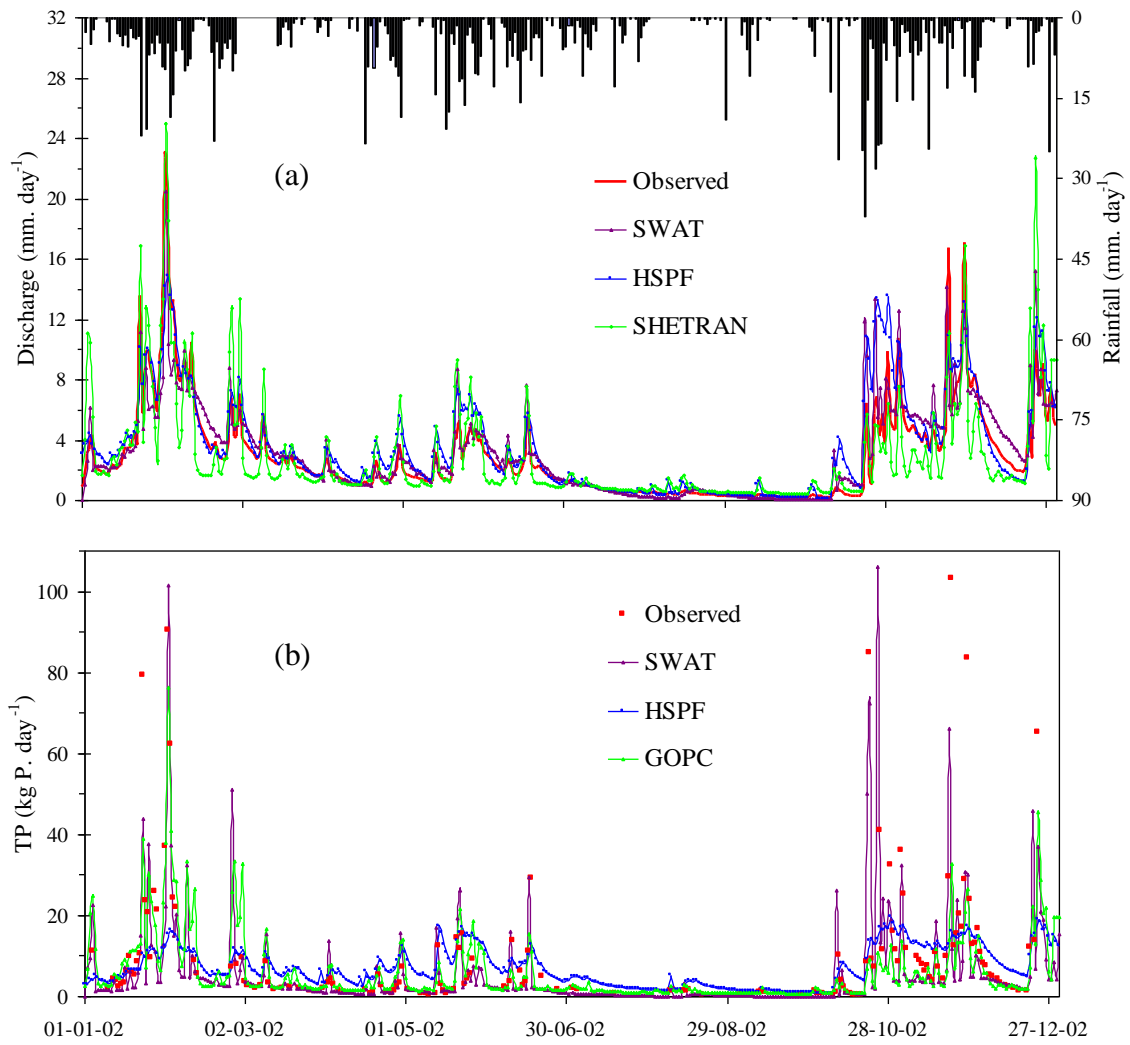
3
 4
 5 **Table (5) Values of total phosphorus export (kg P/annum) in the three study catchments**

Catchment	Observed	Estimates from each model				
		SWAT	HSPF	GOPC	DM	ECM
Clarianna	289	231	136	243	448	420
Dripsey	1719	1371	1530	1389	640	1512
Oona	27496	33285	25717	12519	22152	15046

1 **Figure (1) Clarianna catchment: Results of the three models (a) Flow, and (b) Total**
2 **phosphorus load**



1 **Figure (2) Dripsey catchment: Results of the three models (a) Flow, and (b) Total**
2 **phosphorus load**



1 **Figure (3) Oona Water catchment: Results of the three models (a) Flow, and (b)**
2 **Total phosphorus load**

