



Title	Modeling sea-level change using errors-in-variables integrated Gaussian processes
Authors(s)	Cahill, Niamh, Kemp, Andrew C., Horton, Benjamin P., Parnell, Andrew C.
Publication date	2015-06
Publication information	Cahill, Niamh, Andrew C. Kemp, Benjamin P. Horton, and Andrew C. Parnell. "Modeling Sea-Level Change Using Errors-in-Variables Integrated Gaussian Processes." Institute of Mathematical Statistics, June 2015. https://doi.org/10.1214/15-AOAS824 .
Publisher	Institute of Mathematical Statistics
Item record/more information	http://hdl.handle.net/10197/8032
Publisher's version (DOI)	10.1214/15-AOAS824

Downloaded 2026-05-01 23:42:59

The UCD community has made this article openly available. Please share how this access benefits you. Your story matters! (@ucd_oa)



© Some rights reserved. For more information

MODELING SEA-LEVEL CHANGE USING ERRORS-IN-VARIABLES INTEGRATED GAUSSIAN PROCESSES¹

BY NIAMH CAHILL^{*}, ANDREW C. KEMP[†], BENJAMIN P. HORTON^{‡,§}
AND ANDREW C. PARNELL^{*}

University College Dublin^{}, Tufts University[†], Rutgers University[‡]
and Nanyang Technological University[§]*

We perform Bayesian inference on historical and late Holocene (last 2000 years) rates of sea-level change. The input data to our model are tide-gauge measurements and proxy reconstructions from cores of coastal sediment. These data are complicated by multiple sources of uncertainty, some of which arise as part of the data collection exercise. Notably, the proxy reconstructions include temporal uncertainty from dating of the sediment core using techniques such as radiocarbon. The model we propose places a Gaussian process prior on the rate of sea-level change, which is then integrated and set in an errors-in-variables framework to take account of age uncertainty. The resulting model captures the continuous and dynamic evolution of sea-level change with full consideration of all sources of uncertainty. We demonstrate the performance of our model using two real (and previously published) example data sets. The global tide-gauge data set indicates that sea-level rise increased from a rate with a posterior mean of 1.13 mm/yr in 1880 AD (0.89 to 1.28 mm/yr 95% credible interval for the posterior mean) to a posterior mean rate of 1.92 mm/yr in 2009 AD (1.84 to 2.03 mm/yr 95% credible interval for the posterior mean). The proxy reconstruction from North Carolina (USA) after correction for land-level change shows the 2000 AD rate of rise to have a posterior mean of 2.44 mm/yr (1.91 to 3.01 mm/yr 95% credible interval). This is unprecedented in at least the last 2000 years.

1. Introduction. Sea-level rise poses a hazard to the intense concentrations of population and infrastructure that are increasingly located at the coast [Nicholls and Cazenave (2010)]. Effective mitigation and management of this hazard is reliant upon accurate estimation of historic, current, and future rates of sea-level rise. Data for estimating such rates come from instrumental measurements (tide gauges and satellites) and proxy reconstructions (derived from a wide variety of

Received July 2014; revised March 2015.

¹Supported in part by the Structured Ph.D. in Simulation Science which is funded by the Programme for Research in Third Level Institutions (PRTL) Cycle 5 and co-funded by the European Regional Development Fund, and the Science Foundation Ireland Research Frontiers Programme (2007/RFP/MATF281) and also supported by the National Oceanic and Atmospheric Administration award NA11OAR4310101 and NSF award EAR1402017 and OCE1458904. This paper is a contribution to PALSEA2.

Key words and phrases. Bayesian statistics, integrated Gaussian processes, errors-in-variables, proxy reconstruction, tide gauge.

palaeoenvironmental data including stratigraphical, biological, geochemical, and archaeological data). Instrumental data are more precise, but span the relatively short historic time period. Proxy reconstructions are less precise, but cover a much longer time interval. We use examples of both types of data to estimate rates of sea-level change with thorough quantification of uncertainty.

The instrumental data we use provides a historic time series of fixed and known ages with estimated sea levels and associated measurement errors. Although there are now ~ 2000 operational tide gauges worldwide [Jevrejeva et al. (2006), Woodworth and Player (2003)] that are located along coastlines and islands, most were installed since the 1950s. Therefore, global compilations rely on fewer gauges further back in time. The most widely used global tide-gauge compilation spans the period since 1880 AD [Church and White (2011)]. Since late 1992 AD, satellite altimetry measurements have further provided a global record of sea-level change [Cazenave and Llovel (2010), Nerem et al. (2010)]. Church and White (2011) demonstrate that there is good agreement (within uncertainty bounds) between their global mean sea-level (GMSL) record based on tide gauges and satellite altimetry measurements over the period from 1993 AD to 2009 AD. Thus, we use only the tide-gauge data as our instrumental record.

Proxy data provide sea-level reconstructions spanning hundreds to millions of years. Here we use late Holocene (last 2000 years) data to place modern rates of sea-level change in an appropriate context and characterize the relationship between climate and sea level. In our case study, we use proxy data that were pre-processed from their raw form (counts of species preserved within cores of coastal sediment) into estimates of sea level. We do not explore the preprocessing in this paper; see Birks (1995), Horton and Edwards (2006), Juggins and Birks (2012) for a discussion of how this was done. The resulting processed data are comprised of sea-level estimates that are irregularly spaced in time and have uncertain ages in addition to sea-level uncertainties.

Instrumental and proxy reconstructions both estimate relative sea level (RSL), which is the product of simultaneous land- and ocean-level changes. In the absence of tectonics, land-level changes primarily arise from the ongoing, slow rebound of the solid Earth to deglaciation [Peltier (2004)], which is called glacio-isostatic adjustment (GIA). Regions that were under the thickest ice at the last glacial maximum (between 26,000 and 19,000 years ago) are experiencing uplift (RSL fall), while areas that were peripheral to the ice sheet are experiencing subsidence (RSL rise). To compare sea-level measurements or reconstructions from different locations and to isolate the climate-related component of sea-level change, it is necessary to estimate and remove the contribution from GIA [Engelhart et al. (2009)]. The global tide-gauge data set that we use in this paper was already corrected for GIA [Church and White (2011)], but we must correct the proxy reconstruction. Since GIA is a rate (usually expressed in mm/yr), it affects older sediments more than younger sediments. This has repercussions for our model, because it introduces correlation between the individual age and sea-level reconstructions. We defer full discussion of this to Section 4.

To accurately estimate the evolution of rates of sea-level change through time and reliably compare instrumental compilations with proxy reconstructions, it is necessary to account for the uncertainties that characterize each data set. Previous studies used simple linear regression models (most commonly polynomial regression), resulting in overly precise rate estimates. We develop models to estimate rates of sea-level change and account for all available sources of uncertainty in instrumental and proxy-reconstruction data. Our response variable with the proxy measurements is sea level after correction for GIA. Our models place a Gaussian process (GP) prior on the rates of sea-level change and the mean of the distribution assumed for the observed data is the integral of this rate process. By embedding the integrated Gaussian process (IGP) model in an errors-in-variables (EIV) framework (which takes account of time uncertainty) and removing the estimate of GIA, we quantify rates with better estimates of uncertainty than was previously possible.

To demonstrate the application of these models, we apply them to an example global tide-gauge data set [Church and White (2011)]. Our analysis of this record indicates that the rate of GMSL rise increased continuously since 1880 AD and the posterior estimate of the mean rate of sea-level in 2009 AD is 1.92 mm/yr. The 95% credible interval for this mean is 1.84 to 2.03 mm/yr. We also apply the model to a late Holocene proxy reconstruction from North Carolina [Kemp et al. (2011)]. Such reconstructions are important to understand the response of sea level to known climate variability such as the Medieval Climate Anomaly and the Little Ice Age [Mann et al. (2008)]. Application of our model to the North Carolina proxy reconstruction indicates a posterior mean rate of rise in this locality since the middle of the 19th century of 2.44 mm/yr. The 95% credible interval for this mean is 1.91 to 3.01 mm/yr. This result is in agreement with results from the tide-gauge analysis and illustrates that the current rate of sea level is unprecedented in at least the last 2000 years. The two examples show the importance and utility of the new models in estimating dynamic rates of sea-level change with full and formal consideration of the uncertainties that characterize instrumental and proxy data sets.

2. Sea-level data sets. This section describes how the global tide-gauge record [Church and White (2011)] was compiled and how RSL in North Carolina was reconstructed using proxies preserved in cores of coastal sediment [Kemp et al. (2011)]. Although the methods for data collection are specific to our case studies, the resulting records are typical of available sea-level data sets.

2.1. Tide gauges. Tide gauges are instruments that measure RSL multiple times each day at a fixed coastal location. Monthly RSL averages for individual locations are held by the Permanent Service for Mean Sea Level [Woodworth and Player (2003)]. The distribution of these locations is very uneven in time and space. To reliably estimate rates and trends against a background of annual to decadal variability, analysis of individual tide-gauge records is commonly restricted to

locations with more than ~ 60 years of data [Douglas, Kearney and Leatherman (2001)]. GMSL is estimated by spatially averaging tide-gauge records after individual records (irrespective of record length) were corrected for GIA. The most commonly used data set is that of Church and White (2011), which includes annual sea-level data between 1880 AD and 2009 AD from up to 235 individual locations [Figure 1(A)]. This data set employed the spatial variability in sea level observed by satellites to interpolate between tide-gauge locations and estimate global sea level. Other studies produced alternative estimates of GMSL using different methodologies to correct for GIA and to account for the uneven distribution of tide gauges in time and space [e.g., Hay et al. (2015), Jevrejeva et al. (2008)]. However, each of these compilations shared the basic attributes of the Church and White (2011) data set in having a fixed and known age, but estimated GMSL with uncertainty. Therefore, our choice of example data set is typical of tide-gauge data, but our model could also be appropriately applied to similar data sets and potentially yield different estimates of rates of historical sea-level change.

2.2. Salt-marsh reconstructions. Salt marshes keep pace with sea-level rise by accumulating sediment [Morris et al. (2002)]. As a result, modern salt marshes may be underlain by several meters of sediment, which is an archive of past sea-level changes. Cores are used to recover this coastal sediment for analysis. The ages of discrete depths in the core are estimated using techniques such as radiocarbon dating to provide a history of sediment accumulation. Radiocarbon dates are calibrated into calendar ages and assimilated with other chronological constraints (e.g., pollution markers of known age) using an age-depth model.

For the North Carolina reconstruction [Figure 1(B)], ages for the RSL data were calculated from Bchron [Haslett and Parnell (2008), Parnell et al. (2008, 2011)], a Bayesian, statistical age-depth model that estimates uncertain interpolated ages between radiocarbon dated levels. This tool is particularly useful in reconstructing RSL from a core of coastal sediment, because most levels in the core were not directly dated. Bchron assumes that the calibrated radiocarbon ages arise as realizations of a Compound Poisson–Gamma (CPG) process, which enforces the geological law of superposition. Bchron calibrates the radiocarbon dates, estimates the parameters of the CPG and identifies outliers. The ages and 1 sigma age errors used in the North Carolina proxy reconstruction are the Bchron marginal means and standard deviations for each layer in the core that was used to reconstruct RSL, which we approximate as being normally distributed. This would be a poor assumption for individual calibrated radiocarbon dates that are skewed and multimodal. However, the CPG produces slightly more regular ages, and the effect is further reduced when combined with our smoothing approach.

Core sediment contains the preserved remains of microorganisms such as foraminifera. The distribution of foraminifera is controlled by tidal elevation (i.e., sea level) because some species are more tolerant of submergence by the tides than others [Scott and Medioli (1978)]. The modern, observable relationship between

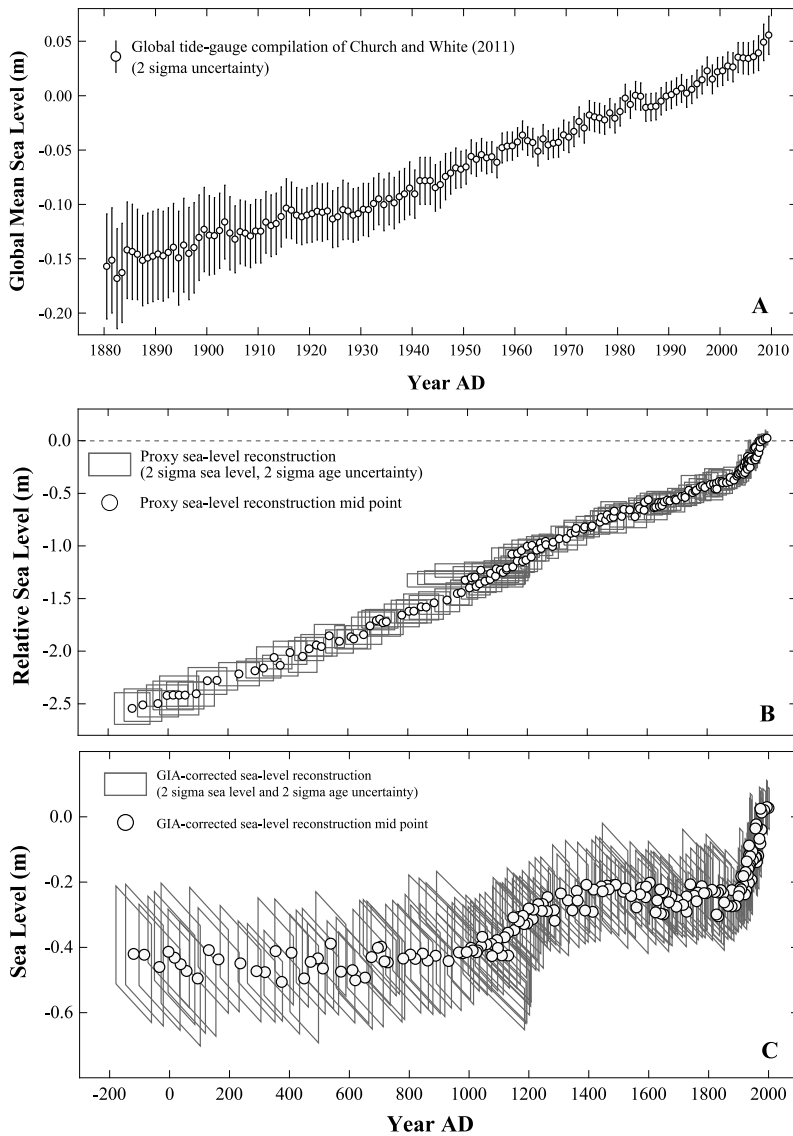


FIG. 1. (A) Global tide-gauge record of Church and White (2011). These global mean sea-level data are a compilation of individual tide-gauge records from sites located around the world that were individually corrected for the contribution of GIA. The data set is characterized by vertical (sea level) uncertainties (2 sigma uncertainty bands approximate the 95% confidence interval), but ages are fixed and known. (B) Proxy reconstruction of RSL from North Carolina, USA [Kemp et al. (2011)]. Individual data points (represented by rectangular boxes that illustrate the 95% confidence region) are unevenly distributed through time and include age and sea-level uncertainties. (C) The North Carolina reconstruction following correction for GIA.

counts of foraminifera and sea level provides an analogy for interpreting similar assemblages preserved in core material. This analogy is exploited to reconstruct RSL using a transfer function [Birks (1995), Horton and Edwards (2006), Juggins and Birks (2012), Kemp et al. (2013)]. The calibration of counts of foraminifera into estimates of RSL (via these transfer functions) requires further statistical modeling techniques that we do not discuss here. The transfer function output returns an estimate of the error associated with each fossil sample. This is given by the root mean square error of prediction of a training set, derived using a separate test set, or by internal cross-validation. We include these error estimates, assumed to be 1 sigma uncertainties, as an input to our model. The validity of this approach was demonstrated by comparison between reconstructions and instrumental measurements from nearby tide gauges [e.g., Kemp et al. (2009)]. To extract climate-driven rates of sea-level rise, the RSL reconstructions are corrected for GIA, which over the last 2000 years is assumed to be a constant rate because of the slow response time of the solid Earth [Peltier (2004)]. The GIA corrected reconstruction for North Carolina is shown in Figure 1(C).

3. Previous work. In this section we review how rates of sea-level change are estimated from uncertain data in existing literature. We also describe the stochastic methods that we employed in this paper.

3.1. Sea-level rise: Rates and accelerations. The motivation for analyzing tide-gauge records and reconstructing RSL is to establish how unusual modern rates of sea-level rise are in comparison to longer term trends and for understanding the role of climate variability as a driver of sea-level change [e.g., Donnelly et al. (2004), Engelhart et al. (2009), Shennan and Horton (2002)]. Comparisons of past and present rates are only complete and fair if all sources of uncertainty are accounted for. The global tide-gauge record is the primary source of historic and current sea-level data. The record includes sea-level uncertainty that is greater earlier in the record because it is based on fewer individual records that are unevenly distributed in space with a bias toward western Europe and North America [Jevrejeva et al. (2008)]. The age of each annual sea-level observation is fixed and known. Tide-gauge records are commonly analyzed using simple linear regression to estimate a rate of sea-level rise for the entire record or a shorter segment [e.g., Barnett (1984), Church and White (2006), Douglas, Kearney and Leatherman (2001), Gornitz, Lebedeff and Hansen (1982), Holgate and Woodworth (2004), Jevrejeva et al. (2014), Peltier and Tushingham (1991), Sallenger, Doran and How'd (2012)]. For example, Church and White (2011) calculated the mean rate of global sea-level rise to be $1.6 \text{ mm/yr} \pm 0.3 \text{ mm}$ from 1880 AD to 2009 AD compared to $1.1 \text{ mm/yr} \pm 0.7 \text{ mm}$ between 1880 AD and 1936 AD, and $1.8 \text{ mm/yr} \pm 0.3 \text{ mm}$ after 1936 AD. Satellite altimetry data have also been analyzed in this way to estimate a rate of GMSL rise of $3.4 \text{ mm/yr} \pm 0.4 \text{ mm}$ between 1993 AD and 2008 AD [Nerem et al. (2010)].

Similar approaches were widely employed to characterize acceleration or deceleration of sea-level rise, where a polynomial rather than linear function was fitted to the tide-gauge record [e.g., Boon (2012), Houston and Dean (2011), Jevrejeva et al. (2008), Woodworth et al. (2009)]. For example, Church and White (2011) estimated a sea-level acceleration of $0.009 \text{ mm/yr}^2 \pm 0.003 \text{ mm/yr}^2$ for the period 1880 AD to 2009 AD. In contrast, Houston and Dean (2011) obtained a small sea-level deceleration ($-0.0123 \pm 0.0104 \text{ mm/yr}^2$) by selectively analyzing U.S. tide gauges from 1930 AD to 2010 AD and suggested similar decelerations for the global data set over the same time interval. A limitation of subdividing the tide-gauge record into segments identified by visual inspection is that individual data points are ascribed undue importance and information is lost in the autocorrelated data set by discarding earlier and/or later intervals. Furthermore, the estimated rates of change are sensitive to the data included, making comparisons among data sets difficult. For example, the rate of sea-level change measured by satellite altimetry since 1993 AD is greater than the “current” (1936–2009 AD) rate often quoted from Church and White’s (2011) analysis of their global tide-gauge record. Although the estimated rates of change are different, Church and White emphasized the agreement between the two methods of measuring sea-level change over the period where both data sources are available.

In considering proxy reconstructions with bivariate uncertainties, some studies divided the data series into sections based on changes in slope that were qualitatively positioned by the researcher at a single time point [e.g., Gehrels and Woodworth (2013)]. Consequently, a rate of change was calculated for each segment of the sea-level reconstruction by simple linear regression of midpoints with no formal consideration of age and sea-level uncertainty or their covariance. Other studies used an EIV change point approach to objectively place changes in slope across a range of timings and to estimate linear rates for each segment with consideration of uncertainty [Kemp et al. (2011, 2013), Long et al. (2014)]. A limitation of this approach is that phases of persistent sea-level behavior are approximated by linear trends that do not accurately represent the underlying physics of sea-level change and mask (to some degree) the continuous evolution of sea level through time.

3.2. Stochastic processes and rate estimation. The model we propose makes use of the EIV approach, where we do not assume that the explanatory variable (which we denote as x) is known, but that it is instead measured with some error [Dey, Ghosh and Mallick (2000)]. The EIV approach can be used with multivariate and hierarchical models including our application to proxy sea-level reconstructions with age and sea-level errors. We embed our EIV regression within a nonparametric model.

We use a GP as a prior on the rate process, which is then integrated to estimate sea level. The opposite approach, where a GP is placed on the data itself and then differentiated to produce rates, has a long literature [Cramér and Leadbetter

(1967), O’Hagan (1992)], both where the derivatives were observed and where they were estimated. A fuller description of GPs is found in Williams and Rasmussen (1996) and Rasmussen and Williams (2006). Most recently in sea-level research, Kopp (2013) employed an empirical Bayesian analysis that used GPs to assess the statistical significance of the “hot spot” of sea-level acceleration in the mid-Atlantic and northeastern regions of the United States. Hay et al. (2015) use GPs for rate estimation and to assess the robustness of their probabilistic reanalysis of GMSL. However, GPs are not the only means for creating rate estimates. Other work exists in the field of splines [e.g., Chaniotis and Poulidakos (2004), Mardia et al. (1996)] or in diffusion processes and differential equation models [e.g., Liang and Wu (2008)].

We do not cover spatio-temporal modeling of sea-level rates in this paper, focusing instead on individual sites. The behavior of sea level in space is highly irregular and relates to numerous physical features and processes that are beyond the range of the statistical models we discuss. We focus on a novel EIV-IGP approach. The GP has advantages over other methods mentioned previously due to its simplicity and flexibility despite using only a small number of parameters. The IGP we employ is an inverse model where the GP is applied to the rate process rather than the observed data. Holsclaw et al. (2013) outline a method for posterior computation of such models which we employ in the next section.

4. Methods. In this section we outline the EIV-IGP model used to estimate past sea level while accounting for age uncertainty. We apply this model to the North Carolina proxy reconstruction in Section 5. Our first case study (the global tide-gauge record) requires a slightly simplified version of this model (which we term S-IGP), because the data has fixed and known ages and, therefore, lacks age uncertainty. The raw data are scalars $(y_i, \sigma_{y_i}, x_i, \sigma_{x_i})$ for $i = 1, \dots, n$ data points, where y_i is the RSL measurement and σ_{y_i} is the sample-specific estimate of uncertainty for the measurement which is one standard deviation, x_i is the estimated age measurement from the chronology model, and σ_{x_i} is the age standard deviation, also taken from the chronology model. Ignoring GIA correction for the moment, we can write

$$(4.1) \quad y_i = \alpha + h(\chi_i) + \varepsilon_i, \quad i = 1, \dots, N,$$

$$(4.2) \quad x_i = \chi_i + \delta_i, \quad i = 1, \dots, N,$$

where the errors $\varepsilon_i \sim N(0, \sigma_{y_i}^2 + \tau^2)$ are independent and τ^2 is a micro-scale variance term. Modelers sometimes separate the micro-scale variation using η which captures the micro-scale variation and ε which captures the pure measurement error [Banerjee and Fuentes (2012)]. The methods used to reconstruct sea level, described in Section 2.2, assume that the distribution of microorganisms such as foraminifera is controlled by tidal elevation (i.e., sea level). However, foraminifera abundances are also affected by other sources of noise [e.g., influence of additional

environmental variables such as salinity or sediment texture; Horton, Edwards and Lloyd (1999)]. As a result, it is necessary to include τ^2 in the model to account for any unexplained variation that may be present in the data. $\delta_i \sim N(0, \sigma_{x_i}^2)$, α is a constant intercept parameter, $h(\chi)$ is a stochastic process in continuous time that represents the underlying evolution of RSL and χ_i is the true unobserved age for observation i . The mean of the distribution for the observed data is dependent on the stochastic process that we want to estimate and the model is set up to have a classical EIV structure. The key parameters are those in h and the micro-scale variance τ^2 . The estimated true ages χ_i are nuisance parameters. Our focus lies in posterior inference about h and, most importantly, its derivative.

As discussed in Section 3.2, there are numerous nonparametric priors on functions that provide stochastic derivatives, though our situation is complicated by the inclusion of age uncertainties. If the data were modeled with a GP, we would write $y_i = \alpha + g(\chi_i) + \varepsilon_i$, where $g(\chi_i)$ is a GP with a mean function μ_g (which we set to 0) and a covariance function denoted $\nu^2 C_g(\chi_i, \chi_j)$. One approach to obtaining derivatives would be to fit the GP to the data and differentiate the correlation function. However, Holsclaw et al. (2013) outline how this approach can be inadequate due to loss of information when differentiating. They state that, if we fit the data process directly and then differentiate, we lose information about the derivative process, as, when observational error is present, the prediction of the derivative process is degraded [Stein (1999)]. Since our focus is directly on the rate process, $g'(\chi_i) = w(\chi_i)$, we prefer to place a GP prior distribution on this and integrate to create estimates of the mean of the observed data, which we now denote h .

Writing $h(\chi) = \int_0^\chi w(u) du$, we place a GP prior on w . The integration limits were simplified to start at 0 by readjusting x in the model setup. For our model we chose a GP with a mean function μ_w (which we set to 0) and a stationary powered-exponential covariance function, which we denote $C_w(\chi_i, \chi_j)$. The exponential covariance function is appropriate due to the underlying smooth nature of the sea-level data [abrupt changes in sea level are unlikely except in areas of instantaneous tectonic deformation such as those caused by megathrust earthquakes; e.g., Atwater (1987)]. We use a re-parameterized version so that $C_w(\chi_i, \chi_j) = \rho^{|\chi_i - \chi_j|^\kappa}$ with $\rho \in (0, 1)$ and $\kappa \in (0, 2]$. The distribution of the observed data process h is available also as a GP, where the covariance function for h can be obtained by integrating the covariance function for the derivative process (w) twice. The resulting covariance of the IGP is $K_h(\chi_i, \chi_j) = \int_0^{\chi_i} \int_0^{\chi_j} C_w(u, v) du dv$ and h created from such a situation will be nonstationary, which will allow for the smoothness of the function to vary with respect to the input space, resulting in a more flexible model.

A solution to the problematic double integration is provided by Holsclaw et al. (2013). They used an approach given in Yaglom (2011) to bypass the calculation of the double integral by approximating the integrated process on a grid $x^* = (x_1^* \cdots x_m^*)$ for arbitrarily large m . This yields

$$(4.3) \quad h(\chi) \approx K_{hw}^* C_w^{**^{-1}} w_m,$$

where $C_w^{**} = [C_w(x_i^*, x_j^*)]_{i,j=1}^m$ is an $m \times m$ matrix containing the covariance function for the derivative process and $w_m \sim \text{GP}(\mu_w, v^2 C_w^{**})$. Most usefully, K_{hw}^* is the covariance between the rate process and the integrated process, and so only involves integrating the covariance once, that is, $K_{hw}^*(\chi_i, x_j^*) = \int_0^{\chi_i} C_w(u, x_j^*) du$. This integral is calculated numerically, using Chebyshev–Gauss quadrature [Abramowitz and Stegun (1965)].

The Holsclaw et al. (2013) approach replaces the integral estimate with the conditional mean of the integrated process given the derivative process, while ignoring any conditional variance. This approach is strongly related to that of the predictive processes [PP: Banerjee et al. (2008)]. In the PP approach, a spatial covariance matrix is approximated onto a smaller grid also by its conditional mean, resulting in smaller matrix manipulations for large spatial problems. However, a significant disadvantage of the PP is that the low rank approximation can yield poor estimates of the correlation structure. By contrast, our processes are one dimensional and we can set the grid size m large to arbitrarily reduce the approximation error with little computational cost. In that sense it has elements in common with high-rank approximations such as Lindgren, Rue and Lindström (2011).

Last, we must account for GIA in our model for the proxy measurements. This introduces an extra fixed parameter γ (measured here in mm/yr) to account for land-level movements at an individual site. The GIA correction involves subtracting x_i from the year of core collection, denoted t_0 . This is then multiplied by the rate of GIA γ and added to y_i for each observation i . The introduction of the GIA parameter raises or lowers the sea level associated with each data point, and additionally introduces a correlation between the age and sea-level reconstructions since older sea-level observations are raised/lowered to a greater degree. As an illustration, consider the single example from the North Carolina proxy reconstruction shown in Figure 2(A). The data point is given by the quadruple $(y_i, x_i, \sigma_{x_i}, \sigma_{y_i})$ with the density of this data point represented as contours, and samples shown for illustration. Once the GIA effect is removed, we obtain Figure 2(B), where the left-hand side of the density has been raised to a greater degree than the right-hand side because it is older.

Algebraically, the GIA effect can be removed via an affine transformation of the data and the variance matrix by matrices $A = \begin{bmatrix} 1 & 0 \\ -\gamma & 1 \end{bmatrix}$ and $b = \begin{bmatrix} 0 \\ \gamma t_0 \end{bmatrix}$. The GIA-corrected model is now

$$(4.4) \quad Az_i + b \sim N(\mu_i, AV_iA^T + \tau^2 B), \quad i = 1, \dots, N,$$

where $z_i = \begin{bmatrix} x_i \\ y_i \end{bmatrix}$, $\mu_i = \begin{bmatrix} \chi_i \\ \alpha + h(\chi_i) \end{bmatrix}$, $V_i = \begin{bmatrix} \sigma_{x_i}^2 & 0 \\ 0 & \sigma_{y_i}^2 \end{bmatrix}$ and $B = \begin{bmatrix} 0 & 0 \\ 0 & 1 \end{bmatrix}$. Since Az_i and AV_iA^T are both deterministic functions of the data, they can be calculated off-line prior to any analysis.

The rate of GIA to be applied is spatially variable because of the underlying physical process [Engelhart et al. (2009)]. For our North Carolina case study,

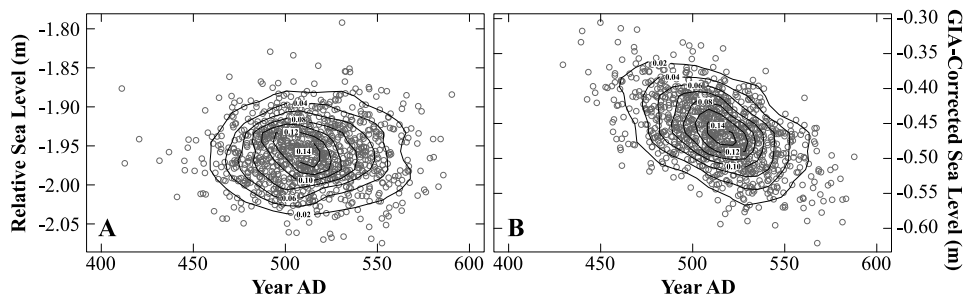


FIG. 2. Example of correcting a single data point in the North Carolina proxy sea-level reconstruction for the effect of GIA. $N=1000$ data points were simulated from the bivariate distribution of the RSL reconstruction before (A) and after (B) it was corrected for GIA. Since GIA is a rate (in mm/yr), this correction results in bivariate correlated errors.

where there are two sites, we apply the rates of 0.9 mm/yr and 1 mm/yr that were used in the original publication. Equation (4.4) forms the likelihood for the observed data based on the EIV-IGP model. This completes our model specification.

All the models we outline were fitted in the JAGS (Just Another Gibbs Sampler) language [Plummer (2003)]. JAGS is a tool for analysis of Bayesian hierarchical models using Markov Chain Monte Carlo (MCMC) simulation. Although writing customized MCMC sampling algorithms can in some cases be relatively straightforward, it has become more common practice to make use of Bayesian MCMC fitting software such as the Bayesian analysis Using Gibbs Sampling (BUGS) software. JAGS is an engine for running BUGS and allows users to write their own functions, distributions and samplers. JAGS offers cross-platform support and a direct interface to R using the package rjags [Plummer (2014)].

We validated our model using two methods. First, we simulated data under ideal and nonideal conditions. The ideal scenario is one where the parameters are simulated from the same distributions as the priors that are placed on the parameters. The nonideal scenarios lead to the prior distributions over/underestimating the mean and the variance of the parameters. The aim was to determine, for each scenario, the coverage probabilities for the true rate process within 95% and 68% credible intervals. Second, we performed a 10-fold cross-validation on our case study data. Results were highly satisfactory for both validation methods and we are confident that using this model for instrumental and proxy sea-level data allows us to estimate the underlying rates of sea-level change with a high degree of accuracy. Further details of how the validation was carried out along with results can be found in the Appendix. All code is available in the supplementary materials [Cahill et al. (2015)].

5. Case studies. In this section we outline our prior distributions in further detail for each of our case studies. In the first case study we use tide-gauge mea-

surements which have small age uncertainties and so are ignored, effectively removing the EIV structure and allowing us to demonstrate the IGP aspect of the model. Our second case study, the proxy data, contains all the elements outlined in this section. To illustrate the utility of the S-IGP and EIV-IGP models, we apply them to the global tide-gauge record since 1880 AD [Church and White (2011)] and a proxy RSL reconstruction spanning the last 2100 years [Kemp et al. (2011)]. The goal is to obtain the posterior distribution of sea level and of the rate process of interest.

For both case studies we initially ran the appropriate model for 5000 iterations with a burn-in of 500 that we thinned by 3. In both cases we saw good convergence. We then ran the model for a long run of 50,000 iterations to ensure convergence remained and results were consistent. The R package coda [Plummer et al. (2006)] was used to run diagnostics. We used autocorrelation plots, Geweke plots [Geweke (1992)], the Gelman and Rubin diagnostic [Gelman and Rubin (1992)] and the Heidelberger and Welch diagnostic [Heidelberger and Welch (1983)], which all indicated model convergence. We also ran multiple chains from different starting values to ensure good mixing.

5.1. *Global tide-gauge record.* A complete description of the approach and methods employed to generate this data set is presented in Church and White (2006, 2011). The data file includes 3 columns: time in years AD, GMSL in meters, and a one-sigma sea-level error in meters.

The Simple Integrated Gaussian Process (S-IGP) model was used to analyze this data set. The distribution for the observed data is

$$(5.1) \quad y_i \sim N(\alpha + h(x_i), \sigma_{y_i}^2 + \tau^2),$$

$$(5.2) \quad h(x) \approx K_{hw}^* C_w^{**^{-1}} w_m,$$

where $h(x)$ is the approximation to the IGP described in Section 4. $C_w^{**} = \rho^{|x_i^* - x_j^*|^\kappa}$ is an $m \times m$ matrix containing the covariance function for the derivative process and $w_m \sim \text{GP}(\mu_w, \nu^2 C_w^{**})$. Recall, K_{hw}^* is the covariance between the rate process and the integrated process, that is, $K_{hw}^*(x_i, x_j^*) = \int_0^{x_i} C_w(u, x_j^*) du$.

Prior distributions were specified for each unknown parameter. The correlation parameter ρ was defined on the interval $(0, 1)$. The tide-gauge record [Church and White (2011)] spans a relatively short period of time, during which there was a single mode of climate warming and sea-level rise [Rahmstorf (2007)]. So even though this record is highly correlated, climate forcing, as opposed to time change, is the driver for sea-level change over this instrumental period. Therefore, we set a mildly informative prior for ρ that favors low values of the correlation parameter that are close to 0.2, where $p(\rho) = \text{Beta}(2, 8)$. Another somewhat informative prior was used for τ^2 . To determine a prior for this parameter, we considered other global tide-gauge compilations such as Jevrejeva et al. (2008). The data supplied

for this record have associated standard errors for each sea-level measurement. Details of how these errors are determined can be found in [Jevrejeva et al. \(2006\)](#). These standard errors range from 0.01–0.07 m. In choosing our prior we used this information, but we do not restrict τ to be within this range, instead we chose to conservatively place a prior on τ^2 that favors values for τ close to 0.1 m, where $\tau^2 \sim \text{Gamma}(0.1, 10)$.

We decided on a prior for v^2 , the variance of the rate process, by looking at the information currently available regarding the rate of global sea-level rise. Between 1950 AD and 2000 AD trends in global average rates of sea-level rise varied from 0 to 4 mm/yr [[White, Church and Gregory \(2005\)](#)]. Over multi-centennial timescales during the last 2000 years (prior to industrialization), global sea level was likely close to stable after correction for land-level movements (i.e., rate ~ 0 mm/yr). Alternatively, at decadal to multi-decadal time scales, higher regional rates (up to 4 mm/yr) are observed in instrumental records after correction for land-level movements. A GP prior centered on 0 was used to describe the rate process for our model. The prior information suggests that rates can reach up to 4 mm/yr. Therefore, we deemed the range of the rate of sea level, -4 to 4 mm/yr, appropriate. If this range is treated as a 95% confidence interval, it is reasonable to assume that the standard deviation is ~ 2 mm/yr. Hence, we set up the prior for v^2 to favor values close to 4, where $v^2 \sim \text{Gamma}(80, 20)$. An uninformative normal prior is placed on the unknown intercept parameter α .

The analysis of the global tide-gauge record is presented in Figure 3, which shows the GMSL predictions estimated from our model (A) and our rate estimates (B). The rate of GMSL rise estimated from a linear regression analysis of the global tide-gauge record for the entire period 1880 AD to 2009 AD was 1.5 mm/yr [[Church and White \(2006\)](#)]. This is consistent with the average rate suggested in Figure 3(B). The rate of sea-level rise from 1900 AD to 2009 AD was 1.7 mm/yr ± 0.3 mm [[Church and White \(2006\)](#)]. The S-IGP model indicates that this rate occurred from approximately 1965 AD to 1975 AD. Furthermore, the model indicates that the rate of GMSL rise actually increased (accelerated) constantly through time from 1.13 mm/yr in 1880 AD to 1.92 mm/yr in 2009 AD [Figure 3(B)]. The recognition of accelerating sea-level rise agrees with projections for the 21st century that can only be realized with continued acceleration [[IPCC \(2013\)](#)]. We demonstrate that the S-IGP model negates the need to analyze specific intervals of temporal data and consequently provides more accurate and representative estimates of the constantly evolving rate of sea-level change.

5.2. North Carolina proxy reconstruction. The example data set from North Carolina is a proxy reconstruction spanning the last ~ 2100 years that was developed from cores of salt-marsh sediment located at two sites (Tump Point, $34^{\circ}58'12''\text{N}$ $76^{\circ}22'48''\text{W}$; and Sand Point, $35^{\circ}53'05''\text{N}$ $75^{\circ}40'51''\text{W}$) that are 120 km apart [[Kemp et al. \(2011\)](#)]. As such, it provides a regional record of

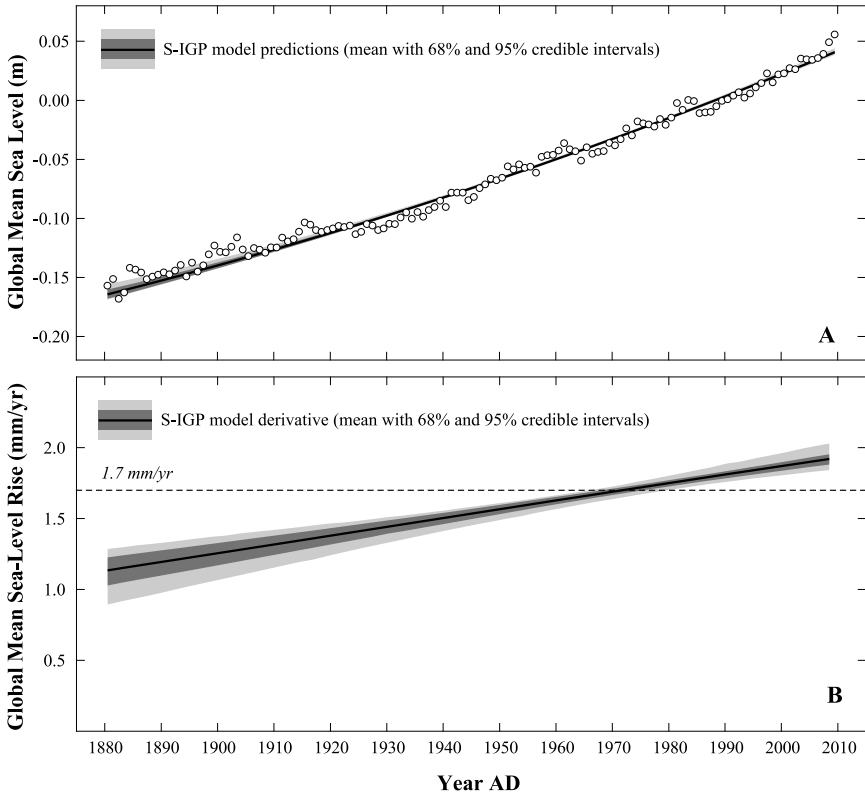


FIG. 3. (A) Predictions for GMSL since 1880 AD generated by fitting the S-IGP model to the instrumental data set. Shading denotes 68% and 95% credible intervals for the posterior mean fit. (B) Rate of global sea-level rise calculated as the derivative of the fitted model. Shading denotes 68% and 95% credible intervals for the posterior mean of the rate process.

RSL change for North Carolina. The correction for GIA was estimated from a regional database of late Holocene relative sea-level reconstructions [Engelhart et al. (2009)]. The rate of GIA is 0.9 mm/yr at Tump Point and 1.0 mm/yr at Sand Point. The data file includes 4 columns: RSL in meters, age in year AD, a one-sigma RSL error, and a two-sigma age error.

The EIV-IGP model, described in detail in Section 4, was used to analyze this data set. Prior distributions were specified for each unknown parameter. As with the S-IGP model, the correlation parameter ρ is defined on the interval (0, 1). The chosen prior $p(\rho) = \text{Beta}(2, 8)$, which suggests a mean of approximately 0.2 with a standard deviation of approximately 0.1. This assumes that data points more than 1000 years apart have minimal effect on one another. This is a reasonable assumption given that the reconstruction spans a 2100 year time period and includes multiple phases of sea level and climate behavior, including the warmer Medieval Climate Anomaly, cooler Little Ice Age, and very warm 20th and 21st centuries

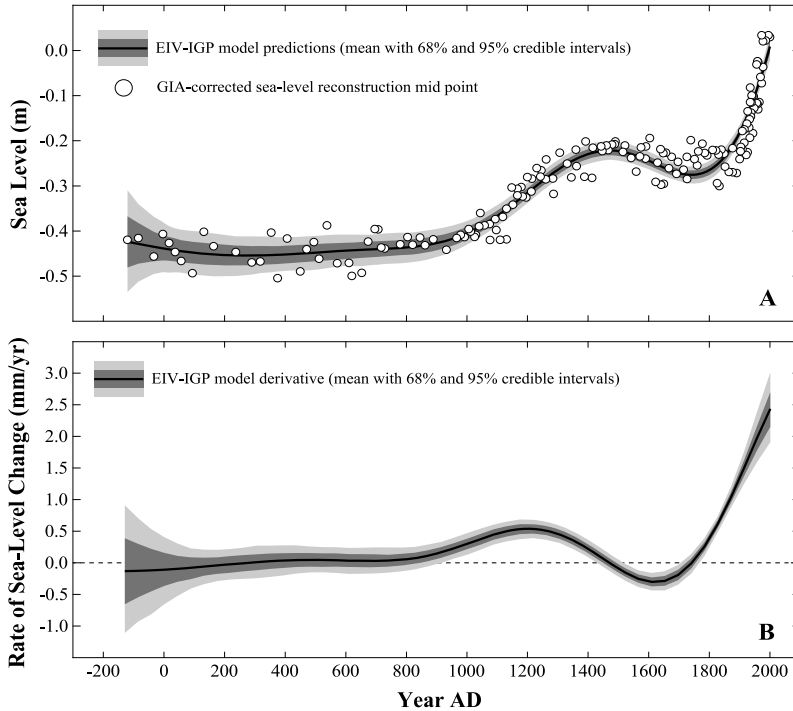


FIG. 4. (A) Predictions for North Carolina sea level generated by fitting the EIV-IGP model. Shading denotes 68% and 95% credible intervals for the posterior mean fit. (B) Rate of sea-level change in North Carolina calculated as the derivative of the fitted model. Shading denotes 68% and 95% credible intervals for the posterior mean of the rate process.

[Mann et al. (2008)]. We used the same prior for the variance parameter τ^2 as for the previous case study. Following the same reasoning as with the tide-gauge data in Section 5.1, a gamma prior, $v^2 \sim \text{Gamma}(80, 20)$, was used for the variance of the derivative process. An uninformative normal prior was placed on the unknown intercept parameter α .

Application of the EIV-IGP model to the proxy sea-level reconstruction from North Carolina shows four persistent phases of sea-level behavior [Figure 4(A)]. The model predictions are a good fit to the proxy reconstructed data which gives confidence in the model. From the start of the record at approximately 100 BC to 1000 AD there is little change in sea level following correction for GIA. The period from 1000 AD to 1400 AD is characterized by sea-level rise. Between 1400 AD and about 1850 AD there was a fall in sea level and since 1850 AD sea level rose rapidly in North Carolina. This evolution in sea level is reflected in the modeled rate of sea-level rise [Figure 4(B)], where the first period has a mean sea-level change of approximately 0 mm/yr. The second period saw a maximum rate of rise reach a posterior mean value of 0.53 mm/yr with a 95% credible interval for this mean of 0.39 to 0.68 mm/yr, which Kemp et al. (2011) attributed to a

warmer climate during the Medieval Climate Anomaly. The sea-level fall between 1400 AD and 1850 AD occurred at a maximum rate of 0.3 mm/yr with a 95% credible interval for this mean of 0.16 to 0.43 mm/yr and was likely a sea-level response to the cooler Little Ice Age [Kemp et al. (2011)]. The transition from the Little Ice Age is marked by a dramatic increase in the rate of sea-level rise that continues to a mean rate of 2.44 mm/yr in 2000 AD with a 95% credible interval of 1.91 to 3.01 mm/yr. The rate of sea-level rise since the middle of the 19th century is without precedent in North Carolina for at least the previous 2000 years. The modeled mean rate of rise departs from earlier 95% credible intervals at around 1845 AD.

6. Conclusion. Taking into account all sources of uncertainty (temporal and vertical) when estimating sea-level trends is essential to allow instrumental measurements and proxy reconstructions of sea level to be compared directly and fairly. Previous analysis incorrectly ignored some or all of the uncertainties. We proposed and validated a model that allows for the direct estimation of rates of sea-level change while quantifying uncertainties more thoroughly than previously possible. The method involves a nonparametric reconstruction of the derivative process. A GP prior is placed on the derivative process and we view the mean of the distribution assumed for the observed data to be the integral of this process. For our case study data, the derivative at a particular time point is representative of the rate of sea-level change at that time point. This enables us to estimate instantaneous rates of change and observe the constant evolution of dynamic sea-level rise through time. The model also provides a flexible fit and allows us to estimate the uncertainty about the rate process of interest.

Our analysis of the global tide-gauge record shows that the rate of GMSL rise increased (accelerated) continuously from 1.13 mm/yr in 1880 AD to 1.92 mm/yr in 2009 AD. Application of our model to an example proxy sea-level reconstruction from North Carolina quantified the changing rate of sea-level rise through the Medieval Climate Anomaly, Little Ice Age and 20th century. The posterior mean rate of rise in North Carolina at 2000 AD was 2.44 mm/yr with a 95% credible interval of 1.91 to 3.01 mm/yr. This is the fastest rate of rise in the 2000-year long reconstruction.

APPENDIX: MODEL VALIDATION

A.1. Simulated scenarios. In this section we demonstrate the validity of our model. Through the use of simulated data, parameters α and τ^2 (see Section 4), proved to be robust. Within reason, there was no difficulty in estimating the values of these parameters, regardless of prior choice. We found the parameters that related to the GP, that is, σ_g^2 and ρ , were the more sensitive parameters in the model and, as a result, the validation focused on these. For the purposes of this validation we used a simpler model, that is, the version that is not set in the EIV

framework. The parameters that were introduced in cases where an errors-in variables approach was necessary were all estimated directly from the data and, thus, we excluded this component of the model in the validation process in order to simplify things. Therefore, the data was simulated from the following distribution:

$$(A.1) \quad y_i \sim N(\alpha + h(x_i), \tau^2), \quad i = 1, \dots, N,$$

$$(A.2) \quad h(x_i) \approx K_{hw}^* C_w^{**^{-1}} w_m,$$

where $C_w^{**} = [C_w(x_i^*, x_j^*)]_{i,j=1}^m$ is an $m \times m$ matrix containing the covariance function for the derivative process and $w_m \sim GP(\mu_w, v^2 C_w^{**})$. K_{hw}^* is the covariance between the rate process and the integrated process.

To validate the model, we considered several different scenarios under ideal and nonideal conditions. For each scenario we simulated values for the unknown parameters, which in turn were used to simulate data from an integrated GP model. Data simulation required simulation of the underlying rate process, which, based on our model assumptions, is a GP. Therefore, we knew the true underlying rate process. As the focus of this work is in establishing rates of sea-level change, our primary concern was whether or not our model was successful in estimating the true underlying rate process. We observed how often the true rate falls within the 95% and 68% credible intervals for the rate predicted from the model.

For the purposes of this validation, the priors that were placed on the parameters σ_g^2 and ρ were $\sigma_g^2 \sim \text{gamma}(10, 10)$ and $\rho \sim \text{beta}(2, 8)$. Therefore, σ_g^2 will be centered around 1 with a variance of 0.1 and ρ will be centered around 0.2 with a variance of 0.01. In scenario (a) the parameter values came from the same distributions as our priors. This was the ideal case and we expected the model to perform best under these conditions. In scenarios (b) and (c) we simulated the parameters so that our prior assumptions were underestimating/overestimating the means, respectively. In scenarios (d) and (e) we simulated parameter values so that our prior assumptions were underestimating/overestimating the variances, respectively. Finally, for scenarios (f) and (g) we simulated parameter values so that our prior assumptions were underestimating/overestimating both the mean and variances. 500 simulations were run for each scenario. The 95% and 68% coverage probabilities were observed. An average over the 500 simulations was taken for our validation results. The results of this validation are shown in Table 1.

The model was capable of estimating the rate process, even if the prior distributions for the parameters were over/underestimating means and variances. For the ideal scenario the true rate fell within the 95% credible interval and 68% credible interval of the estimated rate approximately 95% and 68% of the time as expected. For scenarios (b) and (e) the rate fell into the credible intervals a higher proportion of the time. This suggests that underestimating the mean values of our

TABLE 1
Validation results for simulated scenarios (a)–(g)

Scenario	Simulated σ_g^2		Simulated ρ		Coverage probability (95% CI)	Coverage probability (68% CI)
	Mean	Var	Mean	Var		
(a) (Ideal)	1	0.1	0.2	0.01	0.954	0.679
(b)	2	0.1	0.2	0.01	0.969	0.733
(c)	0.5	0.1	0.1	0.01	0.931	0.656
(d)	1	0.5	0.2	0.1	0.868	0.604
(e)	1	0.02	0.2	0.001	0.963	0.715
(f)	2	0.5	0.4	0.1	0.962	0.716
(g)	0.5	0.02	0.1	0.001	0.936	0.661

parameters or overestimating the variance of our parameters will result in wider than expected credible intervals for the rate. For scenarios (c) and (d) the rate fell into the credible intervals a lower proportion of the time. This suggests that overestimating the mean values of our parameters or underestimating the variance of our parameters will result in narrower credible intervals than expected for the rate.

For scenario (f) the rate fell into the 95% and 68% credible intervals more than 95% and 68% percent of the time. For this scenario the priors were underestimating both the mean and variance for the parameters of interest. From the cases where the mean and variance were underestimated separately [i.e., (b) and (d)], the results were wider credible intervals and narrower credible intervals, respectively. Comparing these results with case (f), it appears that underestimating the mean dictated the results and caused the credible interval for the rate to be wider than expected. For scenario (g) the true rate falls into the 95% and 68% credible interval less than 95% and 68% of the time. In this case, when the means and variances were overestimated [i.e., (c) and (e)], the results indicated narrower and wider credible intervals, respectively. When compared with scenario (g), this suggested that overestimating the means dictated the results and caused the credible intervals to be narrower than expected.

From this validation we are made aware of some of the consequences of mis-specifying prior distributions for the parameters σ_g^2 and ρ in our model. The results indicated that although for all of the cases excluding the ideal scenario we overestimate or underestimate our confidence around the rate, we do not over/underestimate the credible intervals by enough to cause concern.

A.2. 10-fold cross-validation. A second method we used to validate our model was a 10-fold cross-validation. We performed this on both our case study data sets. Each observation was numbered 1 : N , where N was the total number of

observations. A random permutation of these numbers was taken using a function in R. The first 10% of these numbers were taken and the corresponding observations were removed from the data. The model was run on the data with these observations missing. We then used the model results to predict values for our missing observations.

By definition, the observed data is an integral of the rate process. Therefore, by integrating the rate process that we obtained from running the model, at the points where we had missing data, we obtained predictions for our missing data. We took sample paths from the posterior estimates of the rate process (we used 500 samples) and integrated these sample rate curves at the places where we removed the observations. This provided us with 500 samples of posterior predictions for each of the missing data points. From these samples we determined the mean and standard deviations for each prediction and used this information to approximate a mean prediction and a 95% prediction interval. Note, there is some variation in the prediction intervals from sample to sample due the credible intervals for the rate process varying slightly depending on which samples were removed.

The cross-validation was carried out for both case study data sets. In Figure 5 we plot the true sea-level observations versus the posterior estimates of the mean predictions and their 95% prediction intervals. We performed the cross-validation for our IGP models in comparison to a simplistic least squares regression (LSR) model for both case studies. The results are displayed in Figures 6 and 7 for the global tide-gauge data set of Church and White (2011) and the North Carolina proxy measurements of Kemp et al. (2011), respectively.

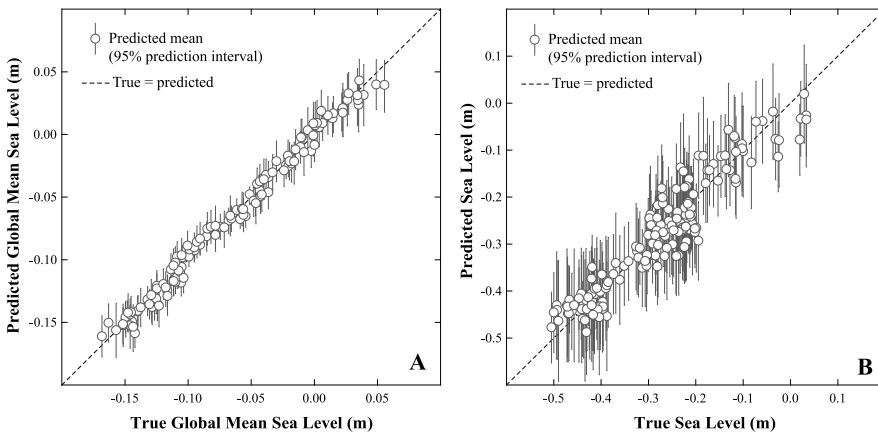


FIG. 5. *True vs Predicted.* (A) results for Church and White (2011) global tide-gauge compilation. (B) shows the results for the North Carolina proxy reconstruction.

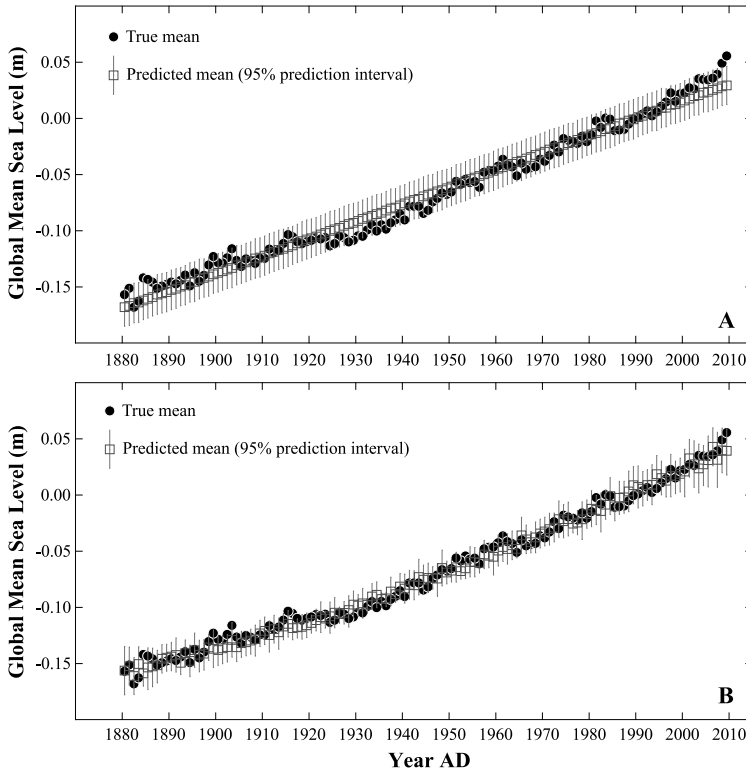


FIG. 6. Cross-validation for Church and White. Panel (A) shows predicted means for each sea-level observation and their 95% prediction intervals, overlaid on the true data, using a LSR modeling approach. Panel (B) shows the same results using an S-IGP approach.

To assess the prediction intervals, we used the interval score in equation (A.3) proposed by Gneiting and Raftery (2007):

$$(A.3) \quad S_{\alpha}^{\text{int}}(l, u; x) = (u - l) + \frac{2}{\alpha}(l - x)1\{x < l\} + \frac{2}{\alpha}(x - u)1\{x > u\},$$

where l and u are the upper and lower bounds of the prediction interval and x is the true value we are trying to predict. The resulting score is negatively oriented and we wanted to minimize the result. The score rewards for narrow prediction intervals and penalizes if the observation misses the interval. Table 2 shows the empirical coverage (% of time the true observation fell within the prediction interval), the average width of all the prediction intervals and the average interval score for the prediction intervals.

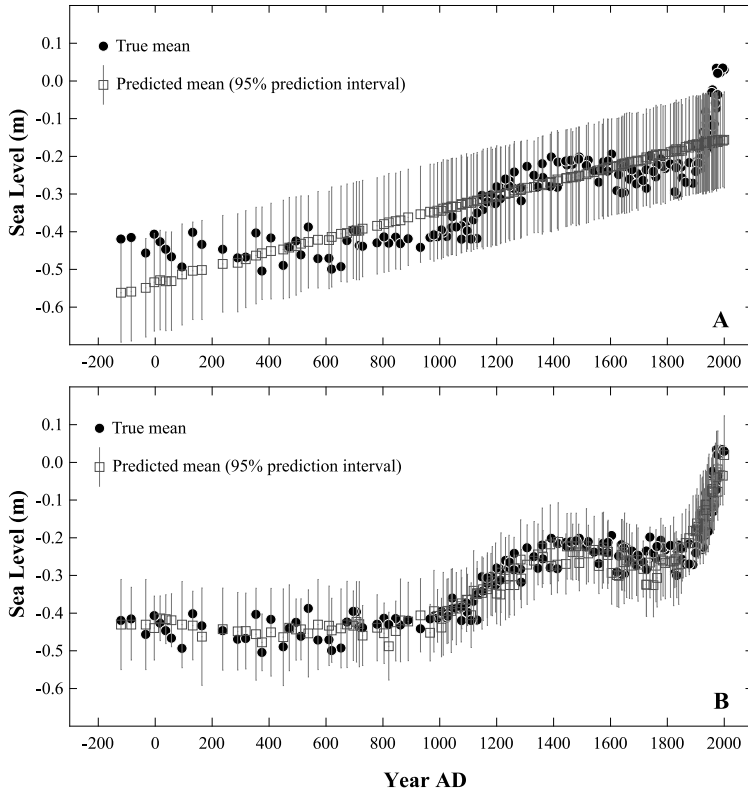


FIG. 7. Cross-validation for North Carolina. Panel (A) shows predicted means for each sea-level observation and their 95% prediction intervals, overlaid on the true data, using a LSR modeling approach. Panel (B) shows the same results using an EIV-IGP approach.

TABLE 2
Scoring results for the 95% prediction intervals estimated for each observation in the 10-fold cross-validation

Data	Model	Empirical coverage	Average interval width	Average interval score
C&W	LSR	97.69%	0.035	0.039
C&W	S-IGP	95.34%	0.027	0.032
N. Carolina	LSR	93.53%	0.256	0.340
N. Carolina	EIV-IGP	95.27%	0.182	0.198

Acknowledgments. We are grateful to the Editor Tilmann Gneiting, the Associate Editor and the two anonymous reviewers for their comments that greatly improved the early version of the paper. We would also like to thank Professor John Haslett for his comments and suggestions and Professor Adrian Raftery for his help with the interval scoring rules.

SUPPLEMENTARY MATERIAL

Data and code (DOI: [10.1214/15-AOAS824SUPP](https://doi.org/10.1214/15-AOAS824SUPP); .zip). We provide the tide-gauge and proxy reconstructed data for both case studies. We also supply the R code and JAGS code needed to run the S-IGP and EIV-IGP models described.

REFERENCES

- ABRAMOWITZ, M. and STEGUN, I. (1965). *Handbook of Mathematical Functions*. Dover, New York.
- ATWATER, B. F. (1987). Evidence for great holocene earthquakes along the outer coast of Washington state. *Science* **236** 942–944.
- BANERJEE, S. and FUENTES, M. (2012). Bayesian modeling for large spatial datasets. *Wiley Interdisciplinary Reviews: Computational Statistics* **4** 59–66.
- BANERJEE, S., GELFAND, A. E., FINLEY, A. O. and SANG, H. (2008). Gaussian predictive process models for large spatial data sets. *J. R. Stat. Soc. Ser. B. Stat. Methodol.* **70** 825–848. [MR2523906](https://doi.org/10.1111/j.1467-9868.2008.00606.x)
- BARNETT, T. P. (1984). The estimation of global sea level change: A problem of uniqueness. *Journal of Geophysical Research: Oceans* **89** 7980–7988.
- BIRKS, H. J. B. (1995). Quantitative palaeoenvironmental reconstructions. In *Technical Guide 5* 161–254. Quaternary Research Association, Cambridge.
- BOON, J. D. (2012). Evidence of sea level acceleration at U.S. and Canadian tide stations, Atlantic Coast, North America. *Journal of Coastal Research* **28** 1437–1445.
- CAHILL, N., KEMP, A. C., HORTON, B. P. and PARNELL, A. C. (2015). Supplement to “Modeling sea-level change using errors-in-variables integrated Gaussian processes.” DOI:[10.1214/15-AOAS824SUPP](https://doi.org/10.1214/15-AOAS824SUPP).
- CAZENAVE, A. and LLOVEL, W. (2010). Contemporary sea level rise. *Annual Review of Marine Science* **2** 145–173.
- CHANIOTIS, A. K. and POULIKAKOS, D. (2004). High order interpolation and differentiation using B-splines. *J. Comput. Phys.* **197** 253–274. [MR2061246](https://doi.org/10.1016/j.jcp.2004.02.010)
- CHURCH, J. A. and WHITE, N. J. (2006). A 20th century acceleration in global sea-level rise. *Geophysical Research Letters* **33**.
- CHURCH, J. A. and WHITE, N. J. (2011). Sea-level rise from the late 19th to the early 21st century. *Surveys in Geophysics* **32** 585–602.
- CRAMÉR, H. and LEADBETTER, M. R. (1967). *Stationary and Related Stochastic Processes. Sample Function Properties and Their Applications*. Wiley, New York. [MR0217860](https://doi.org/10.1002/9781118130400)
- DEY, D. K., GHOSH, S. K. and MALLICK, B. K., eds. (2000). *Generalized Linear Models: A Bayesian Perspective. Biostatistics* **5**. Dekker, New York. [MR1893779](https://doi.org/10.1002/9781118130400)
- DONNELLY, J. P., CLEARY, P., NEWBY, P. and ETTINGER, R. (2004). Coupling instrumental and geological records of sea-level change: Evidence from southern New England of an increase in the rate of sea-level rise in the late 19th century. *Geophysical Research Letters* **31** L05203.
- DOUGLAS, B. C., KEARNEY, M. S. and LEATHERMAN, S. P. (2001). *Sea-Level Rise: History and Consequences*. Academic Press, San Diego, CA.

- ENGELHART, S. E., HORTON, B. P., DOUGLAS, B. C., PELTIER, W. R. and TORNVIST, T. E. (2009). Spatial variability of late Holocene and 20th century sea level rise along the Atlantic coast of the United States. *Geology* **37** 1115–1118.
- GEHRELS, W. R. and WOODWORTH, P. L. (2013). When did modern rates of sea-level rise start? *Global and Planetary Change* **100** 263–277.
- GELMAN, A. and RUBIN, D. B. (1992). Inference from iterative simulation using multiple sequences (with discussion). *Statist. Sci.* **7** 457–472.
- GEWEKE, J. (1992). Evaluating the accuracy of sampling-based approaches to the calculation of posterior moments. In *Bayesian Statistics, 4 (Peñíscola, 1991)* 169–193. Oxford Univ. Press, New York. [MR1380276](#)
- GNEITING, T. and RAFTERY, A. E. (2007). Strictly proper scoring rules, prediction, and estimation. *J. Amer. Statist. Assoc.* **102** 359–378. [MR2345548](#)
- GORNITZ, V., LEBEDEFF, S. and HANSEN, J. (1982). Global sea level trend in the past century. *Science* **215** 1611–1614.
- HASLETT, J. and PARNELL, A. C. (2008). A simple monotone process with application to radiocarbon-dated depth chronologies. *J. R. Stat. Soc. Ser. C. Appl. Stat.* **57** 399–418. [MR2526125](#)
- HAY, C. C., MORROW, E., KOPP, R. E. and MITROVICA, J. X. (2015). Probabilistic reanalysis of twentieth-century sea-level rise. *Nature* **517** 481–484.
- HEIDELBERGER, P. and WELCH, P. D. (1983). Simulation run length control in the presence of an initial transient. *Oper. Res.* **31** 1109–1144.
- HOLGATE, S. J. and WOODWORTH, P. L. (2004). Evidence for enhanced coastal sea level rise during the 1990s. *Geophysical Research Letters* **31** L07305.
- HOLSCLAW, T., SANSÓ, B., LEE, H. K. H., HEITMANN, K., HABIB, S., HIGDON, D. and ALAM, U. (2013). Gaussian process modeling of derivative curves. *Technometrics* **55** 57–67. [MR3038485](#)
- HORTON, B. P. and EDWARDS, R. J. (2006). Quantifying Holocene sea-level change using intertidal foraminifera: Lessons from the British Isles. *Cushman Foundation for Foraminiferal Research, Special Publication* **40** 97.
- HORTON, B. P., EDWARDS, J. M. and LLOYD, R. J. (1999). UK intertidal foraminiferal distributions: Implications for sea-level studies. *Marine Micropaleontology* **36** 205–223.
- HOUSTON, J. R. and DEAN, R. G. (2011). Sea-level acceleration based on U.S. tide gauges and extensions of previous global-gauge analyses. *Journal of Coastal Research* **27** 409–417.
- IPCC (2013). Climate change 2013: The physical science basis. Contribution of working group I to the fifth assessment report of the intergovernmental panel on climate change. Cambridge Univ. Press, Cambridge.
- JEVREJEVA, S., GRINSTED, A., MOORE, J. C. and HOLGATE, S. (2006). Nonlinear trends and multiyear cycles in sea level records. *Journal of Geophysical Research: Oceans* **111** C09012.
- JEVREJEVA, S., MOORE, J. C., GRINSTED, A. and WOODWORTH, P. L. (2008). Recent global sea level acceleration started over 200 years ago? *Geophysical Research Letters* **35**.
- JEVREJEVA, S., MOORE, J. C., GRINSTED, A., MATTHEWS, A. and SPADA, G. (2014). Trends and acceleration in global and regional sea levels since 1807. *Global and Planetary Change* **113** 11–22.
- JUGGINS, S. and BIRKS, H. J. B. (2012). Quantitative environmental reconstructions from biological data. In *Tracking Environmental Change Using Lake Sediments* 5 431–494. Springer, Berlin.
- KEMP, A. C., HORTON, B. P., CULVER, S. J., CORBETT, D. R., VAN DE PLASSCHE, O., GEHRELS, W. R., DOUGLAS, B. C. and PARNELL, A. C. (2009). Timing and magnitude of recent accelerated sea-level rise (North Carolina, United States). *Geology* **37** 1035–1038.
- KEMP, A. C., HORTON, B. P., DONNELLY, J. P., MANN, M. E., VERMEER, M. and RAHMSTORF, S. (2011). Climate related sea-level variations over the past two millennia. *Proc. Natl. Acad. Sci. USA* **108** 11017–11022.

- KEMP, A. C., HORTON, B. P., VANE, C. H., CORBETT, D. R., BERNHARDT, C. E., ENGELHART, S. E., ANISFELD, S. C., PARNELL, A. C. and CAHILL, N. (2013). Sea-level change during the last 2500 years in New Jersey, USA. *Quaternary Science Reviews* **81** 90–104.
- KOPP, R. E. (2013). Does the mid-atlantic united states sea level acceleration hot spot reflect ocean dynamic variability? *Geophysical Research Letters* **40** 3981–3985.
- LIANG, H. and WU, H. (2008). Parameter estimation for differential equation models using a framework of measurement error in regression models. *J. Amer. Statist. Assoc.* **103** 1570–1583. [MR2504205](#)
- LINDGREN, F., RUE, H. and LINDSTRÖM, J. (2011). An explicit link between Gaussian fields and Gaussian Markov random fields: The stochastic partial differential equation approach. *J. R. Stat. Soc. Ser. B. Stat. Methodol.* **73** 423–498. [MR2853727](#)
- LONG, A. J., BARLOW, N. L. M., GEHRELS, W. R., SAHER, M. H., WOODWORTH, P. L., SCAIFE, R. G., BRAIN, M. J. and CAHILL, N. (2014). Contrasting records of sea-level change in the eastern and western North Atlantic during the last 300 years. *Earth and Planetary Science Letters* **388** 110–122.
- MANN, M. E., ZHANG, Z., HUGHES, M. K., BRADLEY, R. S., MILLER, S. K., RUTHERFORD, S. and NI, F. (2008). Proxy-based reconstructions of hemispheric and global surface temperature variations over the past two millennia. *Proc. Natl. Acad. Sci. USA* **105** 13252–13257.
- MARDIA, K. V., KENT, J. T., GOODALL, C. R. and LITTLE, J. A. (1996). Kriging and splines with derivative information. *Biometrika* **83** 207–221. [MR1399165](#)
- MORRIS, J. T., SUNDARESHWAR, P. V., NIETCH, C. T., KJERFVE, B. and CAHOON, D. R. (2002). Response of coastal wetlands to rising sea level. *Ecology* **83** 2869–2877.
- NEREM, R. S., CHAMBERS, D., CHOE, C. and MITCHUM, G. T. (2010). Estimating mean sea level change from the TOPEX and Jason altimeter missions. *Marine Geodesy* **33** 435–446.
- NICHOLLS, R. J. and CAZENAVE, A. (2010). Sea-level rise and its impact on coastal zones. *Science* **328** 1517–1520.
- O’HAGAN, A. (1992). Some Bayesian numerical analysis. In *Bayesian Statistics*, 4 (Peñíscola, 1991) 345–363. Oxford Univ. Press, New York. [MR1380285](#)
- PARNELL, A. C., BUCK, C. E. and DOAN, T. K. (2011). A review of statistical chronology models for high-resolution, proxy-based Holocene palaeoenvironmental reconstruction. *Quaternary Science Reviews* **30** 2948–2960.
- PARNELL, A. C., HASLETT, J., ALLEN, J. R. M., BUCK, C. E. and HUNTLEY, B. (2008). A flexible approach to assessing synchronicity of past events using Bayesian reconstructions of sedimentation history. *Quaternary Science Reviews* **27** 1872–1885.
- PELTIER, W. R. (2004). Global glacial isostasy and the surface of the ice-age Earth: The ICE-5G (VM2) model and GRACE. *Annual Review of Earth and Planetary Sciences* **32** 111–149.
- PELTIER, W. R. and TUSHINGHAM, A. M. (1991). Influence of glacial isostatic adjustment on tide gauge measurements of secular sea level change. *Journal of Geophysical Research: Solid Earth* **96** 6779–6796.
- PLUMMER, M. (2003). JAGS: A program for analysis of Bayesian graphical models using Gibbs sampling. In *Proceedings of the 3rd International Workshop on Distributed Statistical Computing, TU Wien*.
- PLUMMER, M. (2014). rjags: Bayesian graphical models using MCMC. R package version 3-14.
- PLUMMER, M., BEST, N., COWLES, K. and VINES, K. (2006). CODA: Convergence Diagnosis and Output Analysis for MCMC. *R News* **6** 7–11.
- RAHMSTORF, S. (2007). A semi empirical approach to projecting future sea-level rise. *Science* **315** 368–370.
- RASMUSSEN, C. E. and WILLIAMS, C. K. I. (2006). *Gaussian Processes for Machine Learning*. MIT Press, Cambridge, MA. [MR2514435](#)
- SALLENGER, A. H., DORAN, K. S. and HOW’D, P. A. (2012). Hotspot of accelerated sea-level rise on the Atlantic coast of North America. *Nature Clim. Change* **2** 884–888.

- SCOTT, D. B. and MEDIOLI, F. S. (1978). Vertical zonations of marsh foraminifera as accurate indicators of former sea levels. *Nature* **272** 528–531.
- SHENNAN, I. and HORTON, B. P. (2002). Holocene land- and sea-level changes in Great Britain. *Journal of Quaternary Science* **17** 511–526.
- STEIN, M. L. (1999). *Interpolation of Spatial Data: Some Theory for Kriging*. Springer, New York. MR1697409
- WHITE, N. J., CHURCH, J. A. and GREGORY, J. M. (2005). Coastal and global averaged sea level rise for 1950 to 2000. *Geophysical Research Letters* **32** L01601.
- WILLIAMS, C. K. I. and RASMUSSEN, C. E. (1996). *Gaussian Processes for Regression*. MIT Press, Cambridge.
- WOODWORTH, P. L. and PLAYER, R. (2003). The permanent service for mean sea level: An update to the 21st century. *Journal of Coastal Research* **19** 287–295.
- WOODWORTH, P. L., WHITE, N. J., JEVREJEVA, S., HOLGATE, S. J., CHURCH, J. A. and GEHRELS, W. R. (2009). Evidence for the accelerations of sea level on multi-decade and century timescales. *International Journal of Climatology* **29** 777–789.
- YAGLOM, I. M. (2011). *Geometric Transformations. I*. Mathematical Association of America, Washington, DC. MR2538066

N. CAHILL
A. C. PARNELL
SCHOOL OF MATHEMATICAL SCIENCES
COMPLEX AND ADAPTIVE SYSTEMS LABORATORY
EARTH INSTITUTE
UNIVERSITY COLLEGE DUBLIN
BELFIELD
DUBLIN 4
IRELAND
E-MAIL: niamh.cahill.2@ucdconnect.ie
andrew.parnell@ucd.ie

A. C. KEMP
DEPARTMENT OF EARTH AND OCEAN SCIENCES
TUFTS UNIVERSITY
2 NORTH HILL ROAD
MEDFORD, MASSACHUSETTS 02155
USA
E-MAIL: andrew.kemp@tufts.edu

B. P. HORTON
DEPARTMENT OF MARINE AND COASTAL SCIENCES
AND INSTITUTE OF EARTH, OCEAN
AND ATMOSPHERIC SCIENCES
RUTGERS UNIVERSITY
71 DUDLEY ROAD
NEW BRUNSWICK, NEW JERSEY 08901
USA
AND
THE EARTH OBSERVATORY OF SINGAPORE
AND ASIAN SCHOOL OF THE ENVIRONMENT
NANYANG TECHNOLOGICAL UNIVERSITY
50 NANYANG AVE
SINGAPORE 639798
E-MAIL: bphorton@marine.rutgers.edu