



Title	Morphological change in cranial shape following the transition to agriculture across western Eurasia
Authors(s)	Cheronet, Olivia, Finarelli, John A., Pinhasi, Ron
Publication date	2016-09-13
Publication information	Cheronet, Olivia, John A. Finarelli, and Ron Pinhasi. "Morphological Change in Cranial Shape Following the Transition to Agriculture across Western Eurasia." Nature Publishing Group, September 13, 2016. https://doi.org/10.1038/srep33316 .
Publisher	Nature Publishing Group
Item record/more information	http://hdl.handle.net/10197/8468
Publisher's version (DOI)	10.1038/srep33316

Downloaded 2026-05-02 01:15:31

The UCD community has made this article openly available. Please share how this access benefits you. Your story matters! (@ucd_oa)



© Some rights reserved. For more information

SCIENTIFIC REPORTS



OPEN

Morphological change in cranial shape following the transition to agriculture across western Eurasia

Olivia Cheronet^{1,2}, John A. Finarelli^{2,3} & Ron Pinhasi^{1,2}

Received: 23 February 2016

Accepted: 23 August 2016

Published: 13 September 2016

The Neolithic transition brought about fundamental social, dietary and behavioural changes in human populations, which, in turn, impacted skeletal morphology. Crania are shaped through diverse genetic, ontogenetic and environmental factors, reflecting various elements of an individual's life. To determine the transition's effect on cranial morphology, we investigated its potential impact on the face and vault, two elements potentially responding to different influences. Three datasets from geographically distant regions (Ukraine, Iberia, and the Levant plus Anatolia) were analysed. Craniometric measurements were used to compare the morphology of pre-transition populations with that of agricultural populations. The Neolithic transition corresponds to a statistically significant increase only in cranial breadth of the Ukrainian vaults, while facial morphology shows no consistent transformations, despite expected changes related to the modification of masticatory behaviour. The broadening of Ukrainian vaults may be attributable to dietary and/or social changes. However, the lack of change observed in the other geographical regions and the lack of consistent change in facial morphology are surprising. Although the transition from foraging to farming is a process that took place repeatedly across the globe, different characteristics of transitions seem responsible for idiosyncratic responses in cranial morphology.

The Neolithic transition marked the shift in human populations from a subsistence spectrum based solely on hunting, fishing and the gathering of natural resources, to strategies involving some dependence on domesticated plants and animals. This marked a major turning point in human prehistory. Resources in a hunting/gathering regime fluctuate temporally and spatially in their abundance, availability and reliability, and although domesticated resources also fluctuate in their availability, their exploitation provided a means for human groups to gradually develop a range of predictable subsistence resources. This process has, in turn, resulted in modifications of many aspects of the human lifestyle, including altered demographic patterns and mating structures¹, as well as sedentism and modifications in health profiles².

As with all organisms, humans adapt to their environmental conditions, and patterns of associated morphological variation have been identified in the Neolithic transition. This comprises a general, organism-wide trend toward gracilisation, including reduction in stature³, long bone composition⁴, and cranial morphology. This last aspect has occasionally been linked to changes in diet, from a tougher hunter-gatherer diet, to a softer farmer diet, with corresponding gracilisation of the masticatory apparatus, notably the mandible and maxilla, as well as areas of muscle attachment^{5–8}.

Changes in masticatory regimes, however, cannot completely account for observed cranial variation among Holocene human populations. Carlson and van Gerven⁹ measured the cranial and mandibular morphology of Nubians across the transition from hunter-gatherer populations to agriculturalists. In addition to changes associated directly with mastication, they also found a decrease in cranial length and increase in cranial height. Similar patterns have been observed to varying degrees in numerous studies using both standard craniometric measurements^{5,10,11} and geometric morphometrics^{6,7}. While more research is required in order to assess whether the onset of these morphological changes are directly triggered by a transition to an agricultural life, it is clear that these patterns are lacking in pre-agricultural societies.

¹School of Archaeology, University College Dublin, Belfield, Dublin 4, Ireland. ²Earth Institute, University College Dublin, Belfield, Dublin 4, Ireland. ³School of Biology and Environmental Sciences, University College Dublin, Belfield, Dublin 4, Ireland. Correspondence and requests for materials should be addressed to O.C. (email: olivia.cheronet@ucdconnect.ie)

Although the complex developmental and functional processes that shape observed morphological variation in the human cranium are not fully understood, an increasing number of elements are being clarified. It is now widely accepted that overall cranial variation follows the expectations of a neutral evolutionary process^{12–15}, and as such, quantified cranial morphology can be employed in a similar manner to genetic data to elucidate questions of population structure^{16–18}. Yet specific elements of the skull indicate that non-neutral processes are at play, and adaptive changes can be observed as significant determinants of morphology in the masticatory and facial regions, in response to climate^{19–21} and subsistence^{7,8,22}. Neutral genetic elements appears to dictate a higher proportion of the temporal bone and vault morphology^{23,24}. As such, investigating detailed morphological variation can allow a deeper understanding of the mechanisms involved, and it is expected that modules within a single cranium may reflect different processes.

Although changes in many elements of lifestyle are associated with the transition to an agriculture-based subsistence, heterogeneity remains present. In a western Eurasian context only, this diversity in the mode of transition is readily observed. Indeed, in some regions, this transition is abrupt with sedentary farmers migrating in from other regions and replacing local hunter-gatherer populations, for example the Linearbandkeramik (LBK) westbound spread²⁵. In other instances, the transition was a prolonged process, with local hunter-gatherers adopting selected elements of the agricultural lifestyle gradually, for example, the Pontic region²⁶. Here, we investigate cranial morphological changes directly linked to the transition to an agricultural lifestyle in Eurasia. Three regions are specifically considered here: The Levant/Anatolia, Iberia, and the Ukraine. In each, the transition took place in a very different way.

The Levant is the first and primary western Eurasian region in which agricultural communities emerged. In this region, the development of the Neolithic subsistence pattern and lifestyle took place gradually. The first step of this process can be seen in the Natufian culture beginning ~15,000 cal BP. Despite subsisting on wild resources, they engaged in intensive cultivation and processing of wild plants, and were sedentary²⁷. This was followed by the Pre Pottery Neolithic cultures (~11,700 to 8,400 cal BP), which show the first evidence of crop domestication (cereals, legumes), followed by the domestication of goat, sheep, cattle and pigs. The reliance on domesticated resources was, however, a gradual process, with a continuation of some reliance on the gathering and cultivation of wild plants, and the hunting of large and small game²⁸. It is only in the subsequent Pottery Neolithic cultures that the full agricultural package (domesticated crops, livestock, pottery) can be found²⁹. Direct evidence of dietary change following the transition in this region has only been obtained through the study of dental microwear, although no consistent pre/post-transition patterns have been detected^{30,31}.

In Iberia, the transition from foraging to farming lifestyles is viewed as a complex maritime colonisation process in which Cardial culture farmers establish enclave settlements along various coastal regions³². This model, which remains the dominant one, views the transition in Iberia as a cultural replacement by the colonisation of exogenous farmers bringing with them domesticates (plant and animal), pottery technology, and other elements of the Neolithic package by ~7,500 cal BP³². Furthermore, a number of stable isotope studies suggest that a marked reduction in the consumption of marine products associated with the transition to an agricultural lifestyle^{33–37}, although a significant level of variability in carbon and nitrogen isotopic ranges was noted^{38,39}.

Finally, in the Ukraine, the Mesolithic-Neolithic transition had its roots in the Mesolithic of this area (as indicated by lithic technology and burial rites²⁶). Beginning around 7,000 cal BP with the early Dnieper-Donets culture, these populations had a subsistence spectrum that mainly relied on wild resources and were not fully sedentary. Their categorisation as ‘Neolithic’ was mainly based on evidence of the use of pottery, a technology that was most likely obtained through contact with neighbouring fully agricultural cultures, namely the Cucuteni-Triploie²⁶. Over the next millennia, by the mid 5th millennium BP, the management of the horse taken together with evidence of cattle and goat domestication, indicates a shift in subsistence to pastoral-farming economy^{26,40}. Despite these fundamental cultural changes, it is interesting to note that isotopic evidence suggests very little consistent change dietary composition^{41,42}, with evidence for the consumption of both freshwater and terrestrial resources through prehistory.

This study specifically aims to identify whether the Neolithic transition contains a universal morphological signal, which is reflected in transitions that occurred independently of one another, in regions that are geographically remote with different cultural contexts and with no apparent consistent contrast in pre and post-transitional diets. We test changes in a number of cranial dimensions of populations prior and subsequent to the transition event in three independent geographic regions. While we cannot be certain that there was no cultural contact, and therefore no potential gene flow, between these Eurasian regions, the large distances between the regions and lack of archaeological evidence to support such contacts makes this scenario implausible. We partitioned the skull into facial and vault modules, attempting to isolate the exact nature of the potentially observed change through principal component analyses. From this we demonstrated that, although no consistent structure in facial variability was observed in the PCAs, vault variability is similar in all regions. Furthermore, only one region (Ukraine) exhibited variation directly linked to the change in lifestyle.

Results

Description of the morphospace produced by a PCA of pre-transition specimens.

Vaults. Table 1 summarises the vault variable loadings for the first two principal components of PCAs of the pre-transitional individuals from each location. The first principal component of the three regions reflects a consistency in patterns of morphological variability. Accounting for 54%, 41% and 41% of the Ukrainian, Iberian and Levant morphological variances, respectively, in all cases, both length measurements considered (M1 and M5) load heavily on this component. Furthermore, all breadth variables display an inverse proportionality with the length variables. In both Ukrainian and Iberian vaults the breadth element is mostly represented by variables M8 and M11 (maximum cranial breadth and biauricular breadth, respectively). In the Levant, although loadings for breadth variables are much lower than those of length variables, all vary within the same range (around 0.2),

Variable	PC1			PC2		
	Ukraine	Iberia	Levant	Ukraine	Iberia	Levant
M1	-0.4821	-0.5801	0.8527	0.3296	0.7372	0.2560
M5	-0.5808	-0.3857	0.3113	0.0509	-0.4325	-0.4029
M8	0.3956	0.4616	-0.1905	-0.0975	0.1598	-0.3267
M9	0.2446	0.0375	-0.2449	0.5811	0.0547	0.5791
M11	0.3822	0.4581	-0.2314	-0.1985	0.0969	0.3451
M12	0.0943	0.1516	-0.0915	-0.0998	0.1381	-0.0623
M17	-0.2426	-0.2596	-0.1338	-0.7016	-0.4609	-0.4551
% variance	54.54	41.42	40.63	17.25	21.10	21.73

Table 1. Loadings on the first two principal components of the PCAs of the pre-transition vaults.

Highlighted are the loadings above an absolute value of 0.35. Note that for the Levant dataset variable M11b was used in place of variable M11.

Variable	PC1			PC2		
	Ukraine	Iberia	Levant	Ukraine	Iberia	Levant
M40	0.2405	-0.2056	-0.0132	0.9172	0.4584	-0.0079
M45	0.8906	-0.9054	-0.0357	-0.3300	-0.3483	-0.0050
M48	-0.2481	0.1207	0.0745	-0.1092	-0.6341	0.0026
M51	0.0836	-0.1905	-0.3697	-0.0192	0.2828	-0.1411
M52	-0.1588	0.1016	0.2597	-0.1622	0.0874	-0.7249
M54	0.0445	0.0698	-0.5066	0.0660	0.1246	0.4523
M55	-0.2308	0.2681	0.7295	-0.0826	-0.4041	0.5000
% variance	49.22	49.06	56.69	35.64	25.69	24.50

Table 2. Loadings on the first two principal components of the PCAs of the pre-transition faces.

Highlighted are the loadings above an absolute value of 0.35.

with the exception of M12 (biasterionic breadth). All in all, this suggests that, as PC1 values increase, vaults become shorter and broader in the first two regions, and vice versa in the last. PC2 accounts for 17%, 21% and 22% of the variance in the Ukraine, Iberia and the Levant, respectively, and for each of the regions, variable M17 (basi-bregmatic height) is a significant contributors to the axis, suggesting a decrease in cranial height with increasing values along the axis. Furthermore, this is complemented by variable M9 (least frontal breadth) for the Ukraine and Levant to a lesser extent, reflecting a reduction in this dimension. In Iberia, PC2 is significantly defined by M1 (maximum cranial length). However, M5 (base length), although also significant, affects the axis in the opposite direction, suggesting a proportional elongation of the superior part of the vault.

Faces. In contrast to the vault PCAs, the facial data result in much more heterogeneous morphospaces (table 2). The first two components produced by the Ukrainian dataset account for 49% and 36% of the total variance respectively. PC1 is primarily defined by bizygomatic breadth (M45), with all other variables displaying much smaller loadings on this axis. PC2 is principally defined by variation in variable M40 (basion-prosthion length). The same analysis of the Iberian data results in the first two axes accounting for 49% and 26% of the variance, respectively. The former is principally driven by bizygomatic breadth (M45), as in the Ukrainian case, with PC2 indicating a reduction in upper facial height (M48) and nasal height (M55), and an increase in basion-prosthion length. Finally, the Levant dataset is represented by a first principal component (57% of variance) predominantly suggesting a reduction in breadth and increase in height of both orbital and nasal cavities (illustrated by the loadings of variables M51, M52, M54 and M55) and PC2 (25% of variance) by the proportional sizes of these two facial elements. Of the three facial morphospaces described, those obtained for the Ukraine and Iberia share some characteristics, although Levant faces define different variations.

Distribution of groups within morphospace. Comparing the distributions of pre and post-transition groups on the morphospaces (Figs 1–3), it is clear that, for the most part, very little morphological differentiation exists between pre- and post-transition groups, with the exception of the Ukrainian vaults. For the Iberian and Levant samples, the overlap in distributions is most pronounced in PC1. In the case of the Ukrainian vaults (Fig. 1) however, strong evidence points towards a shift of distribution towards higher PC1 values upon the transition. This pattern appears to exist in both males and females (Supplementary Figures S7 and S8), and can clearly be seen in the distributions of resampled data. Whereas Ukrainian vaults show no overlap in any of the measures shown (2.5th and 97.5th percentiles, and median), all other datasets have overlapping distributions.

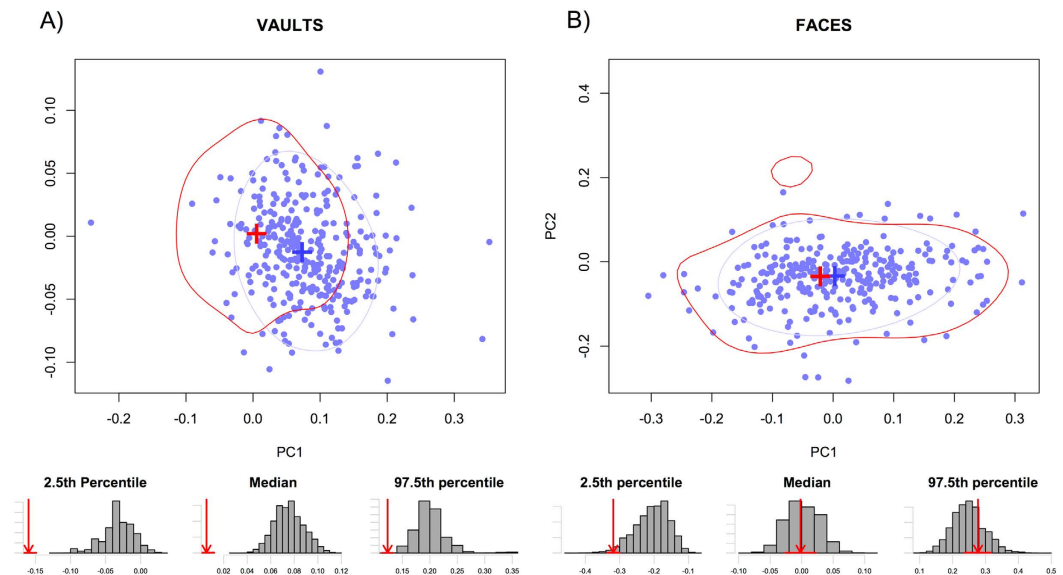


Figure 1. Bivariate plots of the first two principal components projection of the Ukrainian post-transition group on a PCA of the Ukrainian pre-transition group (A) Vaults, (B) Faces. Blue: distribution of the post-transition. Red: distribution of the pre-transition group. For both groups, the crosses represent the mean shape and contours the distribution of 75% of the data. The histograms below illustrate the differences in pre and post transition groups distributions. For the 2.5th percentile, the mean and the 97.5th percentile, the bars represent the distribution of the larger post-transition resampled to the size of the pre-transition group, and the red arrow the value of the pre-transition group (for which the error associated with the data estimation process is expressed by the red horizontal line).

Discussion

There is little consistence in patterns of cranial morphological change linked to the transition to an agricultural lifestyle in the three western Eurasian populations examined, in either the morphology of the face or vault. Furthermore, we observe a complete lack of patterning in faces, as even the morphospaces described by the three regions were different. Conversely, we detect a significant shift between pre and post-agriculturalists in Ukrainian vaults.

Lack of consistency in facial morphological variation corroborates several previous studies^{9,11,22,43}. Although some studies have detected differences between the mandibles of hunter-gatherers and agriculturalists in both modern⁷ and archaeological contexts⁴⁴, the effect of this transition on facial morphology is less clear. During the masticatory process, musculature linking the mandible to the lateral parts of the face (e.g., the zygomatic region) is activated, and strains resulting from this process are felt throughout the facial skeleton^{45,46}. Nevertheless, while a number of studies have found significant differences in facial robusticity potentially associated with masticatory functions⁴³ between hunter-gatherers and agriculturalists in Nubia⁹, the Levant⁴⁷, and Europe and North Africa²², others have failed to recognise such patterns at both regional¹¹ and global scales⁴³ in overall facial morphology. Consequently, it is clear that the response to this type of subsistence change is a process highly localised within the cranial structure, influenced by a multitude of environmental and genetic variables, as illustrated by the findings of González-José *et al.*¹¹ of a differentiation of the masticatory region only.

Our results do suggest a relative brachycephalisation, or broadening of the middle part of the vault, in Ukrainian populations coincident with the transition to an agricultural lifestyle. Brachycephalisation has been a recurrent observation in the physical anthropology literature, both as a continuous process throughout human evolution^{48,49} and as an abrupt shift at the Neolithic transition^{10,50}. Conceptualised at the beginning of 20th century, in a context typifying crania through indices based on a few linear dimensions, brachycephalisation, in the strict sense, is the change in proportion of maximum cranial breadth and maximum cranial length. However when considered in the context of the entire cranium, its definition may be expanded to describe a general broadening of the cranial vault, as observed in the Ukrainian data through a strong positive loadings of maximum cranial breadth (M8) and biauricular breadth (M11), and negative loadings of base length (M5), suggesting broadening of both the superior (traditionally-defined brachycephalisation) and inferior parts of the vault. It should be noted that this is effectively the opposite response that was noted in Nubian populations, where crania were observed to become proportionally longer and taller across the Neolithic transition⁹.

A number of hypotheses have been proposed to explain brachycephalisation. Diet has often been implicated in cranial shape determination for two distinct reasons. First, harder foods require stronger mastication, which in turn applies greater stress on the cranial skeleton leading to a more pronounced development of regions directly or indirectly associated with mastication. This may also have repercussions throughout the cranial structure as has been demonstrated in a number of organisms^{51–53}. In human-specific studies, diet-associated brachycephalisation has been observed in a hunter-gatherer versus agriculturalist context^{6,9}, and has traditionally been interpreted

mechanically. However, diet has also been suggested to influence cranial morphology (as well as other anatomical characteristics) through the response of skeletal development to modified nutrient intake^{8,54–58}. Menéndez *et al.*⁵⁷ suggested that nutrient composition in the diet had a stronger impact on cranial diversification than did mechanical toughness. In contrast, recent work by Noback⁸ found diet to be of great importance to cranial morphology as a whole. However, this is not a simple dichotomy of farmer versus hunter-gatherer, as considered here and in many similar studies, but rather, it is a function of relative inputs of animal and plant foods ingested, suggesting that a number of intricate processes may be at work in parallel⁸. As such, the shift from a hunter-gatherer to an agricultural diet is likely to alter both the mechanical and physiological properties of diet.

Considering a very different set of processes, Billy^{59,60} and Schwidetzky⁶¹ found that higher levels of endogamy coincided with brachycephalisation and general skeletal gracilisation. Although these results have been criticised⁶², the transition to an agricultural lifestyle is likely to have resulted in more endogamous populations, as recently demonstrated through genetic studies⁶³. However, whether changes in cranial morphology are a direct consequence, or the result of responses to a range of other environmental changes associated with changes in mating patterns, remains debated. Regardless, as the transition to an agricultural lifestyle has resulted in deep demographic changes⁶⁴, if these were reflected in cranial morphology, that may be one of the factors driving the observed change in the Ukrainian vaults.

Despite all these potential factors that may have led to brachycephalisation in the Ukraine, the data for the Levant and Iberia show no signs of this process, although previous studies have suggested a potential brachycephalisation across the Neolithic transition for these two regions^{10,47}. Unlike these two earlier studies, the methods employed here explicitly incorporate errors associated with sample size and missing data, possibly indicating that previous results may reflect sampling or preservation biases.

Nevertheless, the lack of change in cranial morphology observed here may be the result of a continuity of environmental conditions, leading to a relative constancy in behaviours, for example a lack of change in masticatory regime resulting from a diet whose consistency remained broadly similar across the transition, as has been reported for the Levant based on microwear patterns^{30,31}. Alternatively, as the cranial vault has been demonstrated to reflect large-scale neutral genetic drift^{23,65,66}, similar morphologies observed before and after the transition in the Levant and Iberia may reflect long-term genetic continuity in these regions. Although there is archaeological evidence for this being the case in the Levant⁶⁷, the Neolithic transition in Iberia is unlikely to have taken place without the influx of any foreign populations, as molecular studies suggest a genetic discontinuity between Mesolithic and Neolithic populations in Iberia^{68,69}. In addition, an influx of foreign populations coinciding with the Ukrainian groups considered as agricultural is not to be excluded as a potential causation of morphological change. Indeed, there is a mounting body of genetic evidence suggesting a mixed European Mesolithic and Caucasus origin for the Yamnaya culture^{70,71}. Altogether, it is likely that the onset of agriculture in each of the three regions can be characterised by a unique set of features, with similarly idiosyncratic morphological responses in the cranium.

Error bars on the estimates cover a large proportion of the total observed range of morphological variation all plots (supplementary Figs S1–6) due to comparisons across datasets with widely varying sampling intensities (as is inevitably the case when comparing pre and post-agricultural transition groups). Consequently, the analysis of temporally and/or geographically more dense datasets may be able to reveal subtler patterns that are undetectable in the present data set. It is possible that the suggestion by Roseman⁷² is applicable here: that, although there should be informative cranial variability present, it is generally drowned out by large degrees of background noise.

Conclusion

The transition from a hunter-gatherer to an agricultural lifestyle has resulted in the modification of many aspects of the human life. Most obviously, this includes changes in sources of primary subsistence products, but it can also encompass important changes in demography, population genetics, and physical environment, all of which can have profound impacts on skeletal morphology. However, the results for three western Eurasian regions presented here suggest a lack of consistent morphological change across the Neolithic transition in either the face or cranial vault. The variable characteristics of the three transition events considered suggest that morphological variability potentially associated solely with the fundamental cultural features associated with subsistence is obscured by that caused by other factors impacting cranial shape. Conditions specific to the Ukrainian transition enabled the detection of a general brachycephalisation, and may have dietary, demographic or genetic causes. The previous detection of similar patterns in other regions^{10,47,50} suggests that this may indeed be a universal change, but one which can remain undetected in many situations as a result of the multiple determinants of cranial morphology.

Materials and Methods

The data were derived from the database previously used by Pinhasi and von Cramon-Taubadel^{18,73}, augmented for pre-transition groups with data from Brewster *et al.*⁷⁴. Three independent regions were selected, such that they were geographically distant from each other, and therefore likely to be free of significant amounts of shared gene-flow. These comprise 1) the Levant and Anatolia (“Levant”), where agriculture developed *in situ*⁶⁷; 2) Iberia, which is the most south-western region in the trajectory of the spread of agriculture into Europe and in which agricultural communities first appear ca. 6,000 cal. BC³²; and 3) the Ukraine, a region in which pottery appears as part of a hunter-gatherer subsistence spectrum and the first communities who adopt management of domesticated plants and animals appear ca. 4,500 cal. BC⁷⁵, but in which full food-producing farming economies appear a millennium later²⁶. The number of individuals analysed for each region is detailed in Table 3.

A set of 14 standard craniometric measurements was chosen to assess overall variations in cranial vault and face morphology, each represented by 7 variables (described in detail in Table 4). For both elements, measurements of height, breadth and length were included. Furthermore, the choice of variables chosen was influenced by their availability in the original database, minimising the instances of missing data. This is reflected in the choice

	Face (pre/post)	Vault (pre/post)
Ukraine	432 (34/280)	472 (39/309)
Iberia	102 (22/80)	120 (30/90)
Levant	157 (23/100)	174 (23/117)

Table 3. Number of specimens used in the analyses, including the pre and post-transition proportion for each group in brackets.

Martin Number ⁷⁹	Name	Skull Element	Definition
M1	Maximum cranial length	Vault	Maximum glabello-occipital length
M5	Skull base length	Vault	Basion to nasion
M8	Maximum cranial breadth	Vault	Widest measurement perpendicular to the medio-sagittal plane
M9	Least frontal breadth	Vault	Distance between left and right frontotemporale
M11	Biauricular breadth	Vault	Distance between left and right auriculare
M11b	Biradicular breadth	Vault	Distance between left and right radiculare
M12	Biasterionic breadth	Vault	Distance between left and right asterion
M17	Basi-bregmatic height	Vault	Distance between basion and bregma
M40	Basion-Prosthion length	Face	Basion to prosthion
M45	Bizygomatic breadth	Face	Distance between left and right zygion
M48	Upper facial height	Face	Nasion to prosthion
M51	Orbital breadth	Face	Maxillofrontale to ektokonchion
M52	Orbital height	Face	Greatest height of orbit, perpendicular to M51
M54	Nasal breadth	Face	Maximal nasal breadth
M55	Nasal height	Face	Nasion to Nasospinale

Table 4. Description of variables used.

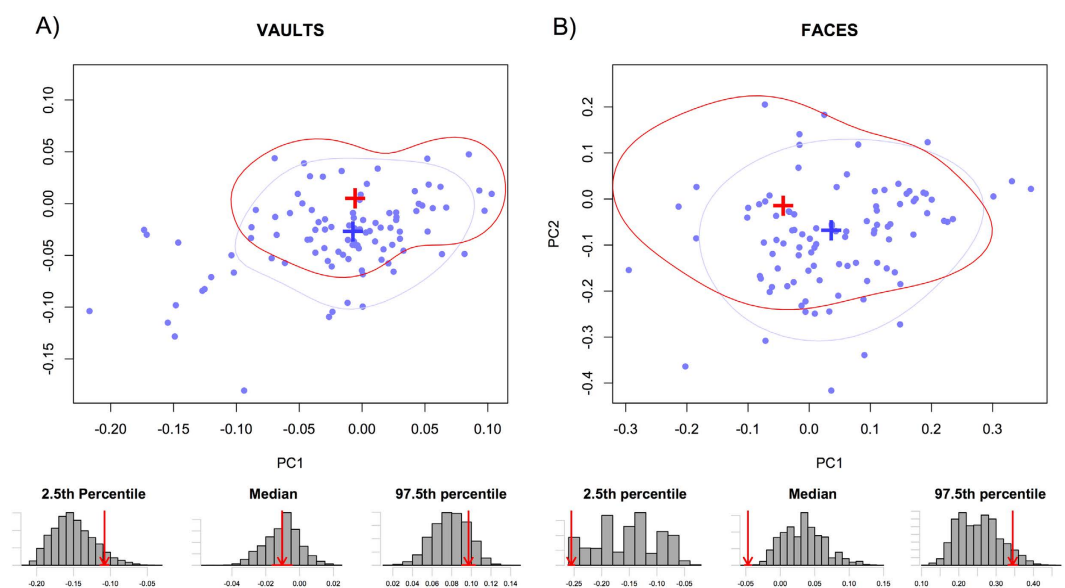


Figure 2. Bivariate plots of the first two principal components projection of the Levant post-transition group on a PCA of the Levant pre-transition group (A) Vaults, (B) Faces. Blue: distribution of the post-transition. Red: distribution of the pre-transition group. For both groups, the crosses represent the mean shape and contours the distribution of 75% of the data. The histograms below illustrate the differences in pre and post transition groups distributions. For the 2.5th percentile, the mean and the 97.5th percentile, the bars represent the distribution of the larger post-transition resampled to the size of the pre-transition group, and the red arrow the value of the pre-transition group (for which the error associated with the data estimation process is expressed by the red horizontal line).

of Basion-Prosthion length (M40) as a measure of facial length. Although it is a measure that also encompasses many elements of basal length, it was the only variable available for a large number of individuals. Furthermore,

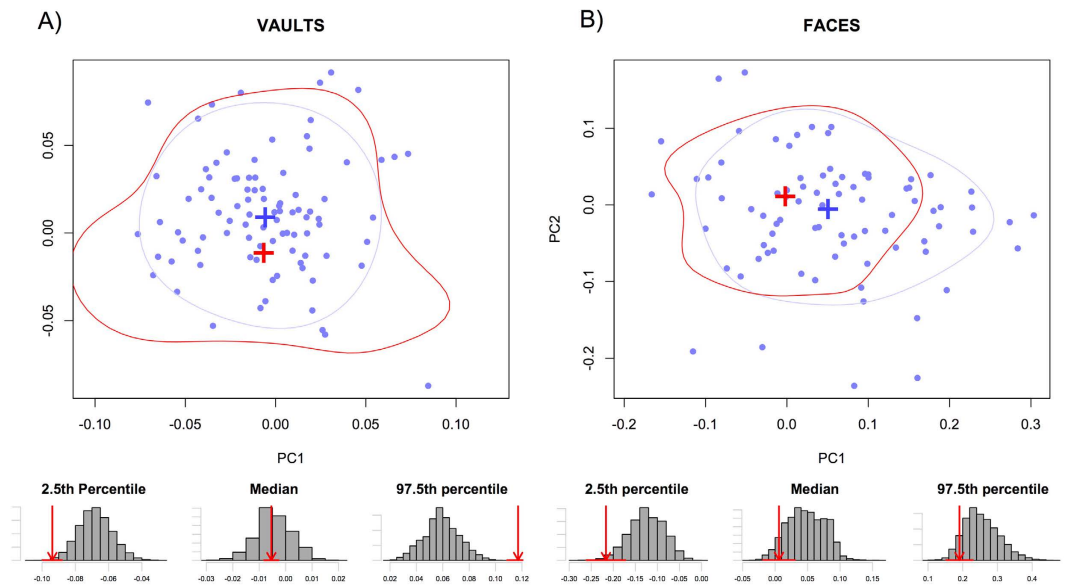


Figure 3. Bivariate plots of the first two principal components projection of the Iberian post-transition group on a PCA of the Iberian pre-transition group (A) Vaults, (B) Faces. Blue: distribution of the post-transition. Red: distribution of the pre-transition group. For both groups, the crosses represent the mean shape and contours the distribution of 75% of the data. The histograms below illustrate the differences in pre and post transition groups distributions. For the 2.5 percentile, the mean and the 97.5 percentile, the bars represent the distribution of the larger post-transition resampled to the size of the pre-transition group, and the red arrow the value of the pre-transition group (for which the error associated with the data estimation process is expressed by the red horizontal line).

variable M11 (biauricular breadth) was replaced with variable M11b for the Levant dataset. This reflects a difference in measurement methodology of inferior vault breadth, but it enables the use of a larger dataset. All variables were size-adjusted though dividing them by the individual-specific geometric mean of the cranial element.

We considered two main archaeological categories: 1) pre-agricultural populations (“pre-transition”), which are represented by cultures that exhibit no evidence of a Neolithic lifestyle (such as the “Epipaleolithic” in the Levant and the “Mesolithic” in Iberia and the Ukraine); and 2) Neolithic agriculturalists (“post-transition”) (Table 3). These include populations that have adopted a Neolithic subsistence spectrum involving extensive reliance on the consumption of domesticated crops and animals. As the transition took place in very different ways in the three regions considered here, determination of pre- and post-transition categories required the consideration of local cultural circumstances. In the case of cultural groups with ambiguous characteristics having only adopted the agricultural lifestyle partially, these were omitted from analyses. In Iberia, the local discrete character of the transition resulted in no transitional group, and as such no individuals were excluded. In the Levant dataset, Pre Pottery Neolithic individuals were excluded, as they had adopted the subsistence element, but not many of the important technological aspects of the transition to agriculture, such as pottery. Finally, the individuals belonging to the Dnieper-Donets culture were excluded from the Ukrainian dataset, as, despite adoption of many material elements of the agricultural lifestyle, their subsistence remained mostly based on wild resources.

As is frequently the case when working with archaeological material, many of the crania were incomplete, requiring selection of the morphological variables to maximise the number of crania preserving these features, and therefore minimise the need for estimating missing data. Each anatomical partition (face and vault) was considered separately in the creation of two datasets for each geographic region. In each case, specimens missing more than 50% of the variables for a specific partition were discarded. The remaining missing data were estimated based on weighted averages of linear regressions. Linear regressions of all possible combinations of variables within the dataset were performed, providing a set of potential formulae for the estimation of missing data points from those elements that were preserved on an individual specimen⁷⁶. Log-likelihoods for each formula were obtained using the standard deviations of the residuals. From the equation sets used to estimate a missing datum based on preserved features, proportional likelihoods were used as weightings in averaging the regression estimates for all applicable formulae for preserved features⁷⁶. The R function for performing missing data estimation has been archived at CRAN (<https://cran.r-project.org/>) as the “WaverR” package.

Statistical analyses were carried out separately for each of the three regions and each partition. Principal component analyses (PCAs) were carried out on the pre-transition groups, creating a base morphospace for each dataset. Subsequently, post-transition groups were projected on their respective pre-transition morphospace using the loadings derived for each anatomical variable for each principle component (PC). Using this projected data, it was possible to identify potential presence of morphological shifts specific to a geographical region for either the facial or vault data partitions. A detailed look at the variable loadings enabled the morphological characterisation of the putative change.

Pairwise group comparisons were carried out for each of the three geographically defined datasets. However, there are large disparities in the pre- and post-transition sample sizes, indicating differential sampling and/or preservation across the Neolithic transition in all three geographic regions, which can bias inferences drawn from such data sets^{77,78}. To account for potential biases due to sample size, we performed two resampling procedures on the data sets. First, the missing data estimation involved weighted regressions that themselves incorporate a certain degree of error. We resampled each estimate 10,000 times randomly assigning error to the estimate based on the standard deviation of the regression residuals. Second, we subsampled the individuals from the larger of the two samples down to the size of the smaller 10,000 times. These procedures allowed for an estimate of the amount of uncertainty around our reconstructions of pre- and post-transition cranial morphologies.

The significance of potential differences in distribution of the pre and post-transition groups was assessed by comparing the 2.5 percentile, median and 97.5 percentile of the two categories for each element in each region. This comparison was carried out by assessing the position of the pre-transitional value on histograms of the resampled post-transitional data.

References

- Bocquet-Appel, J.-P. P. & Bar-Yosef, O. In *The Neolithic Demographic Transition and its Consequences* (eds. Bocquet-Appel, J.-P. P. & Bar-Yosef, O.) 1–10 (Springer Netherlands, 2008).
- Pinhasi, R. & Stock, J. T. *Human Bioarchaeology of the Transition to Agriculture* (John Wiley & Sons, 2011).
- Mummert, A., Esche, E., Robinson, J. & Armelagos, G. J. Stature and robusticity during the agricultural transition: Evidence from the bioarchaeological record. *Econ. Hum. Biol.* **9**, 284–301 (2011).
- Shaw, C. N., Stock, J. T., Davies, T. G. & Ryan, T. M. In *Reconstructing Mobility* (eds. Carlson, K. J. & Marchi, D.) 49–66 (Springer US, 2014).
- Pinhasi, R., Eshed, V. & Shaw, P. Evolutionary changes in the masticatory complex following the transition to farming in the southern Levant. *Am. J. Phys. Anthropol.* **135**, 136–148 (2008).
- Paschetta, C. *et al.* The influence of masticatory loading on craniofacial morphology: A test case across technological transitions in the Ohio valley. *Am. J. Phys. Anthropol.* **141**, 297–314 (2010).
- Cramon-Taubadel, von N. Global human mandibular variation reflects differences in agricultural and hunter-gatherer subsistence strategies. *Proc. Natl. Acad. Sci. USA* **108**, 19546–19551 (2011).
- Noback, M. L. & Harvati, K. The contribution of subsistence to global human cranial variation. *J. Hum. Evol.* **80C**, 34–50 (2015).
- Carlson, D. S. & van Gerven, D. P. Masticatory Function and Post-Pleistocene Evolution in Nubia. *Am. J. Phys. Anthropol.* **46**, 495–506 (1977).
- Lalueza-Fox, C. Physical anthropological aspects of the Mesolithic-Neolithic transition in the Iberian Peninsula. *Curr. Anthropol.* **37**, 689–695 (1996).
- González-José, R. *et al.* Functional-cranial approach to the influence of economic strategy on skull morphology. *Am. J. Phys. Anthropol.* **128**, 757–771 (2005).
- Relethford, J. H. Craniometric variation among modern human populations. *Am. J. Phys. Anthropol.* **95**, 53–62 (1994).
- Roseman, C. C. Detecting interregionally diversifying natural selection on modern human cranial form by using matched molecular and morphometric data. *Proc. Natl. Acad. Sci. USA* **101**, 12824–12829 (2004).
- Smith, H. F. Which cranial regions reflect molecular distances reliably in humans? Evidence from three-dimensional morphology. *Am. J. Hum. Biol.* **21**, 36–47 (2009).
- Cramon-Taubadel, von N. The relative efficacy of functional and developmental cranial modules for reconstructing global human population history. *Am. J. Phys. Anthropol.* **146**, 83–93 (2011).
- Hubbe, M., Okumura, M., Bernardo, D. V. & Neves, W. A. Cranial morphological diversity of early, middle, and late Holocene Brazilian groups: Implications for human dispersion in Brazil. *Am. J. Phys. Anthropol.* **155**, 546–558 (2014).
- de Azevedo, S. *et al.* Evaluating microevolutionary models for the early settlement of the New World: the importance of recurrent gene flow with Asia. *Am. J. Phys. Anthropol.* **146**, 539–552 (2011).
- Cramon-Taubadel, von N. & Pinhasi, R. Craniometric data support a mosaic model of demic and cultural Neolithic diffusion to outlying regions of Europe. *Proc. R. Soc. B* **278**, 2874–2880 (2011).
- Hubbe, M., Hanihara, T. & Harvati, K. Climate Signatures in the Morphological Differentiation of Worldwide Modern Human Populations. *Anat. Rec.* **292**, 1720–1733 (2009).
- Noback, M. L., Harvati, K. & Spoor, F. Climate-related variation of the human nasal cavity. *Am. J. Phys. Anthropol.* **145**, 599–614 (2011).
- Evteev, A., Cardini, A. L., Morozova, I. & O’Higgins, P. Extreme climate, rather than population history, explains mid-facial morphology of northern Asians. *Am. J. Phys. Anthropol.* **153**, 449–462 (2014).
- Sardi, M. L., Ramirez-Rozzi, F. & Pucciarelli, H. M. The Neolithic transition in Europe and North Africa. The functional craneology contribution. *Anthropol. Anz.* **62**, 129–145 (2004).
- Harvati, K. & Weaver, T. D. Human cranial anatomy and the differential preservation of population history and climate signatures. *Anat. Rec.* **288A**, 1225–1233 (2006).
- Cramon-Taubadel, von N. Revisiting the homoiology hypothesis: the impact of phenotypic plasticity on the reconstruction of human population history from craniometric data. *J. Hum. Evol.* **57**, 179–190 (2009).
- Tresselt, A. & Vigne, J.-D. Last hunter-gatherers and first farmers of Europe. *C. R. Acad. Sci.* **334**, 182–189 (2011).
- Zvelebil, M. & Lillie, M. In *Europe’s First Farmers* (ed. Price, T. D.) 57–92 (Cambridge University Press, 2000).
- Bar-Yosef, O. The Natufian culture in the Levant, threshold to the origins of agriculture. *Evol. Anthropol.* **6**, 159–177 (1998).
- Kuijt, I. & Goring-Morris, N. Foraging, Farming, and Social Complexity in the Pre-Pottery Neolithic of the Southern Levant: A Review and Synthesis. *J. World Prehist.* **16**, 361–440 (2002).
- Zeder, M. A. The Origins of Agriculture in the Near East. *Curr. Anthropol.* **52**, S221–S235 (2011).
- Mahoney, P. Dental microwear from Natufian hunter-gatherers and early Neolithic farmers: Comparisons within and between samples. *Am. J. Phys. Anthropol.* **130(3)**, 308–319 (2006).
- Eshed, V., Gopher, A. & Hershkovitz, I. Tooth wear and dental pathology at the advent of agriculture: New evidence from the Levant. *Am. J. Phys. Anthropol.* **130(3)**, 145–159 (2006).
- Zilhão, J. Radiocarbon evidence for maritime pioneer colonization at the origins of farming in west Mediterranean Europe. *Proc. Natl. Acad. Sci. USA* **98**, 14180–14185 (2001).
- García Guixé, E., Richards, M. P. & Subirà, M. E. Palaeodiets of Humans and Fauna at the Spanish Mesolithic Site of El Collado. *Curr. Anthropol.* **47**, 549–557 (2006).
- Fontanals-Coll, M., Subirà, M. E., Bonilla, M. D.-Z., Duboscq, S. & Gibaja, J. F. Investigating palaeodietary and social differences between two differentiated sectors of a Neolithic community, La Bòbila Madurell-Can Gambús (north-east Iberian Peninsula). *c Rep.* **3**, 160–170 (2015).

35. Gibaja, J. F. *et al.* Human diet and the chronology of neolithic societies in the north-east of the Iberian Peninsula: the necropolises of Puig d'en Roca and Can Gelats (Girona, Spain). *Archaeol. Anthropol. Sci.* 1–11 (2016).
36. Lubell, D., Jackes, M., Schwarcz, H. & Knyf, M. The Mesolithic-Neolithic transition in Portugal: Isotopic and dental evidence of diet. *J. Archaeol. Sci.* **21**, 201–216 (1994).
37. Carvalho, A. F. & Petcley, F. Stable Isotope Evidence of Neolithic Palaeodiets in the Coastal Regions of Southern Portugal. *J. Island Coastal Archaeol.* **8**, 361–383 (2013).
38. Fernández-López de Pablo, J. *et al.* Late Mesolithic burials at Casa Corona (Villena, Spain): direct radiocarbon and palaeodietary evidence of the last forager populations in Eastern Iberia. *J. Archaeol. Sci.* **40**, 671–680 (2013).
39. Waterman, A. J., Tykot, R. H. & Silva, A. M. Stable Isotope Analysis of Diet-based Social Differentiation at Late Prehistoric Collective Burials in South-Western Portugal. *Archaeometry* **58**, 131–151 (2016).
40. Anthony, D. W. *The Horse, the Wheel, and Language* (Princeton University Press, 2010).
41. Lillie, M. C. & Richards, M. Stable Isotope Analysis and Dental Evidence of Diet at the Mesolithic-Neolithic Transition in Ukraine. *J. Archaeol. Sci.* **27**, 965–972 (2000).
42. Lillie, M., Budd, C. & Potekhina, I. Stable isotope analysis of prehistoric populations from the cemeteries of the Middle and Lower Dnieper Basin, Ukraine. *J. Archaeol. Sci.* **38**, 57–68 (2011).
43. Lahr, M. M. & Wright, R. V. S. The question of robusticity and the relationship between cranial size and shape in Homo sapiens. *J. Hum. Evol.* **31**, 157–191 (1996).
44. Pinhasi, R., Eshed, V. & Cramon-Taubadel, von, N. Incongruity between Affinity Patterns Based on Mandibular and Lower Dental Dimensions following the Transition to Agriculture in the Near East, Anatolia and Europe. *Plos One* **10**, e0117301 (2015).
45. Lieberman, D. E., Krovitz, G. E., Yates, F. W., Devlin, M. & St Claire, M. Effects of food processing on masticatory strain and craniofacial growth in a retrognathic face. *J. Hum. Evol.* **46**, 655–677 (2004).
46. Toro Ibacache, V., Muñoz, V. Z. & O'Higgins, P. The relationship between skull morphology, masticatory muscle force and cranial skeletal deformation during biting. *Ann. Anat.* **203**, 59–68 (2016).
47. Pinhasi, R. & Pluciennik, M. A Regional Biological Approach to the Spread of Farming in Europe: Anatolia, the Levant, South-Eastern Europe, and the Mediterranean. *Curr. Anthropol.* **45**, S59–S82 (2004).
48. Weidenreich, F. The Brachycephalization of Recent Mankind. *Southwestern J. of Anthropol.* **1**, 1–54 (1945).
49. Henneberg, M. The influence of natural selection on brachycephalization in Poland. *Studies in Phys. Anthropol.* **2**, 3–19 (1976).
50. Menk, R. *Anthropologie du Néolithique européen: analyse multivariée et essai de synthèse* (Faculté des sciences de l'Université de Genève, 1981).
51. Byron, C. D. *et al.* Effects of increased muscle mass on mouse sagittal suture morphology and mechanics. *Anat. Rec.* **279A**, 676–684 (2004).
52. Byron, C. D. Cranial Suture Morphology and its Relationship to Diet in Cebus. *J. Hum. Evol.* **57**, 649–655 (2009).
53. Menegaz, R. A. *et al.* Evidence for the Influence of Diet on Cranial Form and Robusticity. *Anat. Rec.* **293**, 630–641 (2010).
54. Lasker, G. W. Migration and physical differentiation. A comparison of immigrant with American-born Chinese. *Am. J. Phys. Anthropol.* **4**, 273–300 (1946).
55. Henneberg, M. & Steyn, M. Diachronic variation of cranial size and shape in the Holocene: A manifestation of hormonal evolution. *Riv. Antropol.* **73**, 159–164 (1995).
56. Kouchi, M. Brachycephalization in Japan has ceased. *Am. J. Phys. Anthropol.* **112**, 339–347 (2000).
57. Menéndez, L., Bernal, V., Novellino, P. & Perez, S. I. Effect of bite force and diet composition on craniofacial diversification of Southern South American human populations. *Am. J. Phys. Anthropol.* **155**, 114–127 (2014).
58. Sardi, M. L., Novellino, P. S. & Pucciarelli, H. M. Craniofacial morphology in the Argentine center-west: Consequences of the transition to food production. *Am. J. Phys. Anthropol.* **130**, 333–343 (2006).
59. Billy, G. Anthropometric evidence of exogamy related to secular changes in present day populations. *J. Hum. Evol.* **4**, 517–520 (1975).
60. Billy, G. Modifications phénotypiques contemporaines et migrations matrimoniales. *bmsap* **6**, 251–259 (1979).
61. Schwidetzky, I. Endogamie und anthropologische Differenzierung auf den Kanarischen Inseln: Anthropologische Untersuchungen auf den Kanarischen Inseln III. *Z. Morphol. Anthropol.* **65**, 1–13 (1973).
62. Susanne, C. Living-Conditions and Secular Trend. *J. Hum. Evol.* **14**, 357–370 (1985).
63. Alt, K. W. *et al.* Earliest evidence for social endogamy in the 9,000-year-old-population of Basta, Jordan. *Plos One* **8**, e65649 (2013).
64. Bocquet-Appel, J.-P. P. & Bar-Yosef, O. *The Neolithic Demographic Transition and its Consequences* (Springer Netherlands, 2008).
65. Harvati, K. & Weaver, T. D. In *Neanderthals Revisited: New Approaches and Perspectives* (eds. Harvati, K. & Harrison, T.) 239–254 (Springer Netherlands, 2006).
66. Cramon-Taubadel, von N. Congruence of individual cranial bone morphology and neutral molecular affinity patterns in modern humans. *Am. J. Phys. Anthropol.* **140**, 205–215 (2009).
67. Goring-Morris, A. N. & Belfer-Cohen, A. Neolithization Processes in the Levant. *Curr. Anthropol.* **52**, S195–S208 (2011).
68. Sanchez-Quinto, F. *et al.* Genomic Affinities of Two 7,000-Year-Old Iberian Hunter-Gatherers. *Curr. Biol.* **22**, 1494–1499 (2012).
69. Gamba, C. *et al.* Ancient DNA from an Early Neolithic Iberian population supports a pioneer colonization by first farmers. *Mol. Ecol.* **21**, 45–56 (2012).
70. Jones, E. R. *et al.* Upper Palaeolithic genomes reveal deep roots of modern Eurasians. *Nat. Commun.* **6**, 8912 (2015).
71. Allentoft, M. E. *et al.* Population genomics of Bronze Age Eurasia. *Nature* **522**, 167–172 (2015).
72. Roseman, C. C. Random genetic drift, natural selection, and noise in human cranial evolution. *Am. J. Phys. Anthropol.* **160**, 582–592 (2016).
73. Pinhasi, R. & Cramon-Taubadel, von, N. Craniometric Data Supports Demic Diffusion Model for the Spread of Agriculture into Europe. *Plos One* **4**, e6747 (2009).
74. Brewster, C., Meiklejohn, C., Cramon-Taubadel, von, N. & Pinhasi, R. Craniometric analysis of European Upper Palaeolithic and Mesolithic samples supports discontinuity at the Last Glacial Maximum. *Nat. Commun.* **5**, 4094 (2014).
75. Lillie, M. & Budd, C. In *Human Bioarchaeology of the Transition to Agriculture* 43–62 (John Wiley & Sons, Ltd, 2011).
76. Sears, K. E., Finarelli, J. A., Flynn, J. J. & Wyss, A. R. Estimating body mass in New World 'monkeys' (Platyrrhini, Primates), with a consideration of the Miocene platyrrhine, *Chilecebus carrascoensis*. *Am. Mus. Novit.* **3617**, 1–29 (2008).
77. Liow, L. H. & Finarelli, J. A. A dynamic global equilibrium in carnivoran diversification over 20 million years. *Proc. R. Soc. Lond. B* **281**, 20132312 (2014).
78. Finarelli, J. A. & Liow, L. H. Diversification histories for North American and Eurasian carnivorans. *Biol. J. Lin. Soc.* **118**, 26–38 (2016).
79. Martin, R. & Saller, K. *Lehrbuch der Anthropologie in Systematischer Darstellung, mit Besonderer Berücksichtigung der Anthropologischen Methoden* (Fischer, 1957).

Acknowledgements

We thank Wienfrid Heneke for kindly providing access to the craniometric data. This research was supported by R.P.'s European Research Council Starting Grant (ERC- 2010-StG 263441) and Irish Research Council Advanced Research Project Grant (RPG2013-2).

Author Contributions

O.C., J.A.F. and R.P. designed the study. O.C. performed the data analysis. O.C., J.A.F. and R.P. wrote the paper.

Additional Information

Supplementary information accompanies this paper at <http://www.nature.com/srep>

Competing financial interests: The authors declare no competing financial interests.

How to cite this article: Cheronet, O. *et al.* Morphological change in cranial shape following the transition to agriculture across western Eurasia. *Sci. Rep.* **6**, 33316; doi: 10.1038/srep33316 (2016).



This work is licensed under a Creative Commons Attribution 4.0 International License. The images or other third party material in this article are included in the article's Creative Commons license, unless indicated otherwise in the credit line; if the material is not included under the Creative Commons license, users will need to obtain permission from the license holder to reproduce the material. To view a copy of this license, visit <http://creativecommons.org/licenses/by/4.0/>

© The Author(s) 2016