

A TDD/FDD SAW-Less Superheterodyne Receiver with Blocker-Resilient Band-Pass Filter and Multi-Stage HR in 28nm CMOS

Iman Madadi¹, Massoud Tohidian¹, Koen Cornelissens², Patrick Vandenameele², R. Bogdan Staszewski^{1,3}

¹Delft University of Technology, Delft, The Netherlands ²M4S/Hisilicon, Leuven, Belgium ³UCD, Dublin, Ireland

Abstract

A SAW-less discrete-time superheterodyne receiver (RX) with multi-stage harmonic rejection in 28nm CMOS, featuring highly linear LNTA, employs a novel blocker-resilient octal charge-sharing band-pass filter to achieve low power consumption. The RX features NF of 2.1 to 2.6 dB, and IIP3 of 8 to 14 dBm, while drawing only 24 to 37 mW in different operating modes.

Introduction

Conventional multi-band, multi-standard receivers (RXs) require many duplexers, SAW filters and switches, typically one per band. To reduce cost and size, the trend is to eliminate SAW filters and switches by using a highly linear wideband RX [1]-[4]. As a consequence, the isolation of transmitter (TX)-to-RX, and the suppression of TX interferers are worsening, which all further increase RX linearity requirements in FDD modes. The reduced out-of-band (OB) filtering implies very tough IIP2 requirement for zero-IF (ZIF) receivers, thus requiring highly sophisticated calibration algorithms to be frequently run due to PVT and channel variations. There are many other issues associated with ZIF, such as time-variant dc offsets, sensitivity to flicker noise, and large in-band LO leakage. On the other hand, superheterodyne architectures [5], [6] do not experience the aforementioned problems thanks to their high IF. Note that a high-IF RX can have a theoretically infinite IIP2 because a modulated blocker at the input will be down-converted to around dc, thus completely filtered out.

The full-rate high-IF RX in [6] operates in discrete-time (DT) using a quadrature charge-sharing (CS) band-pass filter (BPF) to realize a highly reconfigurable RX solution of small die area and high power efficiency. As in any wideband RX, the linearity and tolerance to out-of-band blockers mainly depends on its first filter's selectivity. Unfortunately, the quadrature CS-BPF has insufficient blocker rejection to support the SAW-less operation. In this work, we propose a novel CS-BPF that utilizes an octal-phase (i.e., eight 45°-separated) signaling and an extra pole to improve filtering and harmonic rejection (HR). Combined with a highly linear wideband LNTA, the first-ever high-IF SAW-less RX is thus demonstrated.

Receiver Architecture

The proposed RX is shown in Fig. 1. The input voltage is converted to current by LNTA and down-converted to high-IF by octal DT sampling mixer. After the mixer, the sampled down-converted signal is fed to the DT octal CS-BPF to attenuate images and out-of-band blockers. To reduce its power consumption, the decimation by 2 is performed for the 1st CS-BPF by integrating two samples, thus giving rise to the anti-aliasing *sinc*-type transfer function. In addition to the intrinsic 3rd/5th HR of the CS-BPF, further harmonics rejection can be performed by turning on the additional HR block. A 2nd CS-BPF is cascaded via inverter-based *g_m*-cells providing flicker-noise-free gain. The sufficient front-end filtering (unlike in [6]) allows to directly digitize the IF signal using a low power ADC, and move baseband filtering into digital

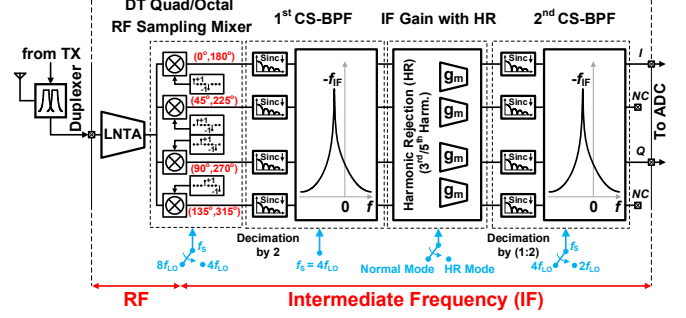
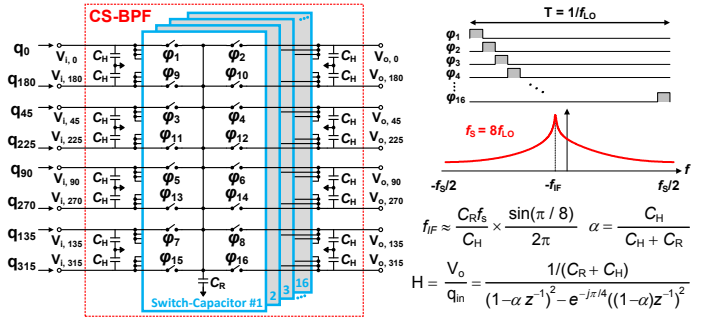


Fig. 1 Proposed SAW-less discrete-time superheterodyne receiver.



domain. As calculated, a 10b 400 MS/s ADC is enough after the two stages of CS-BPF filters, while consuming less than only 2mW with the state-of-the-art SAR ADC structure [7].

Charge-Sharing Band-Pass Filter (CS-BPF)

The proposed blocker-resilient octal CS-BPF of Fig. 2 features a sharp and highly linear transfer function (TF) in order to filter the images and out-of-band blockers even at 3rd/5th harmonics of LO. The inputs are charge packages ($q_0, q_{45} \dots$ and q_{315}) with different phases provided by the DT mixer. In each phase, ϕ_1 - ϕ_{16} , the rotating capacitor C_R takes a charge from the *input* C_H capacitor. In the following phase, C_R is connected to the *output* C_H , and so on. As shown in Fig. 2, this technique creates a complex BPF centered at $-f_F$ due to the charge-sharing between input charges of different 45° phases cascaded by the 1st-order LPF positioned at the output without any folding and replicas within $-f_s/2$ to $f_s/2$. The OB blocker filtering is improved significantly compared to [6] by increasing the number of input phases of CS-BPF and adding LPF pole between the complex poles due to the circulation of charge between the complex input charges. The center frequency of the filter is fully controllable by the ratio of C_R/C_H and sampling frequency, thus making it insensitive to PVT.

Harmonic Rejection (HR)

The principle of the proposed HR in CS-BPF is shown in Fig. 3 ("stage-1"). Although the 1st and 3rd/5th input harmonics are down-converted to the same IF frequency by the octal mixer, their phases remain preserved. Therefore, instead of storing the harmonic information in the frequency domain, as is the case before the mixer, it is now stored in the 8 mixer output lines and will be preserved as long as the number of lines is maintained. The charge-sharing phases of the signal for the 1st (blue) and 3rd (red) harmonics are shown in Fig. 3 (top). Fig. 3 (bottom) shows the corresponding phase rotation vectors. The

phase difference between two adjacent lines for the 1st and 3rd/5th harmonics are $\pi/4$ and $(-3\pi/4)/(-5\pi/4)$, respectively. This harmonic phase difference is sensed by CS-BPF. Their different transfer functions (TF) are shown in Fig. 3 (bottom). The HR is 22dB for each CS-BPF, which can be continuously improved by cascading CS-BPFs since the octal format fully preserves the harmonic information. HR is further improved by the proposed “stage-2” HR block. It consists of four X_1 blocks, each having three identical g_m -cells adding three adjacent vectors, resulting in amplification of 1st harmonic vectors and partial rejection of 3rd/5th harmonics. The two proposed techniques are insensitive to mismatches and do not require any calibration, whereas other well-known approaches, such as HR-mixers or g_m -weighting, are sensitive to mismatch. Also, HR of those approaches cannot be further improved because the combined output signals are converted to I/Q (quadrature), thus aliasing the harmonic information.

Low Noise Transconductance Amplifier

Fig. 4(a) shows the fully differential schematic of the proposed LNTA simultaneously featuring low NF and high IIP3 (only single-ended signals are shown). The noise-canceling common-gate transistors (M_{n1}/M_{n2}) provide the RX input matching. The noise-canceling operation is as follows: the input signal gets amplified by transistors M_{n1}/M_{n3} and M_{p1} in a differential feed-forward manner, whereas the M_{n1} channel thermal noise experiences subtraction at the output nodes because of the out-of-phase correlated noise voltages at V_x and V_{outn} . The 3rd-order non-linearity of M_{n1} and M_{n3} can be simultaneously cancelled at the differential output because M_{n1} and M_{n3} operate in weak and saturation regions, respectively, resulting in out-of-phase g_{m3} (3rd-order transconductance) to each other. Therefore, partial cancellation of IM3 component happens at the differential output. The cancellation happens at the desired frequency because at other frequencies an additional IM3 is generated due to the 2nd-order non-linearity of M_{n3} . Simulated (with extracted parasitics) NF of LNTA is 1.5–1.6dB across 0.85–2.5GHz.

Experimental Results

Fig. 7 shows the chip photo of the RX in TSMC 28nm CMOS. Measured NF is 2.1–2.6dB across 0.85–2.5GHz, as shown in Fig. 4(b), while providing 29–35dB gain. Peak IIP3 of +14dB is achieved for 2G/3G at max gain. The measured wideband TF in the normal and HR modes for three ICs is shown in Fig. 5(a). The IF image rejection of more than 65dB is achieved in all three ICs. The worst-case HR of 58dB is achieved when the HR-block is enabled: 44dB from the two-stage CS-BPFs and the rest from the HR-block. The measured normalized TF is shown in Fig. 5(b) for different bands. The RX bandwidth is 6.5MHz for 2G/3G and 20MHz for LTE, while IF frequency is -15MHz and -35MHz for 0.85–2.1GHz and 2.5GHz carriers, respectively. The RX consumes 24, 34 and 37mW from 0.9V supply at 0.85, 2.1 and 2.5GHz, respectively.

Table I compares the proposed DT-RX with state-of-the-art RXs. While being best-in-class in meeting the key performance parameters without any calibration, its power consumption and area are generally the lowest, and it does not suffer from any issues related to dc offsets, flicker noise or IM2 products since its IIP2 is infinite.

References

- [1] I. Fabiano et al., *JSSC*, vol. 48, no. 12, pp. 3067–3079, Dec. 2013.
- [2] M.D. Tsai et al., *ISSCC Dig. Tech. Papers*, pp. 354–355, 2014.

- [3] B. Liempd et al., *JSSC*, vol. 49, no. 8, pp. 1815–1826, Aug. 2014.
- [4] D. Murphy, et al., *ISSCC Dig. Tech. Papers*, pp. 68–69, 2014.
- [5] A. Mirzaei et al., *JSSC*, vol. 46, no. 12, pp. 2920–2932, Dec. 2011.
- [6] M. Tohidian, et al., *ISSCC Dig. pp.* 72–73, 2014.
- [7] B. Verbruggen, et al., *VLSI Symp.*, pp. C268–C269, 2013.

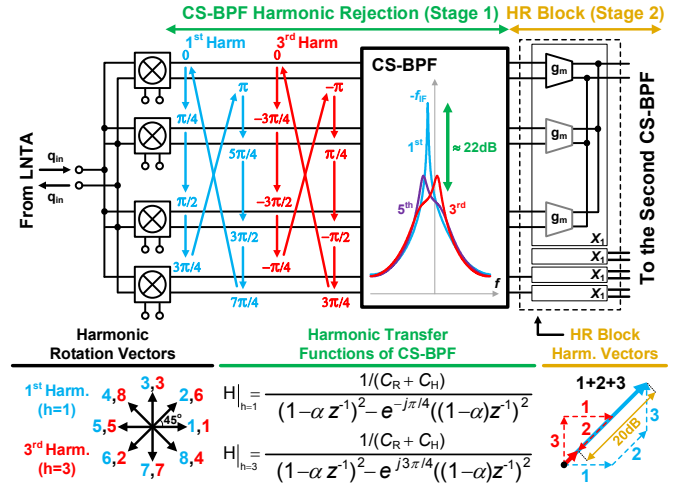


Fig. 3 Harmonic (3rd/5th) rejection in CS-BPF and HR-Block.

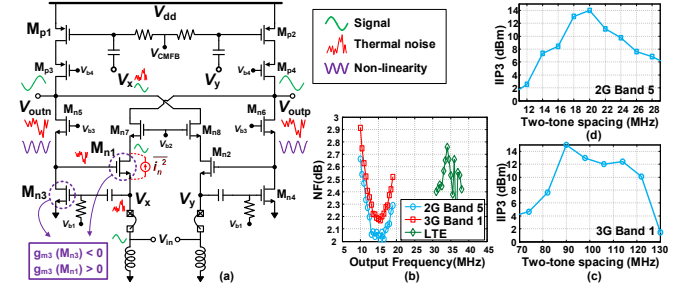


Fig. 4: (a) LNTA schematic, (b), (c) and (d) Measured RX NF, IIP3.

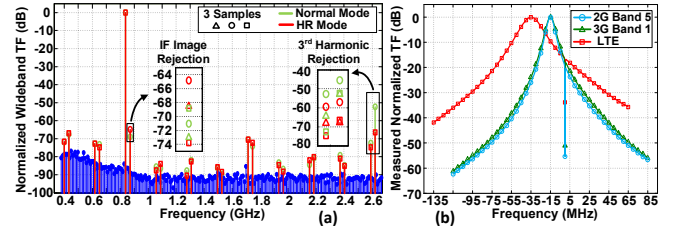


Fig. 5: Transfer function measurements of proposed SAW-less RX.

Table I Performance summary and comparison with state-of-the-art

| | This Work | [5] '11 Broadcom | [6] '14 TUD | [3] '14 IMEC | [4] '14 Broadcom | [1] '13 UPV | [2] '14 MediaTek |
|-------------------------|-------------|---------------------|----------------|-----------------|---------------------|----------------|---------------------|
| Technology | 28nm | 65nm | 65nm | 28nm | 28nm | 40nm | 40nm |
| Architecture | High-IF | High-IF | High-IF | ZIF | ZIF | ZIF | ZIF |
| NF [dB] | 2.1/2.2/2.6 | 2.8 | 3.2–4.5 | 1.8–3 | 1.7 | 3.8/1.9 | 1.7–2.4 |
| Supply [V] | 0.9 | 1.2/2.5 | 1.2/2 | 0.9 | 1.0 | 1.2/1.8 | 1.5 |
| HR [dB] | >58* | N/A | N/A | 50(70)* | 60/60 | 54/65 | N/A |
| IIP3 [dBm] | 14(OB) | -6.3(OB) | -7(1B) | 8/5 | 11.5(OB) | 18/16(OB) | 0.4(OB) |
| IIP2 [dBm] | Infinite | N/A | 85*(OB) | 55(88)* | 55(OB) | 64(OB) | 55(OB) |
| Power [mW] | 24/34/37 | ≈ 39 | 55–65 | 40/35 | 36–62 | 32/32 | 39–46.5 |
| Area [mm ²] | 0.52 | 0.76 | 1.1 | 0.6 | 5.2 | 0.84/0.74 | 0.57 |

* Worst-case without calibration * with calibration * Due to an IF Mixer

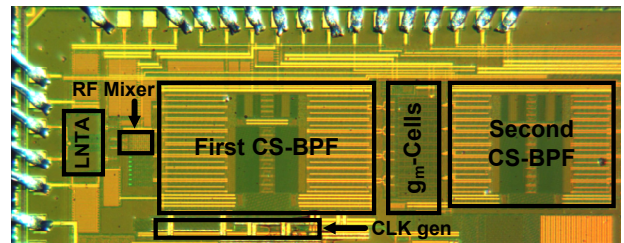


Fig. 7: Chip micrograph of the proposed SAW-less RX.