



| | |
|-------------------------------------|---|
| Title | Bovine tuberculosis statistics: 1978-1990 |
| Publication date | 1992-02 |
| Publication information | Bovine Tuberculosis Statistics: 1978-1990. University College Dublin. Centre for Veterinary Epidemiology and Risk Analysis, February, 1992. |
| Series | Selected Papers, 1990-1991 |
| Publisher | University College Dublin. Centre for Veterinary Epidemiology and Risk Analysis |
| Item record/more information | http://hdl.handle.net/10197/8842 |

Downloaded 2024-05-20 03:32:04

The UCD community has made this article openly available. Please share how this access benefits you. Your story matters! (@ucd_oa)



© Some rights reserved. For more information

APPENDIX

Bovine Tuberculosis Statistics: 1978 - 1990.

The statistics in the following figures have been compiled from data relating to the number of tuberculin tests carried out on cattle and the numbers of tuberculin reactors disclosed over the period 1978 - 1990. Statistics are presented at national level for all test types, and separately for annual round tests and reactor retests.

KEY:

NA: Number of animals tested.

PA: Number of reactor animals disclosed.

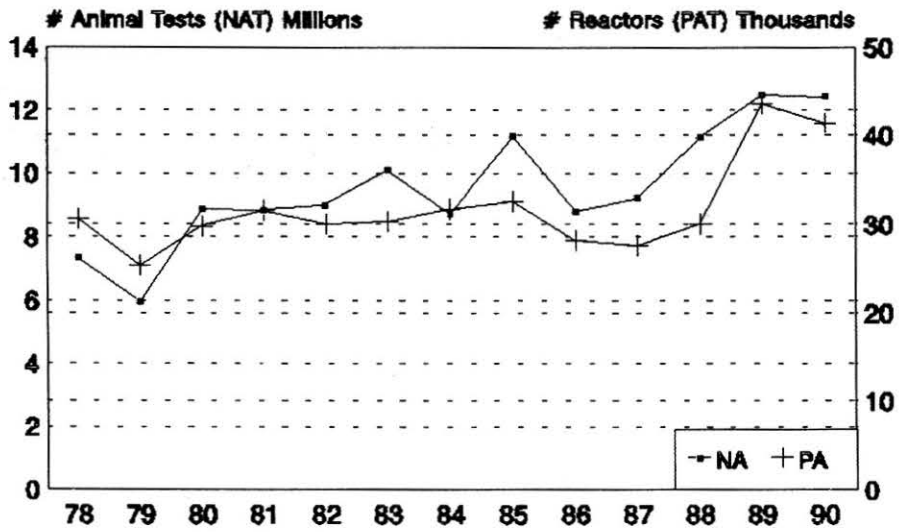
APT: The reactor disclosure rate per 1,000 animal tests performed.

NT: Number of herd tests.

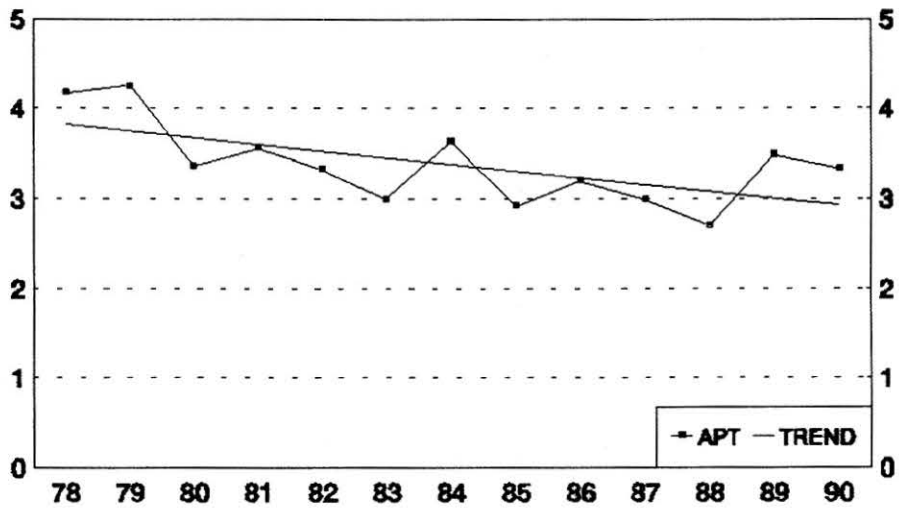
PT: Number of herd tests that disclosed reactors.

PER: The percentage of herd/part herd tests that disclosed reactors.

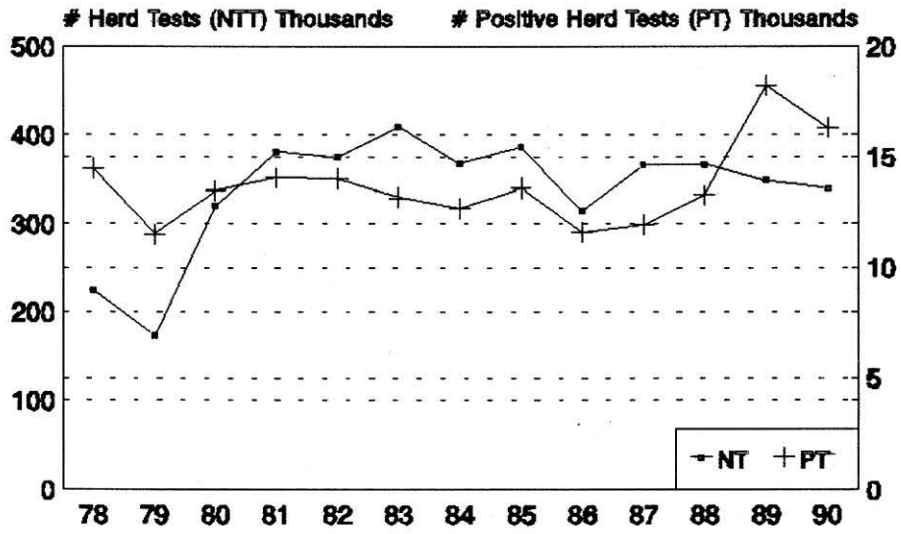
ANIMAL LEVEL All Tests



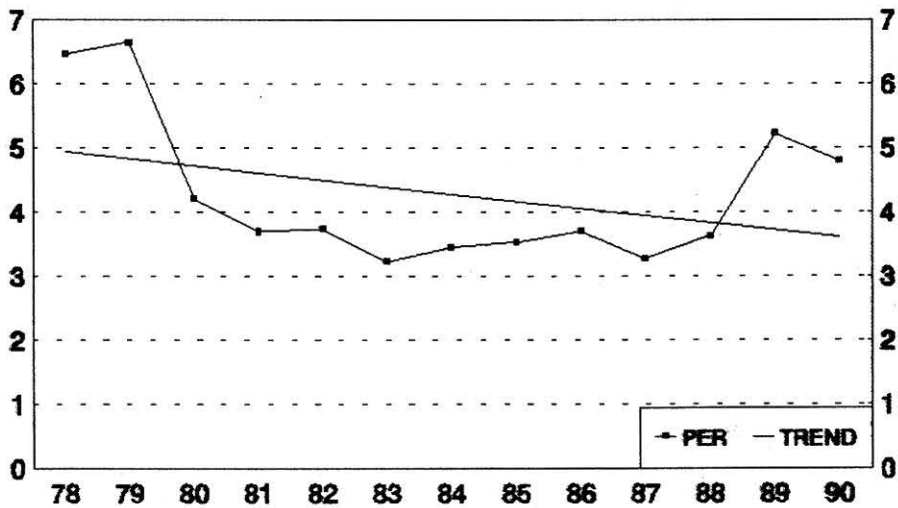
ANIMAL LEVEL All Tests



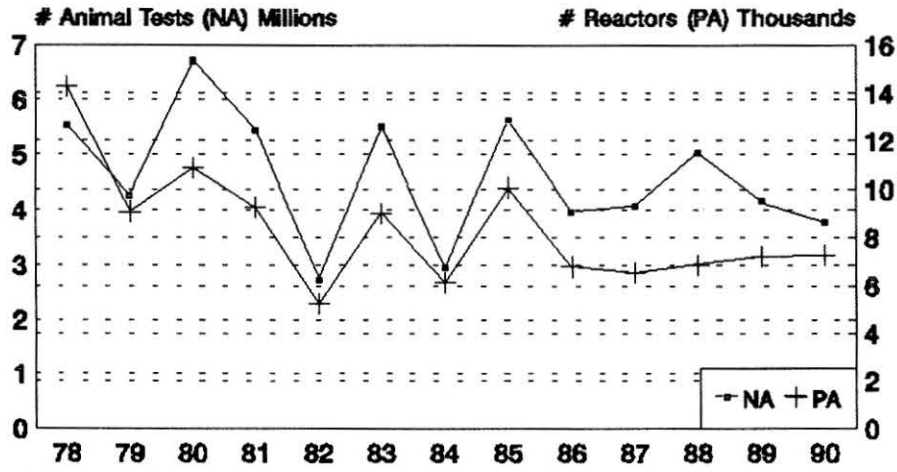
HERD LEVEL All Tests



HERD LEVEL All Tests

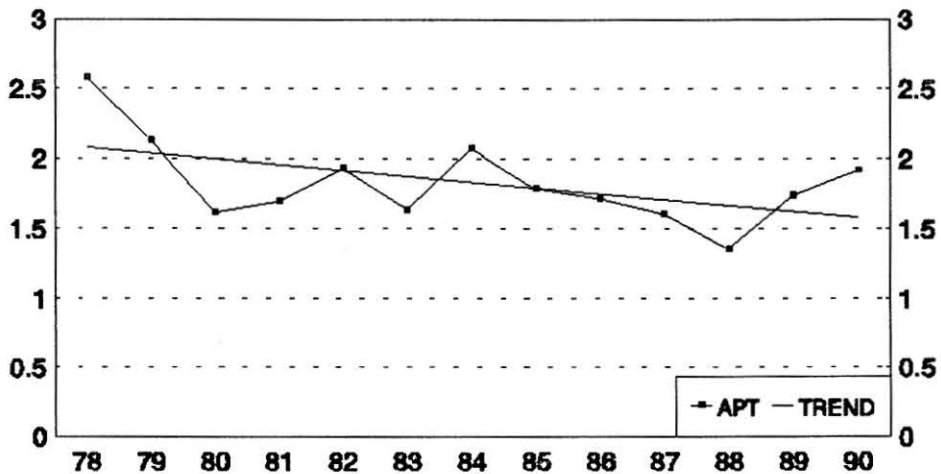


ANIMAL LEVEL Round Test - Test Type 1



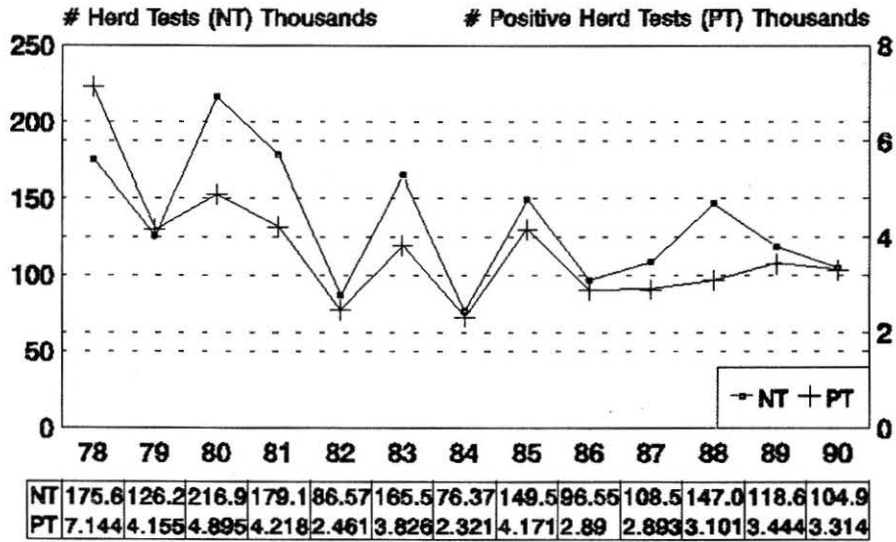
| | | | | | | | | | | | | | |
|----|-------|-------|-------|-------|-------|-------|-------|-------|-------|-------|-------|-------|-------|
| NA | 5.531 | 4.264 | 6.714 | 5.451 | 2.722 | 5.510 | 2.951 | 5.640 | 3.963 | 4.072 | 5.043 | 4.159 | 3.782 |
| PA | 14.26 | 9.08 | 10.87 | 9.26 | 5.255 | 9.032 | 6.133 | 10.08 | 6.797 | 6.551 | 6.88 | 7.225 | 7.266 |

ANIMAL LEVEL Round Test - Test Type 1

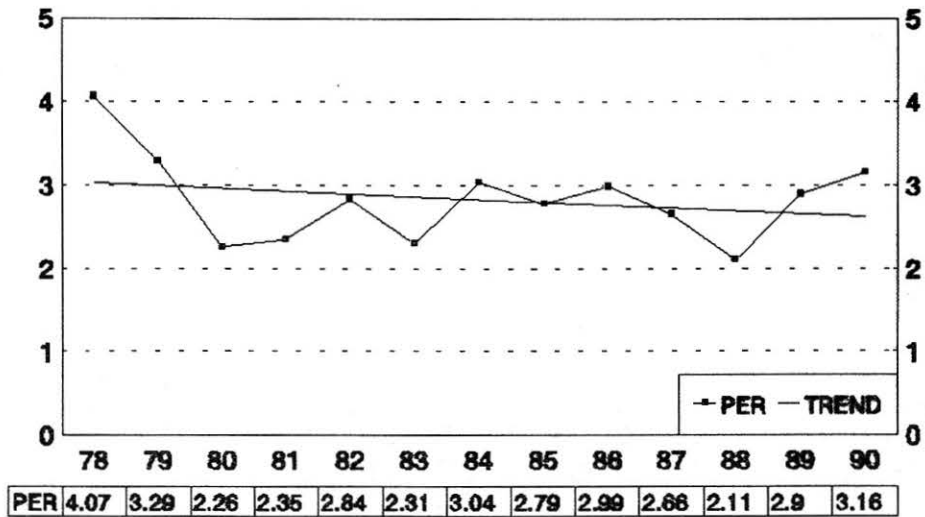


| | | | | | | | | | | | | | |
|-----|------|------|------|-----|------|------|------|------|------|------|------|------|------|
| APT | 2.58 | 2.13 | 1.62 | 1.7 | 1.93 | 1.64 | 2.08 | 1.79 | 1.72 | 1.61 | 1.36 | 1.74 | 1.92 |
|-----|------|------|------|-----|------|------|------|------|------|------|------|------|------|

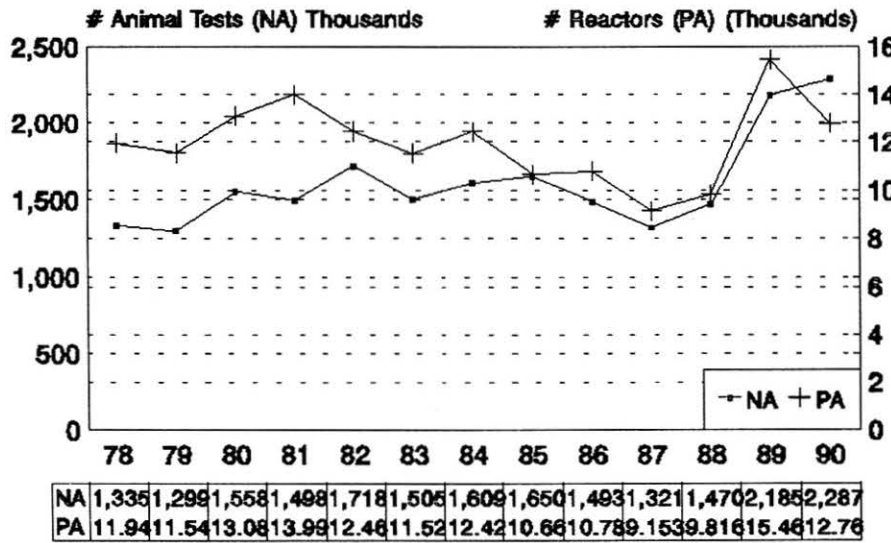
HERD LEVEL Round Test - Test Type 1



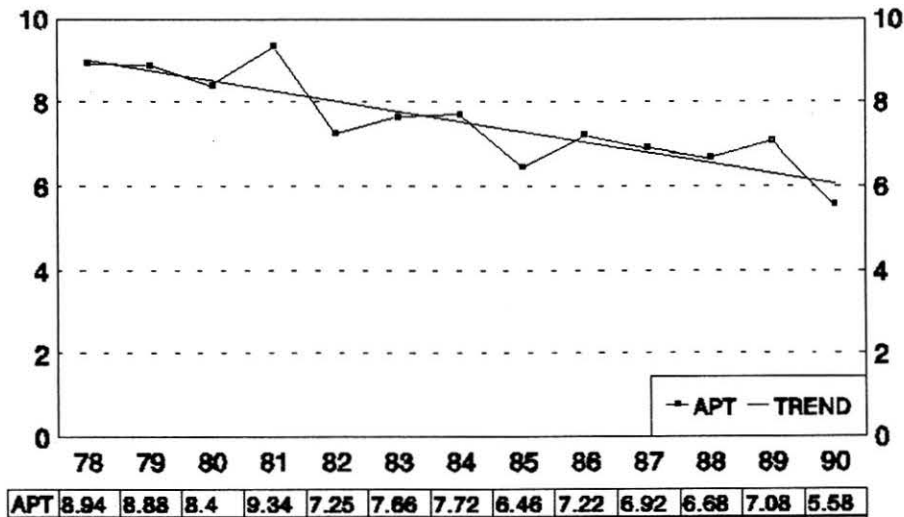
HERD LEVEL Round Test - Test Type 1



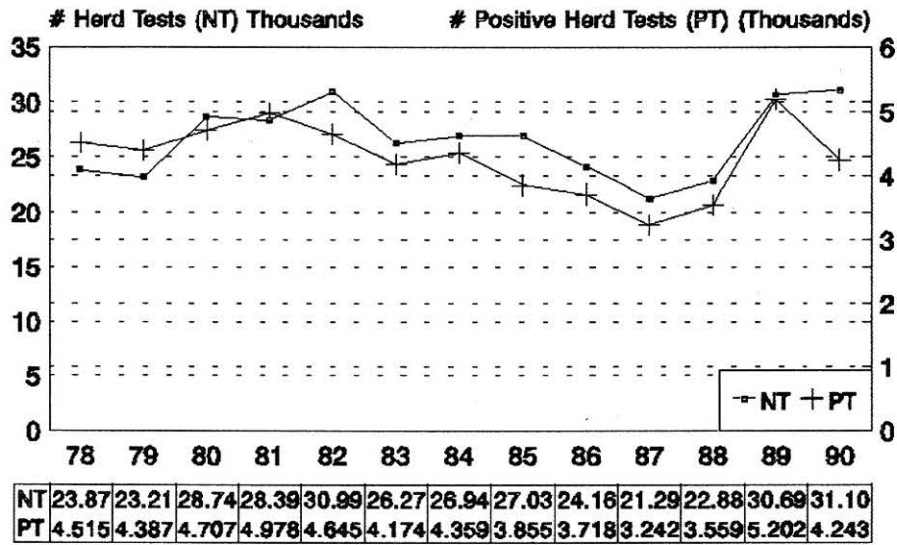
ANIMAL LEVEL Reactor Retest - Test Type 4



ANIMAL LEVEL Reactor Retest - Test Type 4



HERD LEVEL Reactor Retest - Test Type 4



HERD LEVEL Reactor Retest - Test Type 4

