



<b>Title</b>	Influence of preservation temperature on the measured mechanical properties of brain tissue
<b>Authors(s)</b>	Rashid, Badar, Destrade, Michel, Gilchrist, M. D.
<b>Publication date</b>	2013-04
<b>Publication information</b>	Rashid, Badar, Michel Destrade, and M. D. Gilchrist. "Influence of Preservation Temperature on the Measured Mechanical Properties of Brain Tissue" 46, no. 7 (April, 2013).
<b>Publisher</b>	Elsevier
<b>Item record/more information</b>	<a href="http://hdl.handle.net/10197/5947">http://hdl.handle.net/10197/5947</a>
<b>Publisher's statement</b>	This is the author's version of a work that was accepted for publication in Journal of Biomechanics. Changes resulting from the publishing process, such as peer review, editing, corrections, structural formatting, and other quality control mechanisms may not be reflected in this document. Changes may have been made to this work since it was submitted for publication. A definitive version was subsequently published in Journal of Biomechanics (46, 7, (2013)) DOI: <a href="http://dx.doi.org/10.1016/j.jbiomech.2013.02.014">http://dx.doi.org/10.1016/j.jbiomech.2013.02.014</a>
<b>Publisher's version (DOI)</b>	<a href="https://doi.org/10.1016/j.jbiomech.2013.02.014">10.1016/j.jbiomech.2013.02.014</a>

Downloaded 2024-07-15 20:16:36

The UCD community has made this article openly available. Please share how this access benefits you. Your story matters! (@ucd\_oa)



© Some rights reserved. For more information

Manuscript Number: BM-D-12-00689R1

Title: Influence of Preservation Temperature on the Measured Mechanical Properties of Brain Tissue

Article Type: Full Length Article (max 3500 words)

Keywords: Traumatic brain injury (TBI); Post-mortem; Shear; Ogden model; Temperature

Corresponding Author: Professor Michael D. Gilchrist, PhD, DEng

Corresponding Author's Institution: University College Dublin

First Author: Badar Rashid, PhD

Order of Authors: Badar Rashid, PhD; Michel Destrade, PhD, DSc; Michael D. Gilchrist, PhD, DEng

**Abstract:** The large variability in experimentally measured mechanical properties of brain tissue is due to many factors including heterogeneity, anisotropy, age dependence and post-mortem time. Moreover, differences in test protocols also influence these measured properties. This paper shows that the temperature at which porcine brain tissue is stored or preserved prior to testing has a significant effect on the mechanical properties of brain tissue, even when tests are conducted at the same temperatures. Three groups of brain tissue were stored separately at three preservation temperatures, i.e., ice cold, room temperature (22°C) and body temperature (37°C), prior to them all being tested at room temperature (~22°C). Significant differences in the corresponding initial elastic shear modulus  $\mu$  (Pa) (at various amounts of shear,  $K = 0-0.2$ ) were observed. The initial elastic moduli were  $1043 \pm 271$  Pa,  $714 \pm 210$  Pa and  $497 \pm 156$  Pa (mean  $\pm$  SD) at preservation temperatures of ice cold, 22°C and 37°C, respectively. Based on this investigation, it is strongly recommended that brain tissue samples must be preserved at an ice-cold temperature prior to testing in order to minimize the difference between the measured in vitro test results and the in vivo properties. A by-product of the study is that simple shear tests allow for large, almost perfectly homogeneous deformation of brain matter.



UCD School of Mechanical and  
Materials Engineering

Scoil na hInnealtóireachta  
Meicniúla agus Ábhar UCD

University College Dublin,  
Belfield, Dublin 4, Ireland

An Coláiste Ollscoile Baile Átha Cliath,  
Belfield, Baile Átha Cliath 4, Eire

T +353 1 716 1884/1787/1757  
F +353 1 283 0534

mme@ucd.ie  
[www.ucd.ie/eacollege/mme/](http://www.ucd.ie/eacollege/mme/)

Miss Raquel Redondo  
Editorial Office  
Journal of Biomechanics

Dear Miss Redondo,

**BM-D-12-00689**

Thank you for your email of December 15<sup>th</sup>. As promised, I am sending you our revised manuscript which we wish to have reconsidered for publication in the journal.

Kind regards,

A handwritten signature in blue ink that reads 'M. Gilchrist'.

---

Michael Gilchrist

### **Suggested Reviewers**

Dr Jiangyue Zhang  
Medical College of Wisconsin  
[jy Zhang918@gmail.com](mailto:jy Zhang918@gmail.com)

Prof. Narayan Yoganandan  
Medical College of Wisconsin  
[yoga@mcw.edu](mailto:yoga@mcw.edu)

Prof. Jeff Crandall  
Biomedical Engineering, University of Virginia  
[jrc2h@virginia.edu](mailto:jrc2h@virginia.edu)

Prof. Hans Van Dommelen  
Biomedical Engineering, University of Eindhoven  
[j.a.w.v.dommelen@tue.nl](mailto:j.a.w.v.dommelen@tue.nl)

**Rebuttal to reviewers' concerns.**

**Ref.: Ms. No. BM-D-12-00689 Influence of Preservation Temperature on the Mechanical Properties of Brain Tissue Journal of Biomechanics**

Dear Editor,

Thank you for your patience. Please consider our revised manuscript for publication. Herewith below is our response to each of the reviewers' suggestions.

*Reviewer #1:*

*This paper reports that preservation at room temperature and body temperature for maximum 5h post mortem causes a significant decrease in the elastic shear modulus of porcine brain tissue as measured by parallel plates shear experiments.*

*In my opinion this paper has some strengths but major weaknesses and therefore I don't recommend it for publication in Journal of Biomechanics.*

*Strengths:*

*1. Using cubic shape samples of brain tissue for shear experiments with reasonably small height (4 mm) to keep the experiments close to the ideal simple shear test.*

Thank you. We do think that the simple shear test is the most appropriate for testing of brain matter at large strains. We have emphasized this point in the revised version.

*2. The explanation of hyperelastic solution using an Ogden-type material is comprehensive.*

Thank you. We have emphasized this point by removing the subsection on “local” moduli, which didn't make any significant point in the context of finite deformations.

*3. The use of FE solution to verify the analytical solution.*

Thank you. We have emphasized the excellent agreement between numerical and experimental results.

*Weaknesses:*

*1. The significance of this paper is its major weakness. It is rather obvious that a tissue with high protein content should be stored in the refrigerator to preserve its mechanics integrity. It is well-known that preservation at higher temperatures (22 and beyond) for 5 h or so without providing a culture environment would result in speeding autolysis and degradation of mechanical integrity of tissue. It is not clear to me that who would benefit from the main results of this study.*

Thank you for this constructive comment. It is true that we might have been overly cautious in the previous version of the paper and did not make our point strongly enough. With this paper we are addressing a contradiction in the literature and a lack of

consistency with respect to guidelines on preservation temperature. We have made this point more forcefully now. We have shown that higher temperature means softer brain tissue, which was not clear from reading other articles. We have explained that brain tissue should be preserved at ice-cold temperature in order to stiffen it, and bridge the gap between in vitro and in vivo configurations. Indeed, when a sample is extracted, residual stresses are released and the material is then much softer than it would be in vivo.

*2. The strain time history is not reported. For any variability in rate during loading, viscoelasticity becomes important.*

*3. Viscoelasticity of brain is completely ignored in this study.*

It is true that we have not modeled viscoelasticity here, simply because we have done so in other papers and didn't want to repeat ourselves. The present paper focuses on temperature effects, and we treated that factor in isolation. We performed all the experiments at 30/s, a rate compatible with traumatic brain injury.

*4. Sample of mixtures of white and gray matter were used (line 80) while it was better to test white and gray matter separately.*

This was indeed a limitation of our study. It was due to the dimensions chosen for the tests. We now mention that limitation in the Discussion paragraphs.

*5. Section 3.2 talks about elastic moduli and Table 1 says  $E_i$  are Young's moduli while this is impossible. For brain, the Young's modulus should be about 3 times its shear modulus. It seems that these numbers are in fact local shear moduli. This section could be removed as the next section provides a more comprehensive analysis of the tests.*

The reviewer is absolutely right: the tangent to the shear stress response is the shear modulus, not the Young's modulus, which is the tangent to the tensile stress response, and is indeed 3 times the shear modulus in linear incompressible elasticity. Moreover, we agree that the section does not bring anything substantial and we thus removed it.

*6. The fits shown in Figure 4 show that the beginning of deformation is not fitted closely and the softening behavior seen beyond  $K=0.8$  also is not modeled properly. The paper fails to explain these issues.*

The waviness of the experimental data was indeed a problem. It was exacerbated at the low levels of shear (where small experimental errors lead to big differences in stress levels) and at the high level of shear (where problems associated with large deformations arose). We re-conducted a series of experiments with a better attachment

procedure to deal with the latter, and we used the data smoothing capabilities of Matlab to attenuate the former.

*Reviewer #2: This reviewer would like to commend the authors for a well written informative and important paper.*

*This reviewer would recommend that the authors add a few sentences on the effect of the amount of adhesive used on the tissue samples on the shear force or stiffness generated in the test. Was the thickness of adhesive varied to see what it's effect would be? Parametric studies to determine the effect of other parameters, ie, specimen thickness, tissue anisotropy, etc, on test results?*

Yes, it was very important to check the variability in the experimental data due to different amount of surgical glue used.

The use of a thin layer of surgical glue (approximately one drop on each platen) proved reliable for the attachment of brain tissue and did not alter the stiffness of the tissue. This factor was further investigated by performing a separate set of simple shear experiments with variable specimen thicknesses (~ 2.0, 3.0, 4.0, 5.0, 6.0 mm) at the same strain rate (30/s). No difference in results was observed, thus proving the reliability of this test protocol (as discussed in Section 2.3). Moreover, finite element simulations were also performed using the one-term Ogden parameters ( $\mu = 1050$  Pa,  $\alpha = 4.1$  for ice cold conditions) as shown in Fig. 5. Excellent agreement between the shear stress profiles at variable specimen thickness was achieved ( $p = 0.9978$  based on one way ANOVA).

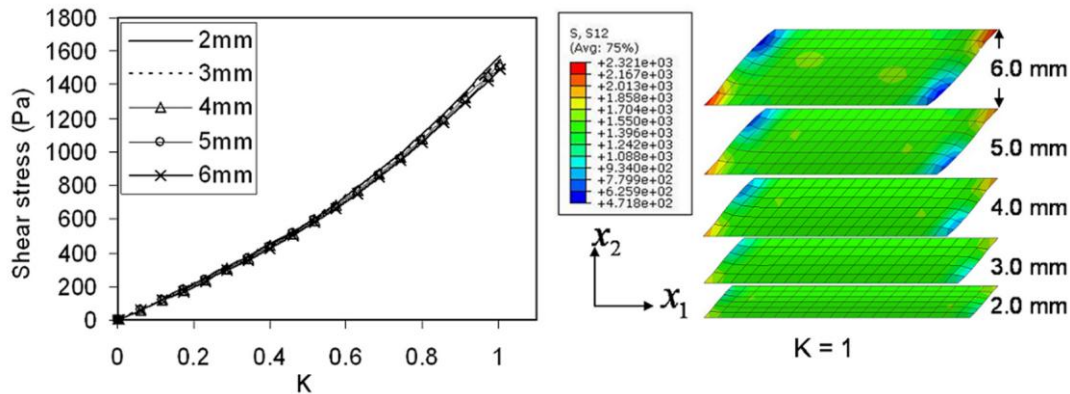


Fig. 5 – Consistency in shear stress profiles using Ogden material parameters obtained at a strain rate of 30/s.

The above information is now included in the revised manuscript (Discussion Section 4).

# Influence of Preservation Temperature on the Measured Mechanical Properties of Brain Tissue

Badar Rashid<sup>a</sup>, Michel Destrade<sup>b,a</sup>, Michael Gilchrist<sup>a\*</sup>

<sup>a</sup>*School of Mechanical and Materials Engineering, University College Dublin, Belfield, Dublin 4, Ireland*

<sup>b</sup>*School of Mathematics, Statistics and Applied Mathematics, National University of Ireland Galway, Galway, Ireland*

\*Corresponding Author

Tel: + 353 1 716 1884/1991, + 353 91 49 2344 Fax: + 353 1 283 0534

Email: [Badar.Rashid@ucdconnect.ie](mailto:Badar.Rashid@ucdconnect.ie) (B. Rashid), [michael.gilchrist@ucd.ie](mailto:michael.gilchrist@ucd.ie) (M.D. Gilchrist), [michel.destrade@nuigalway.ie](mailto:michel.destrade@nuigalway.ie) (M. Destrade)

**Abstract** The large variability in experimentally measured mechanical properties of brain tissue is due to many factors including *heterogeneity, anisotropy, age dependence* and *post-mortem time*. Moreover, differences in test protocols also influence these measured properties. This paper shows that the temperature at which porcine brain tissue is stored or preserved prior to testing has a significant effect on the mechanical properties of brain tissue, even when tests are conducted at the same temperatures. Three groups of brain tissue were stored separately at three preservation temperatures, i.e., ice cold, room temperature (22°C) and body temperature (37°C), prior to them all being tested at room temperature (~22°C). Significant differences in the corresponding initial elastic shear modulus  $\mu$  (Pa) (at various amounts of shear,  $K = 0-0.2$ ) were observed. The initial elastic moduli were  $1043 \pm 271$  Pa,  $714 \pm 210$  Pa and  $497 \pm 156$  Pa (mean  $\pm$  SD) at preservation temperatures of ice cold, 22°C and 37°C, respectively. Based on this investigation, it is strongly recommended that brain tissue samples must be preserved at an ice-cold temperature prior to testing in order to minimize the difference between the measured *in vitro* test results and the *in vivo* properties. A by-product of the study is that simple shear tests allow for large, almost perfectly homogeneous deformation of brain matter.

**Keywords:** *Traumatic brain injury (TBI), Post-mortem, Shear, Ogden model, Temperature*



# 1 Introduction

Extensive research has been carried out over the past five decades to characterize the mechanical properties of brain tissue in order to establish realistic constitutive relationships over a wide range of loading conditions. In particular, there is a pressing need to characterize brain tissue properties over the expected loading rate associated with traumatic brain injuries (TBIs). However, the reliable determination of brain tissue properties is a formidable challenge, as it depends heavily on various experimental parameters.

A limited number of studies has investigated the effects of variable temperatures (Brands et al., 2000; Peters et al., 1997; Shen et al., 2006). Hrapko et al. (2008) stored brain samples in phosphate buffered saline (PBS) in a box filled with ice during transportation and maintained at  $\sim 4^{\circ}\text{C}$  before testing. Tests were conducted at room temperature ( $23^{\circ}\text{C}$ ) and at body temperature ( $37^{\circ}\text{C}$ ). The measured results were clearly temperature dependent and the dynamic modulus  $G^*$  was 60% higher at  $23^{\circ}\text{C}$  than at  $37^{\circ}\text{C}$ . This clearly indicates that testing brain tissue at higher temperature accelerates degradation of the mechanical integrity of tissue, thus further deviating from *in vivo* test conditions. However, in a different study by Zhang et al. (2011), brain samples were preserved in ice cold (group A, 10 samples) and in  $37^{\circ}\text{C}$  (group B, 9 samples) saline solutions. All samples were warmed to a temperature of  $37^{\circ}\text{C}$  in a saline bath prior to testing. The stress response from brain samples preserved at  $37^{\circ}\text{C}$  was 2.4 times stiffer at 70% strain, than when preserved at the ice-cold temperature. These findings directly contradict the study by Hrapko et al. (2008), thus leading to inconclusive results and raising important questions: Do higher temperatures lead to a stiffer or a softer response? At which

temperature should brain samples be stored prior to testing? In the literature, protocols vary greatly: for instance, Pervin and Chen (2009; 2011) stored tissues at 37°C, whereas Miller and Chinzei (1997; 2002), Tamura et al., (2008; 2007) and Rashid et al., (2012b,c) stored brain tissues at ice cold /4–5°C before the tests. The reliability of experimental data obtained from the tissue preserved at higher temperature (37°C) is questionable based on the contradictory findings of existing studies (Zhang et al. (2011); Hrapko et al. (2008)). It is, therefore, crucial to clearly understand the behavior of tissue under different preservation temperature conditions, with a view to achieving reliable material parameters.

With this aim in mind, simple shear tests were performed on brain tissue at a strain rate of 30/s and up to 62% engineering shear strain (amount of shear,  $K = 1$ ) under different temperature conditions. Three groups of brain tissue were stored separately at three preservation temperatures: ice cold, room temperature (22°C) and body temperature (37°C), whereas experimentation was performed at an approximately constant room temperature (~22°C). The simple shear test protocol is adopted here because of its high reliability due to a global homogeneous deformation field of brain tissue as compared to compression and tension test protocols, which lead to inhomogeneous deformation fields (Ogden, 1997; Rashid et al., 2012a).

## **2 Materials and Methods**

### **2.1 Simple Shear Experimental Setup**

A High Rate Shear Device (HRSD) as described in Fig. 1 (a) and (b) was used to perform simple shear tests at a dynamic strain rate of 30/s. The development and major

components of the HRSD have been discussed elsewhere (Rashid, 2012). During tests, the top platen remained stationary while the lower platen moved horizontally to produce the required simple shear deformation in the specimen, as shown in Fig. 1. Force (N) and displacement (mm) signals were captured simultaneously through the data acquisition system at a sampling rate of 10 kHz. The amount of shear is  $K = d/y$ , where  $d$  is the displacement of the lower platen (mm) and  $y$  is the thickness of the specimen (mm). The intended velocity of the electronic actuator was 120 mm/s in order to achieve a strain rate of 30/s (typical rate associated with TBIs) for a 4.0 mm thick specimen (maximum amount of shear,  $K = 1$ ). However, the actual loading velocity was slightly higher (130 mm/s) in order to overcome the frictional effects and opposing spring force acting against the *striker*, which was adjusted during the calibration process.

## 2.2 Specimen Preparation Procedure

Nine fresh porcine brains from approximately six-month old pigs were collected from a local slaughterhouse and tested within 5 h postmortem. The brains were divided into three groups and preserved in a physiological saline solution at three temperatures (3 brains each in ice cold, 22°C and 37°C) during transportation. All samples were prepared and tested at a nominal room temperature of 22°C. Square specimens as shown in Fig 2, composed of mixed white and gray matter were prepared using a square steel cutter after removing the dura and arachnoid from the cerebral hemispheres. Two specimens were extracted from each cerebral hemisphere from the medial to lateral direction. The thickness, width and length of specimens before testing were  $4.0 \pm 0.2$  mm,  $19.0 \pm 0.1$  mm and  $19.0 \pm 0.1$  mm (mean $\pm$ SD), respectively. 36 specimens were prepared from the 9 brains (4 specimens from each brain). The time elapsed between harvesting of the first

and last specimens from each brain was approximately 18 minutes. Physiological saline solution was applied to the specimens frequently during cutting and before the tests in order to prevent dehydration.

### **2.3 Specimen Attachment Procedure**

The surfaces of the platens were first covered with a masking tape substrate to which a thin layer of surgical glue (Cyanoacrylate, Low-viscosity Z105880-1EA, Sigma-Aldrich) was applied. The prepared specimens of brain tissue were then placed on the lower platen. The top platen was attached to the 5 N load cell, and was then lowered slowly so as to just touch the top surface of the specimen. One minute settling time was sufficient to ensure proper adhesion of the specimen to the platens. Before mounting the brain specimens for simple shear tests, calibration of the HRSD was performed to ensure uniform velocity at a strain rate of 30/s.

## **3 Results**

### **3.1 Simple Shear Experiments**

Ten tests were performed for each preservation temperature condition (ice-cold, room temperature: 22°C and body temperature: 37°C) at a strain rate of 30/s, as shown in Fig. 3. The force (N), sensed by the load cell attached to the top platen, was divided by the surface area in the reference configuration to determine the shear stress (Pa). Similarly, the displacement was divided by the original thickness of the specimen to determine the amount of shear  $K$ . During simple shear tests, the achieved strain rate was  $30 \pm 1.65$  /s, (mean $\pm$ SD) against the required loading velocity of 120 mm/s.

The maximum shear component of the Cauchy stress (at maximum amount of shear,  $K = 1$ ) at preservation temperatures of ice cold, 22 and 37°C was  $1545 \pm 383$  Pa,  $1019 \pm 295$  Pa and  $699 \pm 195$  Pa (mean  $\pm$  SD), respectively, as shown in Fig. 3.

### 3.2 Hyperelastic Material Parameters

Now it is useful to estimate the nonlinear material parameters based on simple shear data at variable temperature conditions. In the Rectangular Cartesian coordinate system aligned with the edges of the undeformed specimen, the simple shear deformation can be written as

$$x_1 = X_1 + KX_2, x_2 = X_2, x_3 = X_3 \quad (1)$$

where  $K$  is the amount of shear,  $\underline{x}$  is the current coordinate and  $\underline{X}$  the reference coordinate. Using Eq. (1), the deformation gradient tensor  $\underline{\mathbf{F}}$  and the right Cauchy-Green deformation tensor  $\underline{\mathbf{C}} = \underline{\mathbf{F}}^T \underline{\mathbf{F}}$  are

$$\underline{\mathbf{F}} = \begin{bmatrix} 1 & K & 0 \\ 0 & 1 & 0 \\ 0 & 0 & 1 \end{bmatrix}, \quad \underline{\mathbf{C}} = \underline{\mathbf{F}}^T \underline{\mathbf{F}} = \begin{bmatrix} 1 & K & 0 \\ K & 1 + K^2 & 0 \\ 0 & 0 & 1 \end{bmatrix} \quad (2)$$

In general, an isotropic hyperelastic incompressible material is characterized by a strain-energy density function  $W$  which is a function of two principal strain invariants only:

$W = W(I_1, I_2)$ , where  $I_1$  and  $I_2$  as defined as (Ogden, 1997).

$$I_1 = \text{tr}(\underline{\mathbf{C}}), \quad I_2 = \frac{1}{2} [I_1^2 - \text{tr}(\underline{\mathbf{C}}^2)], \quad (3)$$

But in the present case of simple shear deformation,

$$I_1 = I_2 = 3 + K^2 \quad (4)$$

$$\text{so that } W = W(3 + K^2, 3 + K^2) \equiv \hat{W}(K) \text{ say.} \quad (5)$$

The shear component of the Cauchy stress tensor is (Ogden, 1997):

$$\sigma_{12} = 2K \left( \frac{\partial W}{\partial I_1} + \frac{\partial W}{\partial I_2} \right) = \hat{W}'(K) \quad (6)$$

The Cauchy shear stress component  $\sigma_{12}$  was evaluated as  $\sigma_{12} = F/A$ , where  $F$  is the shear force, and  $A$  is the area of a cross section of the specimen, which remains unchanged in simple shear (so that  $\sigma_{12} = S_{12}$ , the nominal shear stress component). The experimentally measured shear stress component was then compared to the predictions of the hyperelastic model from the relation  $\sigma_{12} = \hat{W}'(K)$  (Ogden, 1997), and the material parameters were adjusted to give good curve fitting. The fitting was performed using the *lsqcurvefit.m* function in MATLAB. The shear response curves in Fig. 3 clearly showed a non-linear relationship, which ruled out the Mooney-Rivlin and neo-Hookean models. We chose the one-term Ogden hyperelastic model because it gave excellent fitting with only two fitting parameters. It is given by

$$W = \frac{2\mu}{\alpha^2} (\lambda_1^\alpha + \lambda_2^\alpha + \lambda_3^\alpha - 3) \quad (8)$$

where the  $\lambda_i$  are the principal stretch ratios (the square roots of the eigenvalues of  $\underline{\mathbf{C}}$ ),  $\mu > 0$  is the infinitesimal shear modulus, and  $\alpha$  is a stiffening parameter. In simple shear:

$$\lambda_1 = \frac{K}{2} + \sqrt{1 + \frac{K^2}{4}}, \lambda_2 = \lambda_1^{-1} = -\frac{K}{2} + \sqrt{1 + \frac{K^2}{4}}, \lambda_3 = 1, \quad (9)$$

and the Cauchy shear stress component  $\sigma_{12}$  is thus

$$\sigma_{12} = \hat{W}'(K) = \frac{\mu}{\alpha} \frac{1}{\sqrt{1 + \frac{K^2}{4}}} \left[ \left( \frac{K}{2} + \sqrt{1 + \frac{K^2}{4}} \right)^\alpha - \left( -\frac{K}{2} + \sqrt{1 + \frac{K^2}{4}} \right)^\alpha \right]. \quad (10)$$

When  $\alpha = 2$ , it reduces to a linear relationship,  $\sigma_{12} = \mu K$ , because the  $W$  function is then that of the neo-Hookean model. When  $\alpha < 2$ , the material softens in shear. Here, it clearly stiffens in shear, and we thus expect that  $\alpha > 2$ . The material parameters  $\mu$  and  $\alpha$  derived after fitting Eq. (10) to average shear stress – engineering shear strain profiles (Fig. 3) are summarized in Table 2. Sometimes the waviness in experimental data affected the values of the stiffening parameter  $\alpha$  and we then used the data smoothing capabilities of Matlab to reduce the influence of data noise. Note that the largest stretch was attained when  $K = 1$  in our experiments, giving  $\lambda_1 = 1.618$ , according to Eq. (9), i.e., a strain of 62%. We observed a significant decrease in initial shear modulus  $\mu$  with the increase in temperature as shown in Table 1, while the (nonlinear) stiffening parameter  $\alpha$  remained almost constant.

### 3.3 Finite Element Simulations

In order to check whether the assumption of homogeneous simple shear was reasonable for our dimensions and protocols, we prepared a brain tissue specimen geometry in ABAQUS 6.9 to mimic experimental conditions (discussed in Section 2.2). We used 2166 x C3D8R elements, default hourglass control, mass density of  $1040 \text{ kg/m}^3$  and material parameters listed in Table 1 for the numerical simulations. The top surface of the specimen was constrained in all directions whereas the lower surface was allowed to move only in the lateral direction ( $x_1$ - axis) in order to reach the maximum amount of shear,  $K = 1$ . Visual inspection, coupled to a one-way ANOVA test, revealed excellent agreement between the average experimental and numerical shear stresses ( $p = 0.9215$  at ice cold,  $p = 0.9333$  at  $22^\circ\text{C}$  and  $p = 0.8489$  at  $37^\circ\text{C}$ ), as shown in Fig. 4 (a). A significant difference ( $p = 0.0004$ ) existed between the shear stresses at ice cold and  $37^\circ\text{C}$ , as clearly

depicted in Fig. 4 (a) and (b). There was a 34% decrease in  $\mu$  from ice cold to 22°C and a 31.4% decrease from 22°C to 37°C, which clearly indicates the stiffening response of brain tissue with lower preservation temperatures. An almost homogeneous deformation was achieved throughout the sample during experimentation and during numerical simulations according to Figs. 4 (c) and (d), which gives credence to the reliability of the simple shear test protocol.

## 4 Discussion

The material parameters obtained from fitting the shear response curve to the predictions of a one-term Ogden strain energy function showed a significant increase in initial shear modulus,  $\mu$ , with lower preservation temperatures:  $\mu = 500.7$  Pa for 37°C,  $\mu = 715.3$  Pa for 22°C, and  $\mu = 1050$  Pa for ice-cold. The stresses for the ice-cold preservation temperature are 1.5 times higher than for body temperature (37°C), while performing tests at the same room temperature (22°C) and at the maximum amount of shear ( $K=1$ ), as clearly shown in Fig 4 (a).

Miller and Chinzei (1997) performed *in vitro* unconfined compression tests on porcine brain tissue having 5°C as the preservation temperature. However, the forces measured during *in vivo* indentation tests (Miller et al., 2000) were 31% higher than during *in vitro* tests (Miller and Chinzei, 1997). Presumably, the existing difference (31%) between the *in vivo* and *in vitro* results would increase further if brain tissue was preserved at higher temperatures (37°C), because of the decrease in tissue stiffness clearly observed in our experiments (see Fig. 4 (a)). Conversely, if brain tissue was preserved at a lower (ice-cold) temperature, then its stiffness would increase and the gap of 31% would be reduced.



Therefore, an ice cold  $(4-5^{\circ}\text{C})$  preservation temperature is necessary to minimize the difference between *in vitro* and *in vivo* results and to partially compensate for the loss of stiffness due to the release of residual stress when extracting samples.

Garo et al. (2007) found no significant changes in the mechanical properties ( $p = 0.95$ ) of the brain tissue for samples tested between 2 and 6 h *post-mortem*. Similarly, McElhaney et al. (1973) reported no significant changes up to 15 h *post-mortem* and Nicolle et al. (2004) found only a 6% increase in the linear viscoelastic response for samples tested at 24 and 48 h of *post-mortem*. Darvish and Crandall (2001) found no correlation between time and variation in mechanical properties for the tests conducted between 3–16 days later. Only the study conducted by Metz et al. (1970) reported a 30–70% decrease in the tissue response from live to 3–4 hour *post-mortem* time. In the present study, all tests were completed within 5 h of *post-mortem* in order to minimize the possibility of variations in experimental data potentially linked to the post-mortem time interval.

The use of a thin layer of surgical glue (approximately one drop on each platen) proved reliable for the attachment of brain tissue and did not alter the stiffness of the tissue. This factor was further investigated by performing a separate set of simple shear experiments with variable specimen thicknesses (~2.0, 3.0, 4.0, 5.0, 6.0 mm) at the same strain rate (30/s). No difference in results was observed, thus proving the reliability of this test protocol (as discussed in Section 2.3). Moreover, finite element simulations were also performed using the one-term Ogden parameters ( $\mu = 1050$  Pa,  $\alpha = 4.1$  for ice cold conditions), as shown in Fig. 5. Excellent agreement between the shear stress profiles at variable specimen thickness was achieved ( $p = 0.9978$  based on one way ANOVA).

A limitation of this study is the estimation of *global* material parameters from the strain energy functions, based on *average* mechanical properties (mixed white and gray matter) of the brain tissue. However, our results are still useful in modelling the approximate behaviour of brain tissue, in line with the procedure followed by Miller and Chinzei (1997; 2002).

In order to fully characterize the behavior of brain tissue, viscoelastic tests (stress relaxation tests) are usually performed to obtain one set of parameters; however, the deterioration in tissue properties due to higher preservation temperature affects both the hyperelastic and the viscoelastic parameters. Therefore in this study, only the hyperelastic behavior of brain tissue was considered so as to investigate the effects of preservation temperature in isolation.

## 5. Conclusions

The following results can be concluded from this study:

1. Measured brain tissue properties are significantly influenced by the preservation temperatures (one-term Ogden initial shear modulus,  $\mu = 500.7$  Pa at 37°C,  $\mu = 715.3$  Pa at 22°C and  $\mu = 1050$  Pa for ice cold preservation temperature).
2. Brain tissue must be preserved at an ice cold temperature prior to testing in order to minimize the difference between the measured *in vitro* and actual *in vivo* properties.
3. The simple shear test is most suitable for the reliable collection of results, based on an almost perfectly homogeneous deformation field, even at large strains (up to 60%).

**Acknowledgements** This work was supported for the first author by a Postgraduate Research Scholarship awarded in 2009 by the Irish Research Council for Science, Engineering and Technology (IRCSET), Ireland. The authors are most grateful to the reviewers for constructive comments on an earlier version of the paper.

## References

- Brands, D.W.A., Bovendeerd, P.H.M., Peters, G.W.M., Wismans, J.S.H., 2000. The large shear strain dynamic behavior of In-vitro porcine brain tissue and the silicone gel model material, Proceedings of the 44th Stapp Car Crash Conference, pp. 249–260.
- Darvish, K.K., Crandall, J.R., 2001. Nonlinear viscoelastic effects in oscillatory shear deformation of brain tissue. *Med. Eng. Phy.* 23, 633–645.
- Garo, A., Hrapko, M., van Dommelen, J.A.W., Peters, G.W.M., 2007. Towards a reliable characterization of the mechanical behaviour of brain tissue: The effects of postmortem time and sample preparation. *Biorheology* 44, 51-58.
- Hrapko, M., van Dommelen, J.A.W., Peters, G.W.M., Wismans, J.S.H.M., 2008. The influence of test conditions on characterization of the mechanical properties of brain tissue. *J. Biomech. Eng.* 130, 0310031 - 03100310
- McElhaney, J.H., Melvin, J.W., Roberts, V.L., Portnoy, H.D., 1973. Dynamic characteristics of the tissues of the head. Kenedi, R. M., ed. *Perspectives in Biomedical Engineering. Proceedings of a Symposium.* Macmillan press Ltd., London, 215–222.
- Metz, H., McElhaney, J., Ommaya, A.K., 1970. A comparison of the elasticity of live, dead, and fixed brain tissue. *J. Biomech* 3, 453–458.
- Miller, K., Chinzei, K., 1997. Constitutive modelling of brain tissue: experiment and theory. *J. Biomech.* 30, 1115 -1121.
- Miller, K., Chinzei, K., 2002. Mechanical properties of brain tissue in tension. *J. Biomech.* 35, 483-490.
- Miller, K., Chinzei, K., Orsengo, G., Bednarz, P., 2000. Mechanical properties of brain tissue in-vivo: experiment and computer simulation. *J. Biomech.* 33, 1369–1376.
- Nicolle, S., Lounis, M., Willinger, R., 2004. Shear properties of brain tissue over a frequency range relevant for automotive impact situations: New experimental results. *Stapp Car Crash J.* 48, 239 – 258.
- Ogden, R.W., 1997. *Non-linear elastic deformations.* Dover, New York.
- Pervin, F., Chen, W.W., 2009. Dynamic mechanical response of bovine grey matter and white matter brain tissues under compression. *J. Biomech.* 42, 731–735.
- Pervin, F., Chen, W.W., 2011. Effect of inter-species, gender, and breeding on the mechanical behavior of brain tissue. *NeuroImage* 54, S98–S102.
- Peters, G.W.M., Meulman, J.H., Sauren, A.H.J., 1997. The applicability of the time/temperature superposition principle to brain tissue. *Biorheology* 34, 127–138.

Rashid, B., 2012. Mechanical characterization of brain tissue in compression, tension and shear under dynamic conditions. PhD thesis, University College Dublin, Ireland.

Rashid, B., Destrade, M., Gilchrist, M.D., 2012a. Inhomogeneous deformation of brain tissue during tension tests. *Comput. Mat. Sci* 64, 295-300.

Rashid, B., Destrade, M., Gilchrist, M.D., 2012b. Mechanical characterization of brain tissue in compression at dynamic strain rates. *J. Mech. Behavior. Biomed. Mat.* 10, 23-38.

Rashid, B., Destrade, M., Gilchrist, M.D., 2012c. Mechanical characterization of brain tissue in tension at dynamic strain rates. *J. Mech. Behavior. Biomed. Mat* <http://dx.doi.org/10.1016/j.jmbbm.2012.07.015>, (in press).

Shen, F., Tay, T.E., Li, J.Z., Nigen, S., Lee, P.V.S., Chan, H.K., 2006. Modified Bilston nonlinear viscoelastic model for finite element head injury studies. *J. Biomech. Eng.* 128, 797 – 801.

Tamura, A., Hayashi, S., Nagayama, K., Matsumoto, T., 2008. Mechanical characterization of brain tissue in high-rate extension. *J. Biomech. Sci. Eng.* 3, 263 – 274.

Tamura, A., Hayashi, S., Watanabe, I., Nagayama, K., Matsumoto, T., 2007. Mechanical characterization of brain tissue in high-rate compression. *J. Biomech. Sci. Eng.* 2, 115 - 126.

Zhang, J., Yoganandan, N., Pintar, F.A., Guan, Y., Shender, B., Paskoff, G., Laud, P., 2011. Effects of tissue preservation temperature on high strain-rate material properties of brain. *J. Biomech.* 44, 391 – 396.

### Figure Captions

Fig. 1 – (a) Major components of high rate shear device (HRSD), (b) Schematic diagram of complete test setup, with  $K = 1$  for maximum amount of shear.

Fig. 2 – Square brain specimen ( $19.0 \pm 0.1 \times 19.0 \pm 0.1$  mm) and  $4.0 \pm 0.1$  mm thick excised from medial to lateral direction.

Fig. 3 – Variation in Cauchy shear stress magnitudes of brain tissue at variable preservation temperature conditions (ice cold,  $22^\circ\text{C}$  and  $37^\circ\text{C}$ ), tested at a strain rate of 30/s.

Fig. 4 – (a) Excellent agreement between the experimental and numerical shear stress values at different temperatures (b) shows results of one-way ANOVA analysis based on average experimental shear stress values (c) homogeneous deformation observed in numerical simulations (under ice cold condition) (d) homogeneous deformation of brain tissue during simple shear experiments.

Fig. 5 – Consistency in shear stress profiles using Ogden material parameters obtained at a strain rate of 30/s.

Figure 1  
[Click here to download high resolution image](#)

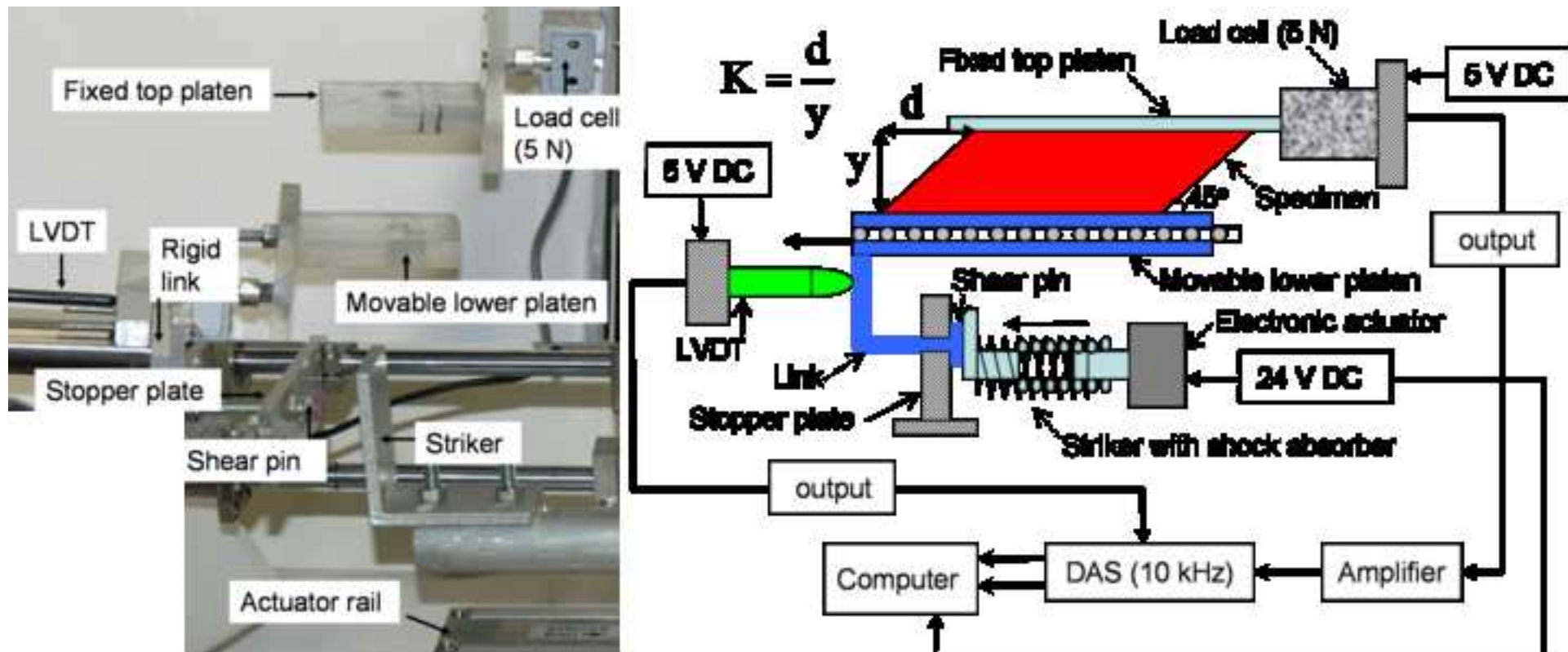


Figure 2  
[Click here to download high resolution image](#)

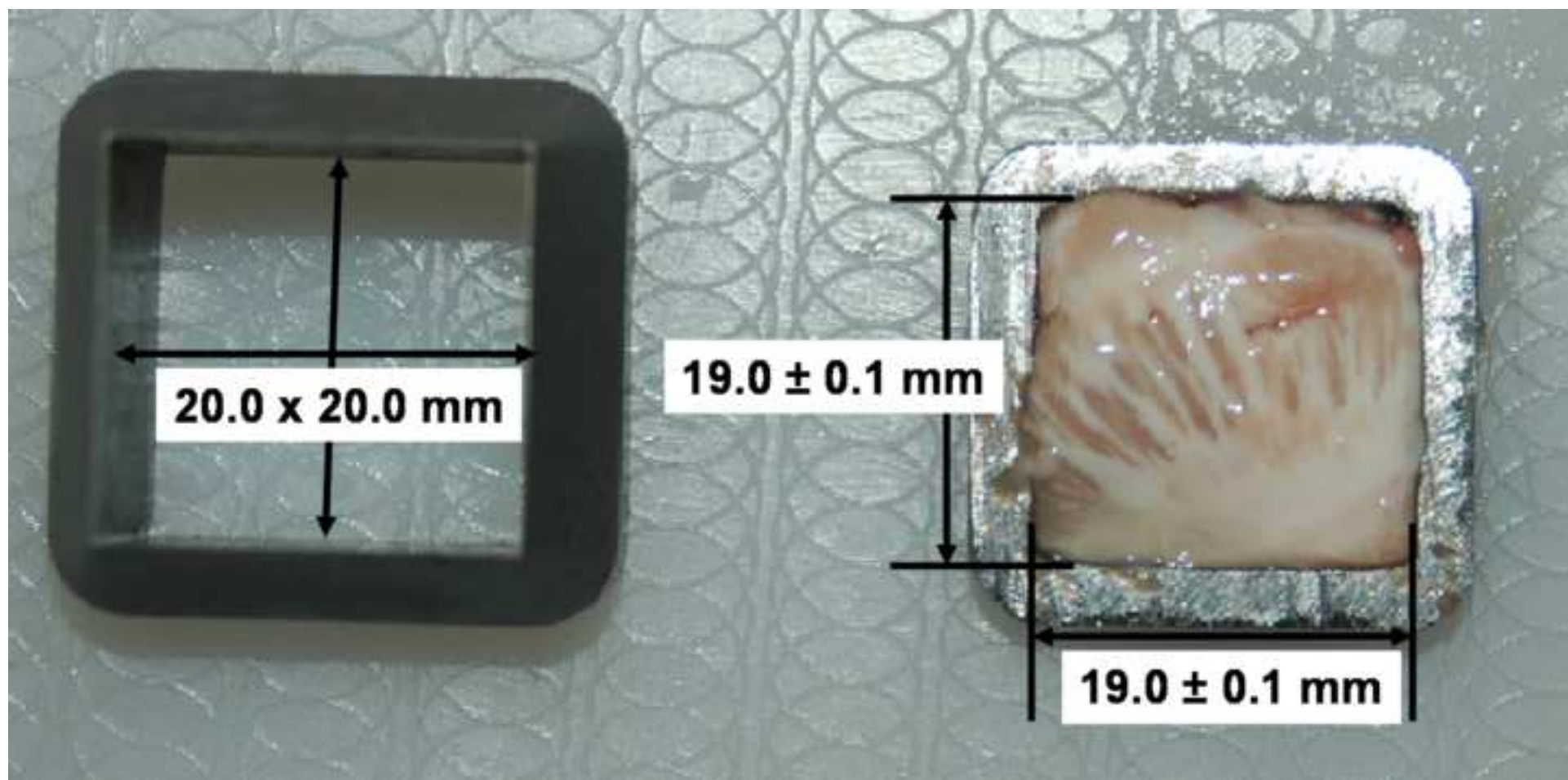


Figure 3  
[Click here to download high resolution image](#)

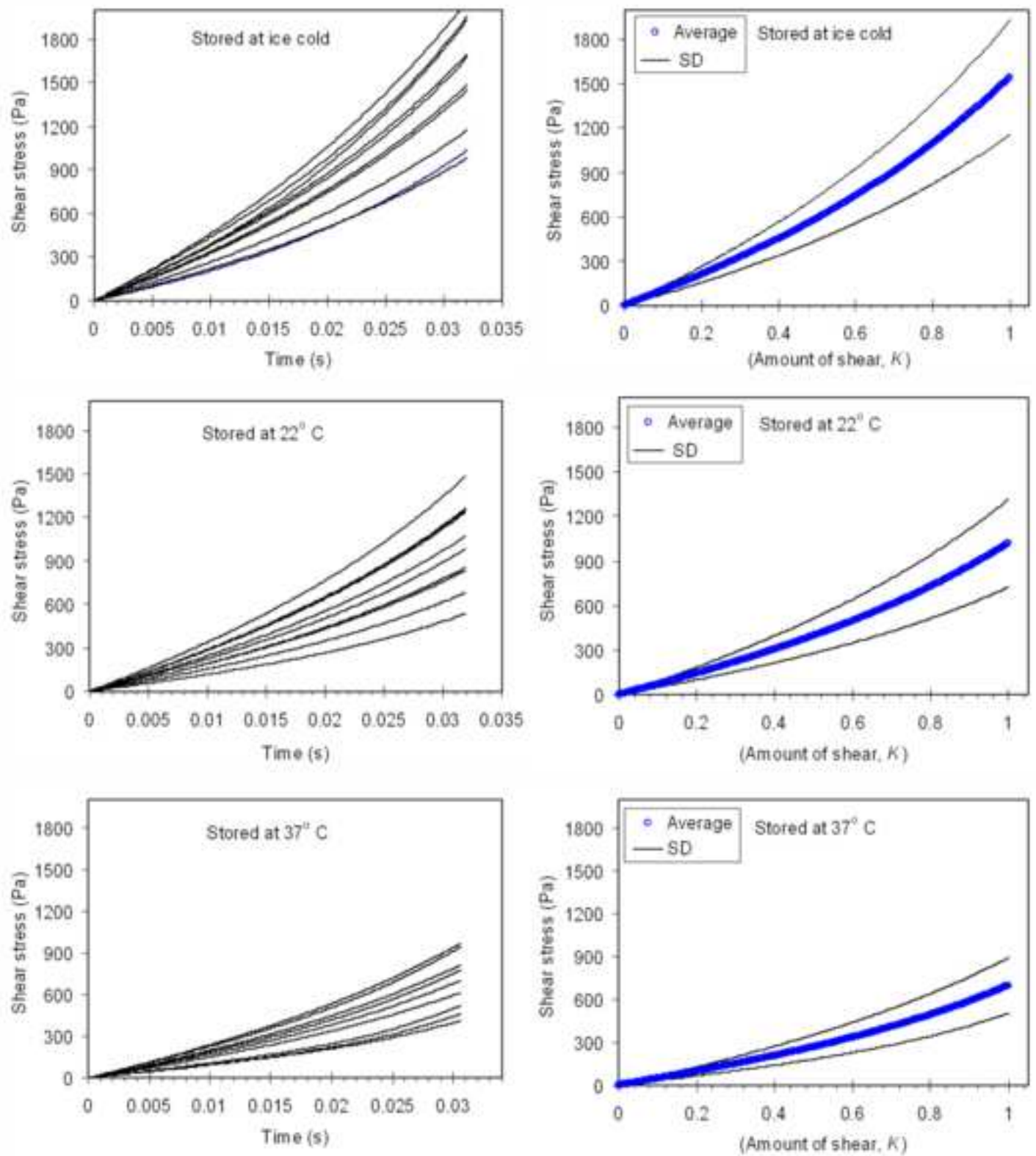
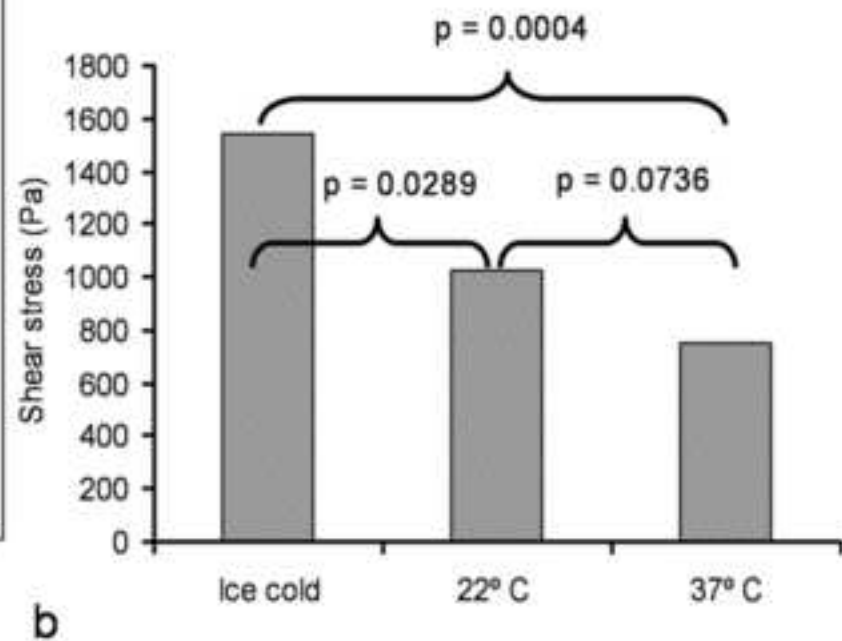
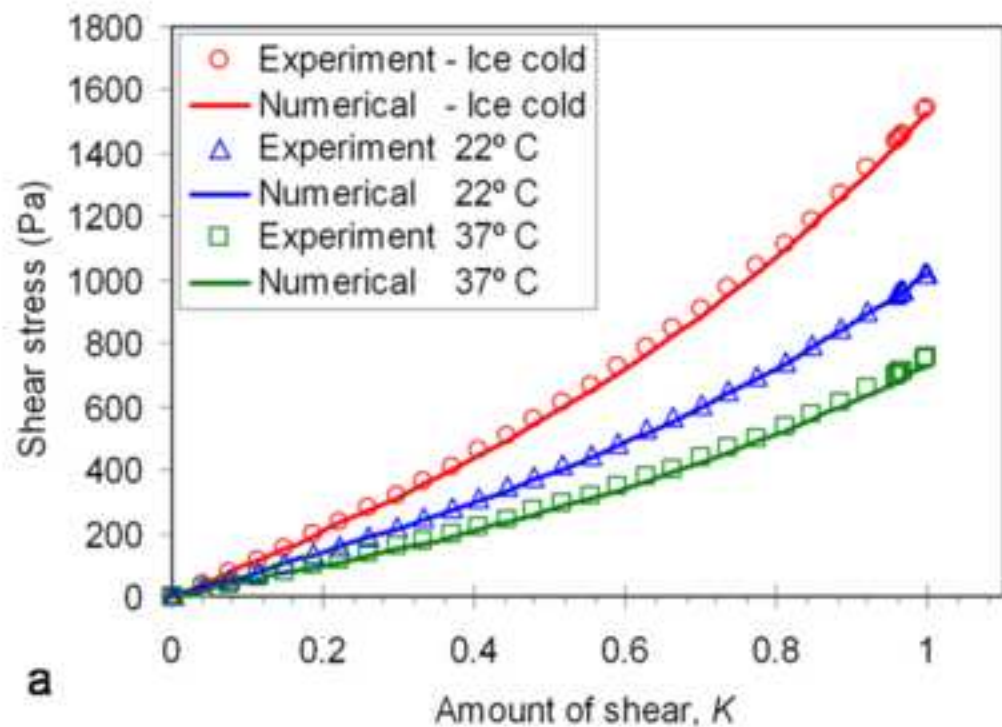
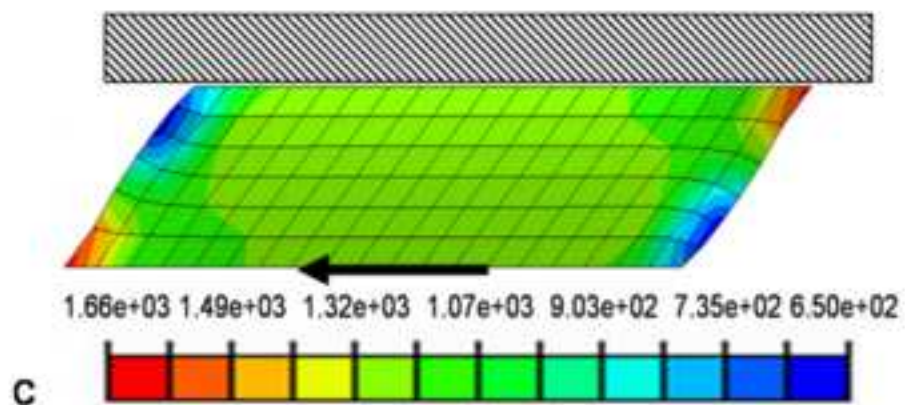




Figure 4  
[Click here to download high resolution image](#)



Cauchy shear stress,  $S_{12}$  at  $K=1$



Specimen glued at top and bottom surfaces

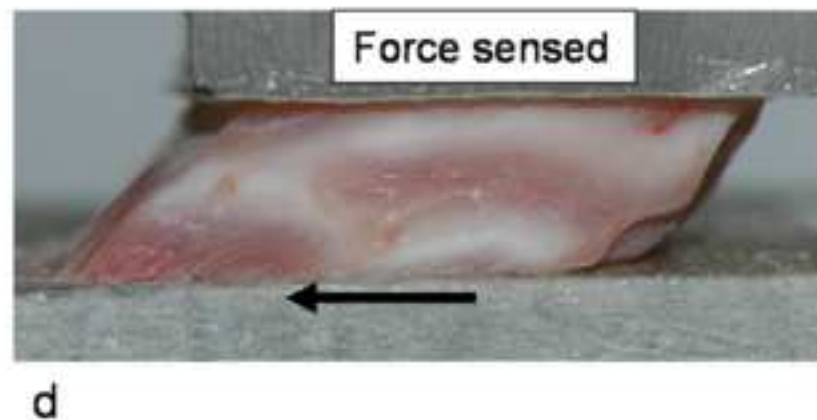


Figure 5  
[Click here to download high resolution image](#)

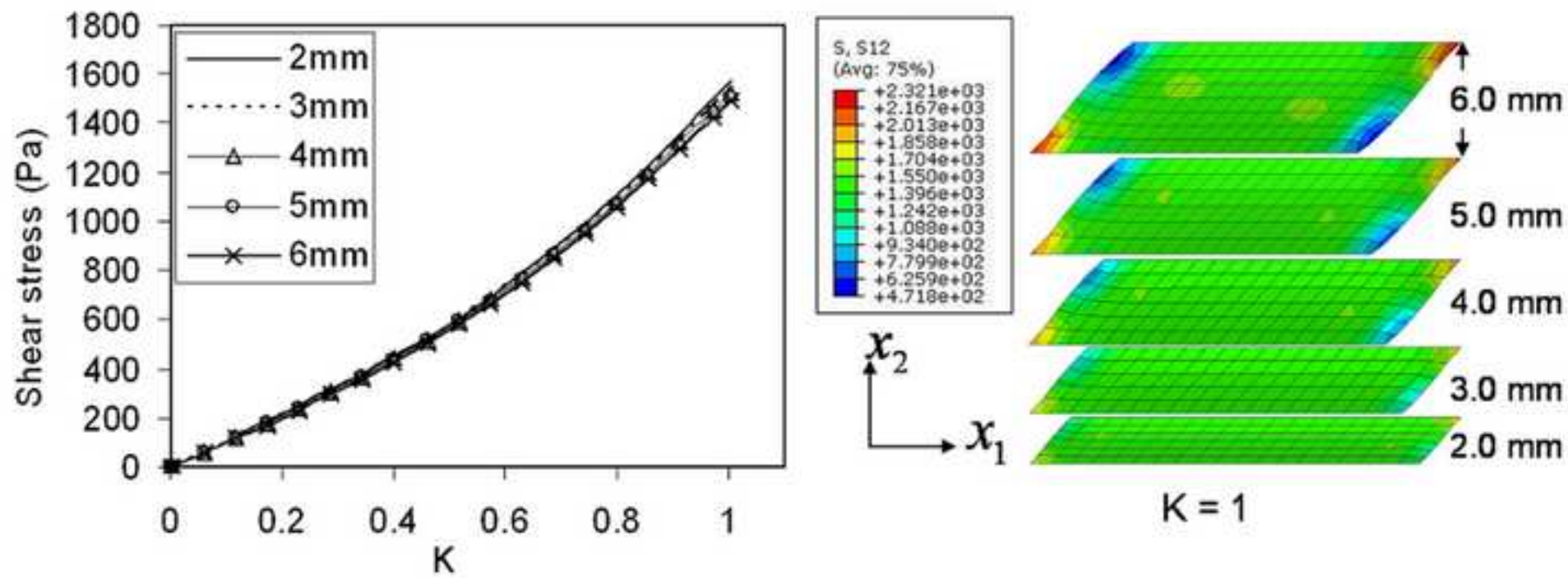


Table 1: One-term Ogden material parameters  $\mu$  (initial shear modulus) and  $\alpha$  (stiffening parameter) found for porcine brain tissue using simple shear tests at 30/s and different temperatures.

Fitting parameters ( $\mu$ , $\alpha$ )			
Temperatures	Average $\mu$ (Pa)	$\alpha$	$R^2$
Ice cold	1050	4.1	0.9992
22° C	715.3	4.0	0.9998
37° C	500.7	4.0	0.9999

**CONFLICT OF INTEREST STATEMENT**

None of the authors have any conflict of interest in this work.